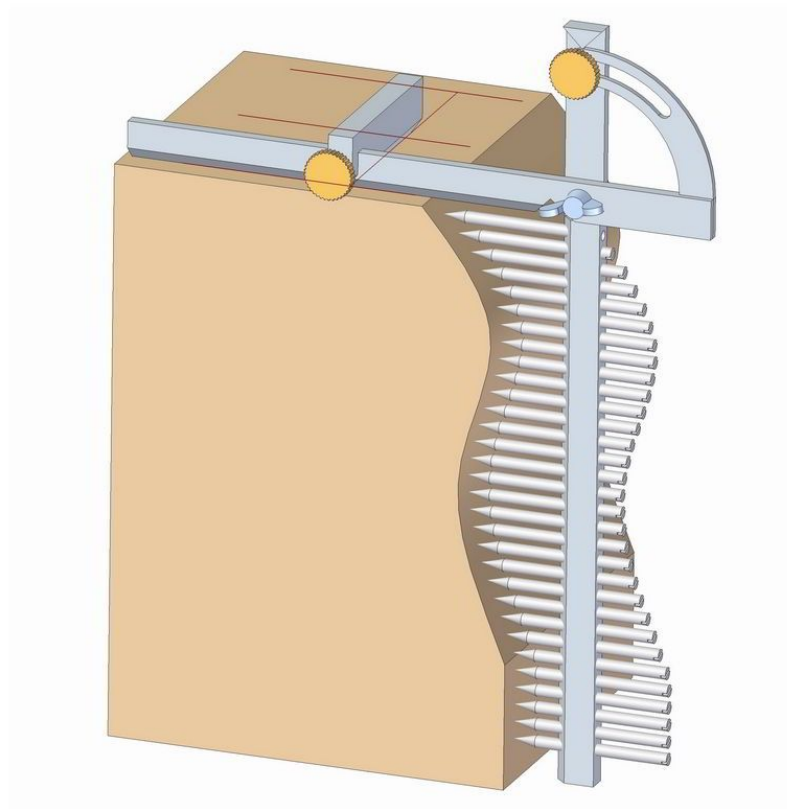
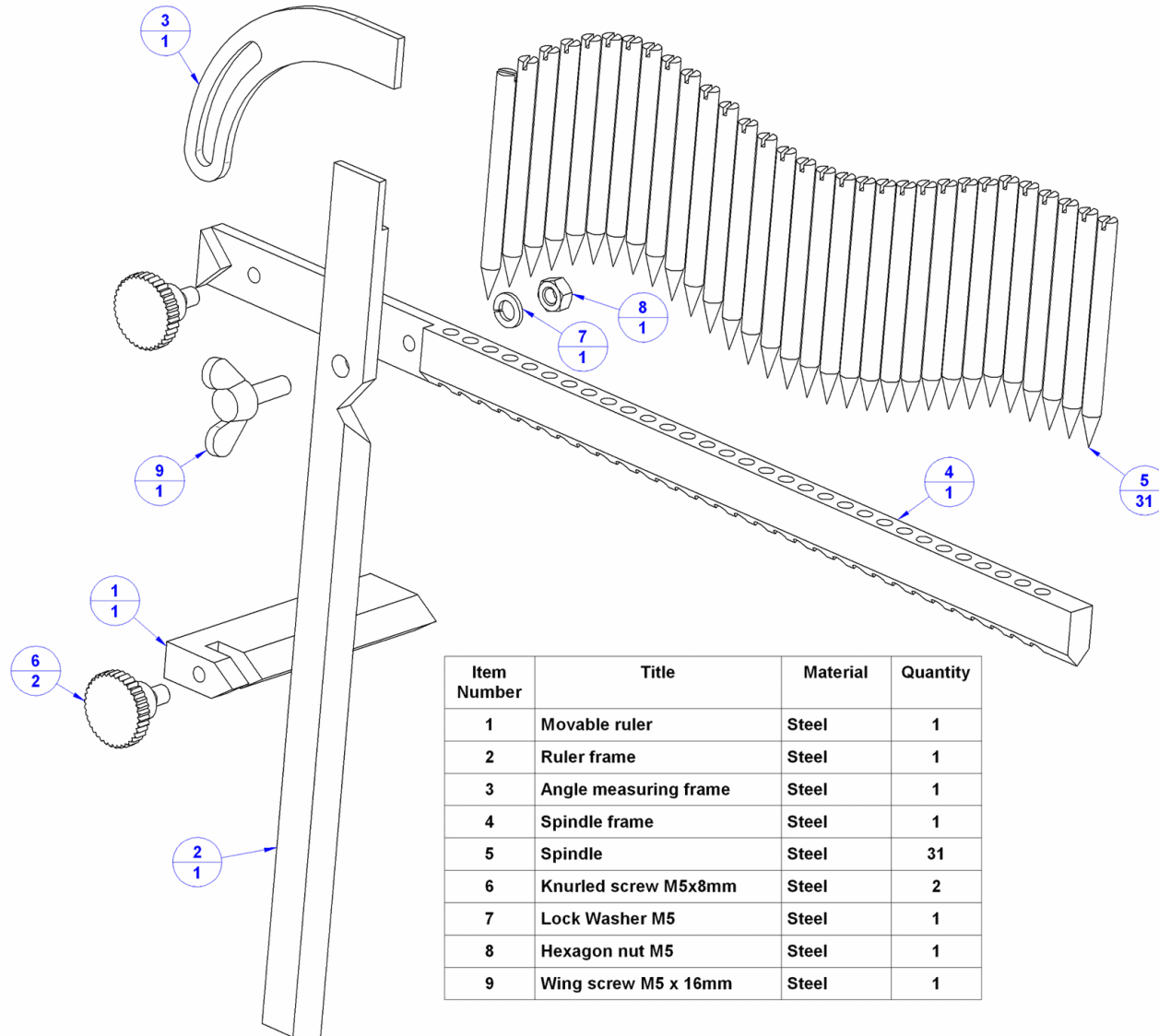


Contour gauge plan



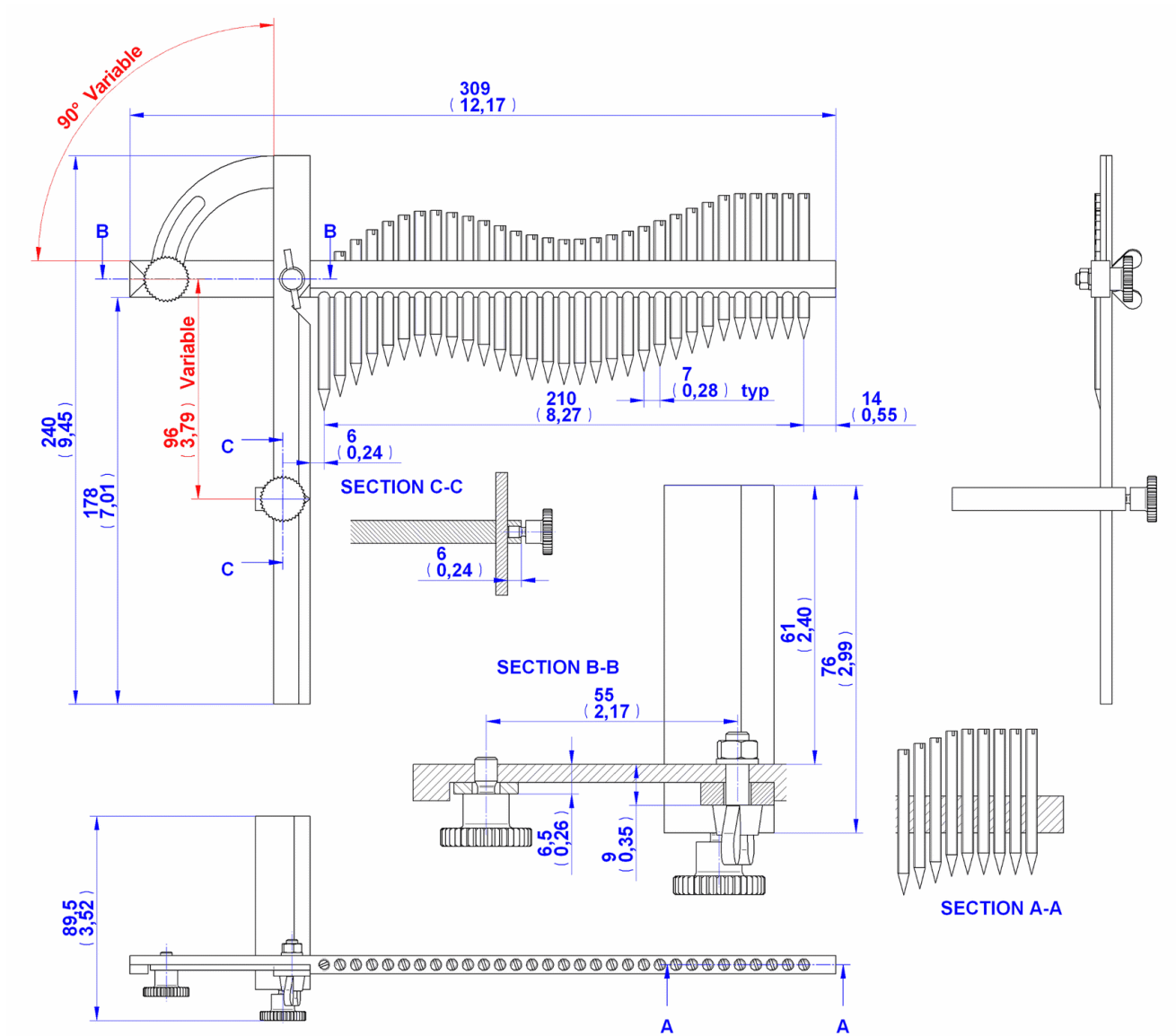
The universal mechanical contour gauge (shape copying and controlling measuring tool) that we present in this project is especially useful for modeling ships and airplanes, but not just that. Because of its simplicity, you can use it for copying and controlling various curved surfaces on working items. This tool is also convenient for checking out curves - for example, while making a turning template, etc. Also, you can easily adjust construction to your needs by changing some dimensions, or in another words you can decrease or enlarge the whole assembly to suit the regular dimensions and tools for your line of work.

Parts list

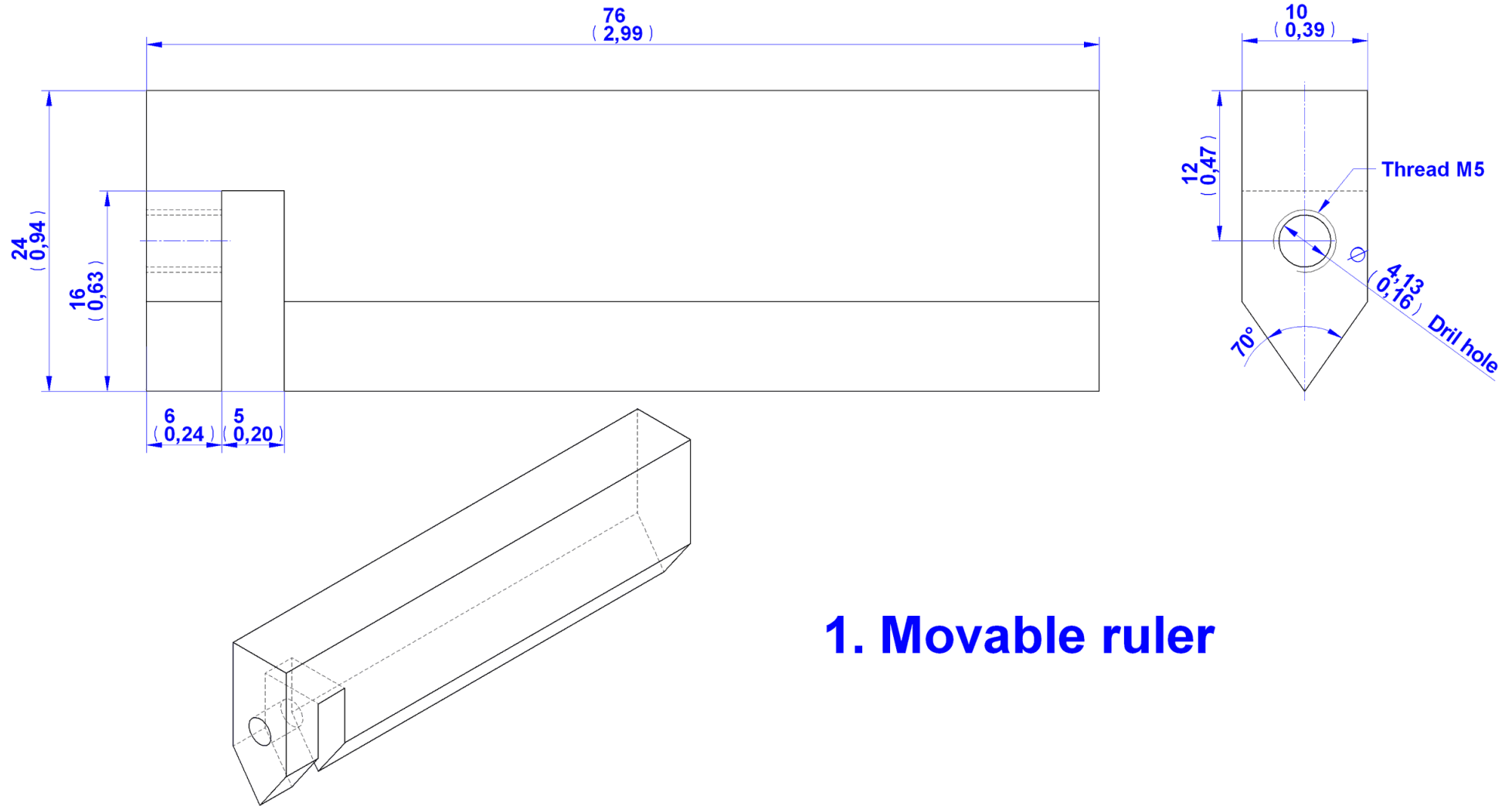


Item Number	Title	Material	Quantity
1	Movable ruler	Steel	1
2	Ruler frame	Steel	1
3	Angle measuring frame	Steel	1
4	Spindle frame	Steel	1
5	Spindle	Steel	31
6	Knurled screw M5x8mm	Steel	2
7	Lock Washer M5	Steel	1
8	Hexagon nut M5	Steel	1
9	Wing screw M5 x 16mm	Steel	1

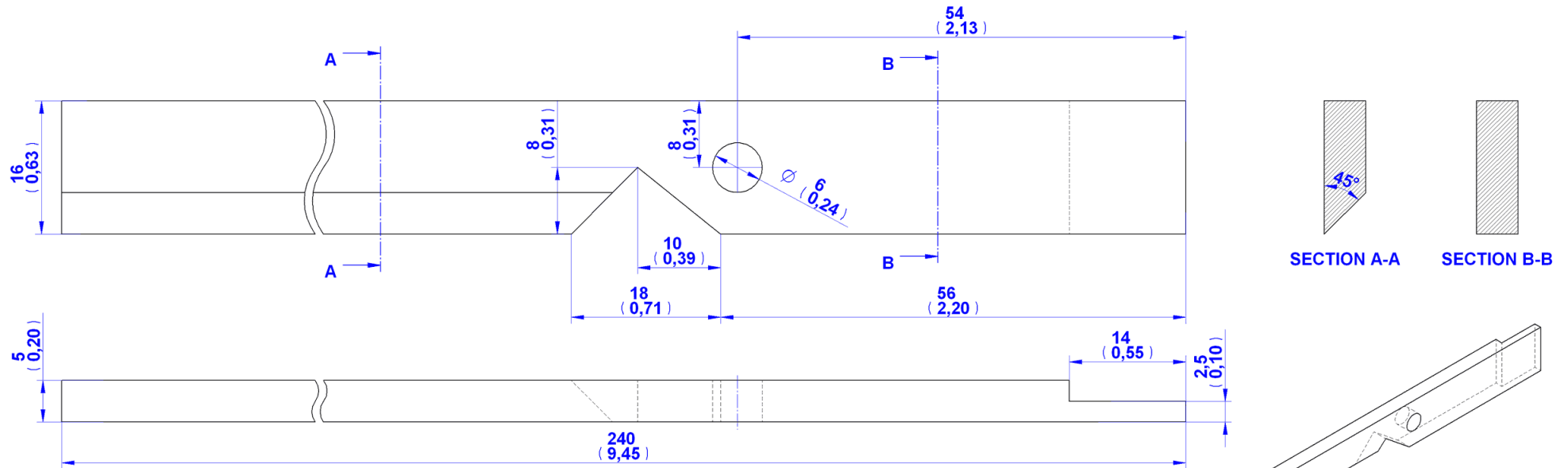
Assembly drawing



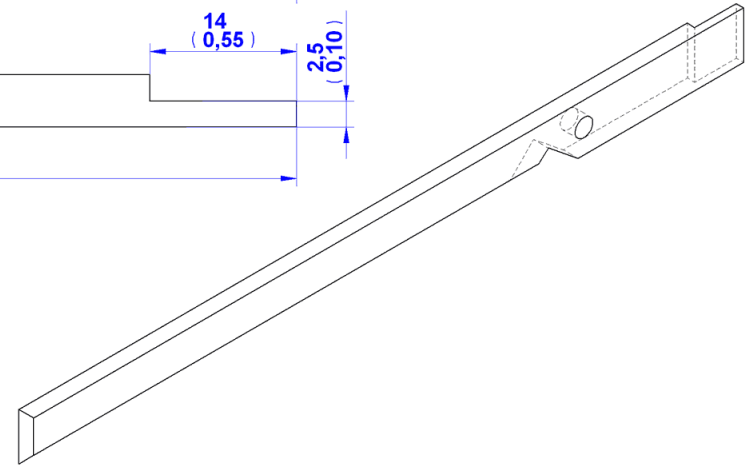
Parts drawings



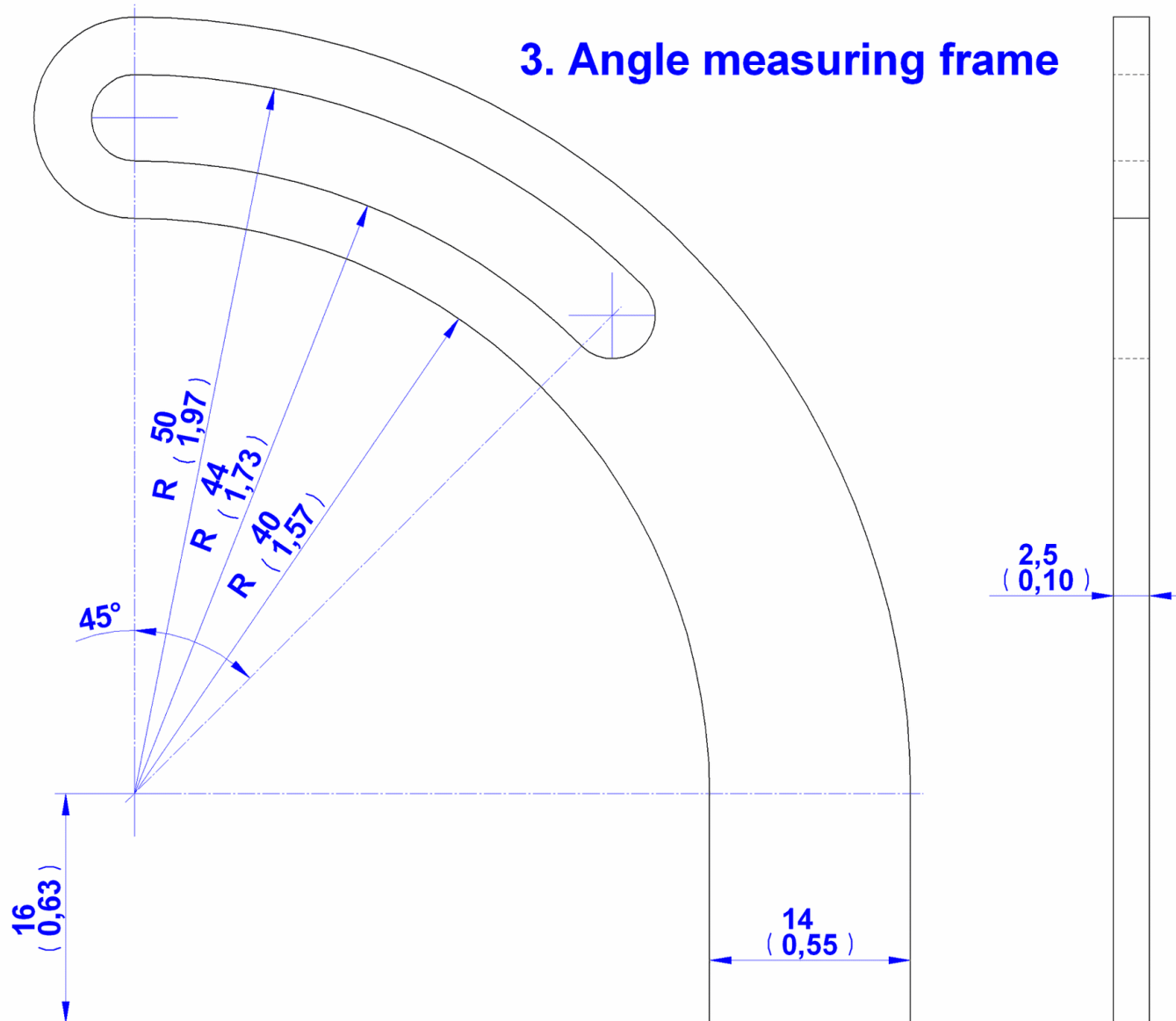
1. Movable ruler

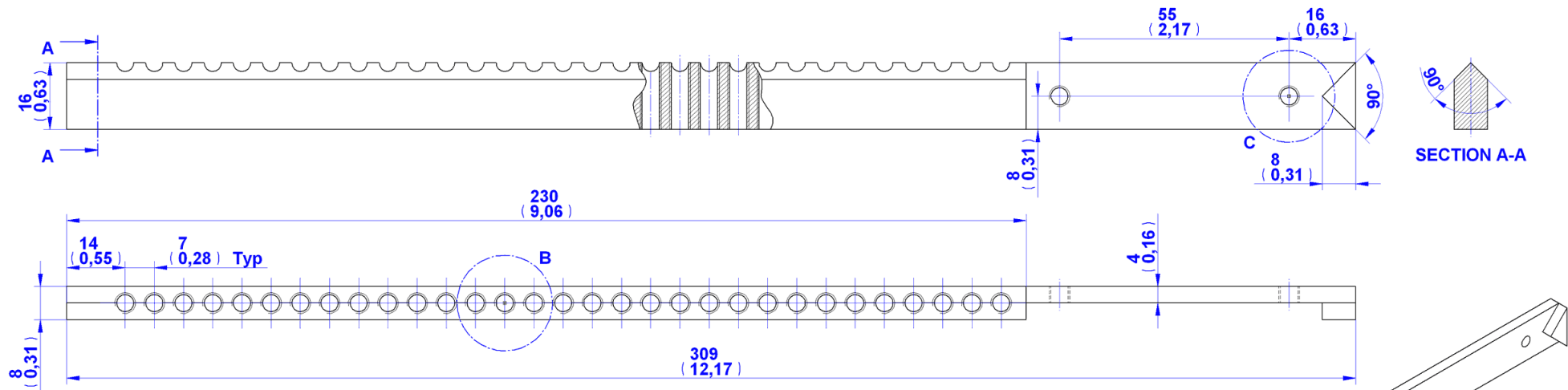


2. Ruler frame

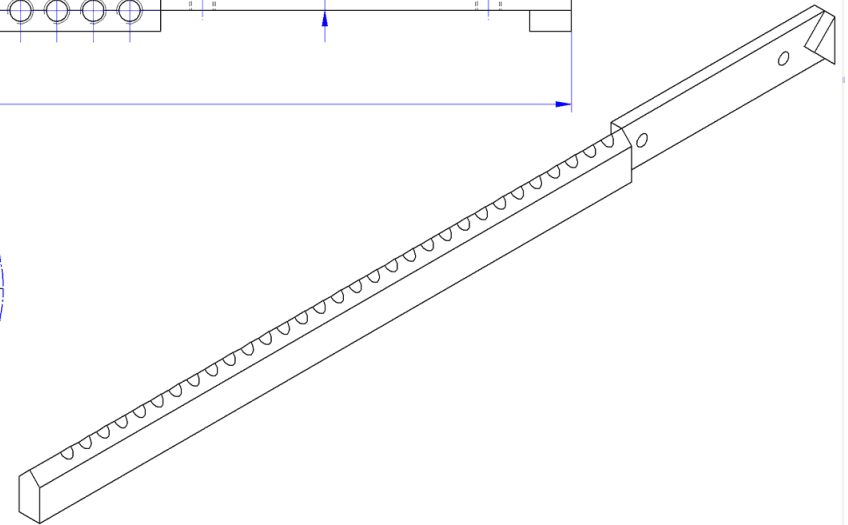
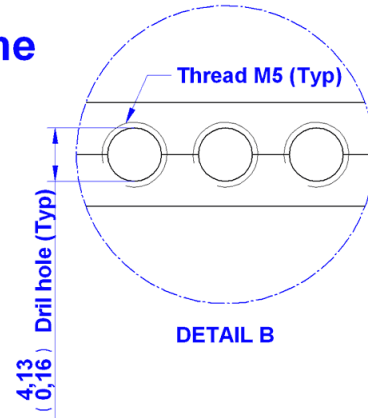
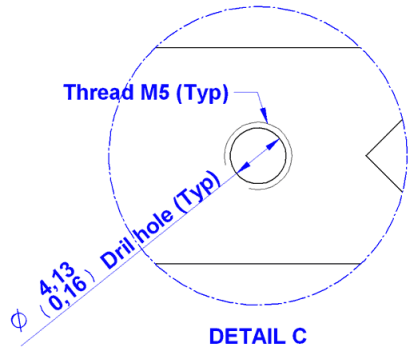


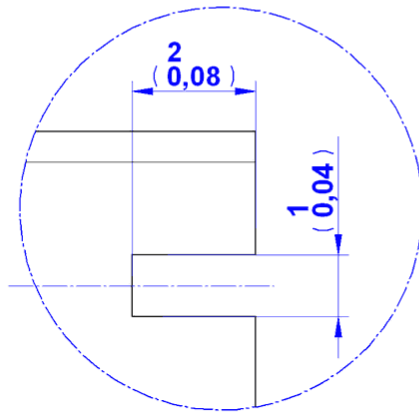
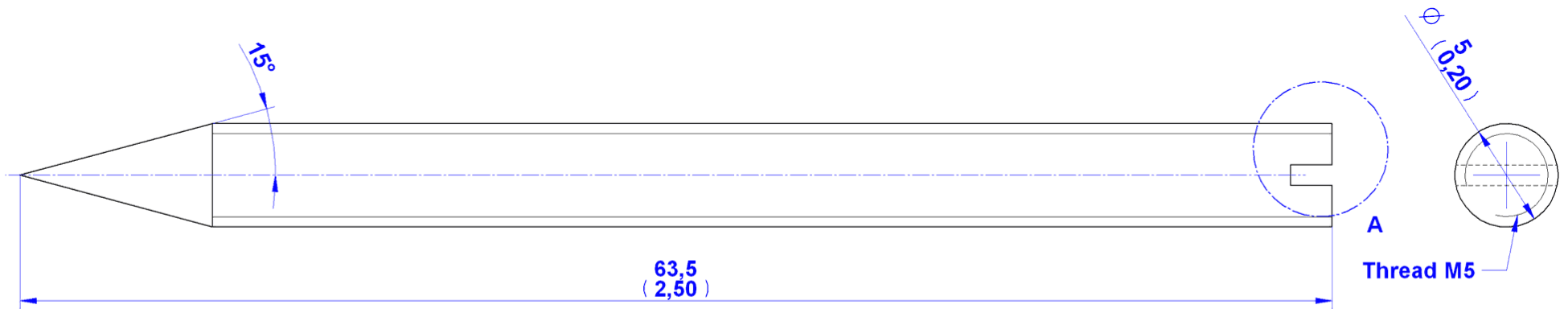
3. Angle measuring frame



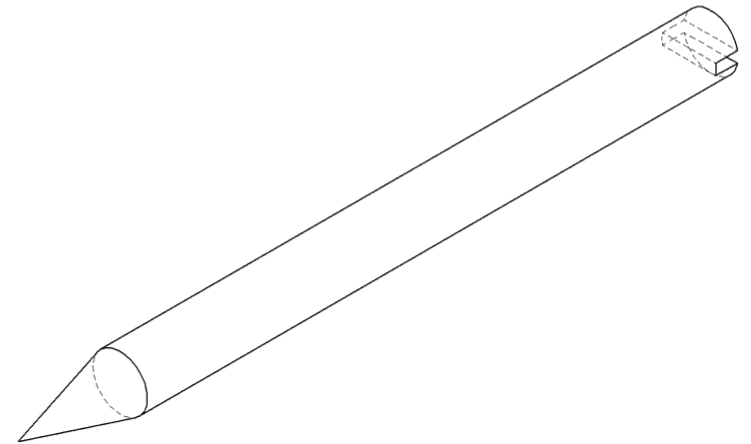


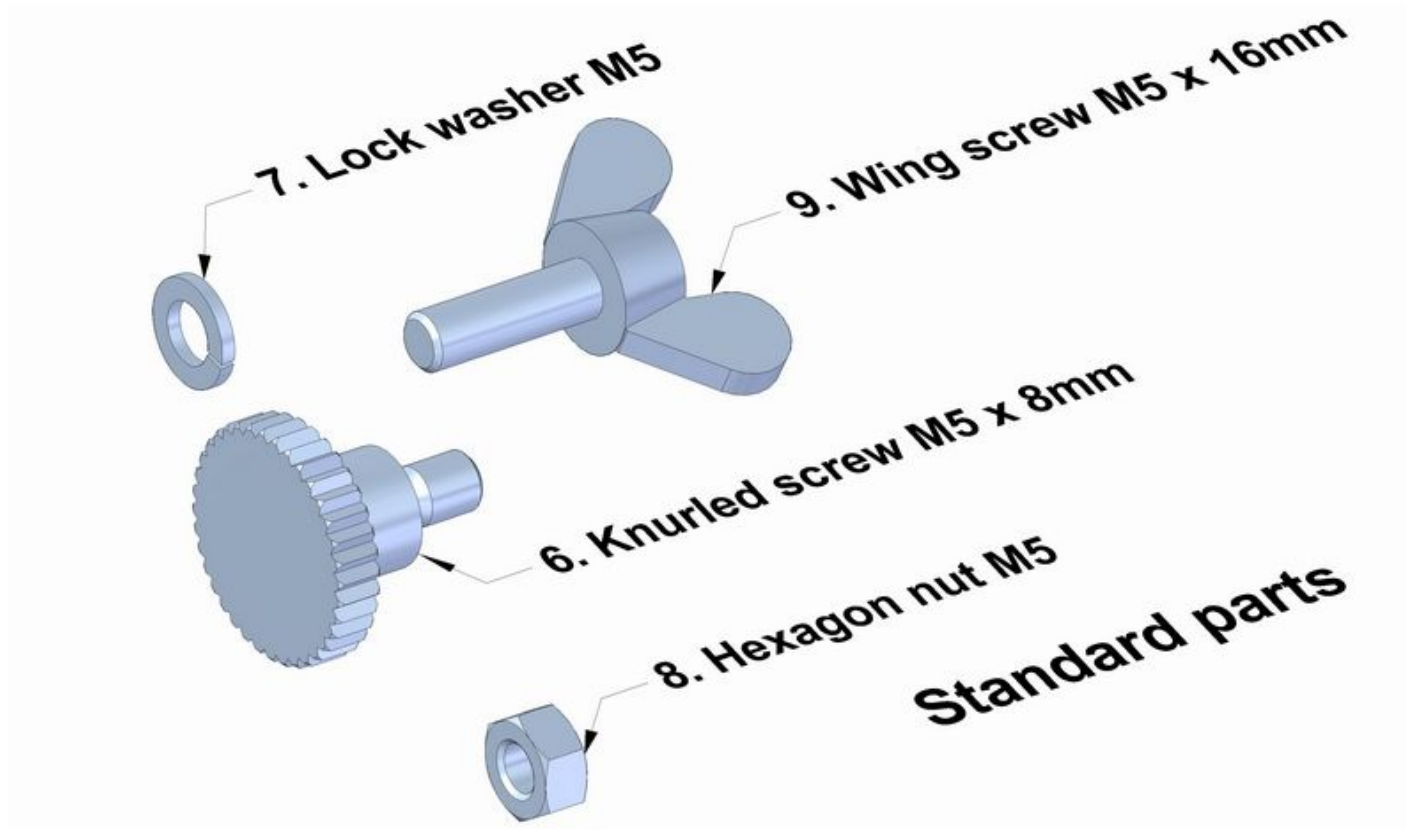
4. Spindle frame





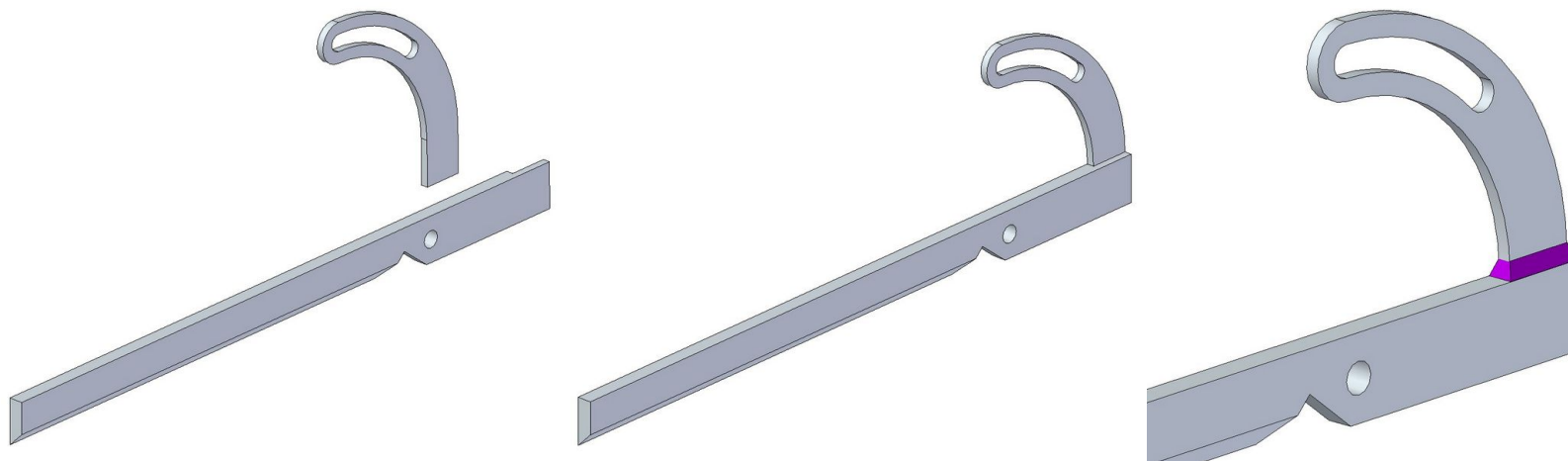
5. Spindle



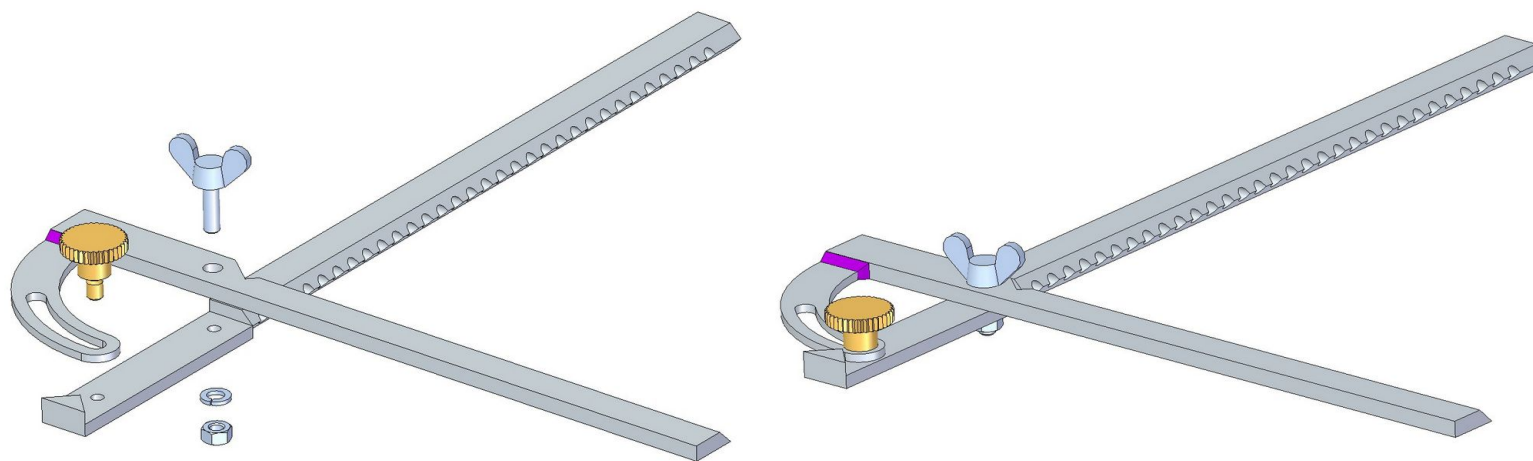


Assemblage images

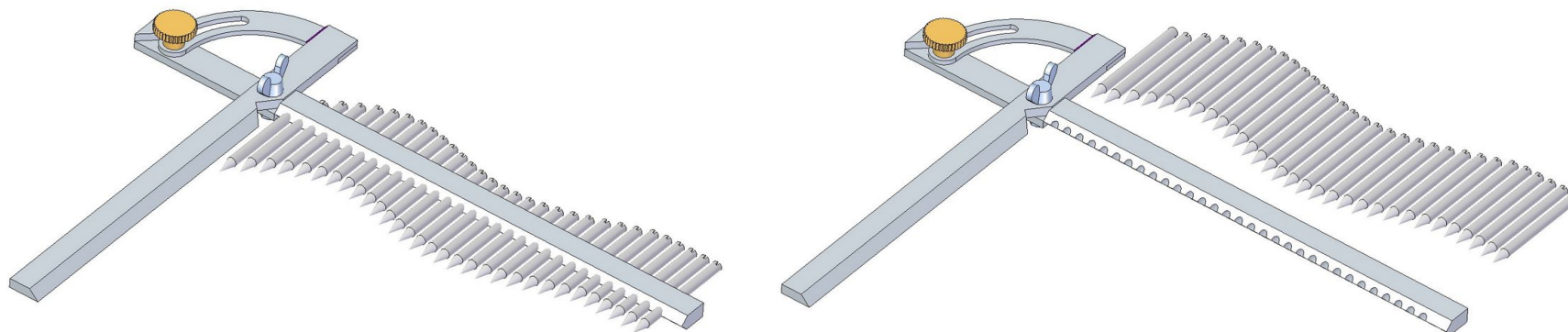
1



2.



3.



4.

