

Hexagon Stool

Here is a plan for making a really nice and practical stool. We named it 'Hexagon Stool Plan' because its seat is of hexagonal shape. It is ideal for use inside the home because it is lightweight and easy to manipulate, so it can be moved around wherever it is needed. It is characterized by a vintage appearance and it will perfectly align with the classic interior, but unfortunately won't match modern furniture made from chipboard and MDF.



If you have a look at the drawings, you will see that it is rather difficult to make. Its building certainly takes a little effort and knowledge, but in the end you will get a beautiful and functional piece of furniture in the house.

As you can see in the picture, the stool consists of a central vertical part (column) to which four legs and the seat are attached. The seat is quite complex and consists of parts (Seat tringle (part 1) and Seat edge (Part 2)) that are glued together. When forming the seat assembly, fasten it to the vertical column with the parts seat board (Part 3), seat axle (Part 4) and screws. Look at the pictures with the parts list and exploded view for clarification. We have drawn 2D drawings for each part and for the entire assembly, so that all the necessary dimensions for making this stool can be found in them.

In order to create the part column, you will need a lathe, but don't give up even if you don't have one because you can redesign the above part and decorate it in various other ways. In other words, it is not necessary to craft the column on a lathe at all, since its appearance can be adjusted with the tools and machines that you do have. We have tried to decorate the stool to the max, so as to draw your attention and show some of the possibilities for its decorating:

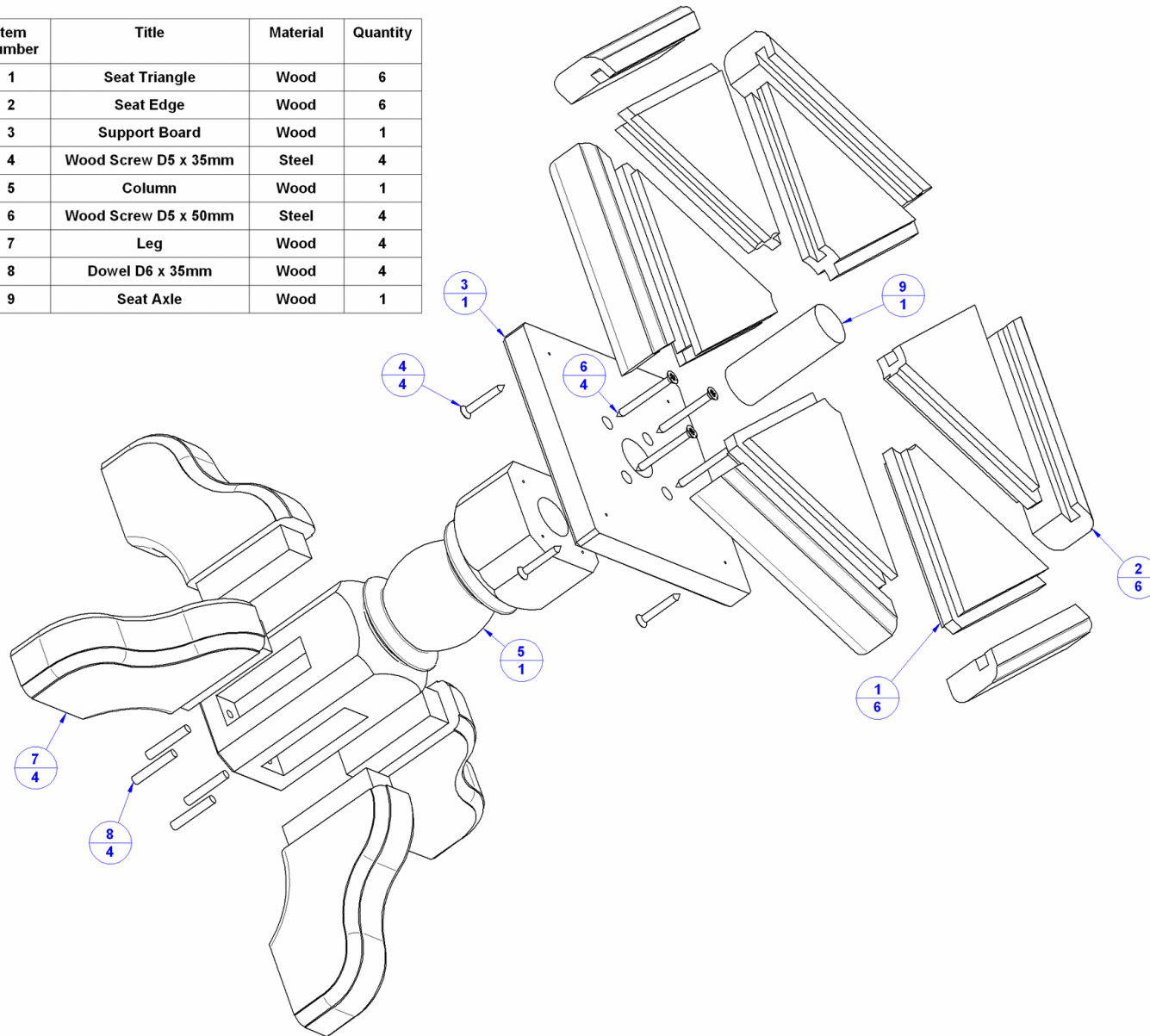
- The seat triangle parts are made of wood of different colors;
 - The seat is decorated with marquetry technique;
 - The column part is decorated on a lathe;
 - The legs design is beautified with a jigsaw;
- etc.

The whole plan has been created on the basis of a stool seen at our friend's place; first we were attracted by its beauty, but when we were told that it had been there for 10 years as an extremely practical and durable furniture piece, we decided to share this stool with you.

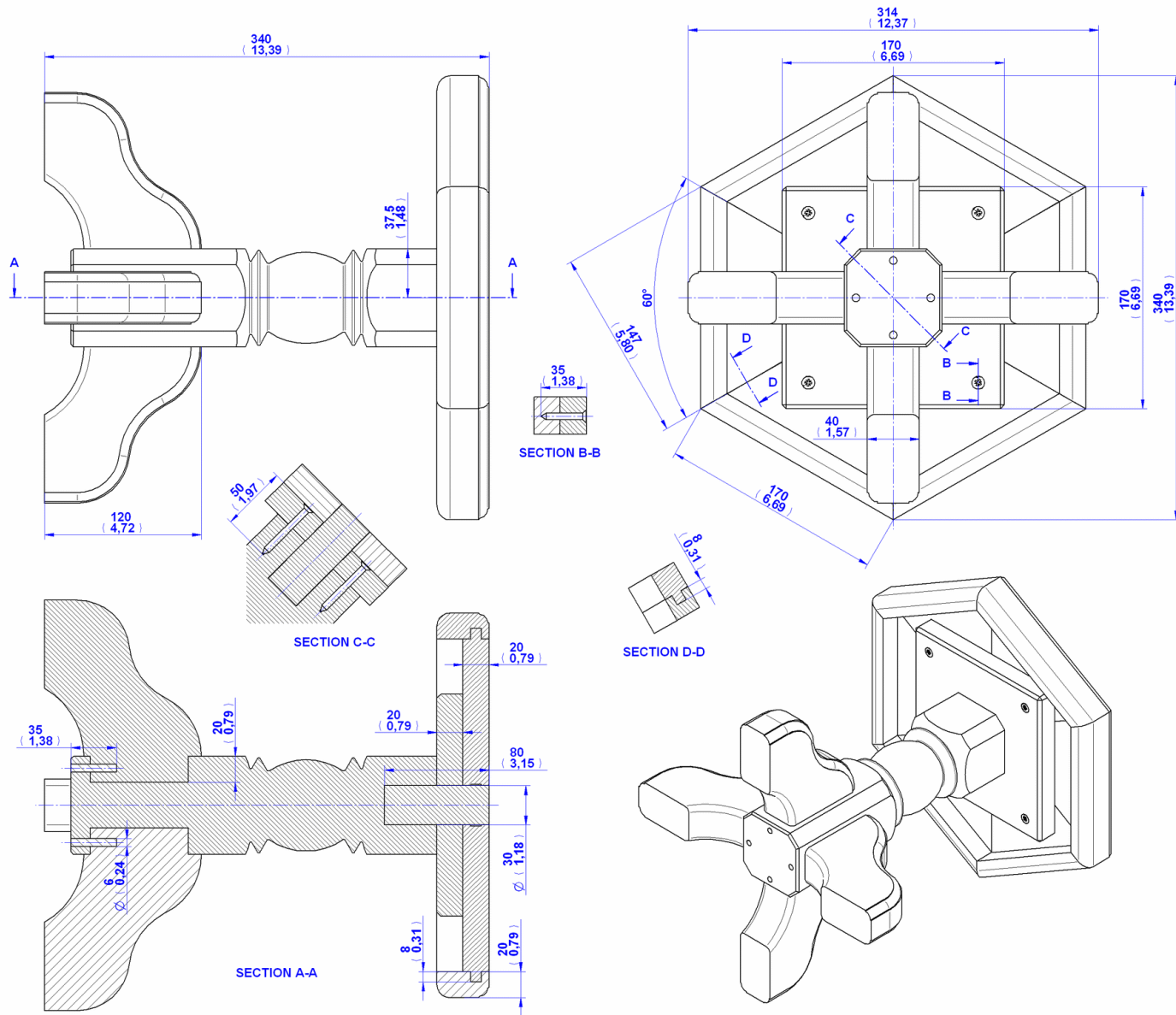
We hope you like it, and we will be very glad if the quality of this woodworking plan has left you no doubt and convinced you to give it a try!

Parts List

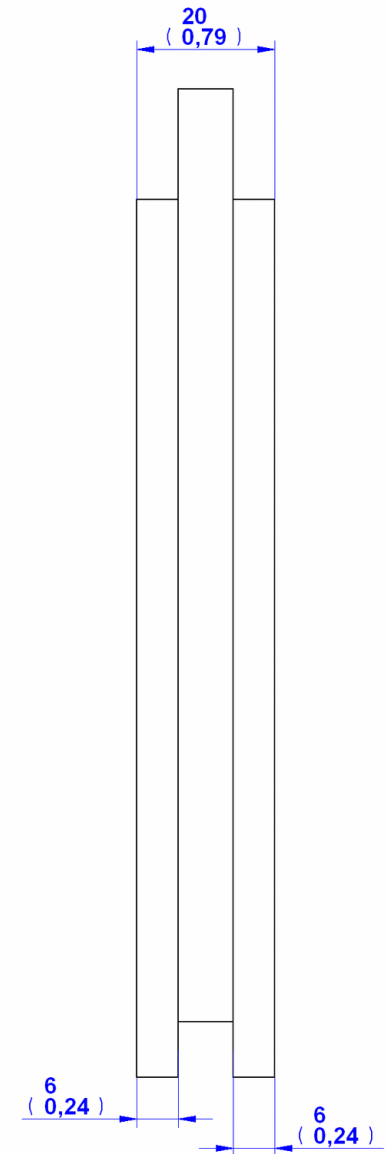
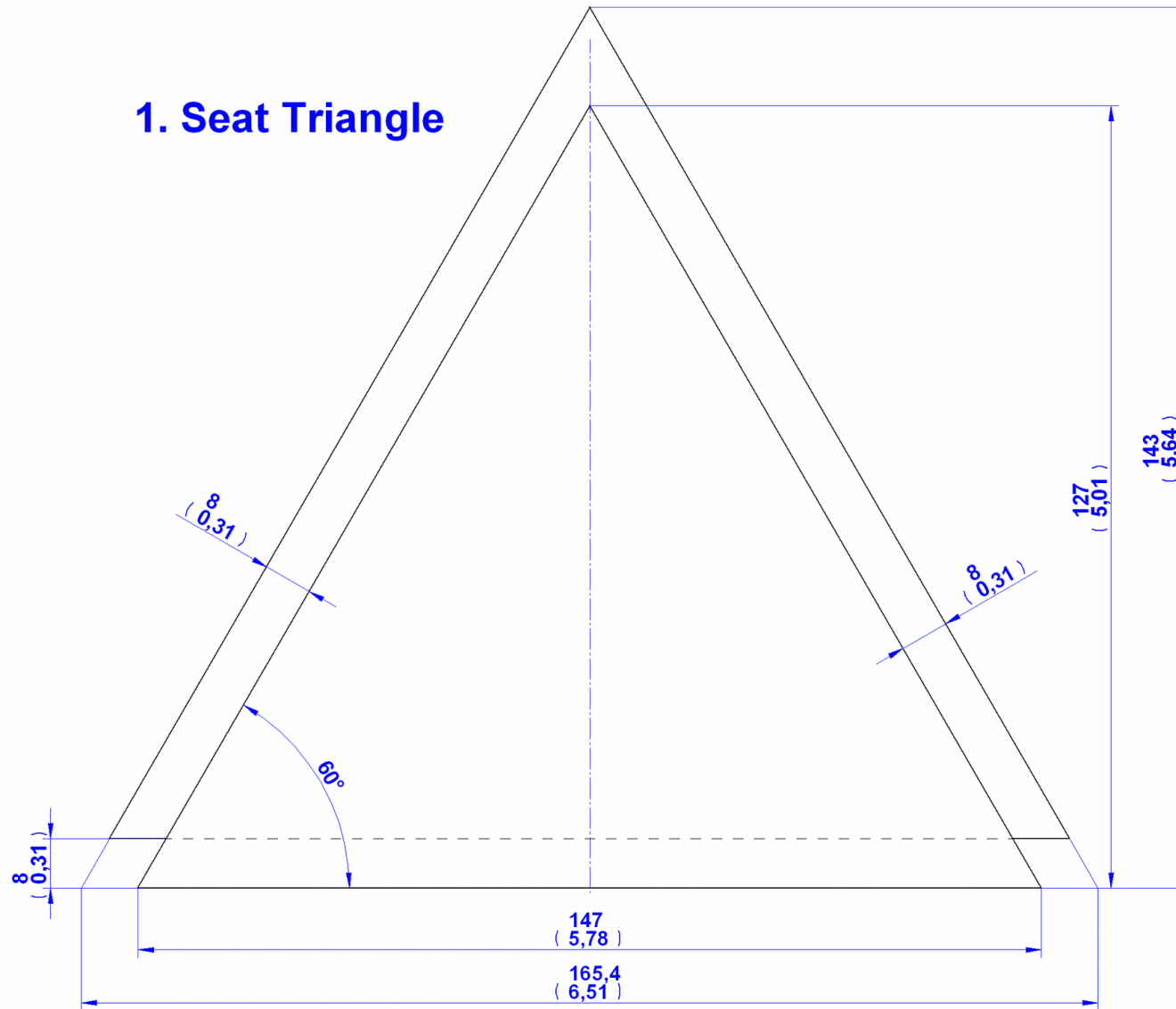
Item Number	Title	Material	Quantity
1	Seat Triangle	Wood	6
2	Seat Edge	Wood	6
3	Support Board	Wood	1
4	Wood Screw D5 x 35mm	Steel	4
5	Column	Wood	1
6	Wood Screw D5 x 50mm	Steel	4
7	Leg	Wood	4
8	Dowel D6 x 35mm	Wood	4
9	Seat Axle	Wood	1

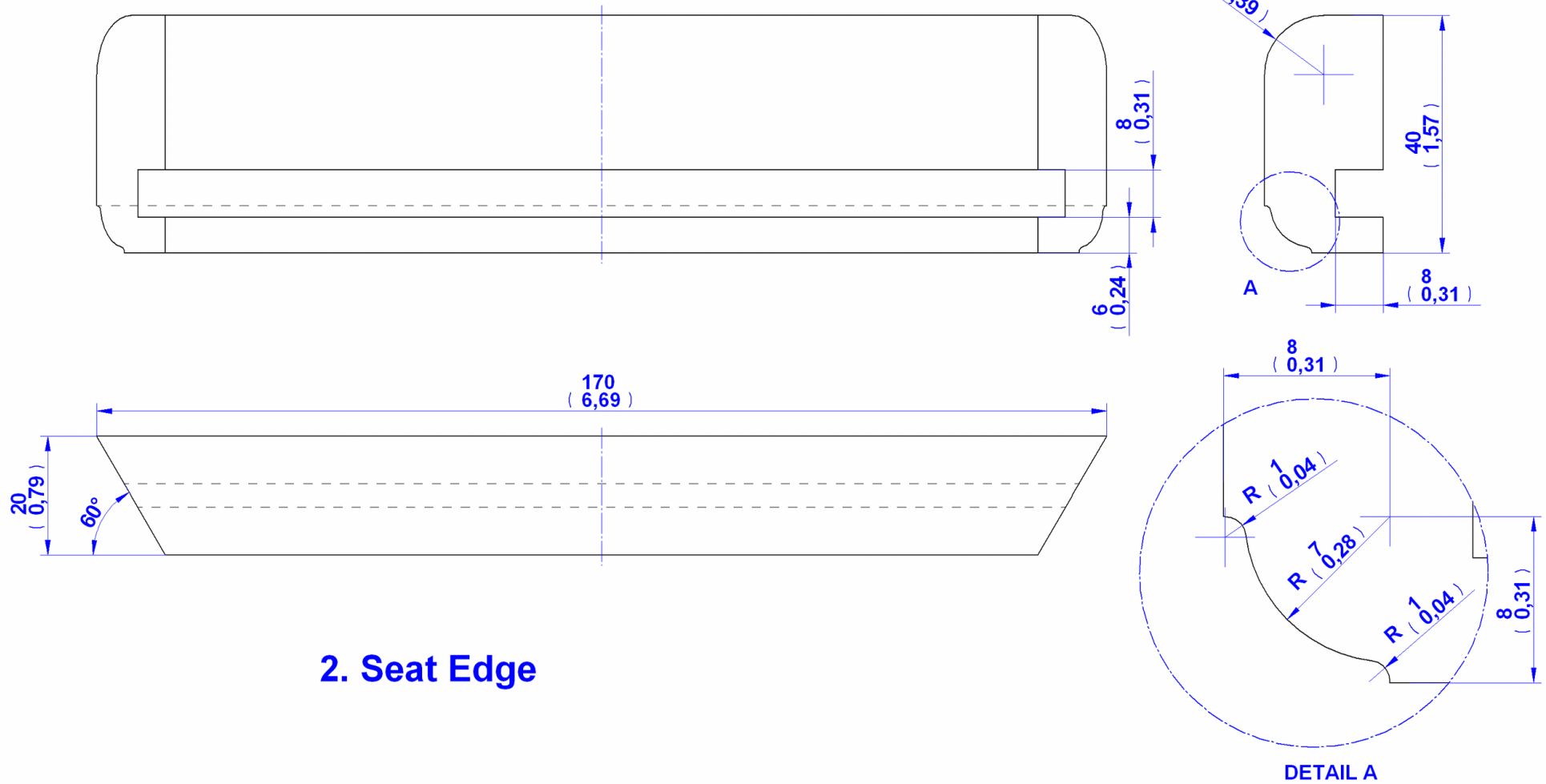


Assembly Drawing

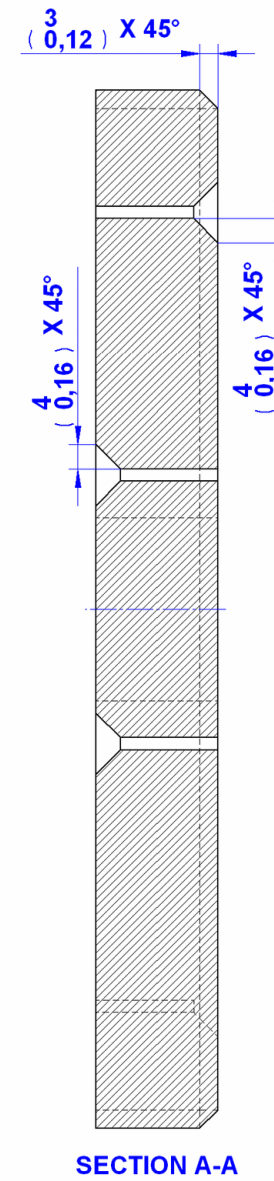
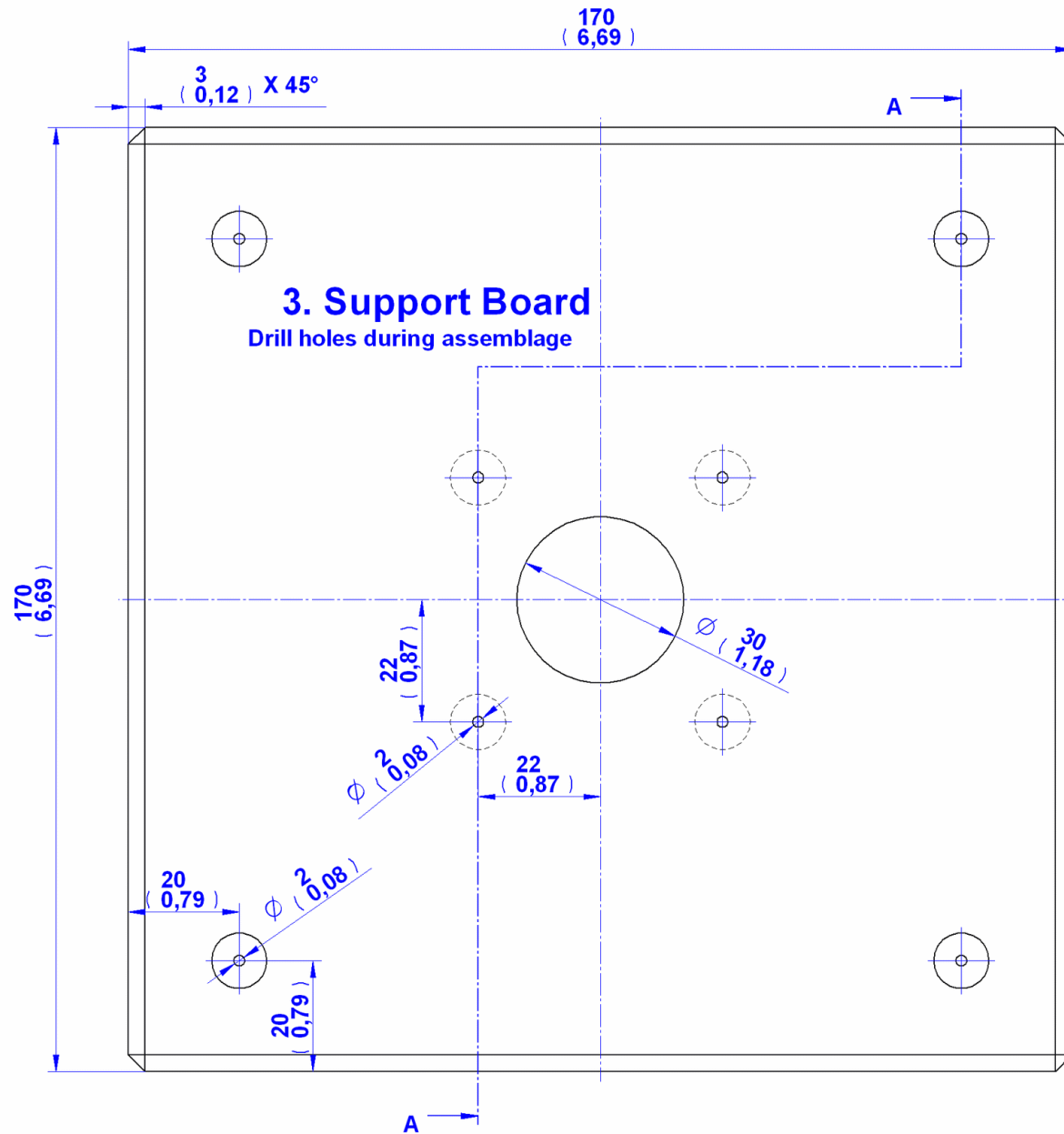


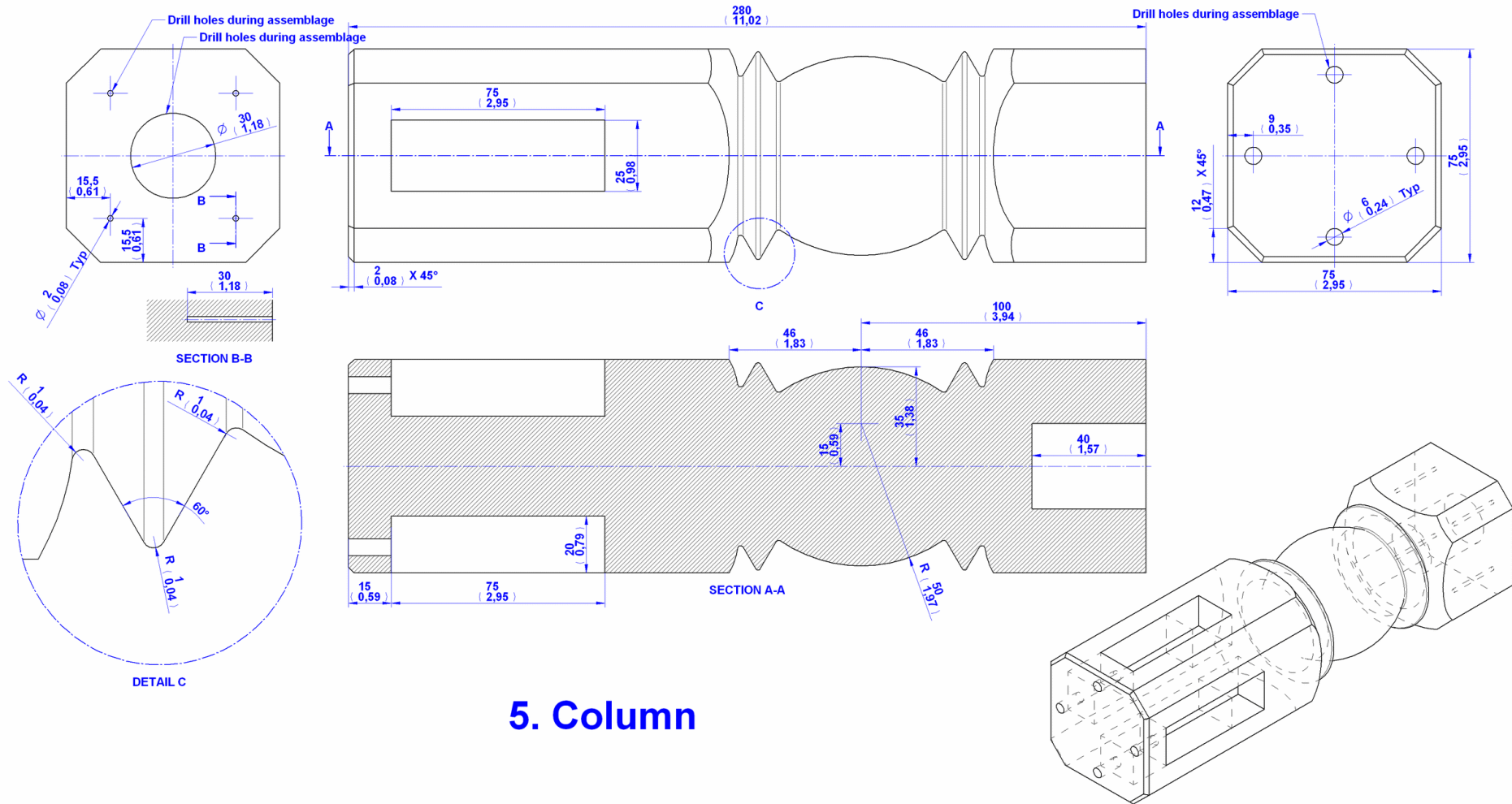
1. Seat Triangle



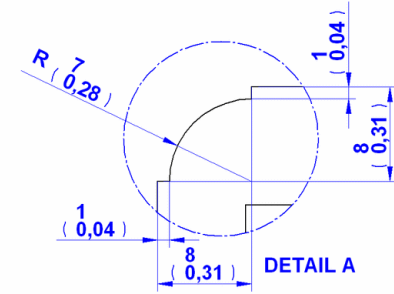
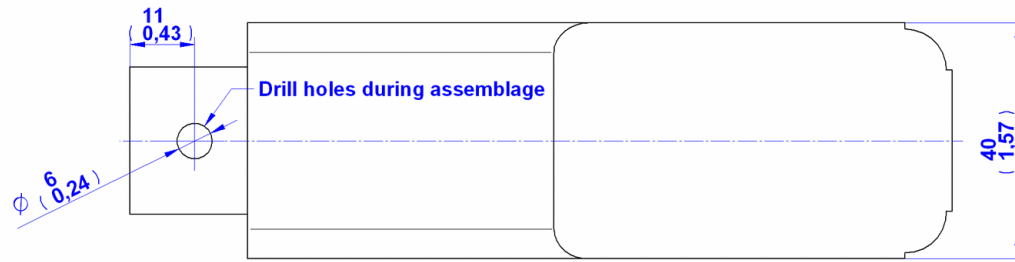


2. Seat Edge

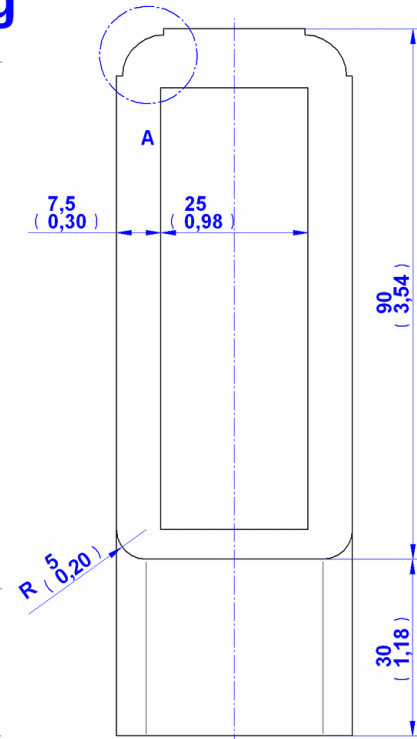
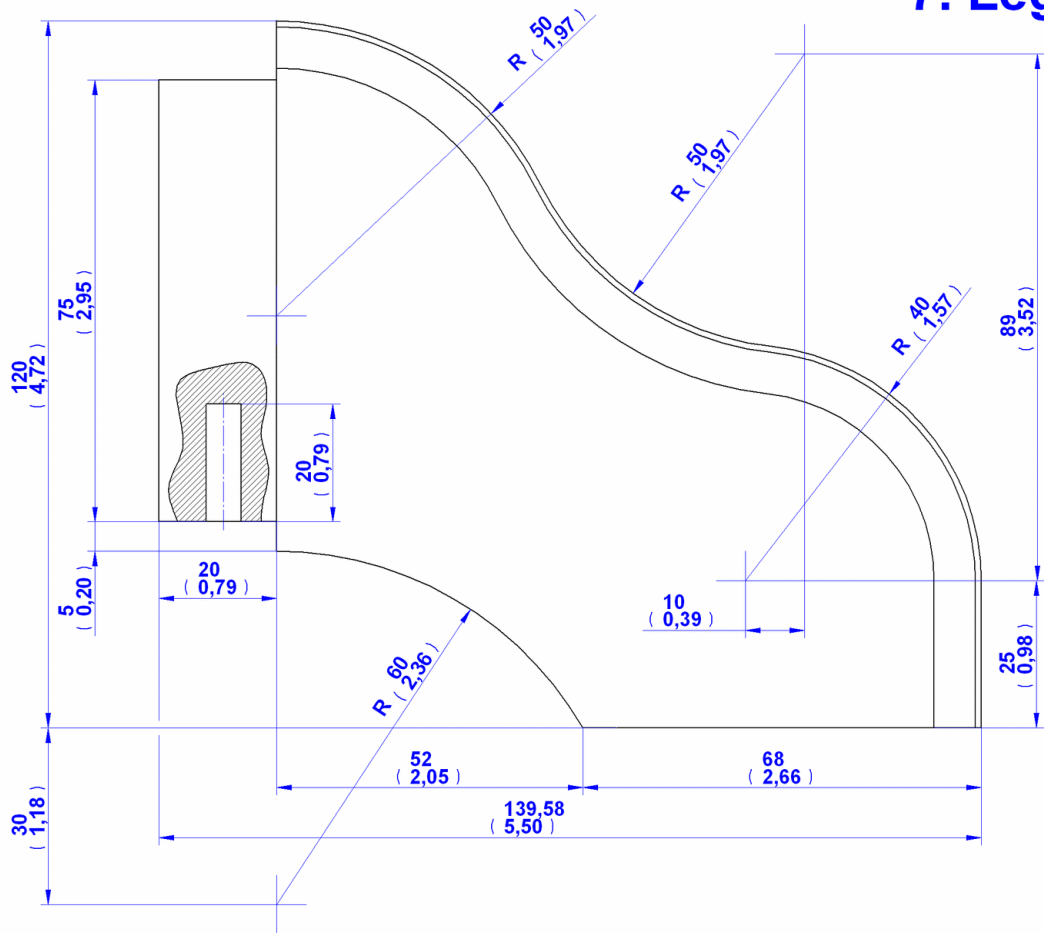


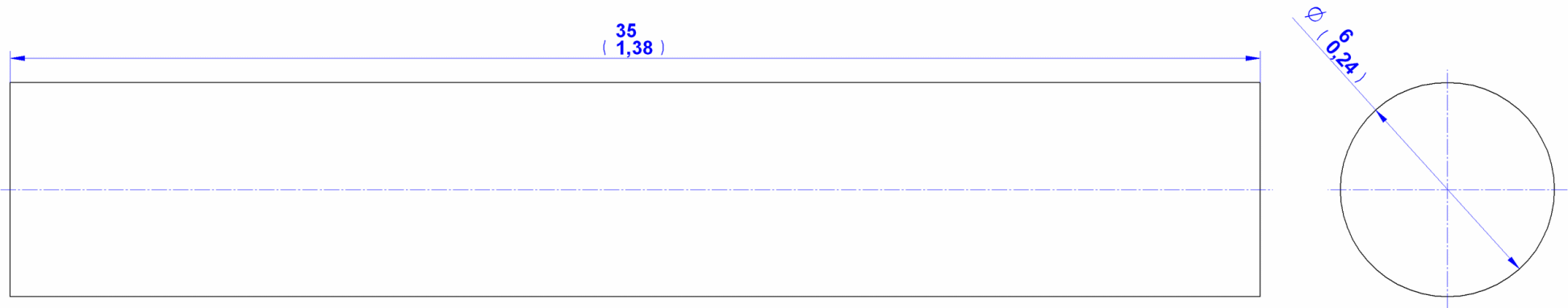


5. Column

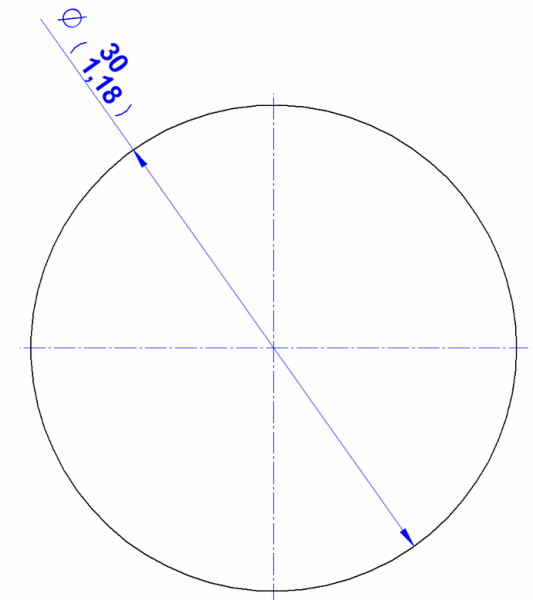
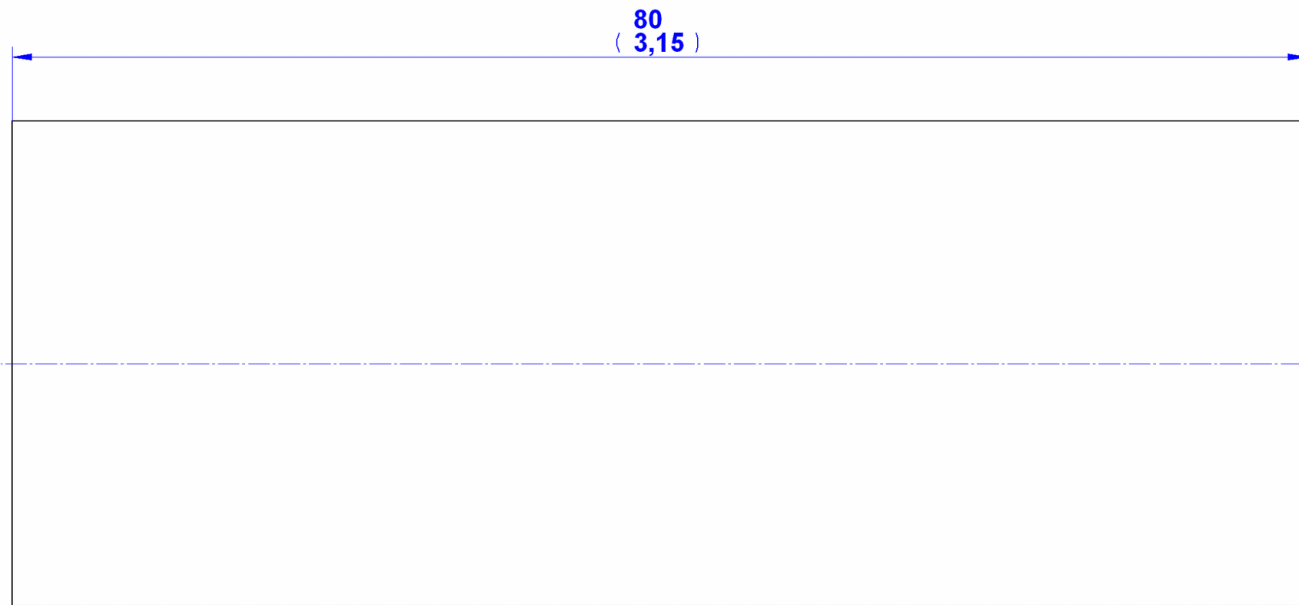


7. Leg



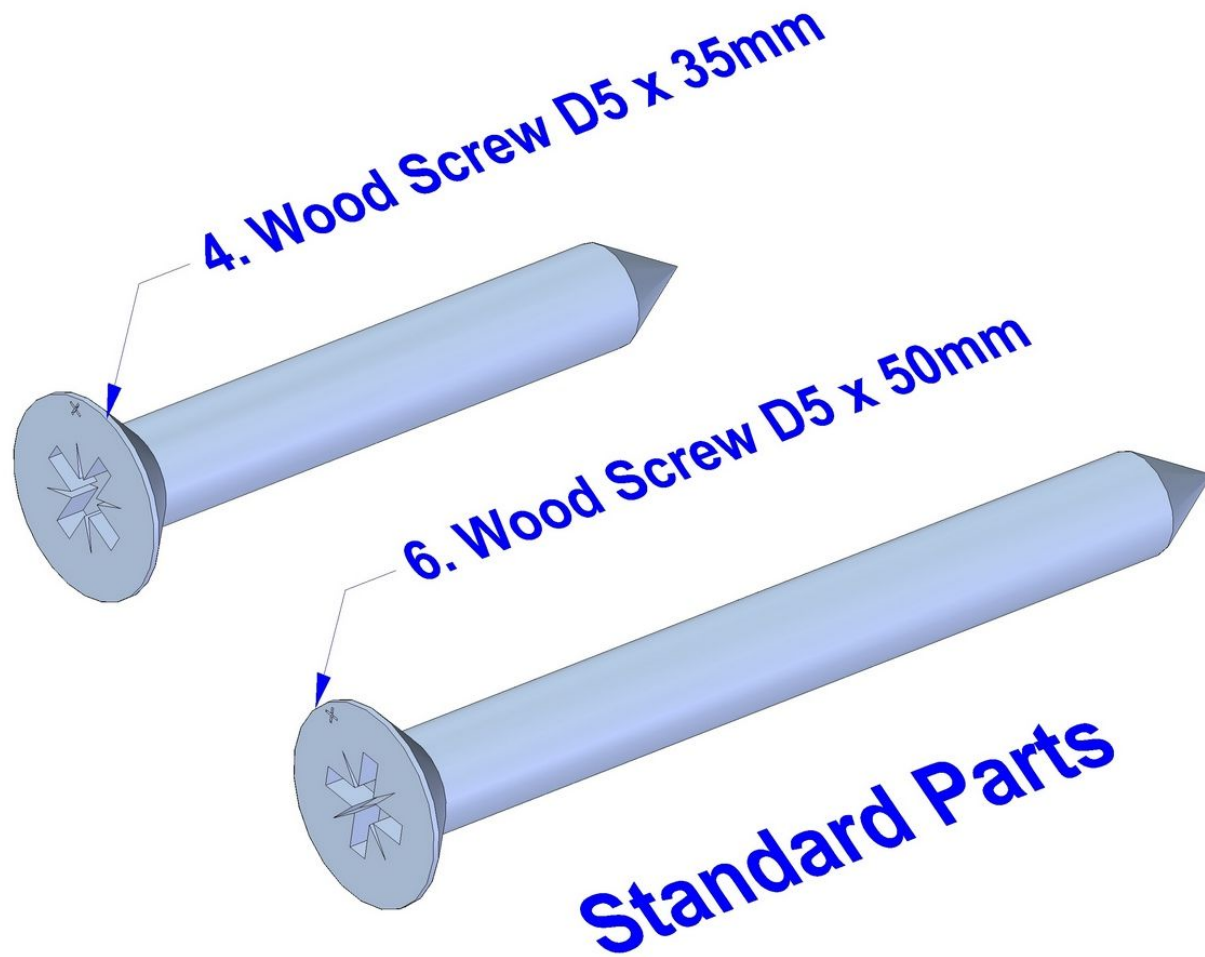


8. Dowel D6 x 35mm

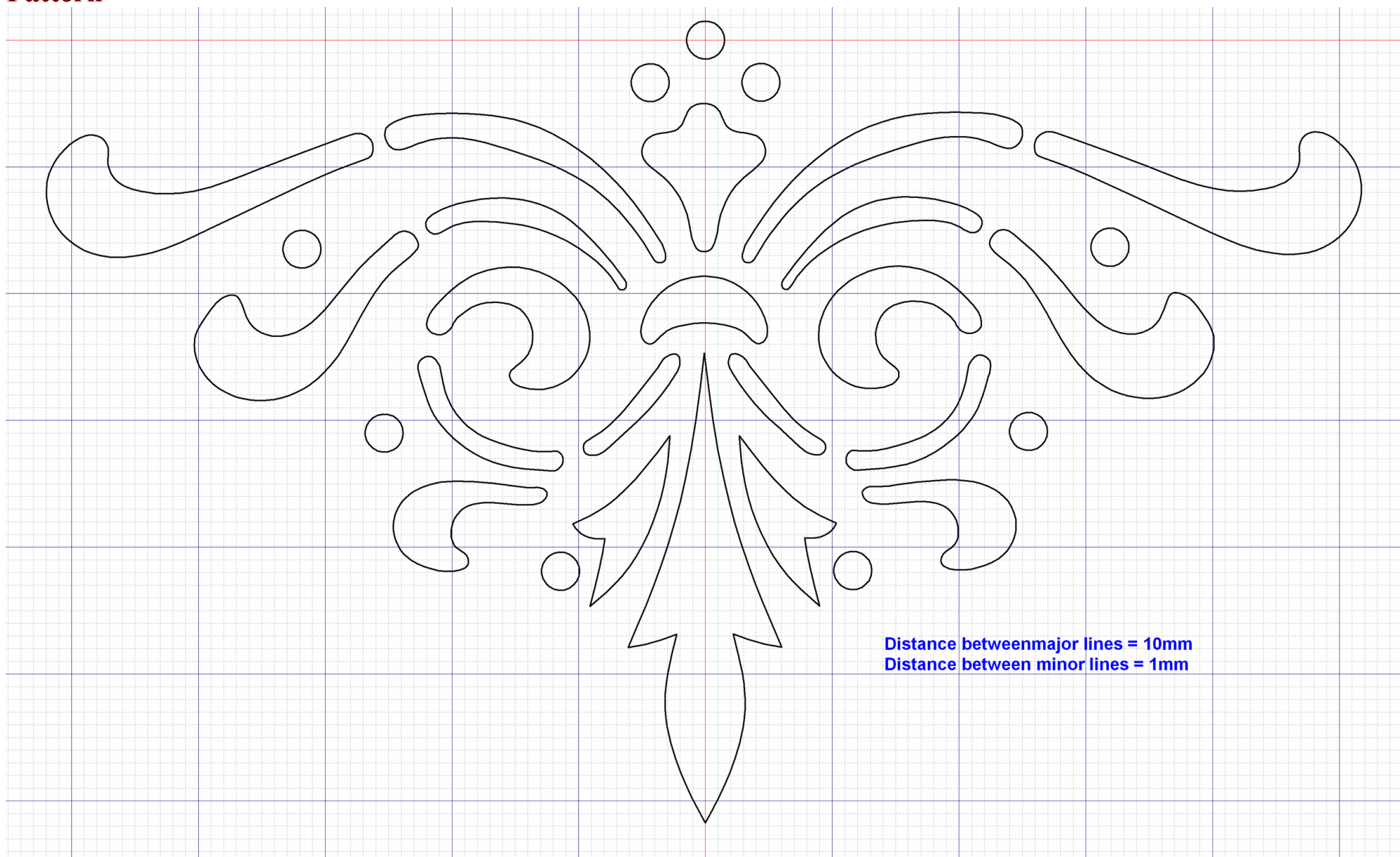


9. Seat Axle

Standard Plans



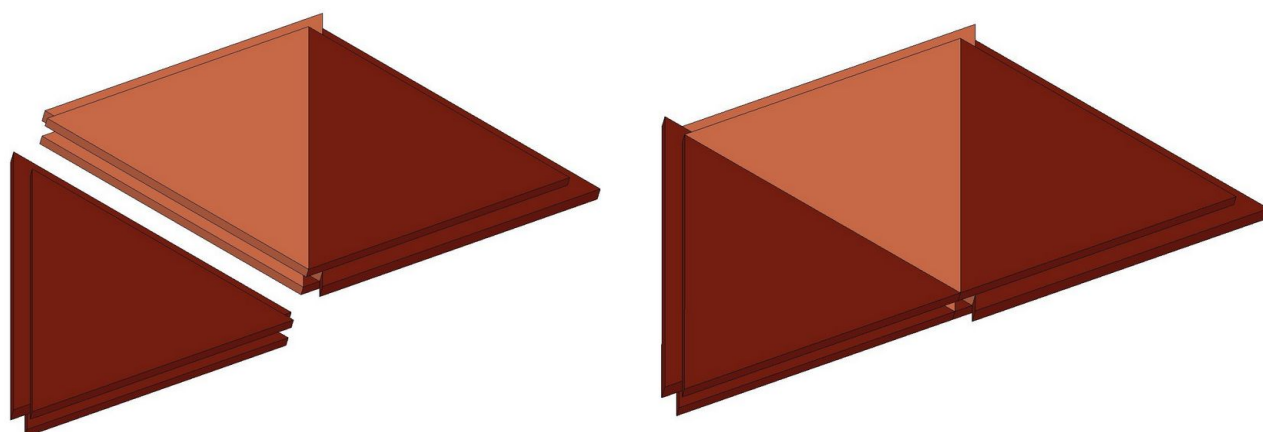
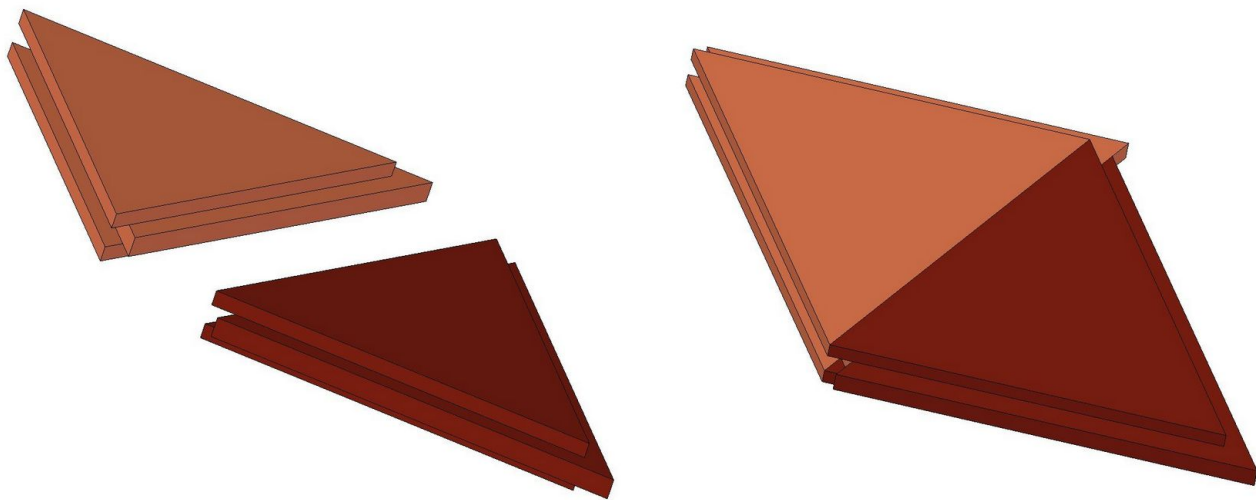
Pattern



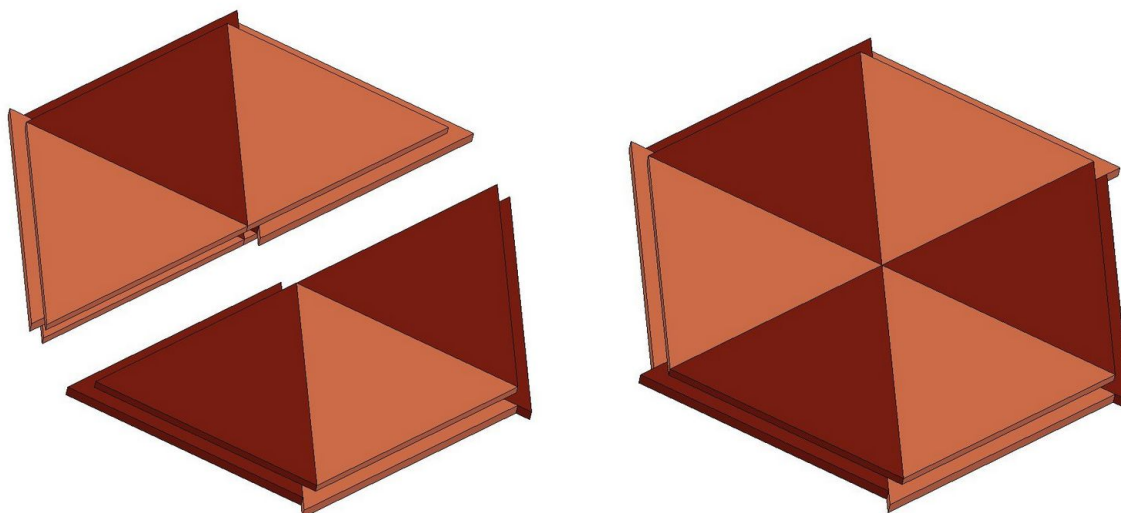
Distance between major lines = 10mm
Distance between minor lines = 1mm

Assemblage images

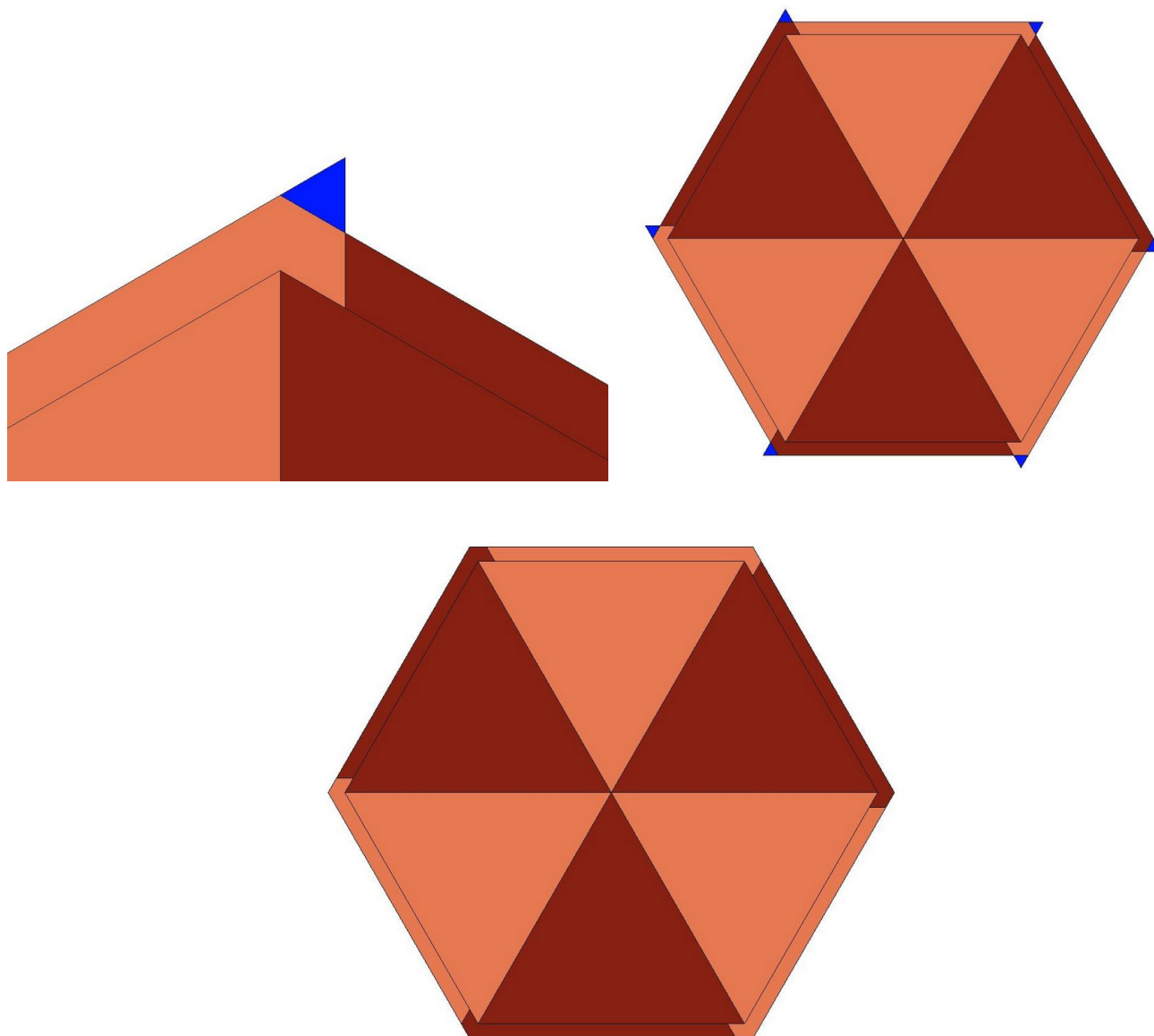
1.



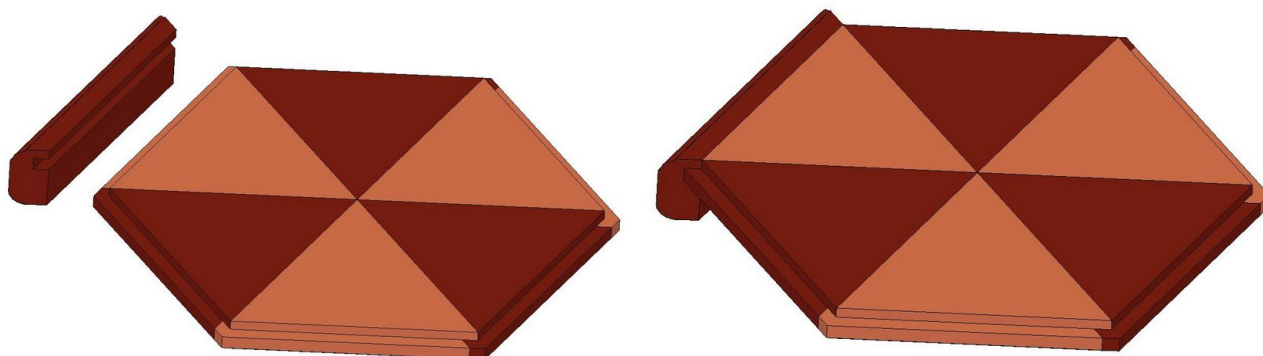
2.

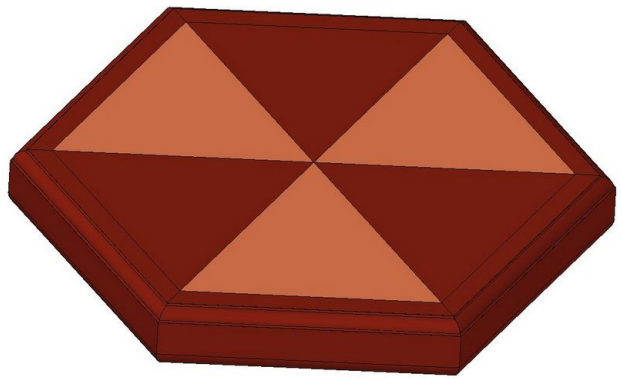
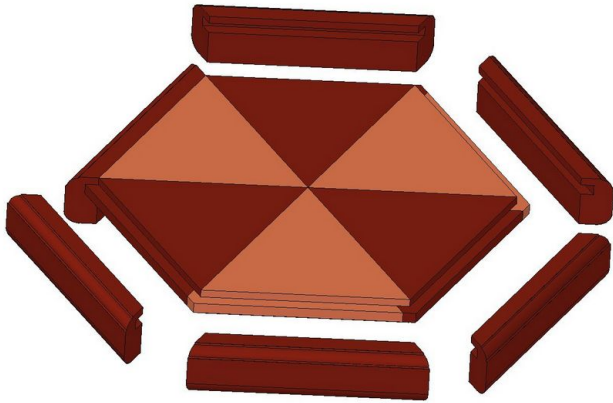


3.

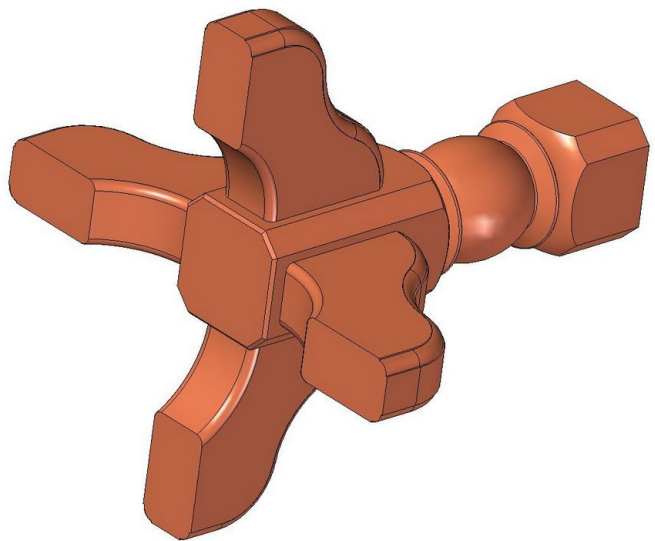
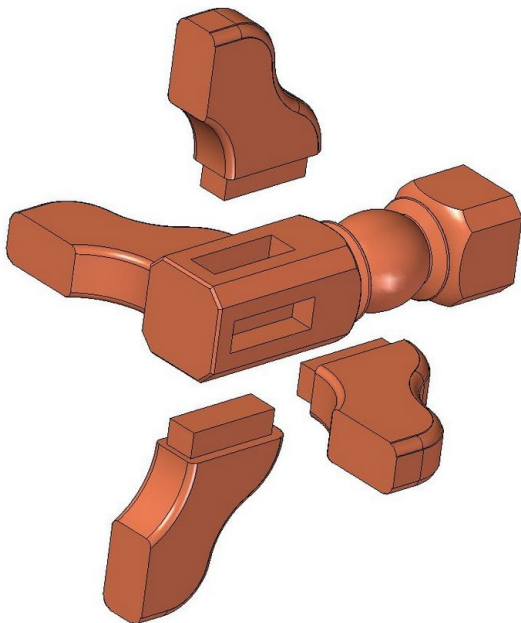
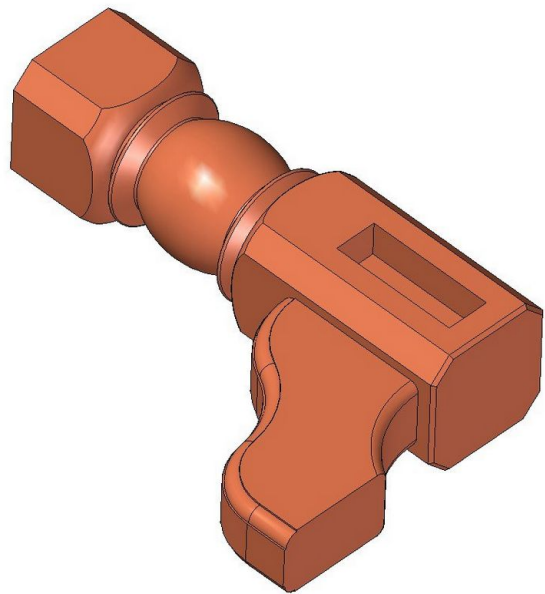
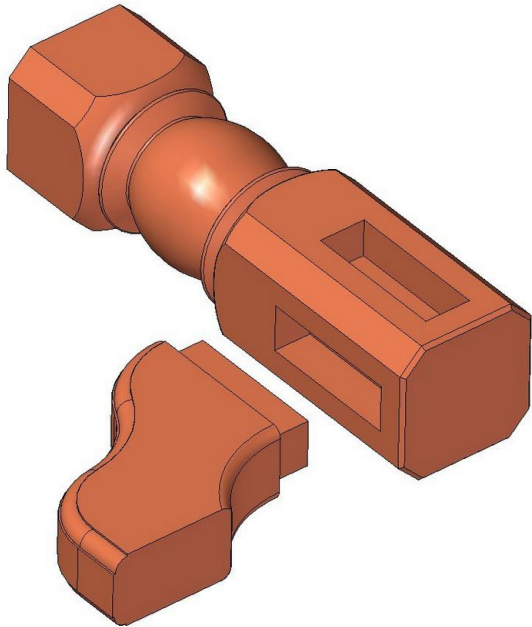


4.

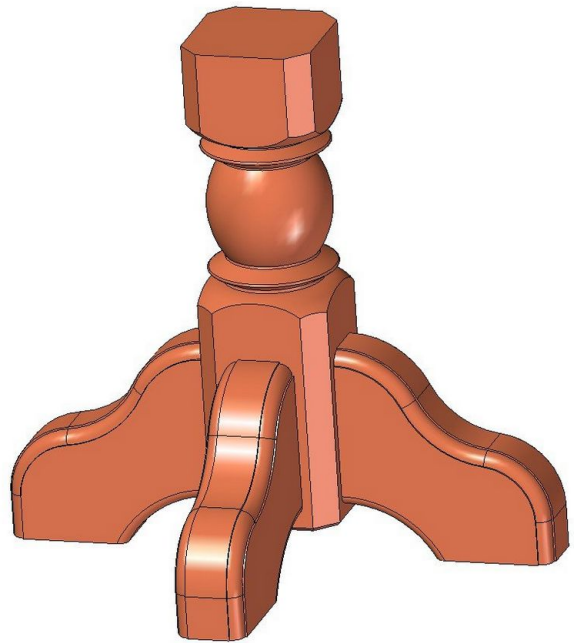
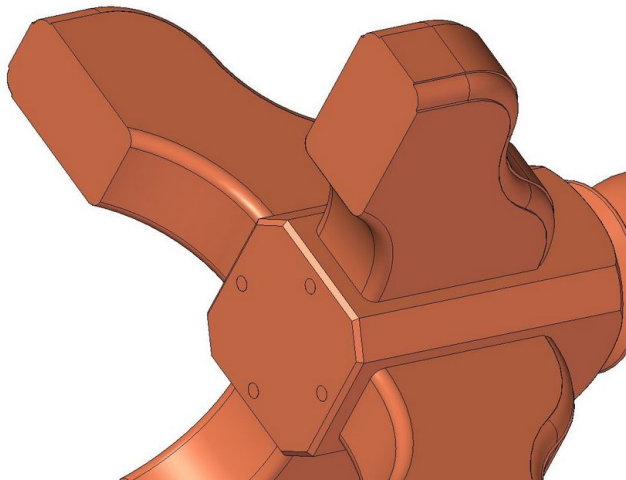
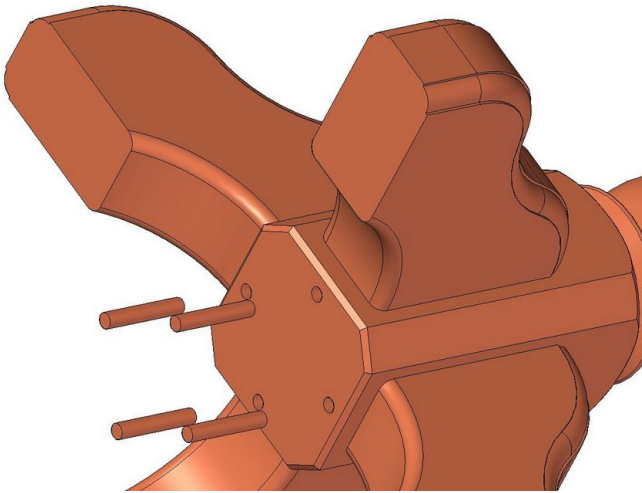
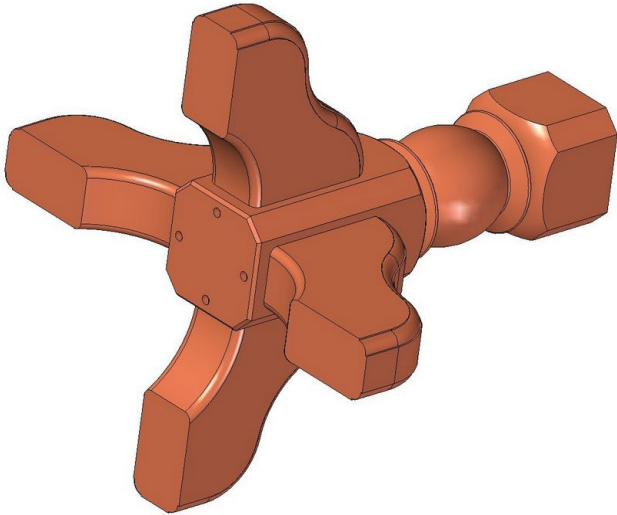




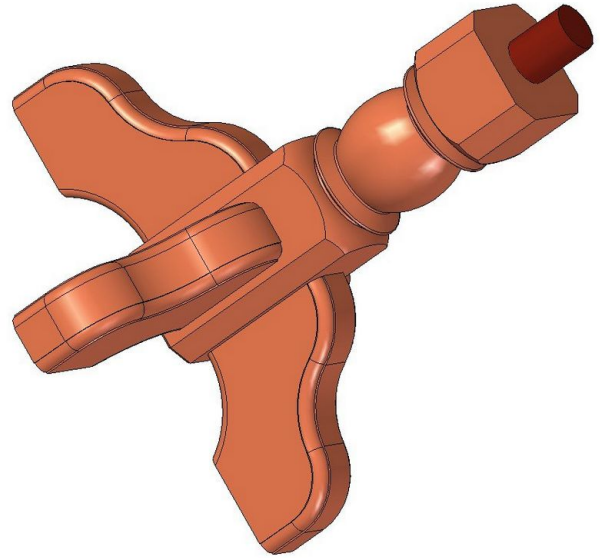
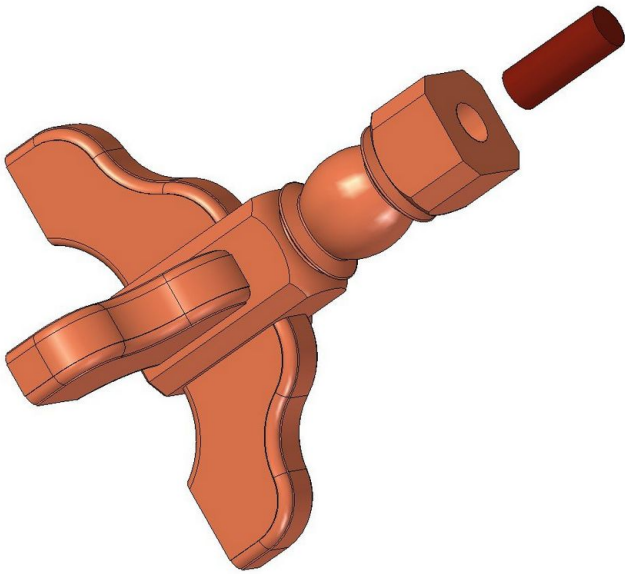
5.



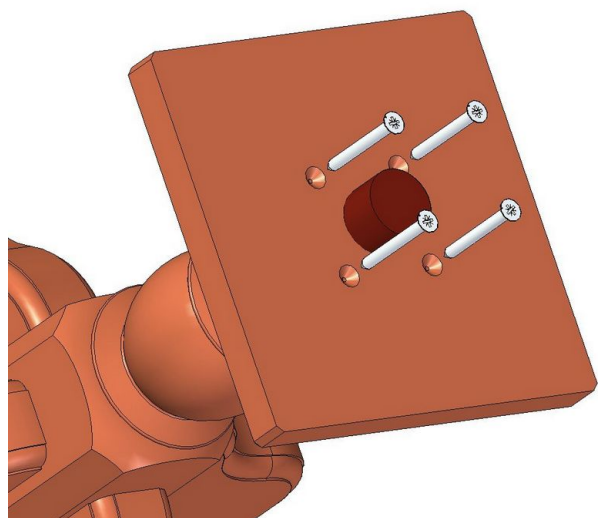
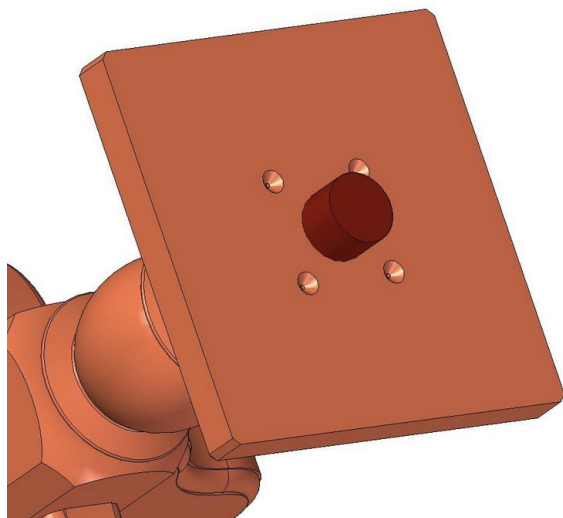
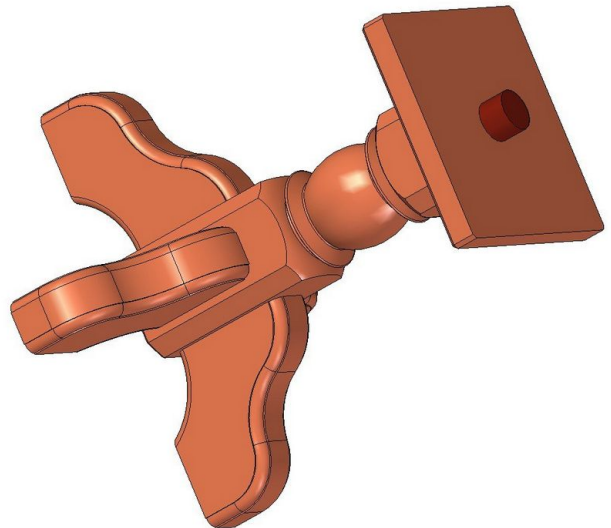
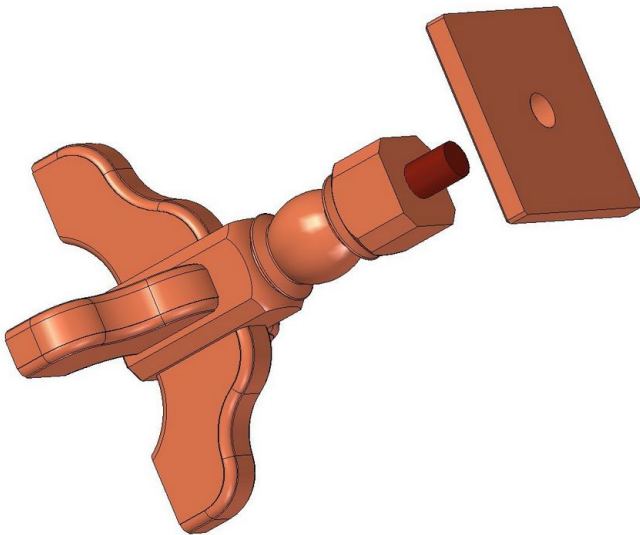
6.

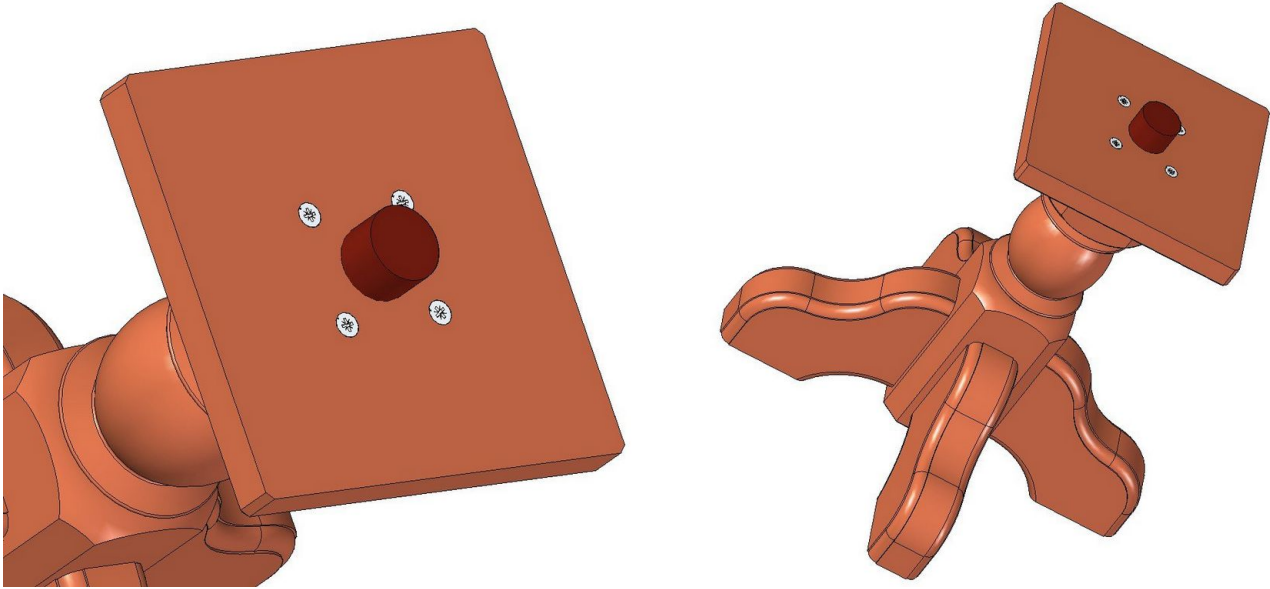


7.

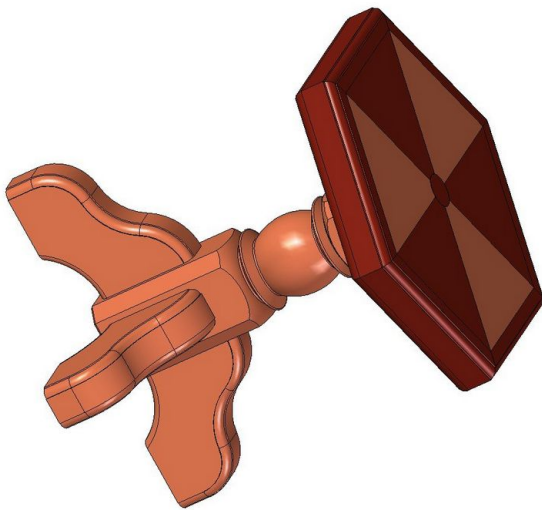
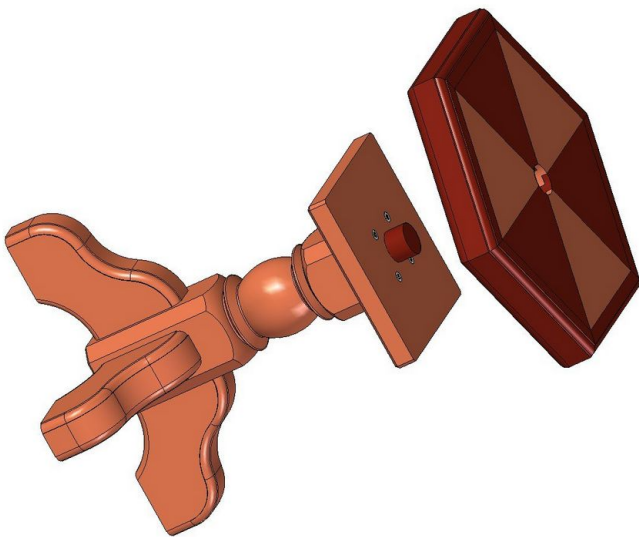
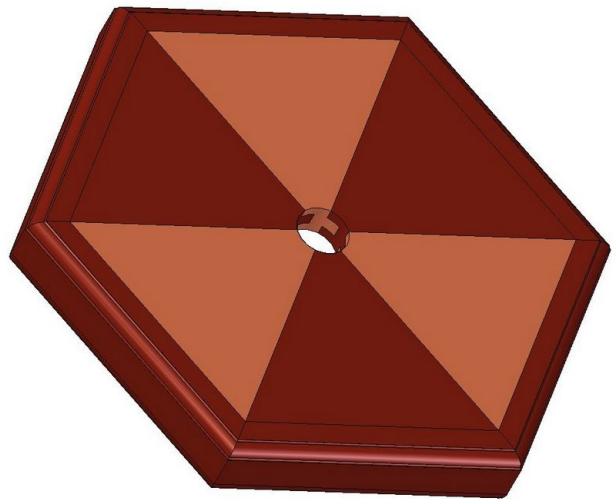
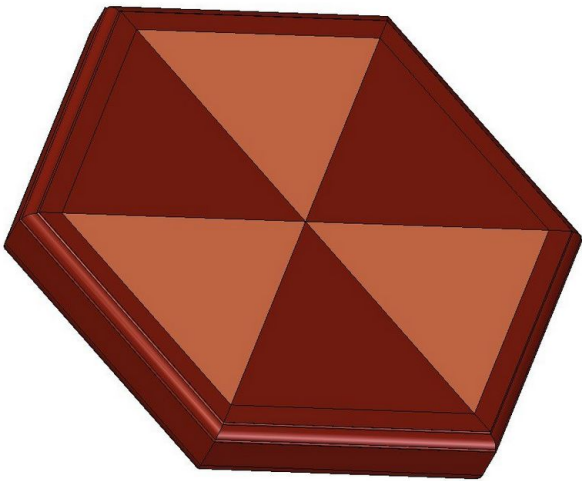


8.





9.



10.

