

## Try square plan

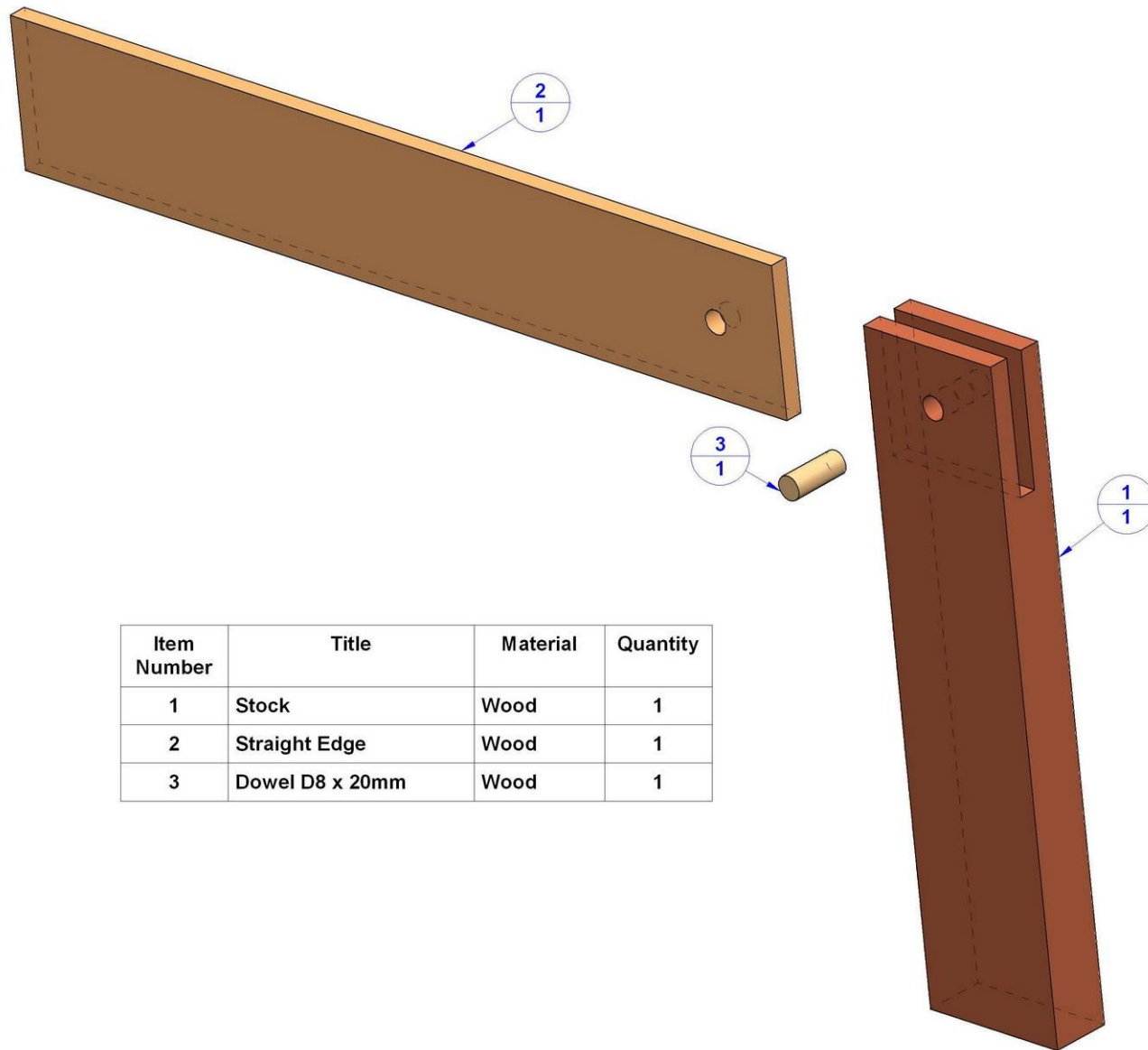
Try squares made of wood are very practical pieces of shop equipment, and are quick and easy to make. They can be made to any size up to a metre in length. Use the dimension given here only as a guide. When making this tool it is most important that the straight edge and the stock are glued up perfectly square, otherwise all the work done with it will be inaccurate.

The try square is used mostly for:

- Laying out lines perpendicular to an edge or side of a board
- Checking edges and ends of boards to see if they are square with adjoining surfaces
- Checking the width or thickness of narrow boards
- Measuring short distances
- Checking flatness

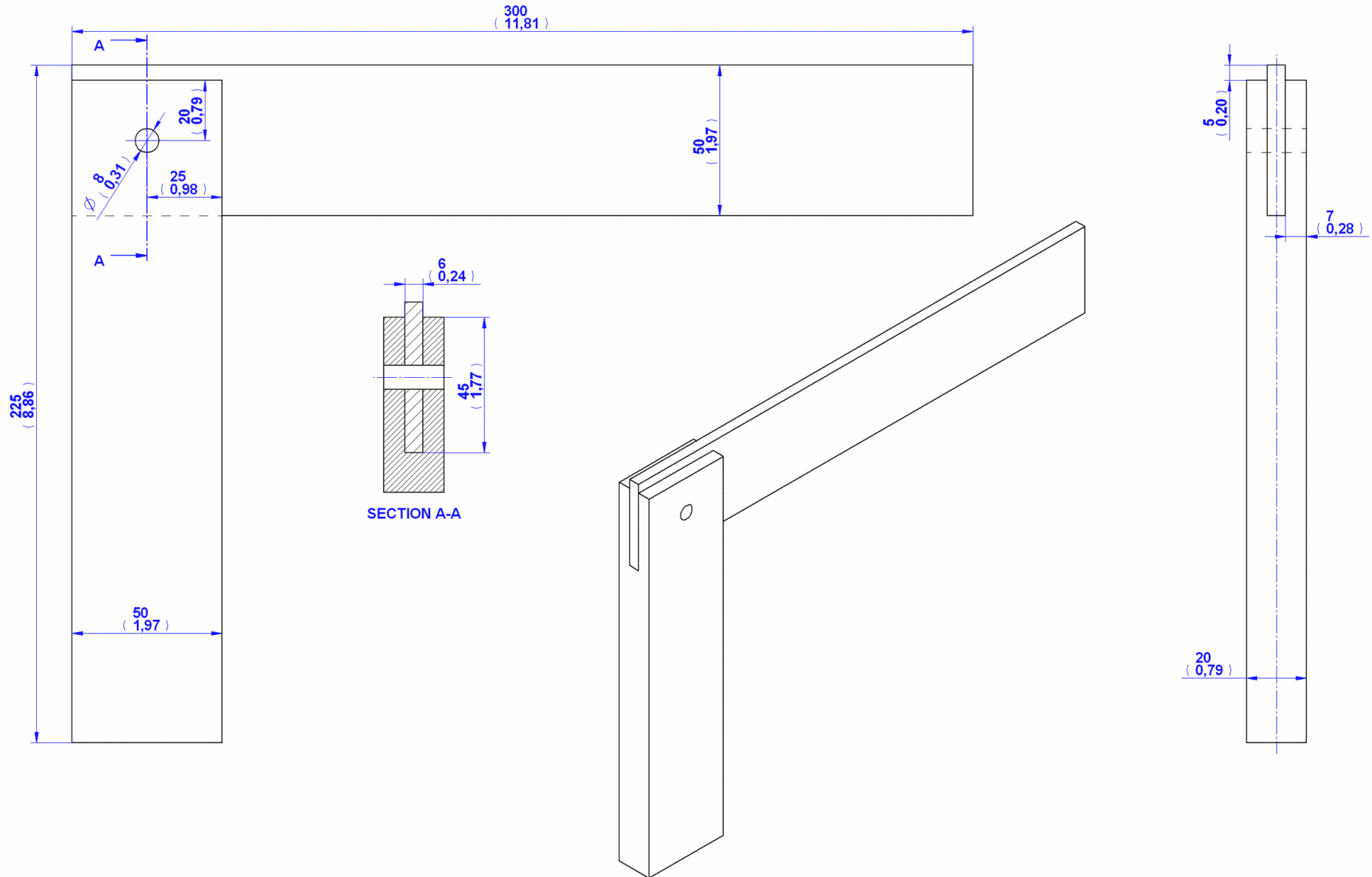


## Parts list

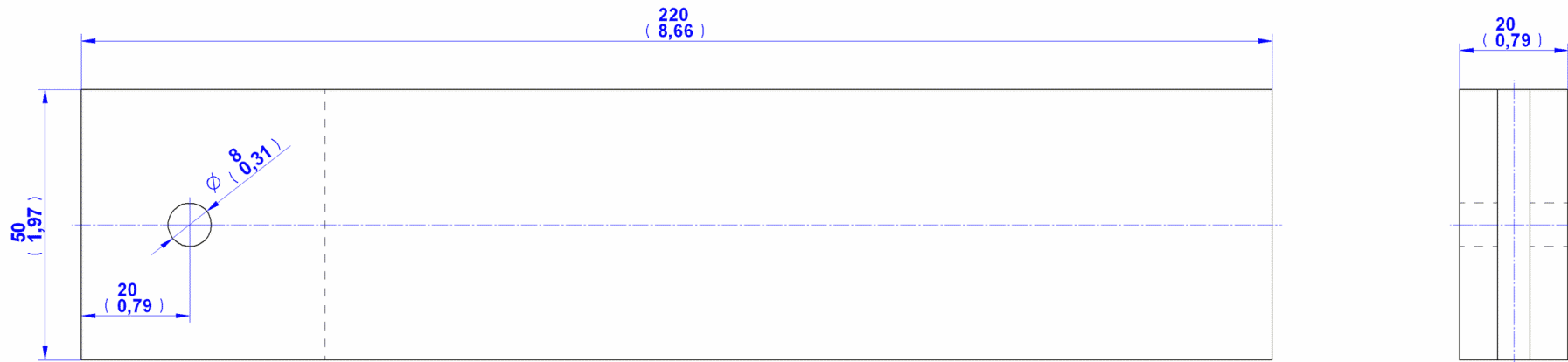


Item Number	Title	Material	Quantity
1	Stock	Wood	1
2	Straight Edge	Wood	1
3	Dowel D8 x 20mm	Wood	1

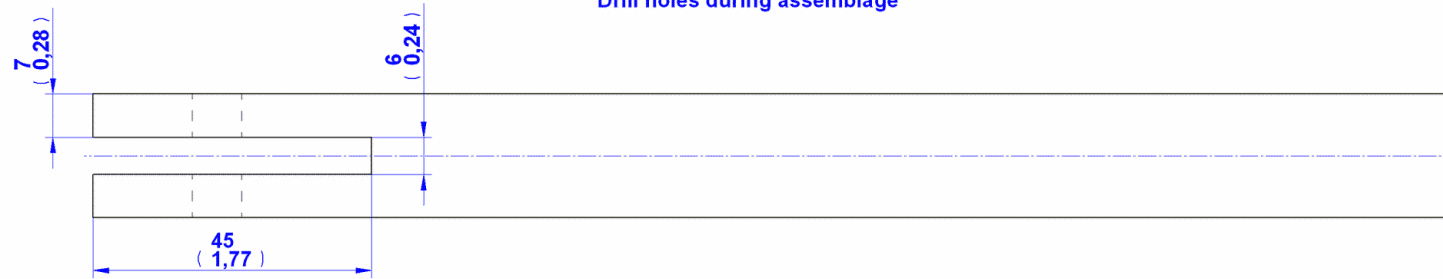
## Assembly drawing



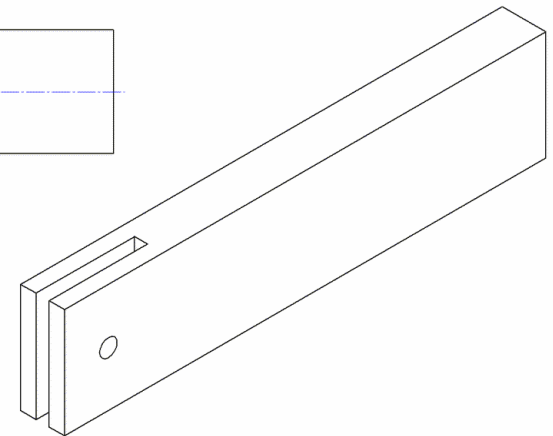
## 1. Stock



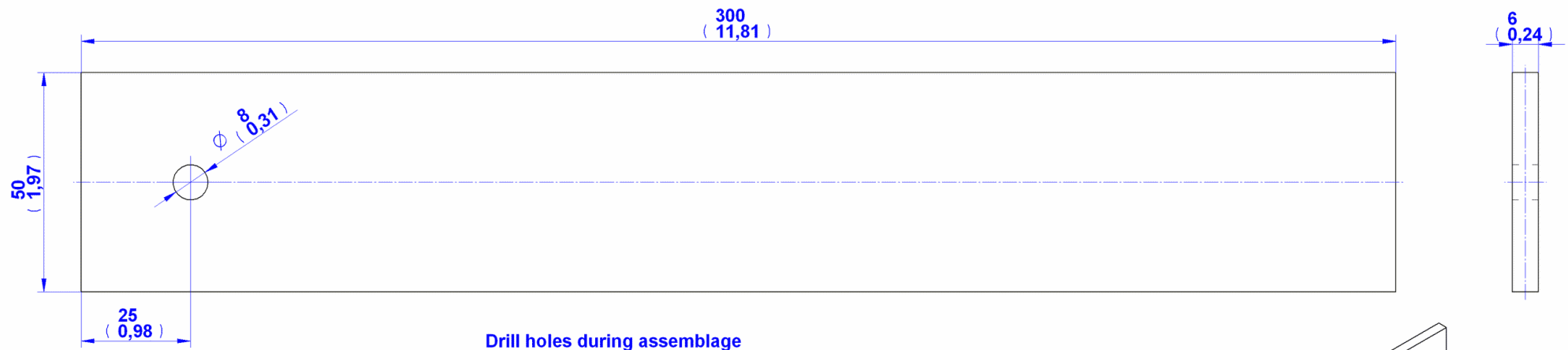
Drill holes during assemblage



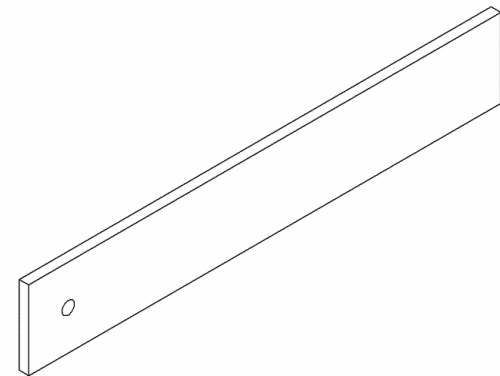
## 1. Stock



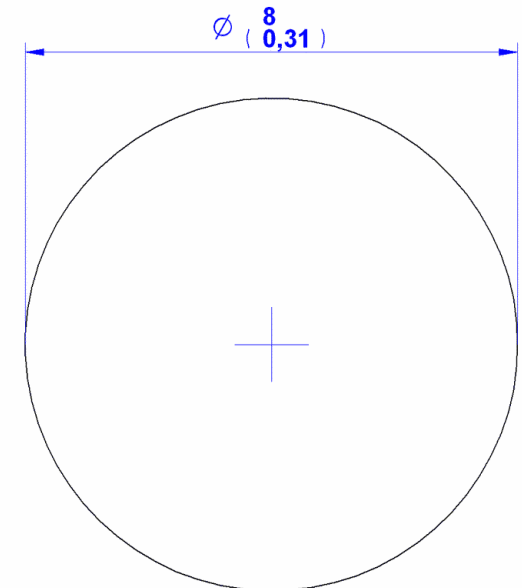
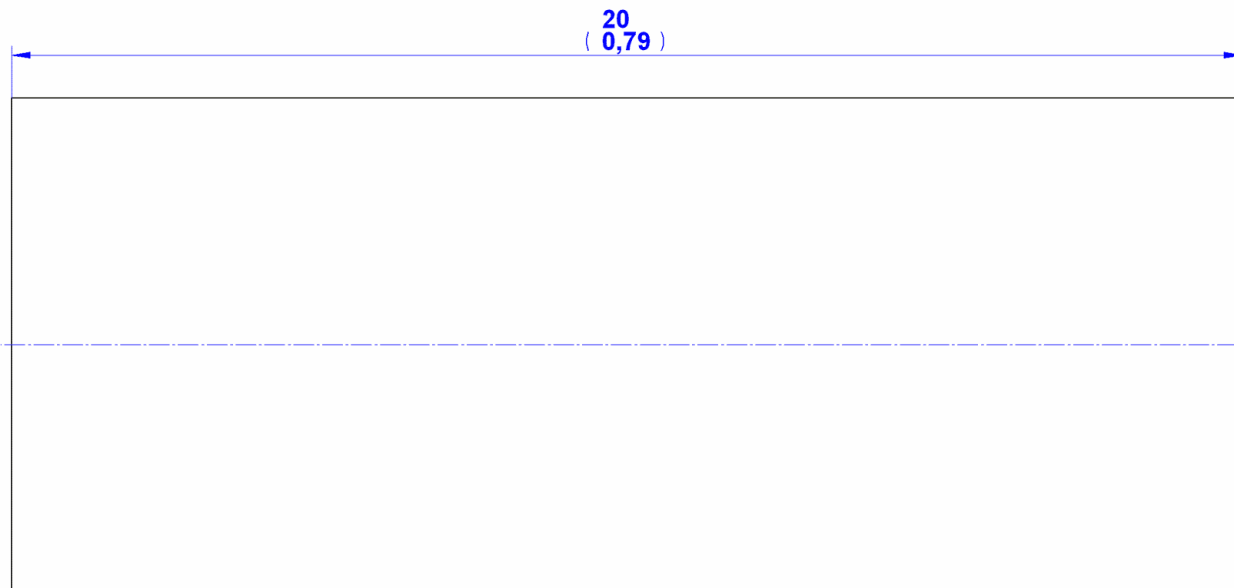
## 2. Straight Edge



## 2. Straight Edge



### 3. Dowel



**3. Dowel D8 x 20mm**

## Assemblage images

