

Folding chair plan

Here is a plan that will help you build a folding chair of a very simple construction. It is intended for outdoor use – your garden, patio or terrace, where you may sit in some quiet corner to enjoy yourselves. A distinct feature of this chair is that it is light, simple and can be folded easily and stored, which is very important when the weather conditions are bad. In the picture you can see the chair in the folded and unfolded position.

Dimensions of the completed chair (unfolded) according to our plan are as follows: L 752mm (29.61in), W 575mm (22.64in) and H 665mm (26.18in).



If you take a closer look at the picture, you can notice that the construction of this chair is the same as of a deck chair (porch chair); the only difference is that the seat is not made of canvas, but of wood. Because of this, the legs are somewhat larger so that battens (Parts 3 – Seat crossbar) can be attached to them. The size of the legs allows you to design them in various shapes, the only thing you have to keep in mind is that the edge (to which the battens are attached) must remain flat or slightly concave.

The main criterion for designing this chair was that it can be quickly and cheaply made by people who do not often engage in woodworking and do not have an equipped workshop. For this reason, we have:

- Wooden chair parts - all four legs are of the same simple shape, and the crossbar parts are identical, only their length is different.
- Fasteners - all chair parts are connected with fasteners, i.e., there are no woodworking joints used in its construction.

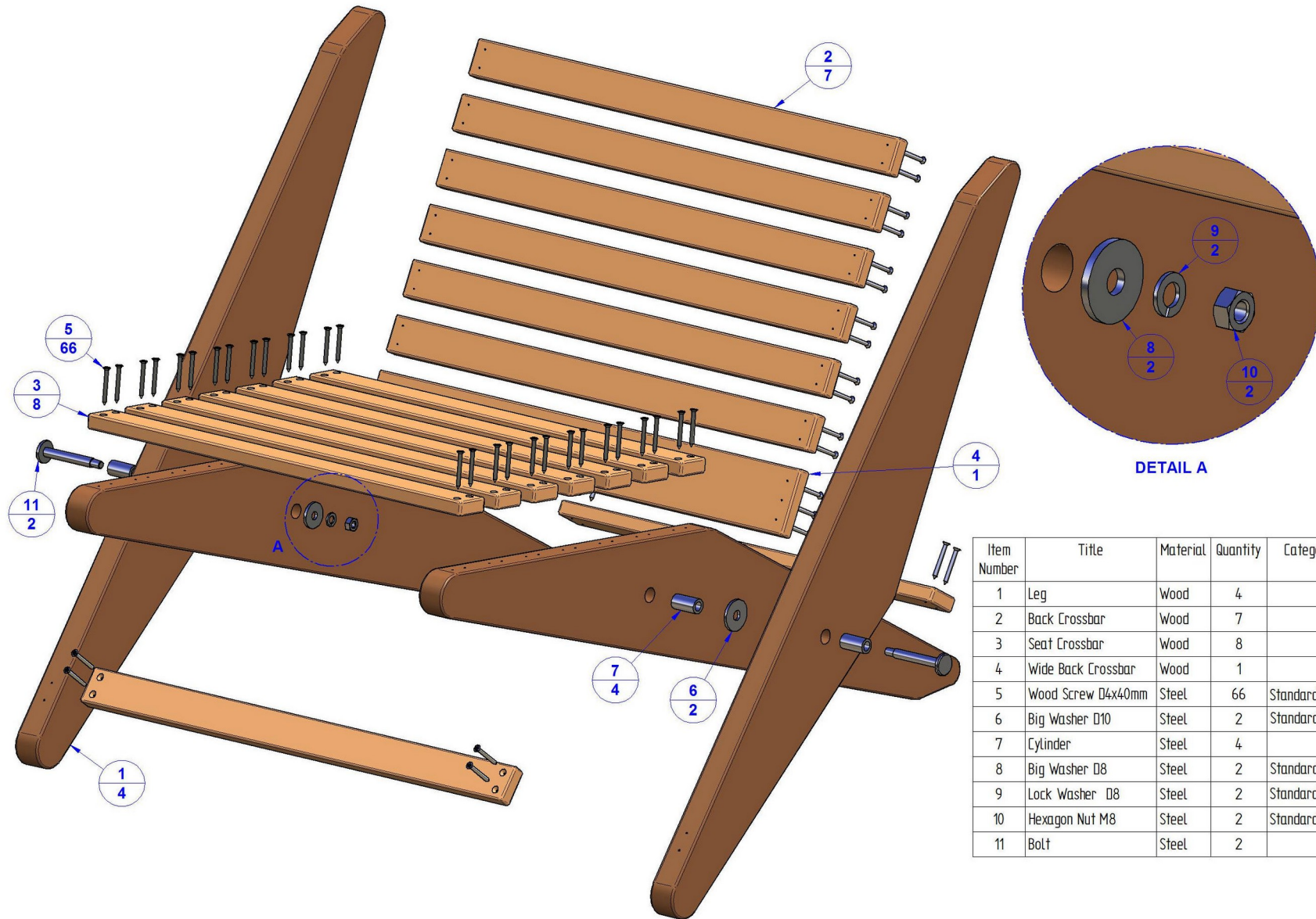
Also, one of the criteria while designing this chair was that it should take as little space as possible in the folded position, which is very important if you have a lack of space.

The chair made according to this plan is not meant for big and heavy people, although it can be easily adjusted to suit them, too, by slightly increasing the dimensions of the chair (its parts), using high quality hardwood and additional strengthening of the first section of the crossbar (Part 3) in line on which the legs parts lean and form the seat.

If you decide to build a folding chair based on the plan given, we hope you will be satisfied with the result. Anyway, it would be nice of you to share your impressions with us!

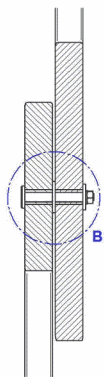
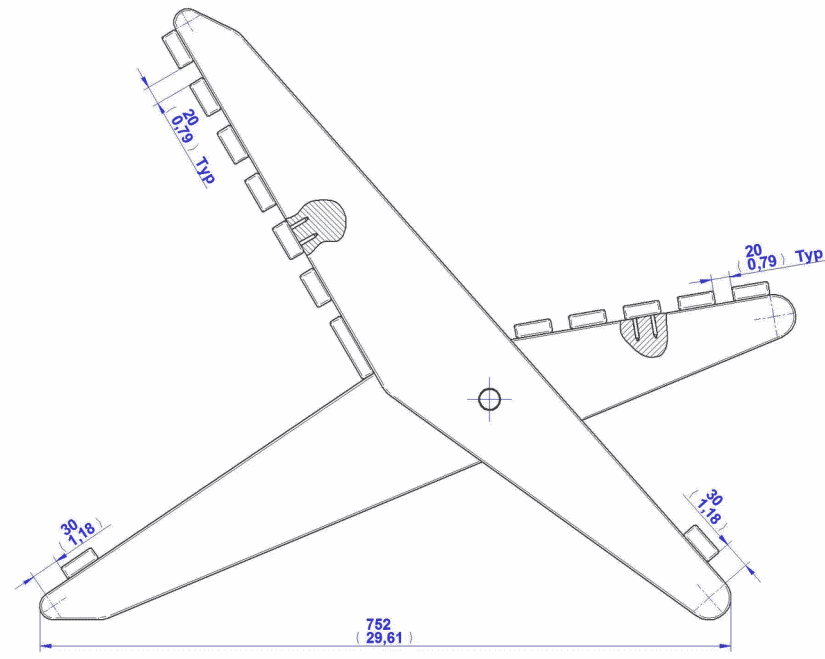
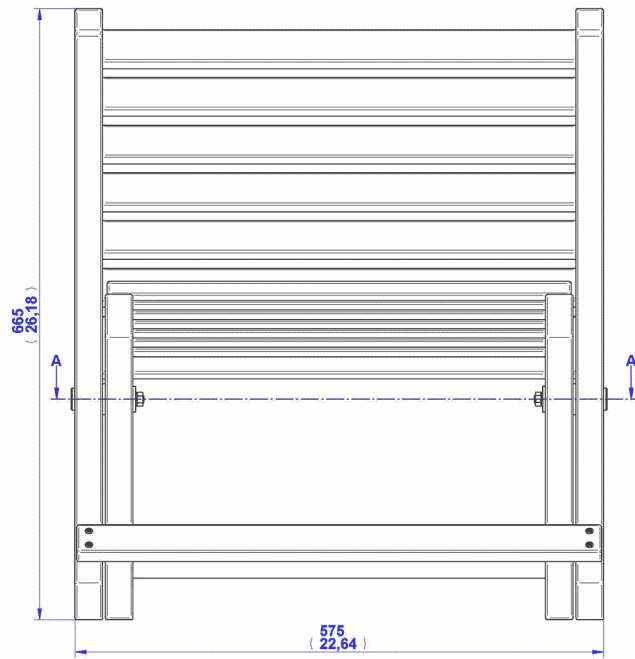
Apply the finish of your choice.

Parts List

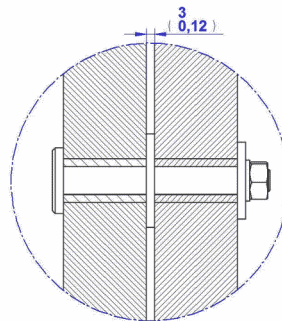
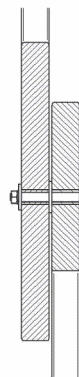


Item Number	Title	Material	Quantity	Category
1	Leg	Wood	4	
2	Back Crossbar	Wood	7	
3	Seat Crossbar	Wood	8	
4	Wide Back Crossbar	Wood	1	
5	Wood Screw D4x40mm	Steel	66	Standard Part
6	Big Washer D10	Steel	2	Standard Part
7	Cylinder	Steel	4	
8	Big Washer D8	Steel	2	Standard Part
9	Lock Washer D8	Steel	2	Standard Part
10	Hexagon Nut M8	Steel	2	Standard Part
11	Bolt	Steel	2	

Assembly Drawing

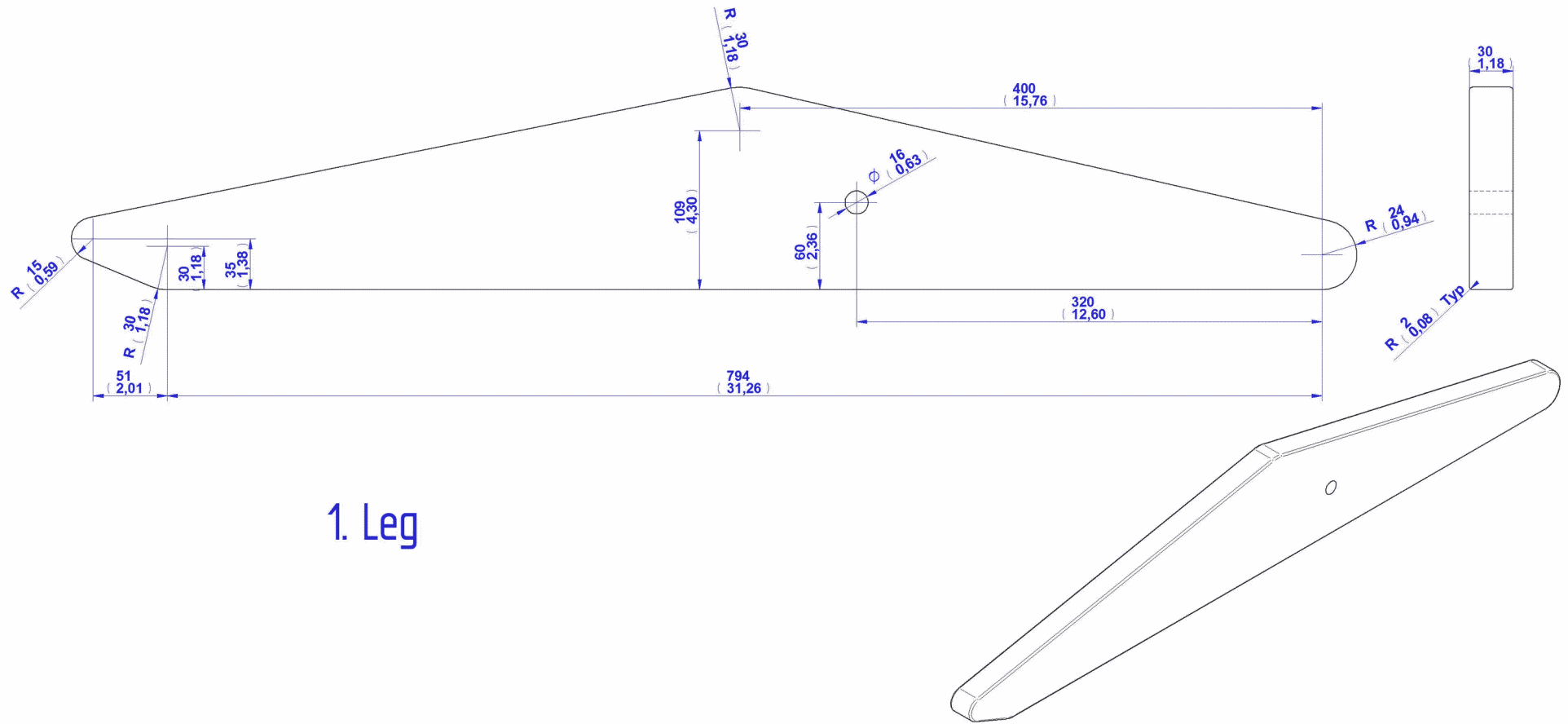


SECTION A-A

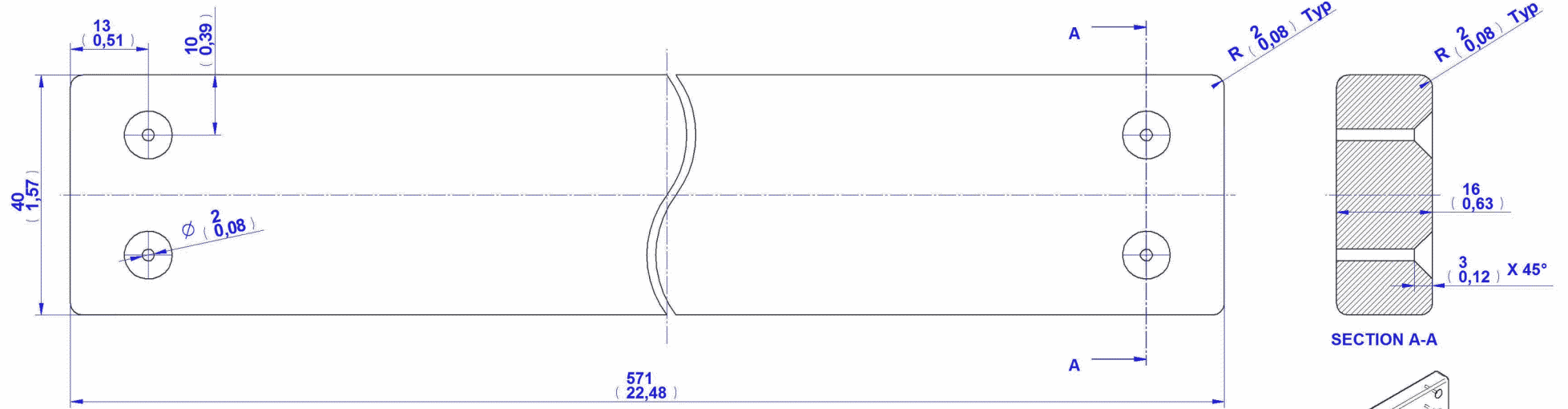


DETAIL B

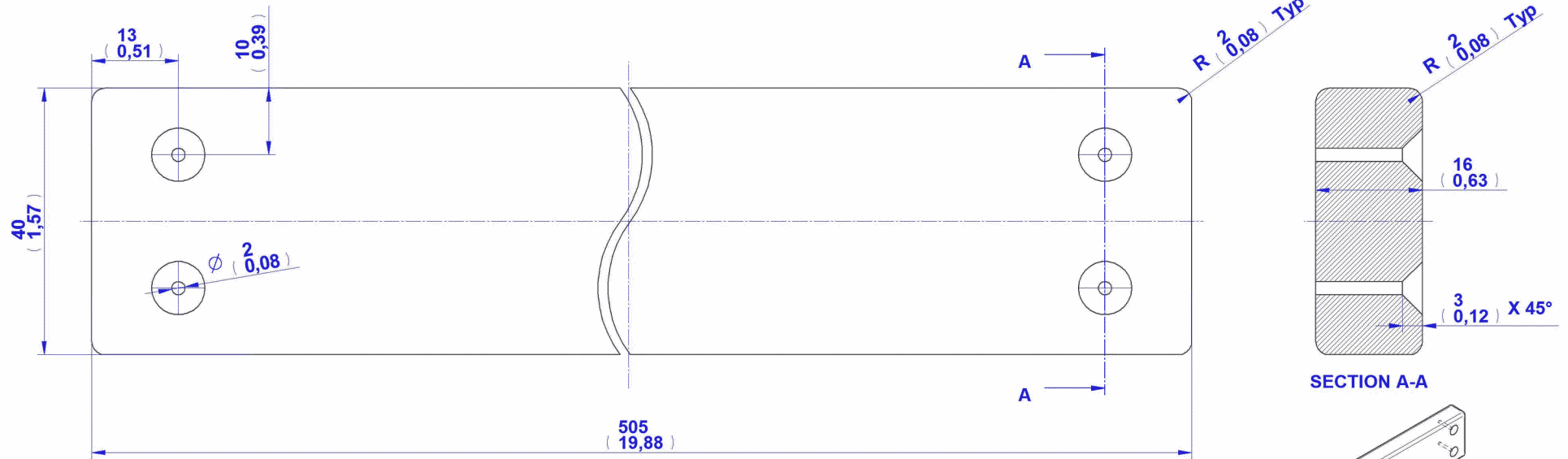




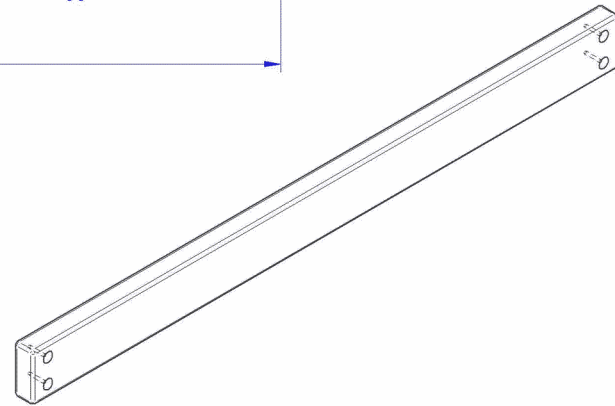
1. Leg

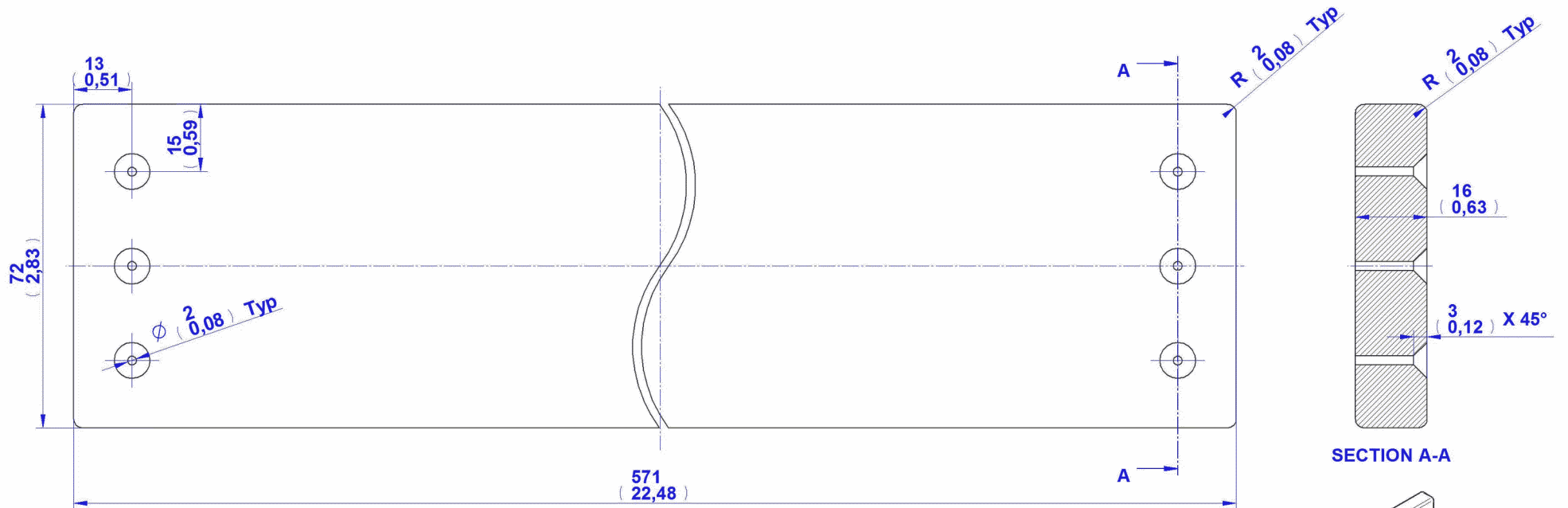


2. Back Crossbar

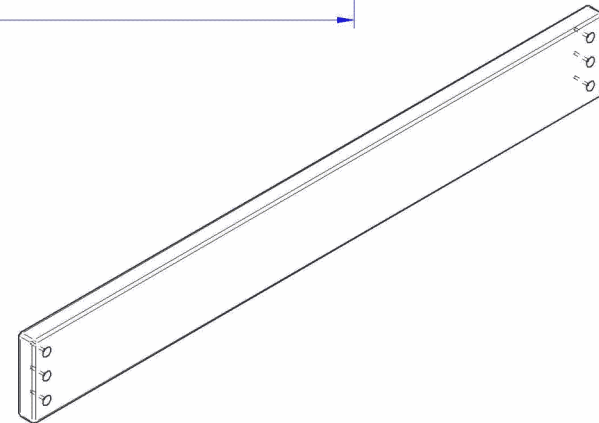


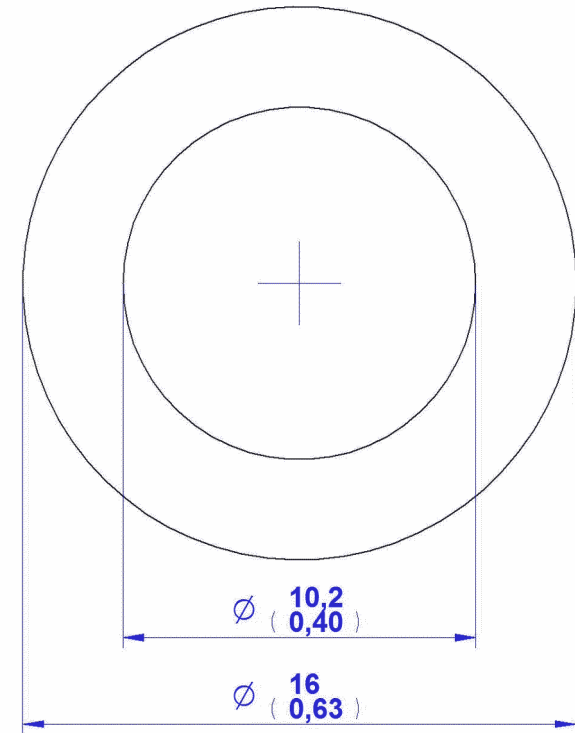
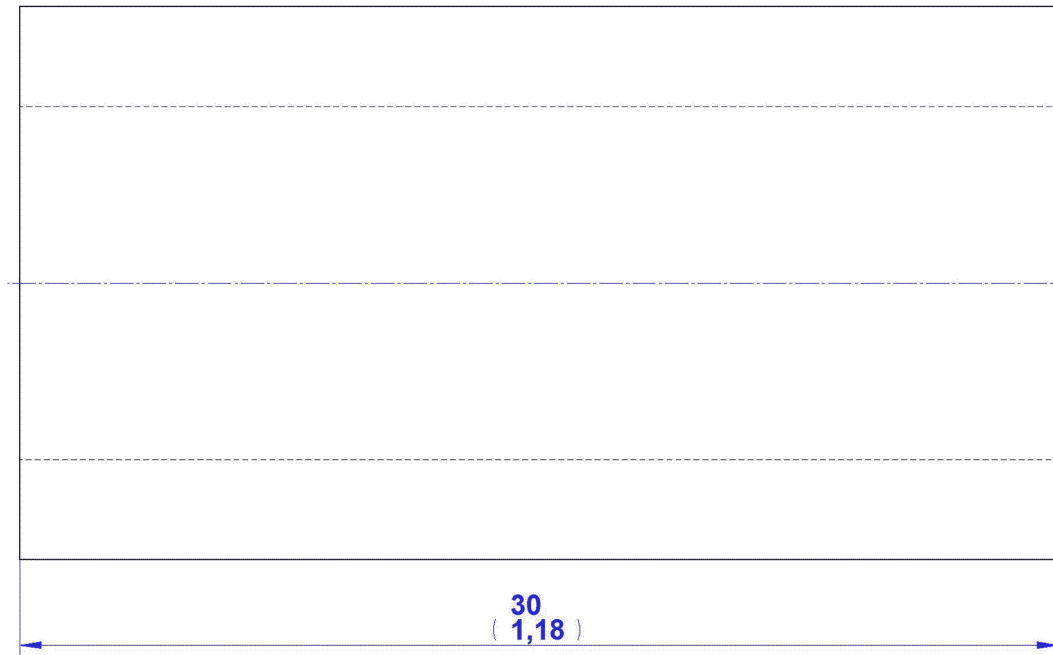
3. Seat Crossbar



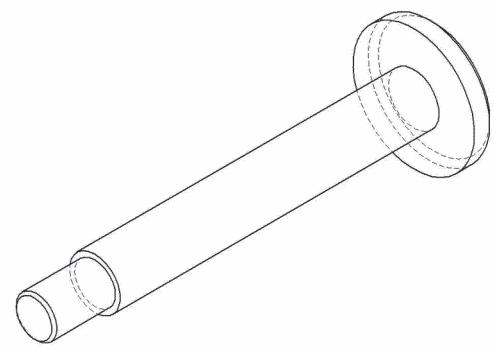
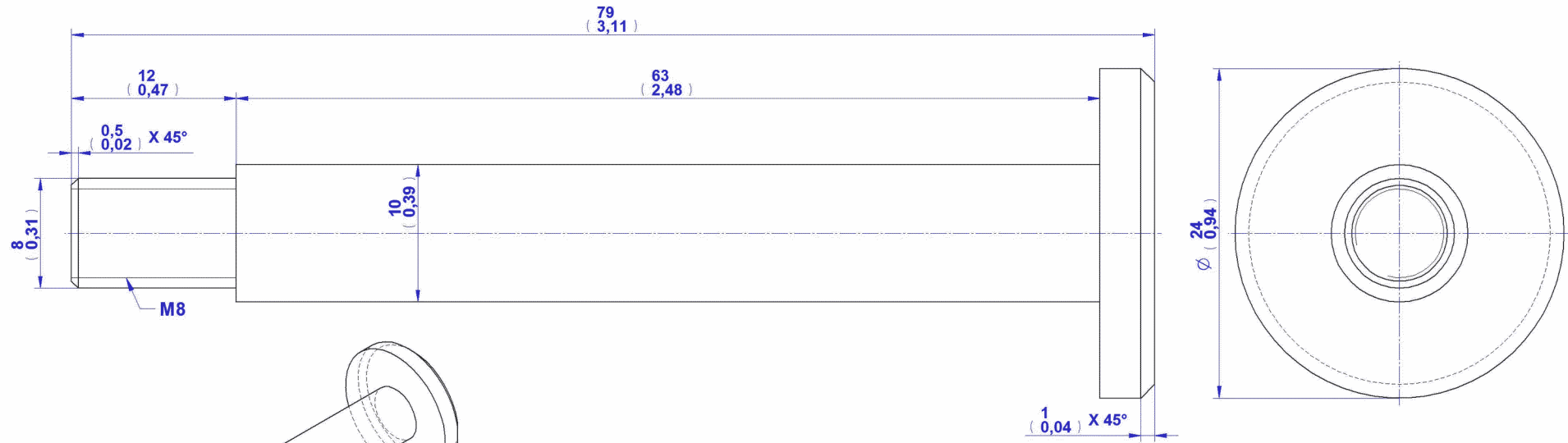


4. Wide Back Crossbar





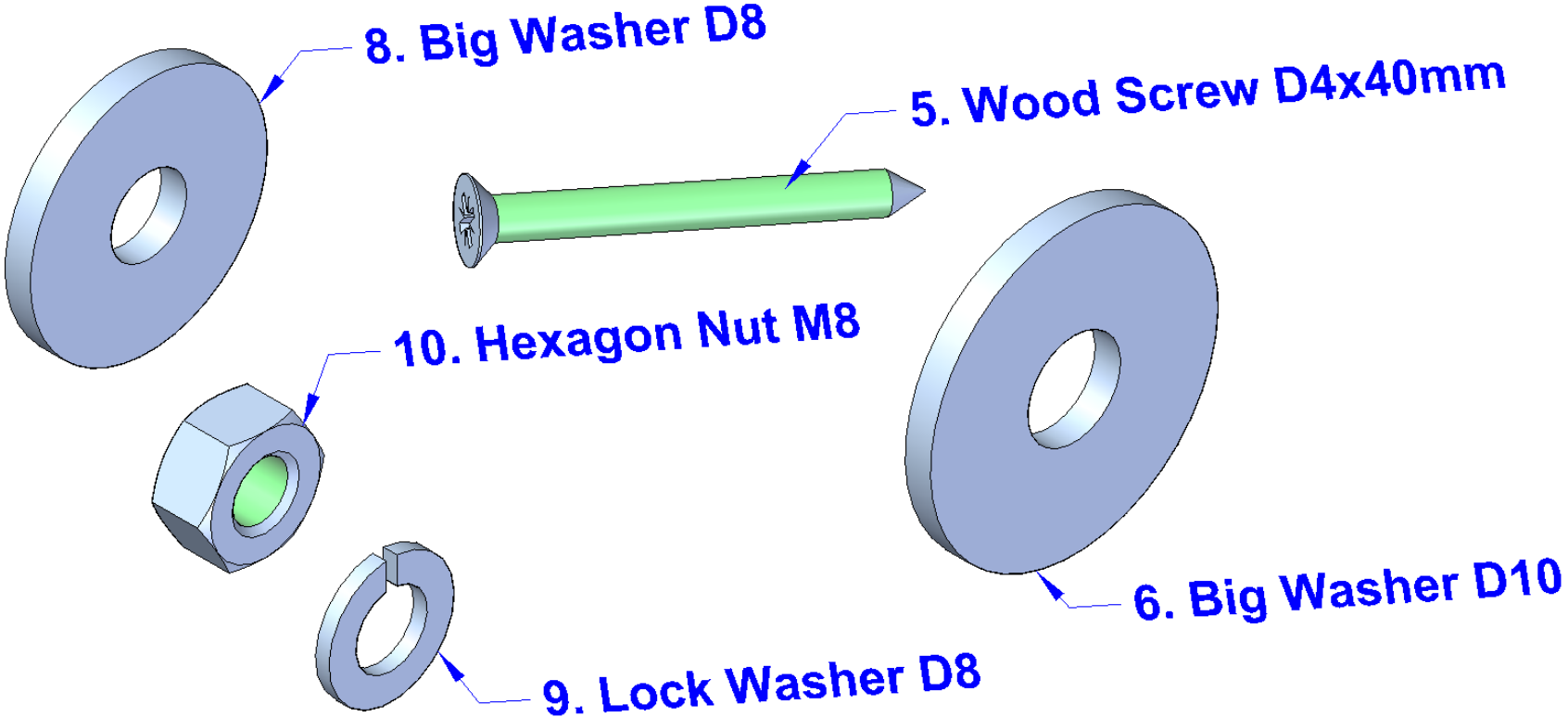
7. Cylinder



11. Bolt

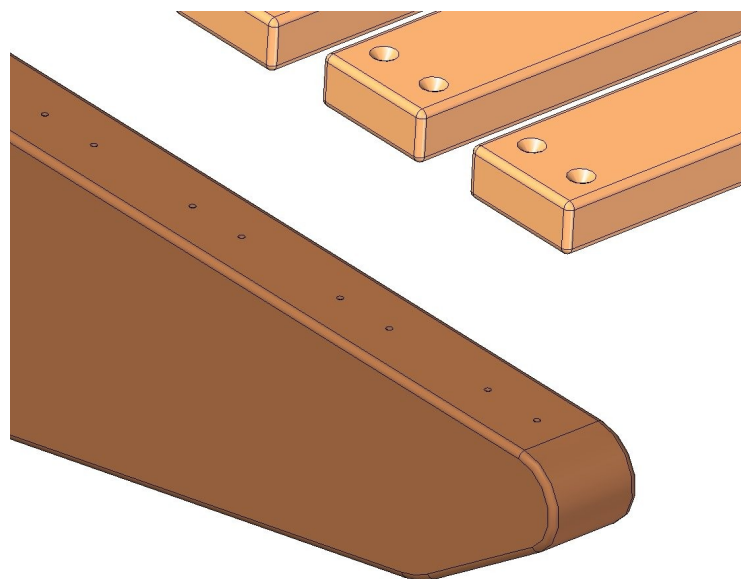
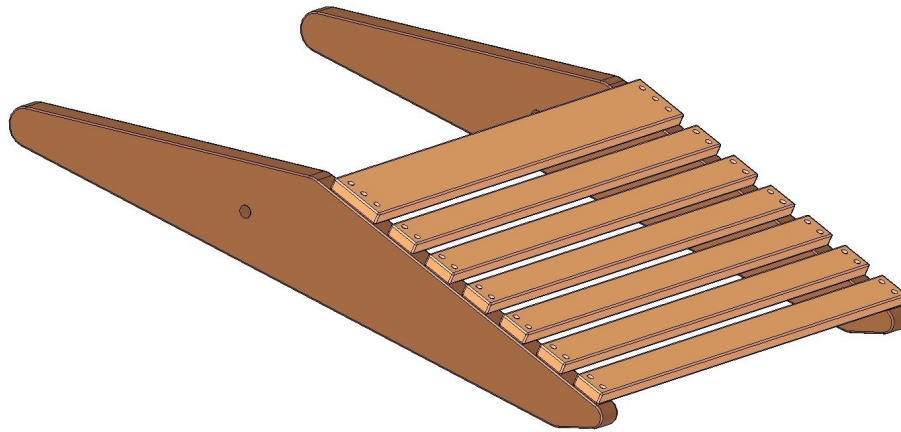
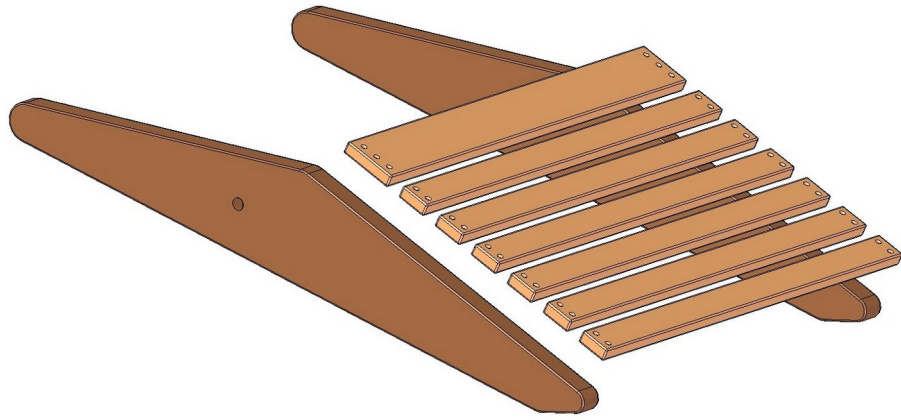
Standard Parts

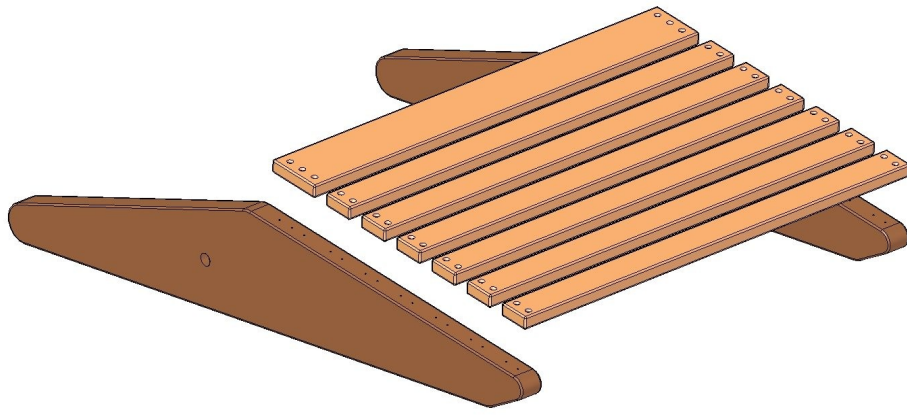
Standard Parts



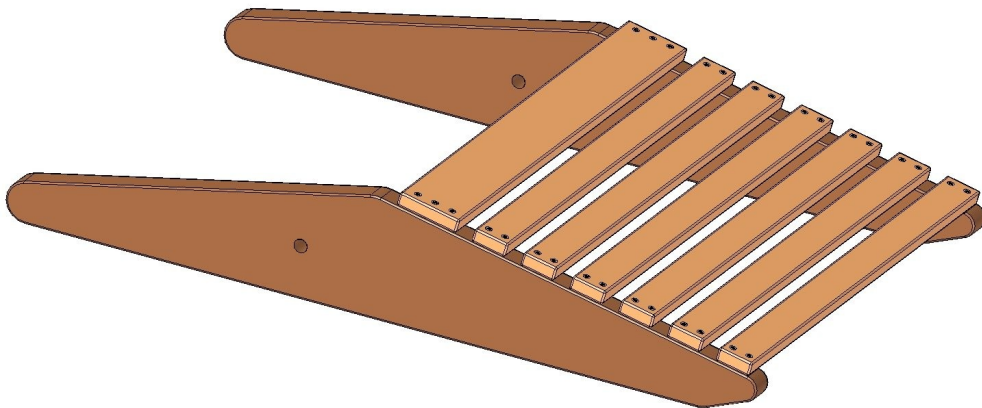
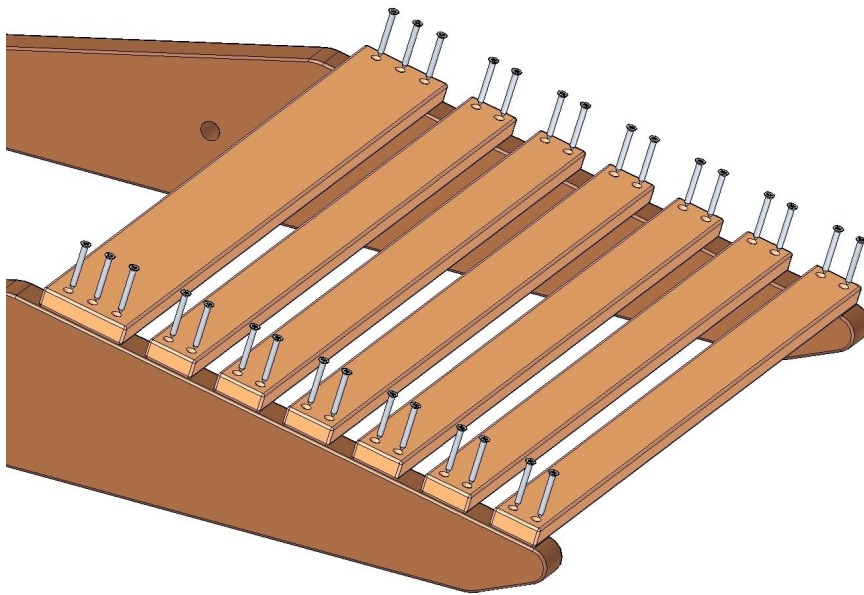
Assemblage images

1.

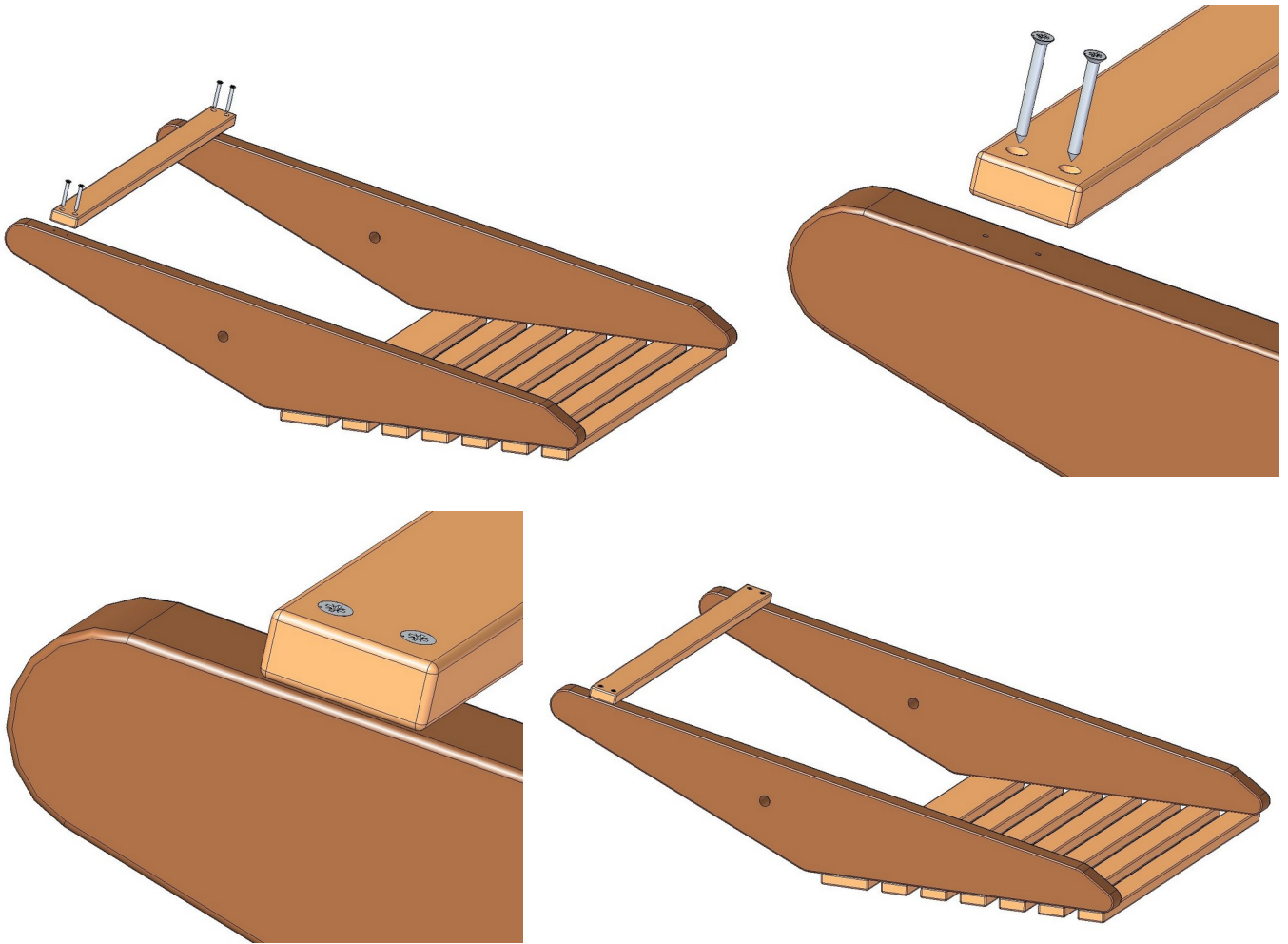




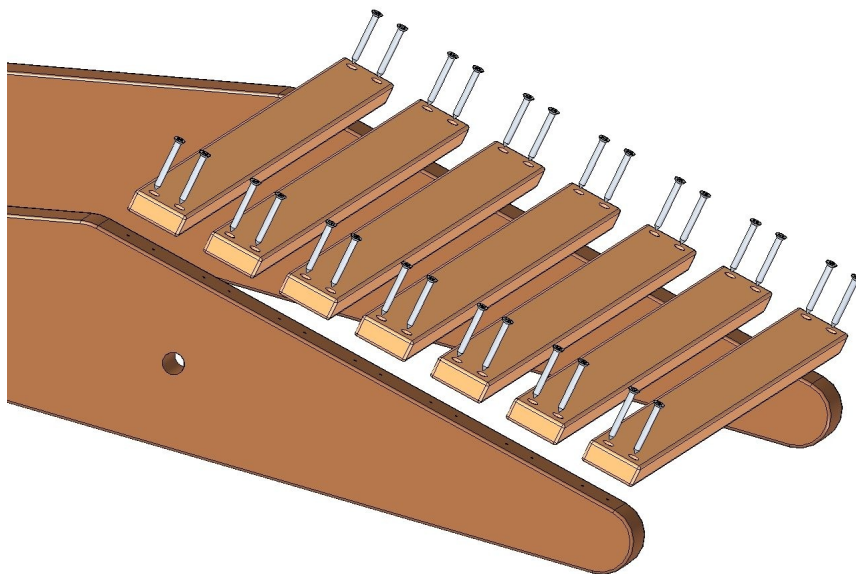
2.

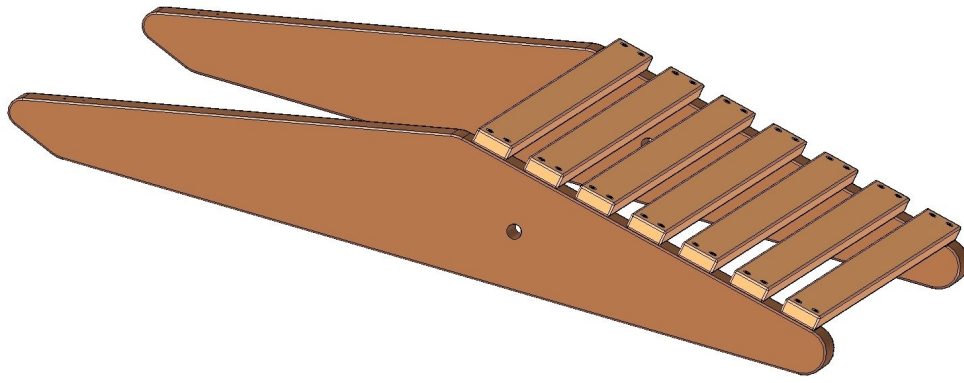


3.

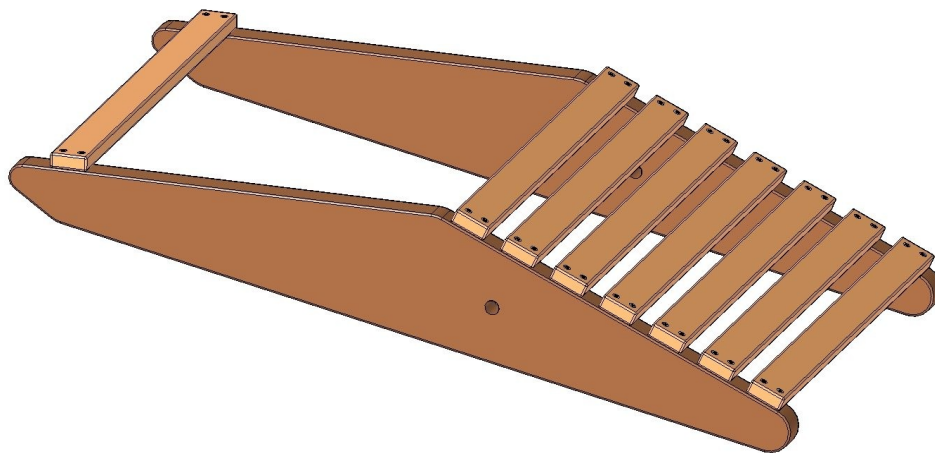
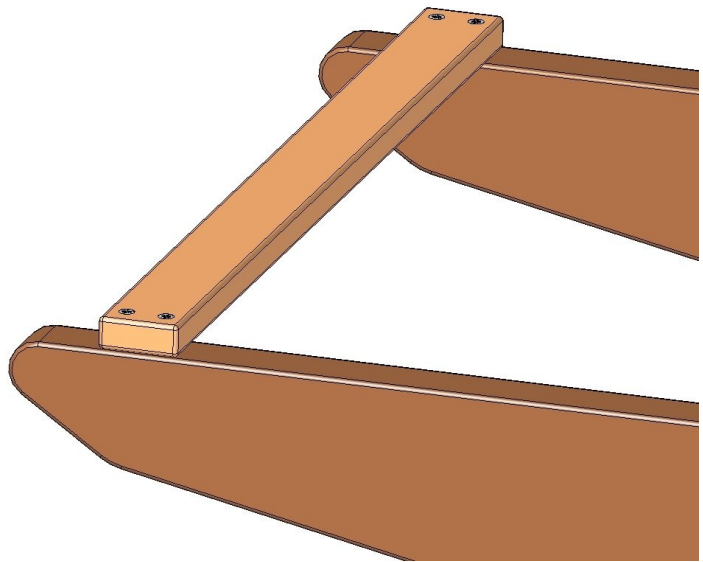
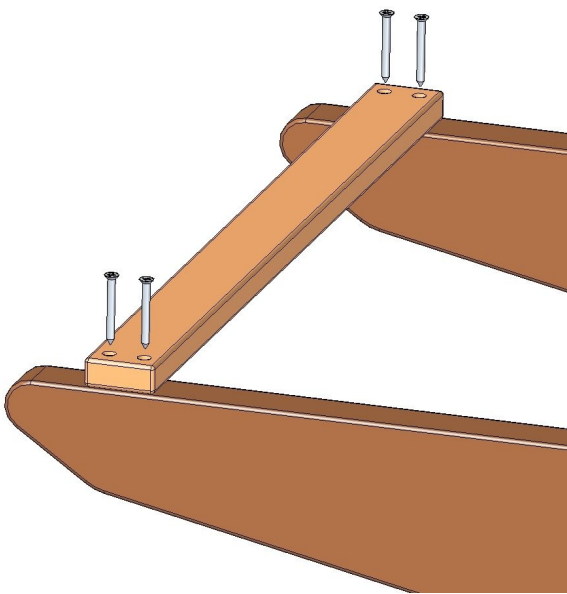


4.

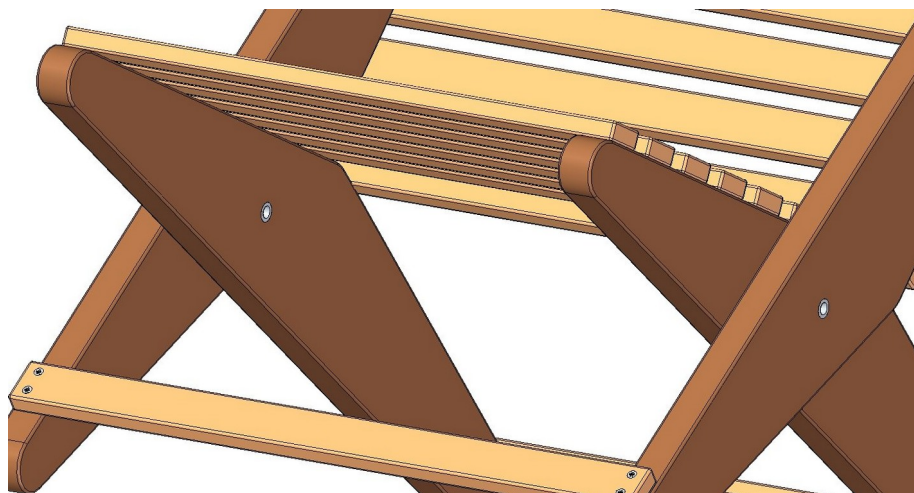
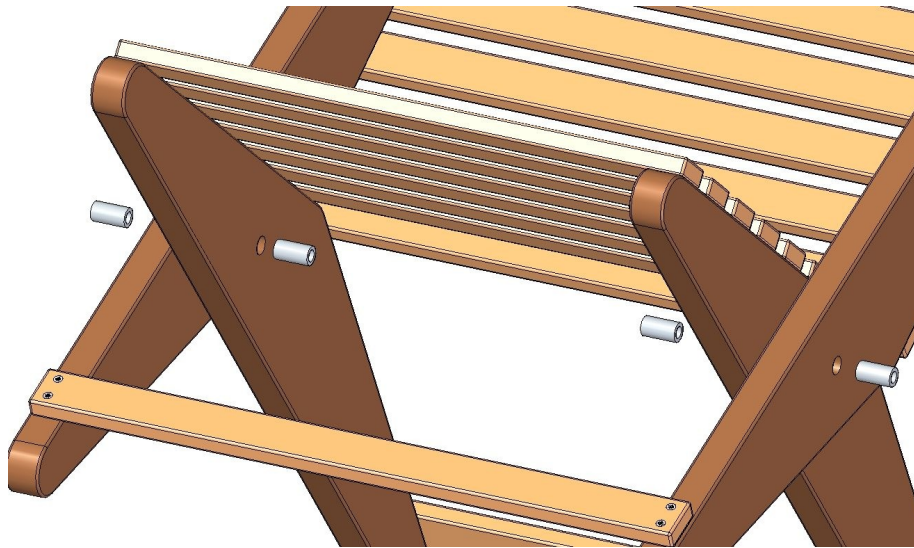
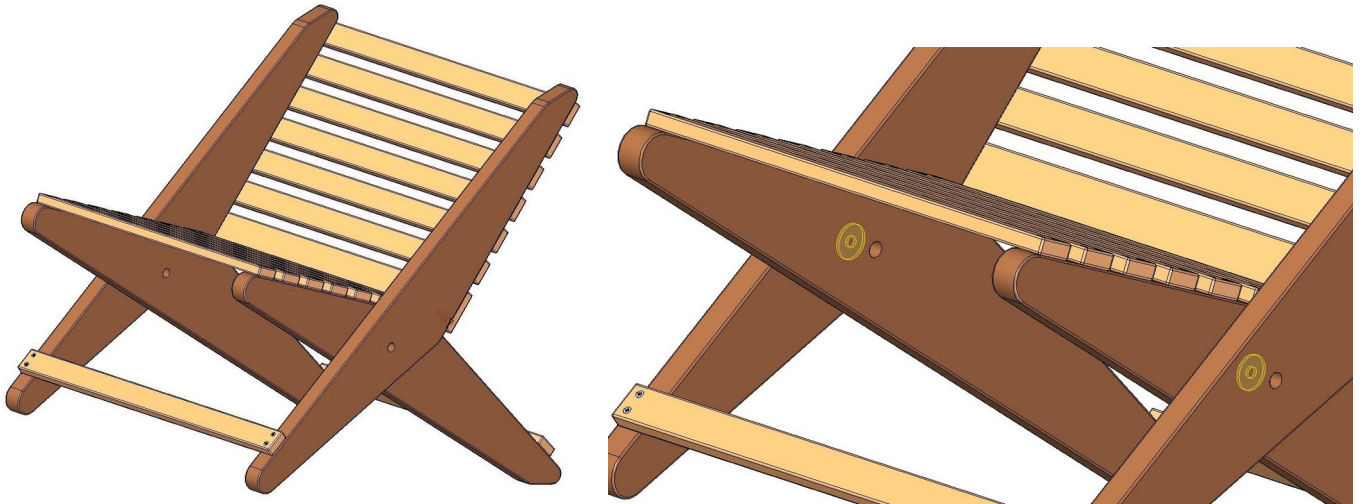




5.



6.



7.

