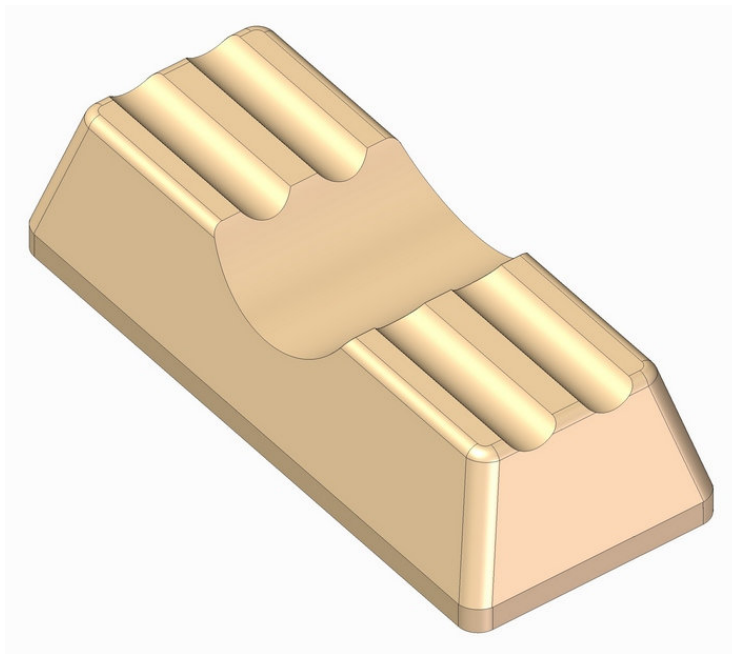


Pen and pencil rest plan

This project is intended to give the workman practice in using the gouge, both with and across the grain. The design in the drawing is very simple. The ambitious workman may do much to beautify the object by using the gouge to model the ends and sides in some manner to make the surfaces more pleasing than the plain, flat surfaces shown in the drawing. The stock is first planed square and to size. The lines locating the grooves are then placed as indicated in the working drawing. Suitable gouges are used to remove the waste wood. When cutting the crosswise groove the workman should remember the rule that no cut should be made with any edge tool all the way across a piece of wood, going crosswise to the grain. These cuts should be made half way across from each side to insure a clean cut job. When the grooves are cut as smoothly as possible with the gouge they may be sandpapered, the sandpaper being held wrapped snugly around a suitable piece of dowel. The edges of the block may next be modelled to suit the workman. It will be found better to do the cutting on the ends before the sides are touched. Sandpaper all the surfaces smooth, and apply a good finish. The stain should match the desk or table on which this will be used.



Elementary woodworking projects – Harold R. Wise (The manual arts press – Peoria, Illinois)

The measurements are given in millimeters, while the measurements given in inches are in brackets (1 inch = 25, 4 mm).

Pen and pencil rest plan – Assembly 2D drawing

