

Bench with storage area plan



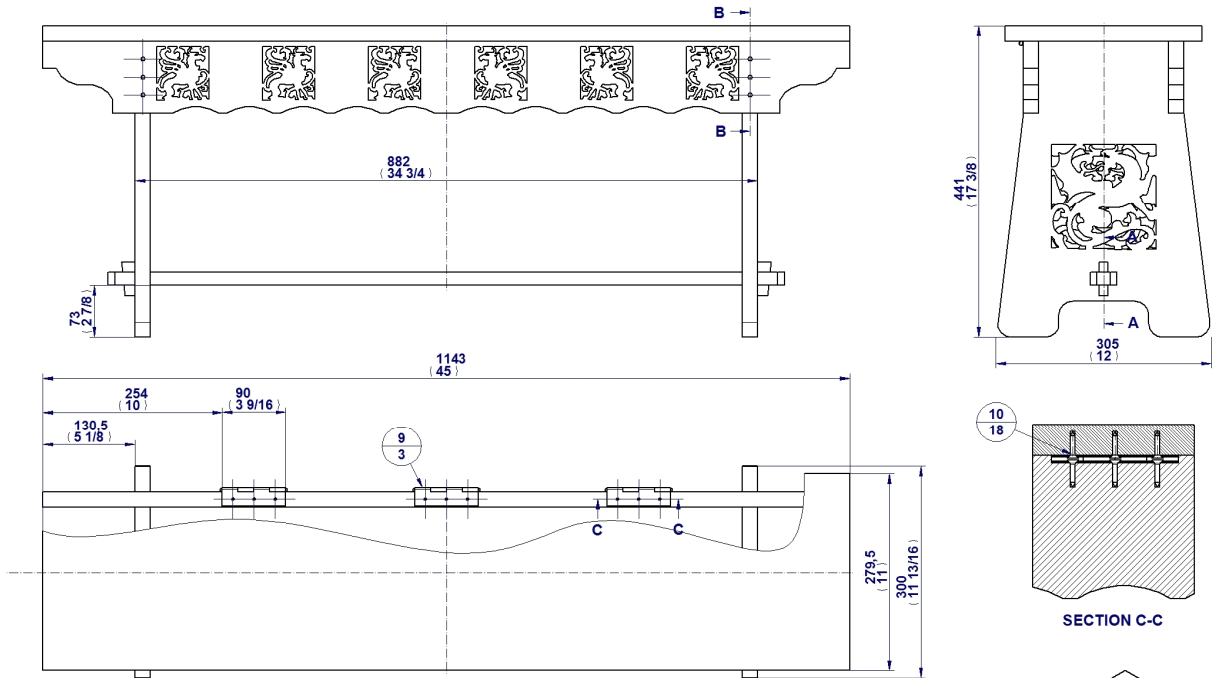
Bench with storage area underneath the seat - Durable, practical, decorated and simple in construction.

This wooden bench is a very useful piece of furniture in almost any room, especially in the entrance hall, before a window or in front of a shoe cabinet. All the material used in the making of this bench is 22mm (7/8in) thick, excepting the Stretcher (Part 5), which is 19mm (3/4)in thick. The bench can be made from any of the furniture woods and finished with paint, lacquer or enamel.

The measurements are given in millimeters, while the measurements given in inches are in brackets (1 inch = 25, 4 mm).

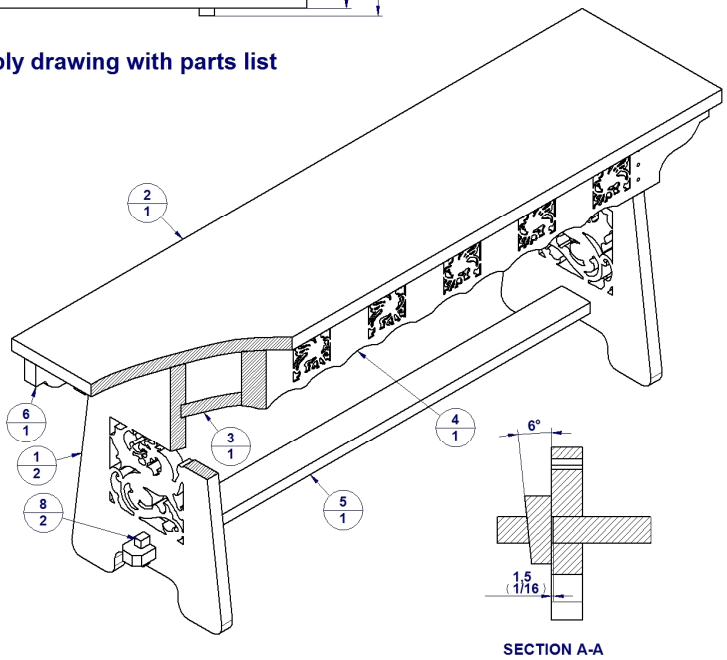
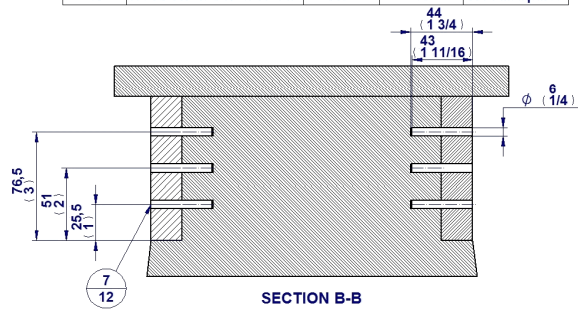
Dimensions in inches are approximate values obtained by converting dimensions in millimeters to inches as a fraction.

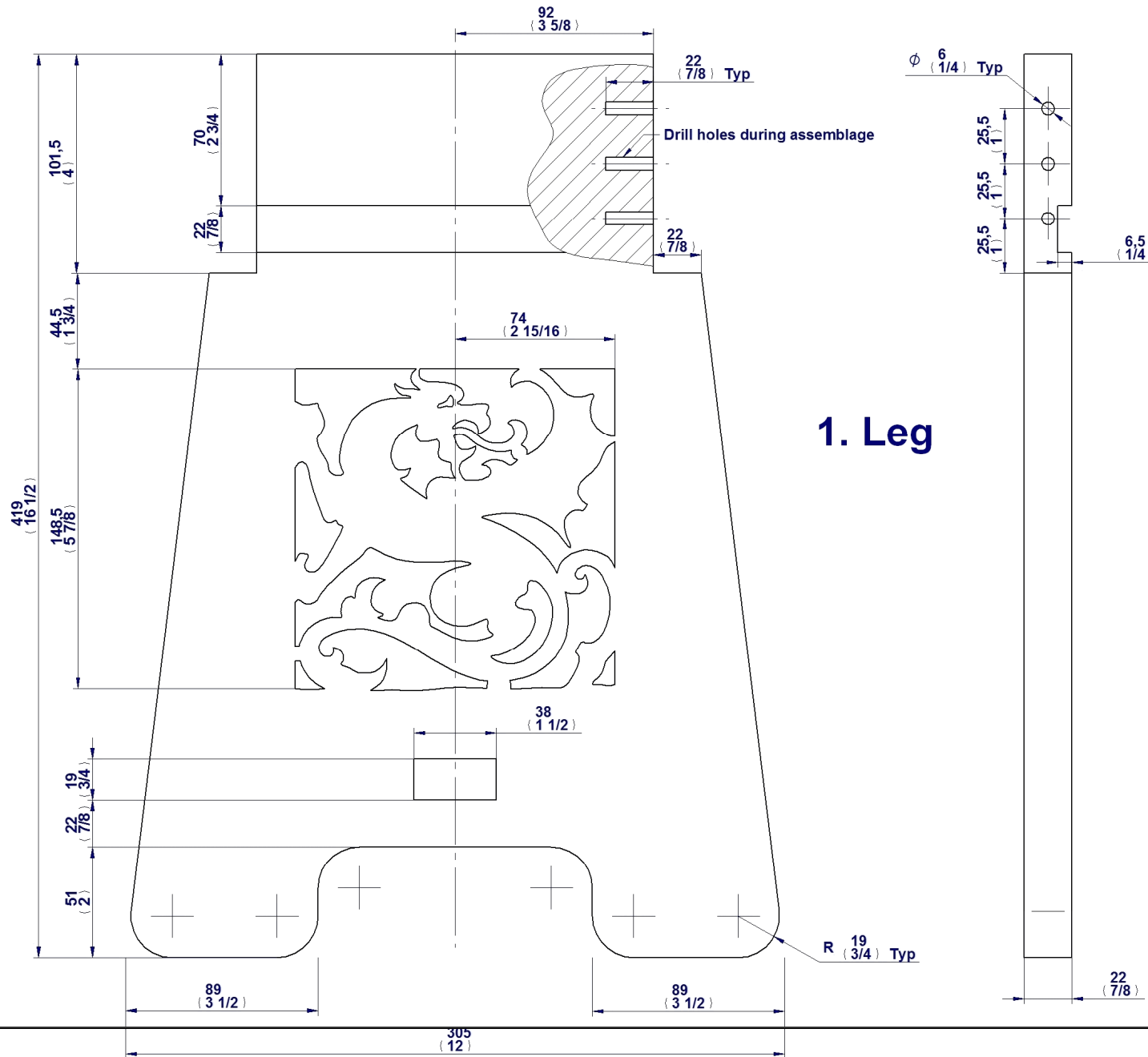
Bench with storage area- Assembly 2D drawing with parts list

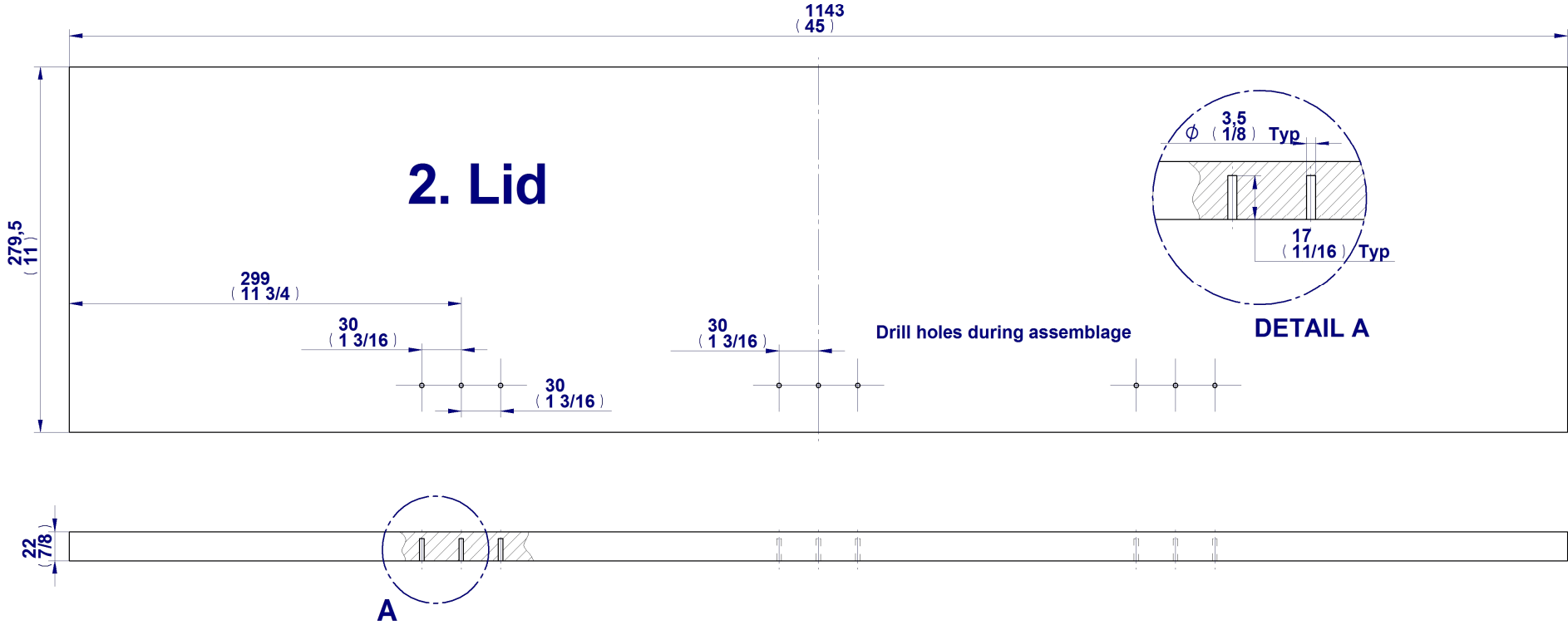


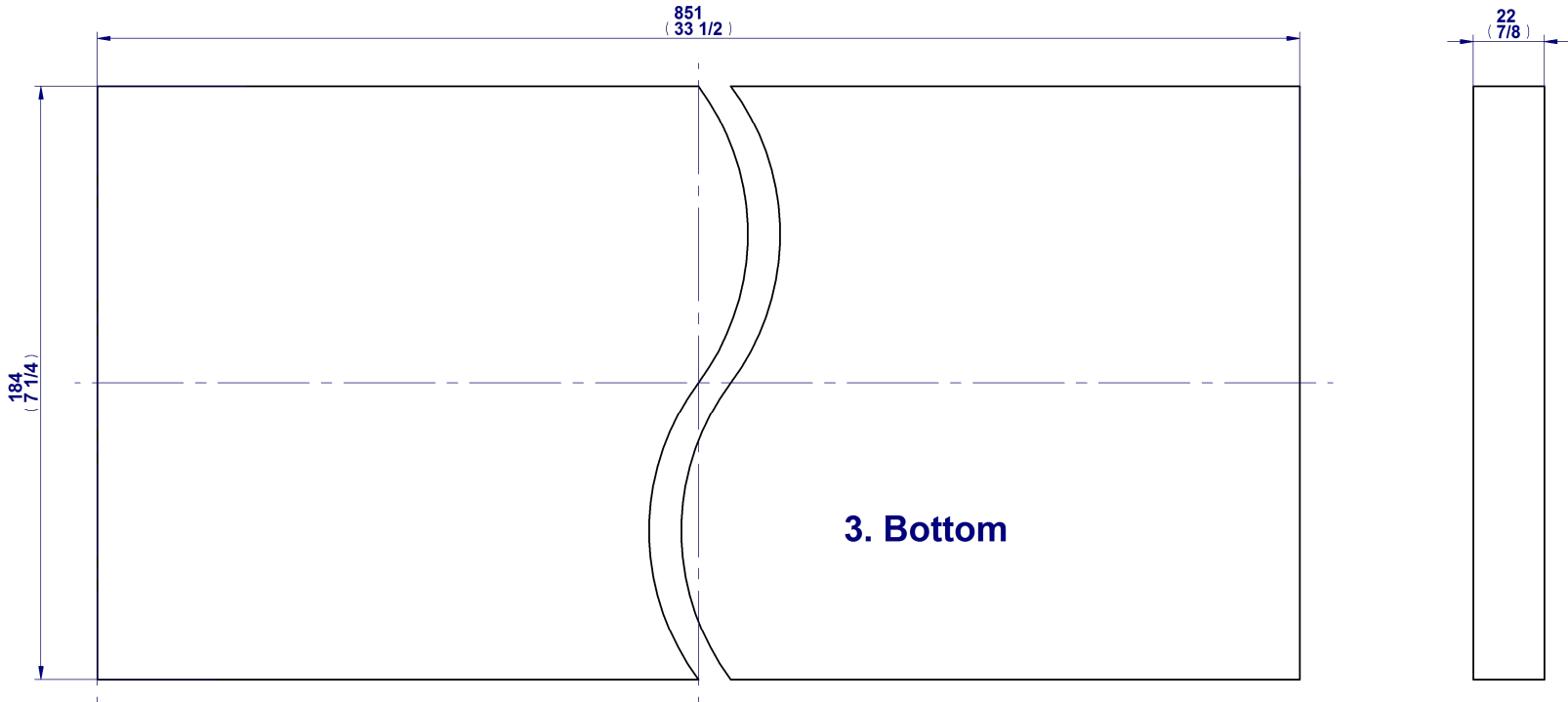
Bench with storage area - Assembly drawing with parts list
www.craftsmanspace.com

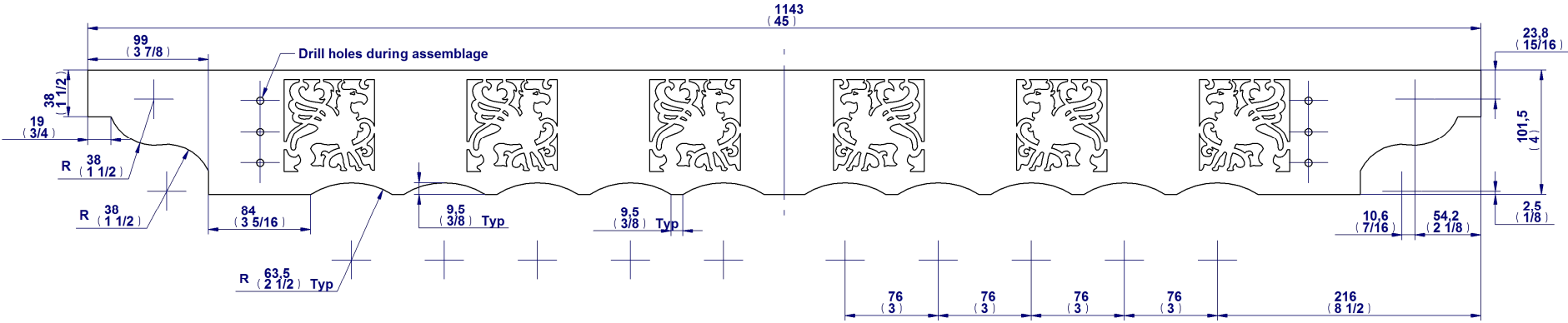
| Item Number | Title | Material | Quantity | Comments |
|-------------|------------------------|----------|----------|----------------|
| 1 | Leg | Wood | 2 | |
| 2 | Lid | Wood | 1 | |
| 3 | Bottom | Wood | 1 | |
| 4 | Rail | Wood | 1 | |
| 5 | Stretcher | Wood | 1 | |
| 6 | Back rail | Wood | 1 | |
| 7 | Dowel D6 x 43mm | Wood | 12 | |
| 8 | Wedge | Wood | 2 | |
| 9 | Hinge | Steel | 3 | Standard parts |
| 10 | Wood screw D3.5 x 19mm | Steel | 18 | Standard parts |



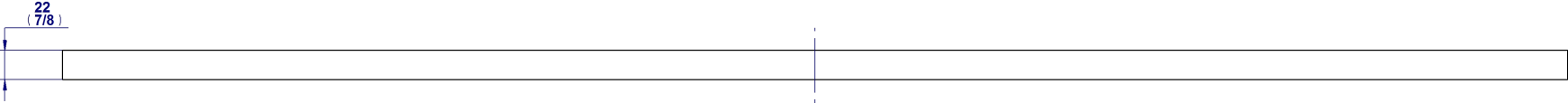


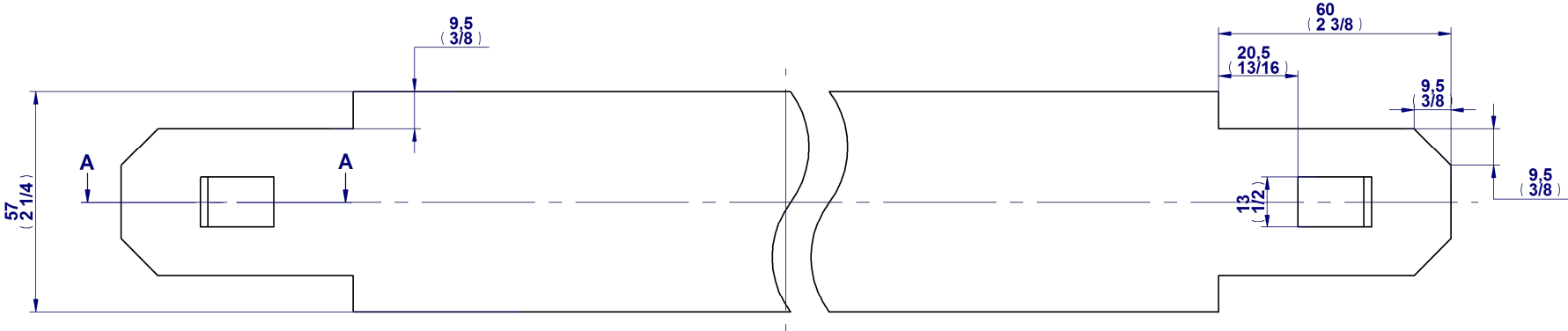




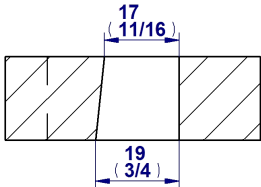


4. Rail

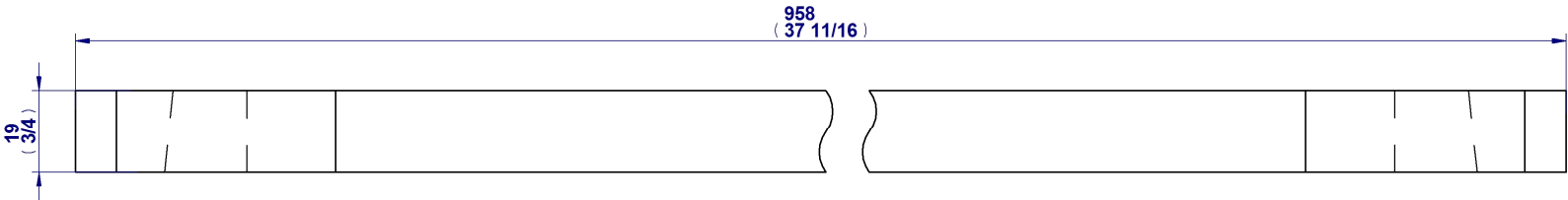


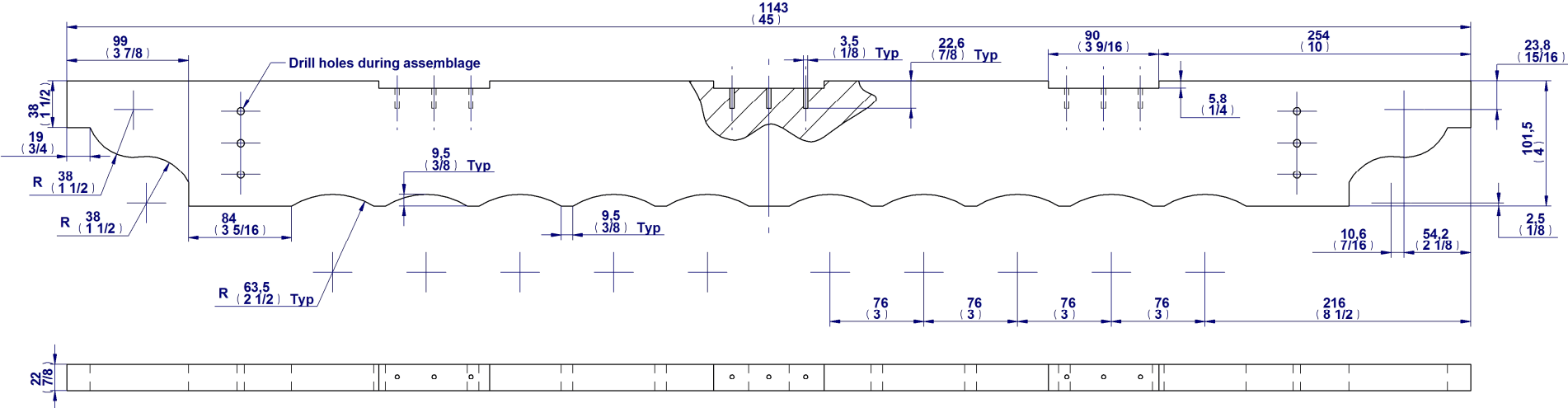


5. Stretcher

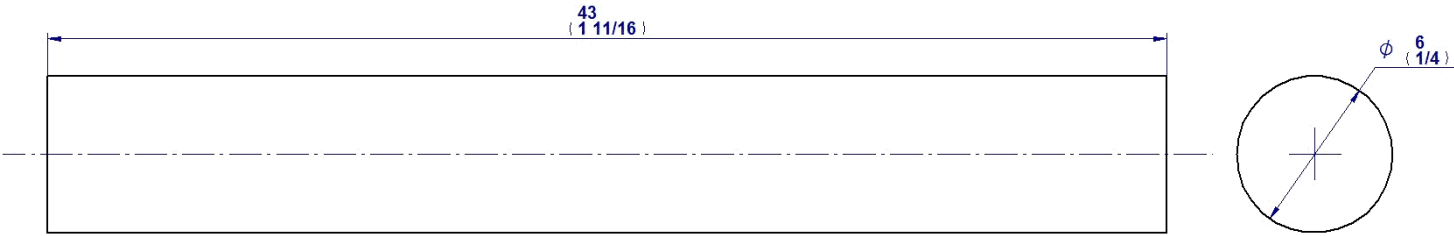


SECTION A-A

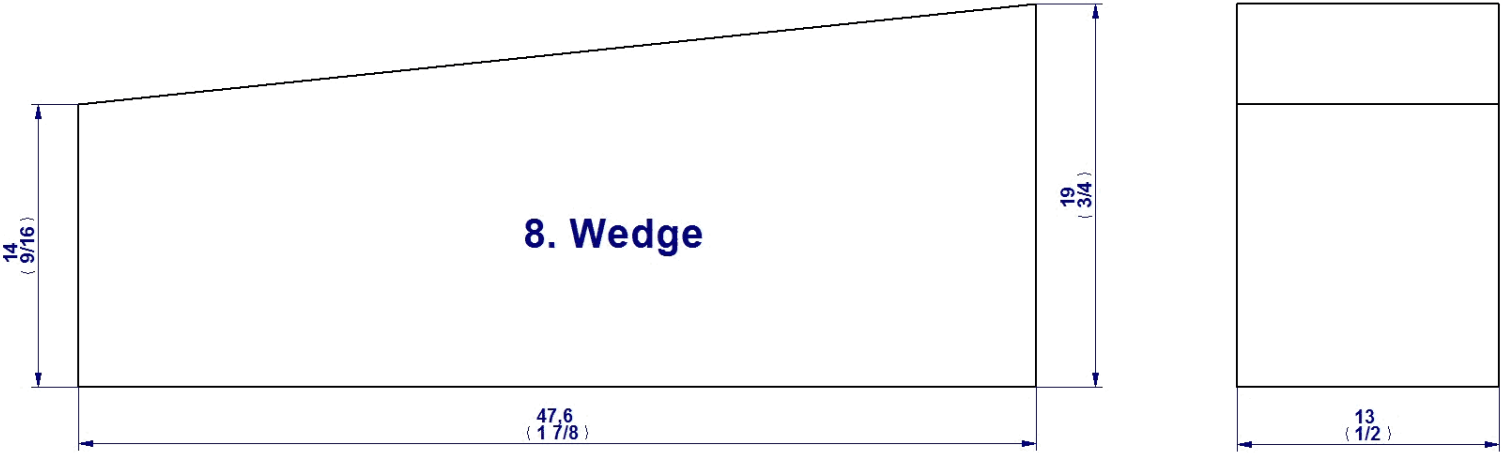




6. Back Rail



7. Dowel D6 x 43mm



8. Wedge

Standard parts

