

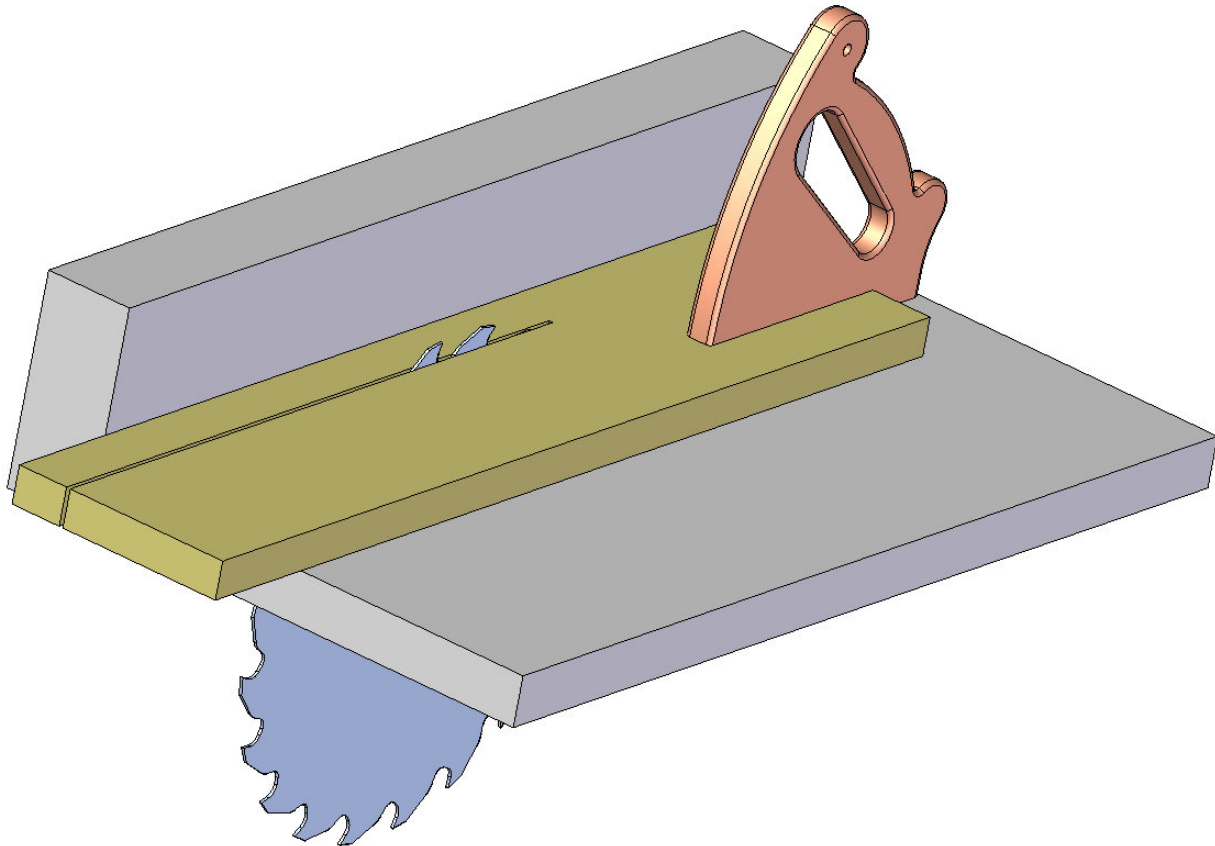
Push stick plan - Workshop safety device

Push stick is a safety device that helps you to control movement of working piece when operate on some of the power machines, especially when working on tablesaw, jointer, router table or a bandsaw. Push stick keeps your hands away from machine cutting zone, it also helps to produce a smoother cuts. It is especially useful for feeding narrow stocks across the table of a woodworking machine.

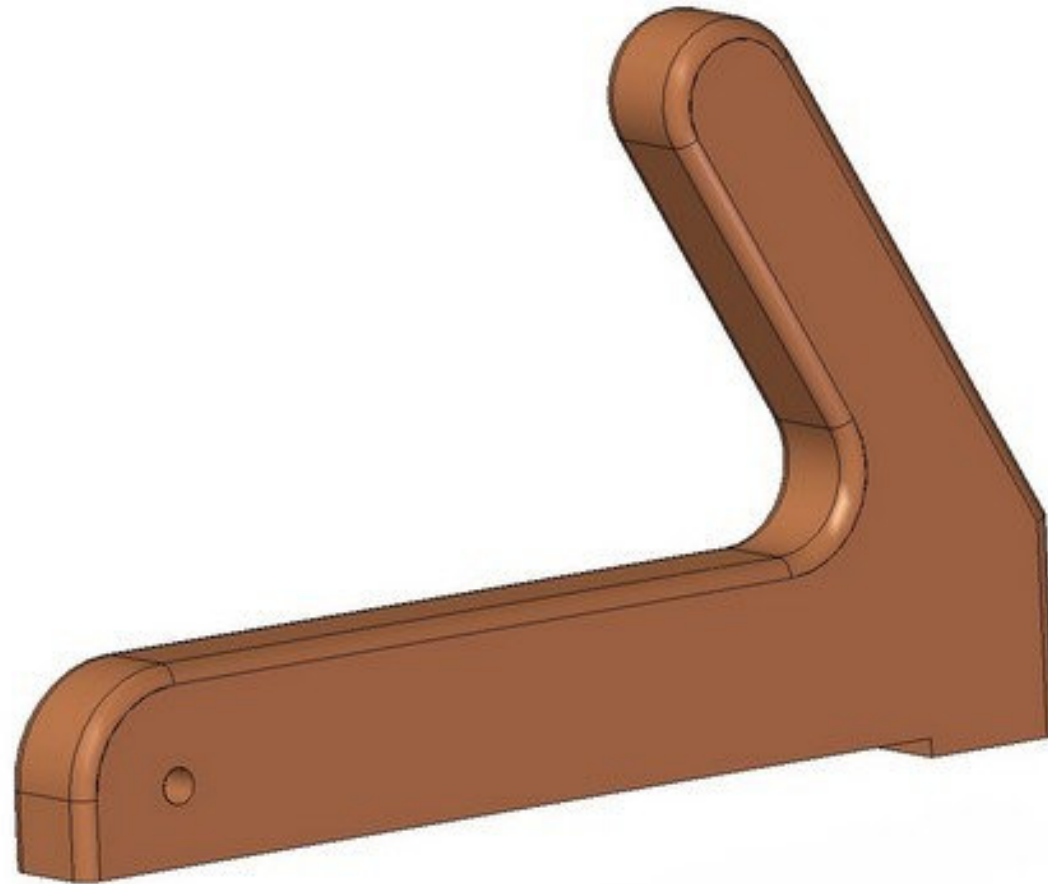
Safety precaution while working around machine blades can be increased, if you use a feather boards and clamps together with the push stick.

Feel free to adjust the push stick dimensions given in our plan to suit the best your needs. You can build it from any kind of straight and clean wood, even from a scrap wood such as piece of plywood.

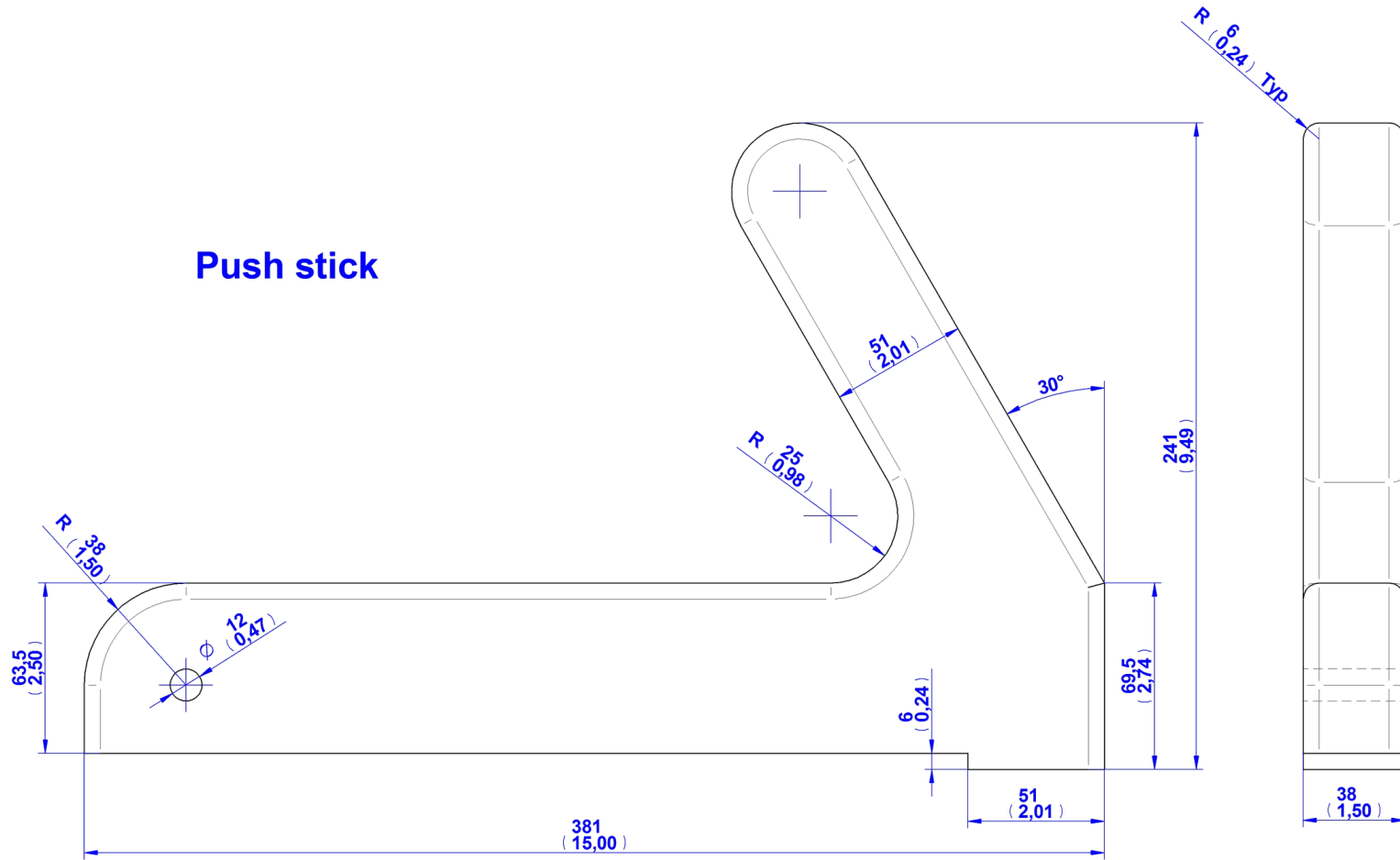
Measurements: millimeters and inches (in brackets).



Push stick 1



Push stick

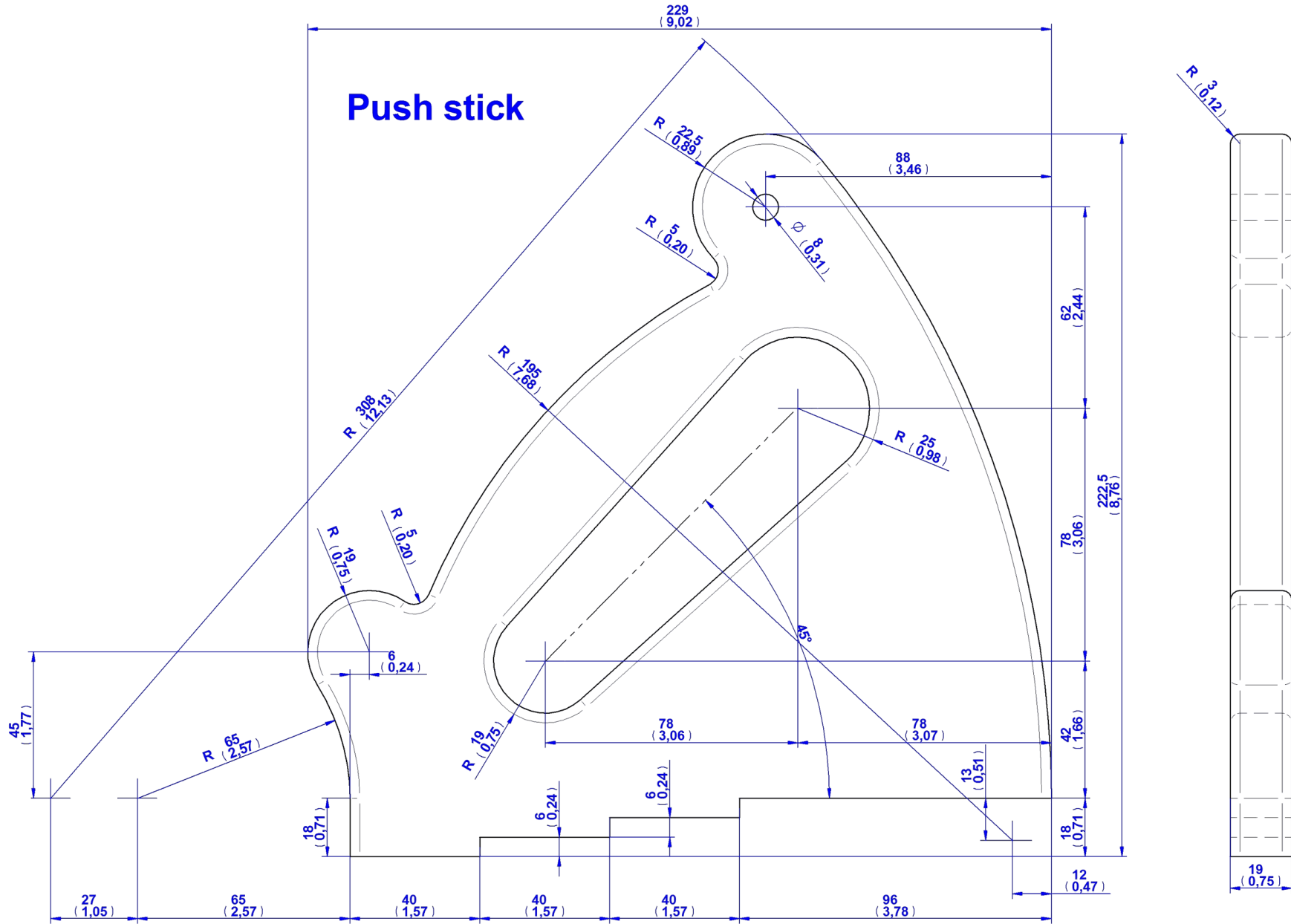


Push stick 2

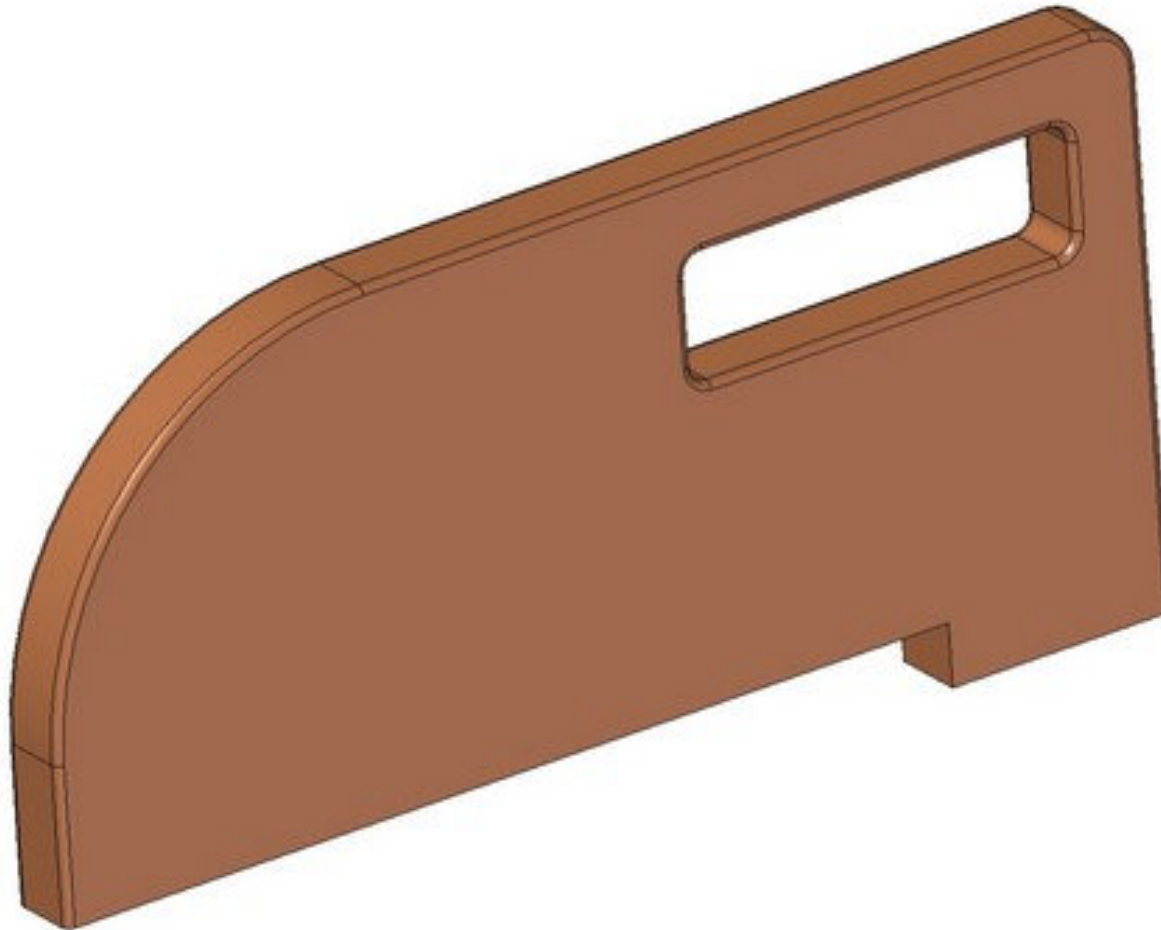


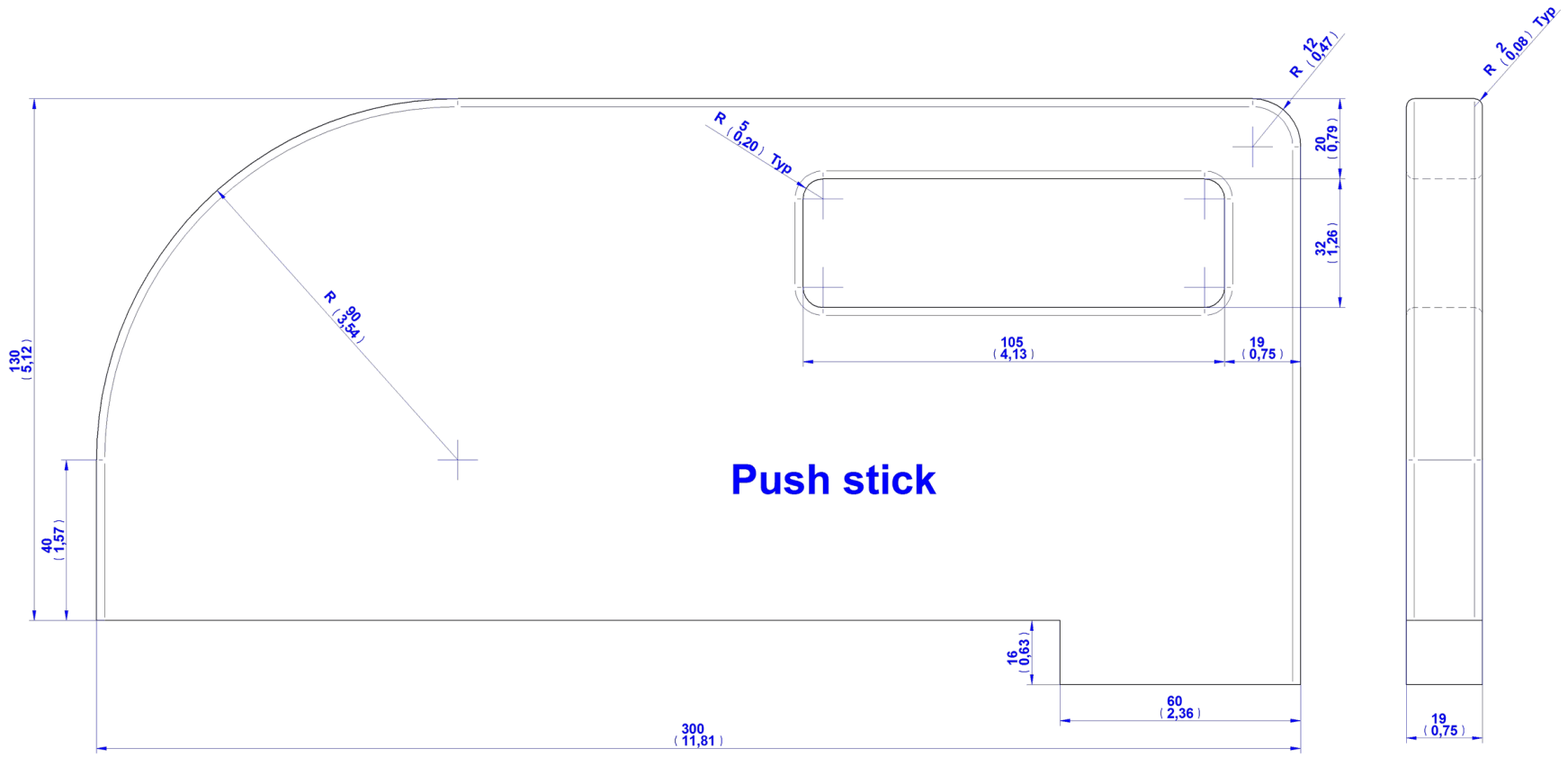
Push stick 3





Push stick 4





Push stick 5

