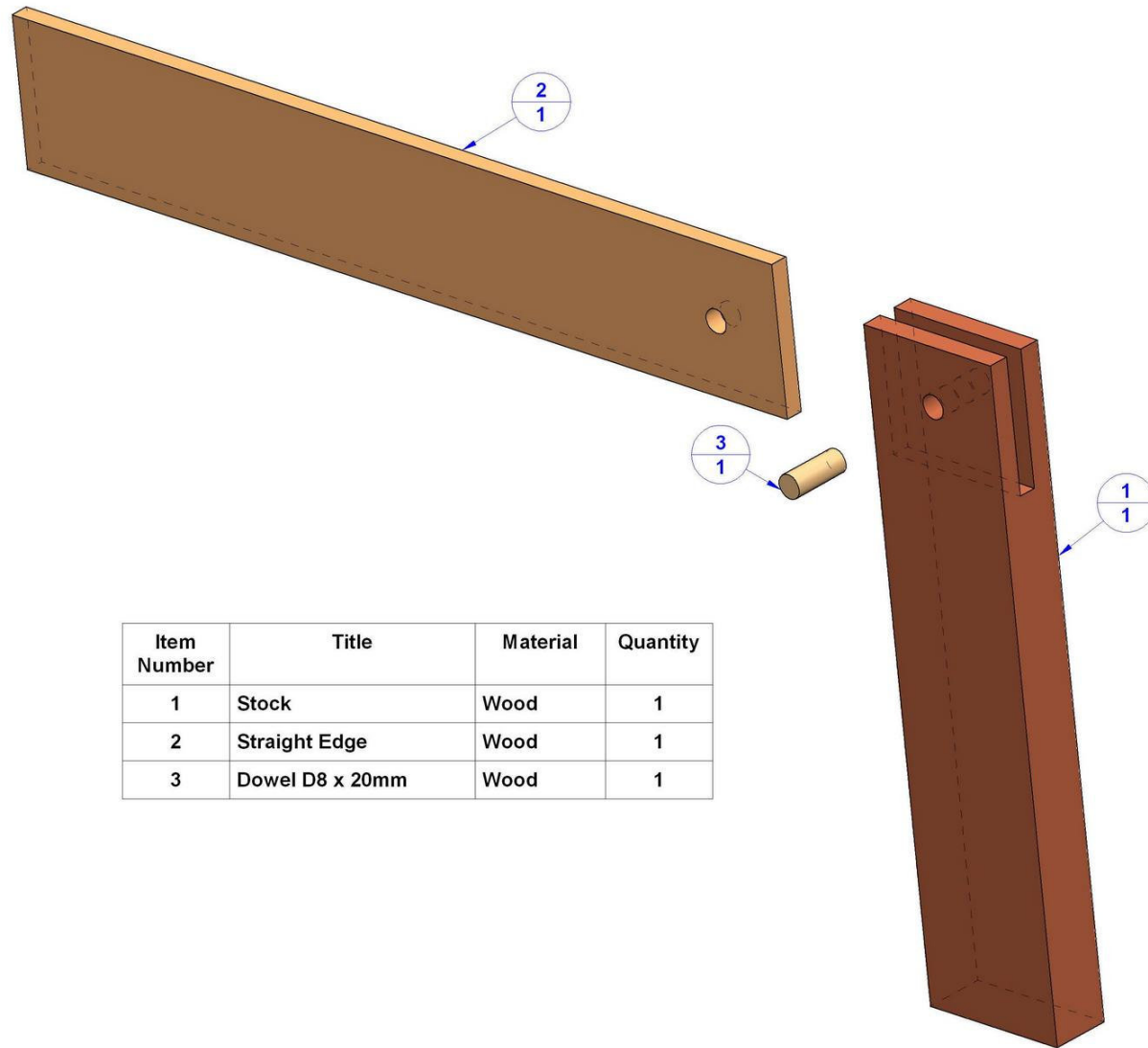


Try square

Try squares made of wood are very practical pieces of equipment, and are quick and easy to make. They can be made to any size up to a metre in length. Use the dimension given here only as a guide. When making this tool it is most important that the straight edge and the stock are glued up perfectly square, otherwise all the work done with it will be inaccurate.

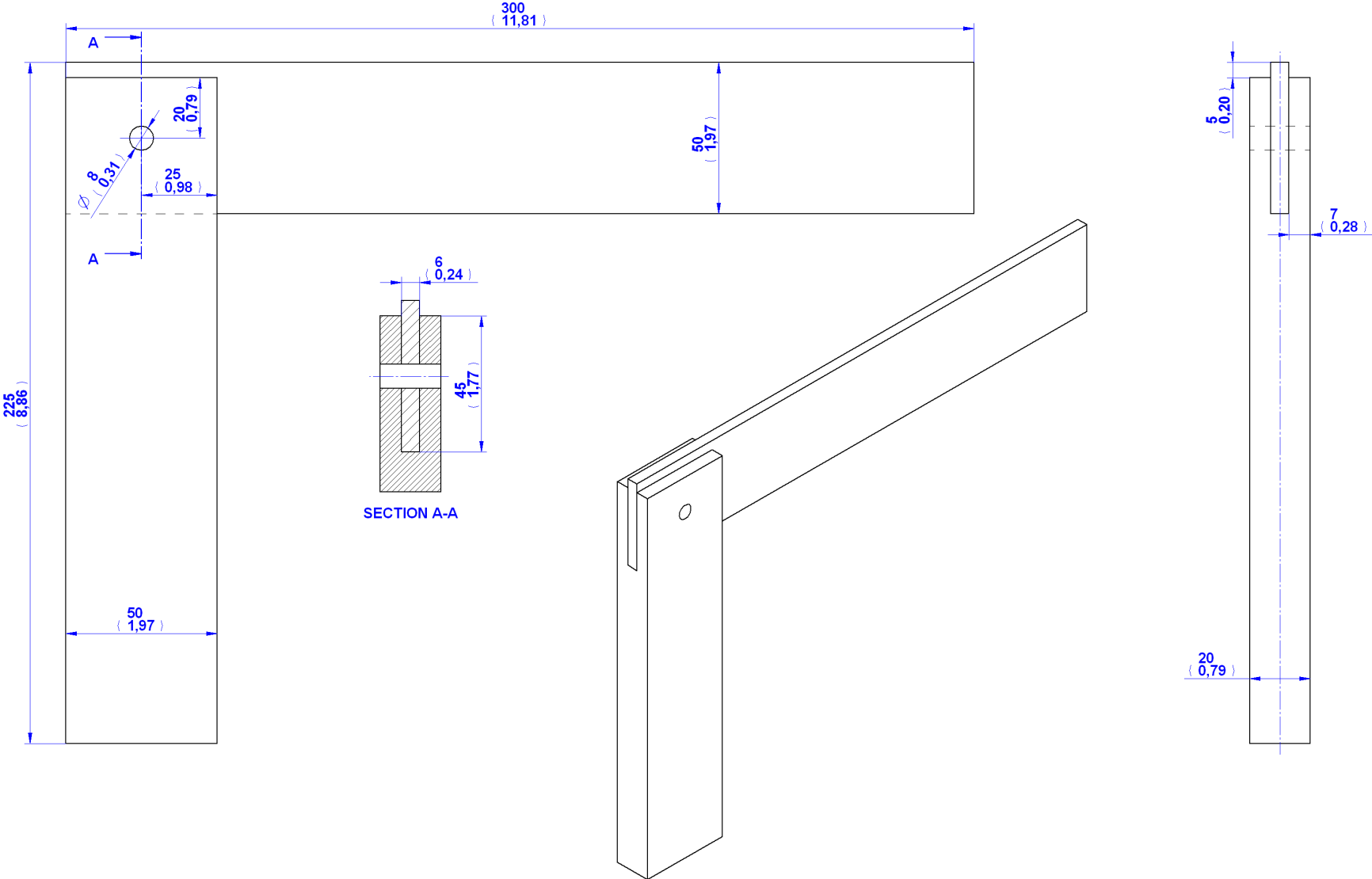


Parts list

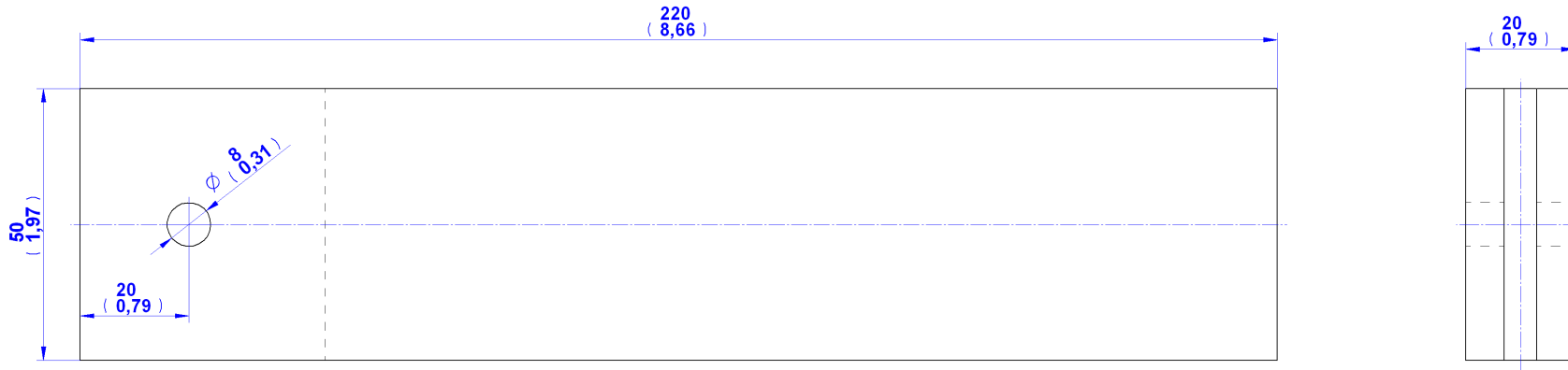


Item Number	Title	Material	Quantity
1	Stock	Wood	1
2	Straight Edge	Wood	1
3	Dowel D8 x 20mm	Wood	1

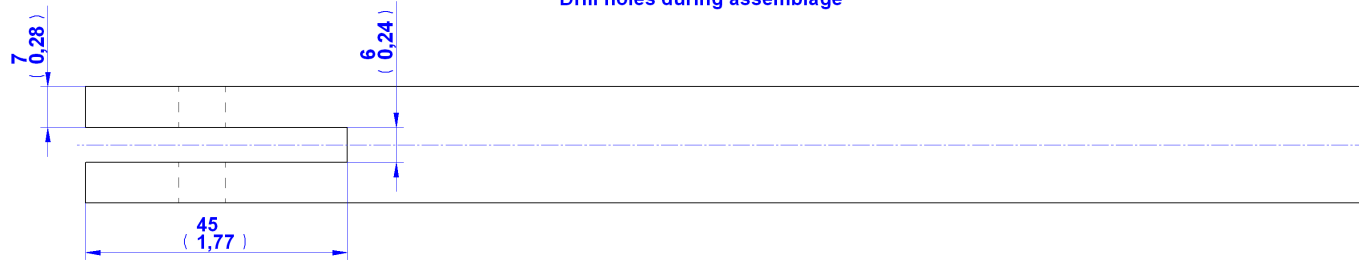
Assembly drawing



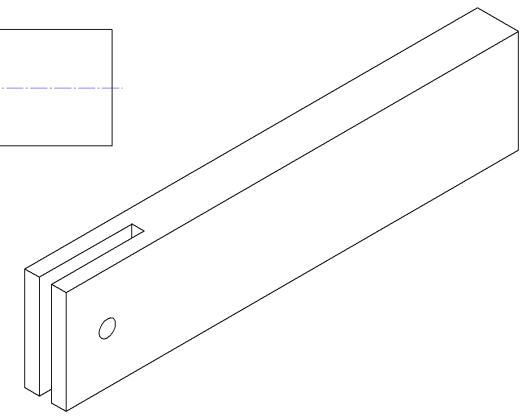
1. Stock



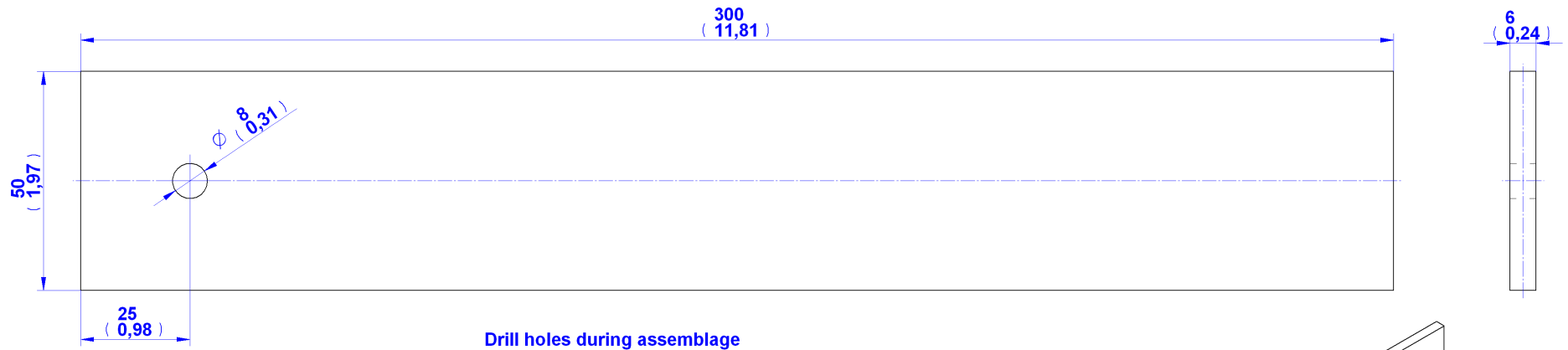
Drill holes during assemblage



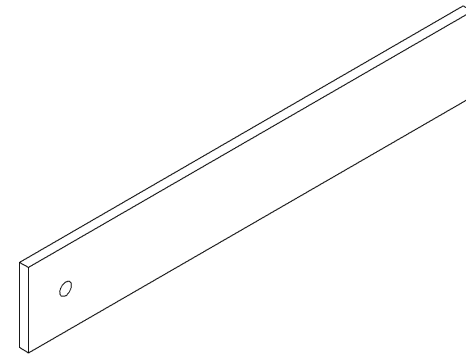
1. Stock



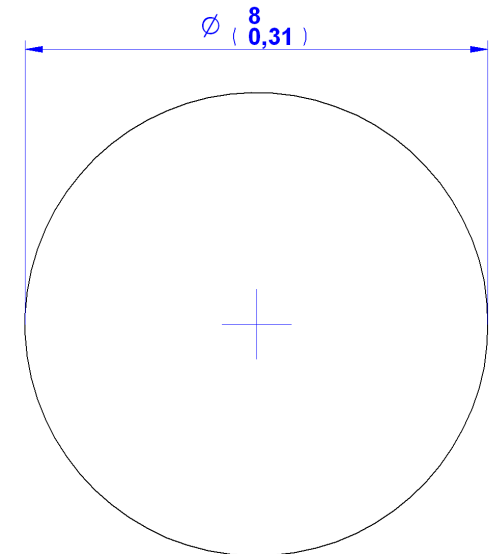
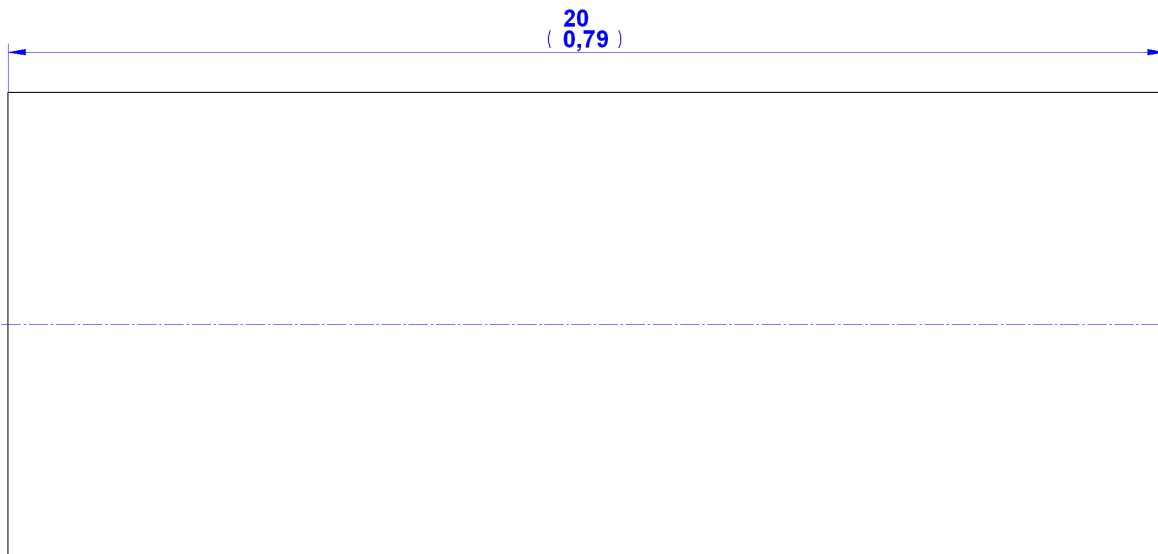
2. Straight Edge



2. Straight Edge



3. Dowel



3. Dowel D8 x 20mm

Assemblage instructions

Glue the straight edge into the stock and, before the glue dries, make sure the straight edge and stock are square. Leave the assembly to dry. When the glue is dry drill a D8mm hole in the centre of the joint. Drive in a D8mm dowel. Smooth up the ends of the dowel.

