

## Standing press plan

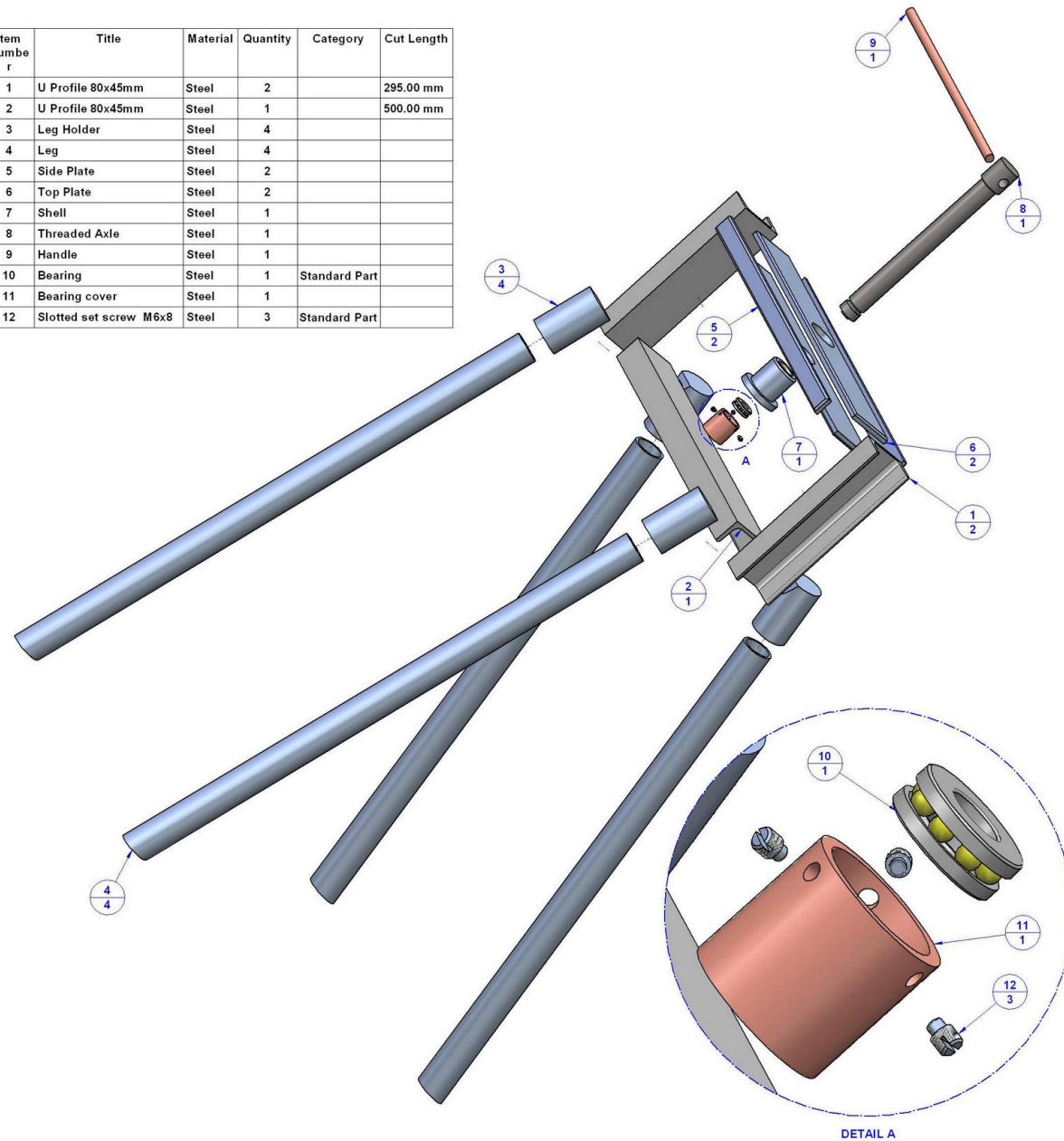
With this plan you can make a very simple standing press. The plan was made on the basis of a press seen in a workshop. What we felt mostly inspired by was its simplicity, so we decided to offer you a quality plan and encourage you to embark on this project. This is a press made by workshop workers and used as a universal press for various purposes. If you look a little closer, it is basically a standing screw press.



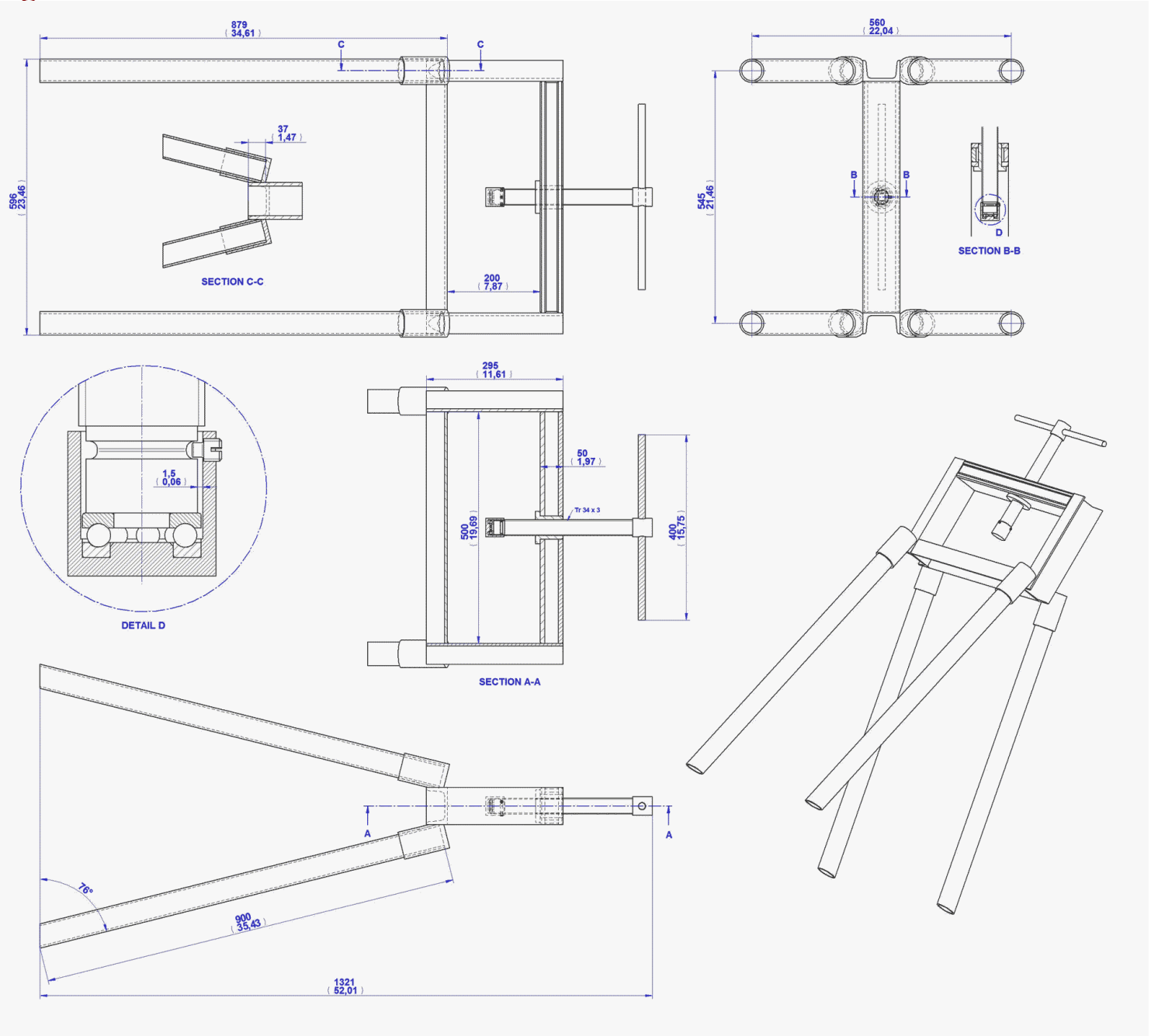
The press is made from metal tubes and profiles of different cross-sections that can be bought at the stores. You don't have to use the same type of tubes and profiles as recommended in our plan, first check if you have some remnants in the workshop and try using them. As you can see in the picture, the construction is very simple, you can make the press in a day, and if there is no heightened need for a better quality press, this one will surely satisfy amateur needs. If you have a heavy work table in the workshop and plenty of space, you can make it without legs and fasten it directly to the table. The drawings in the plan contain all the dimensions and information necessary to make this press, and if you have some special needs, try to customize them.

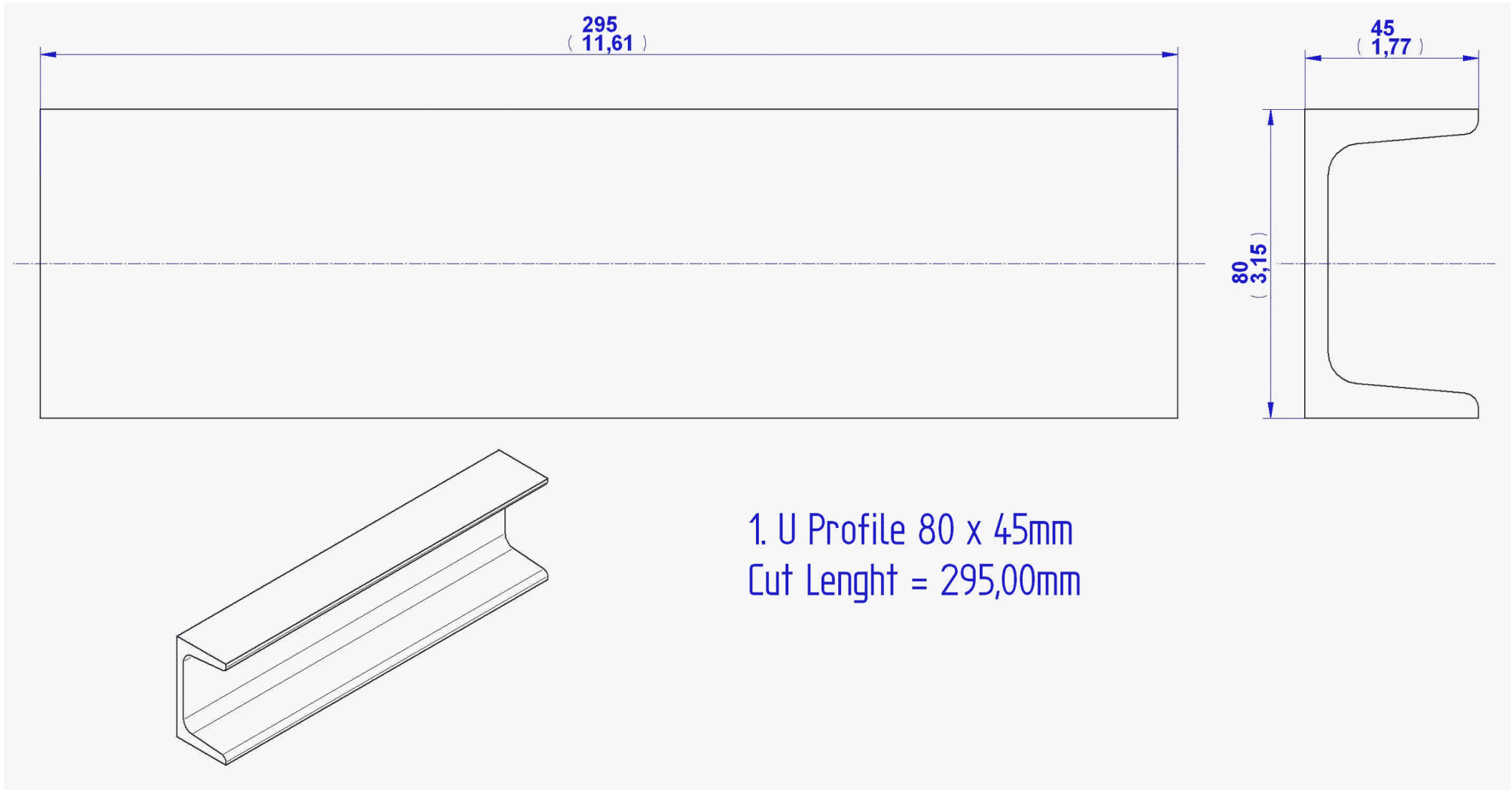
# Parts List

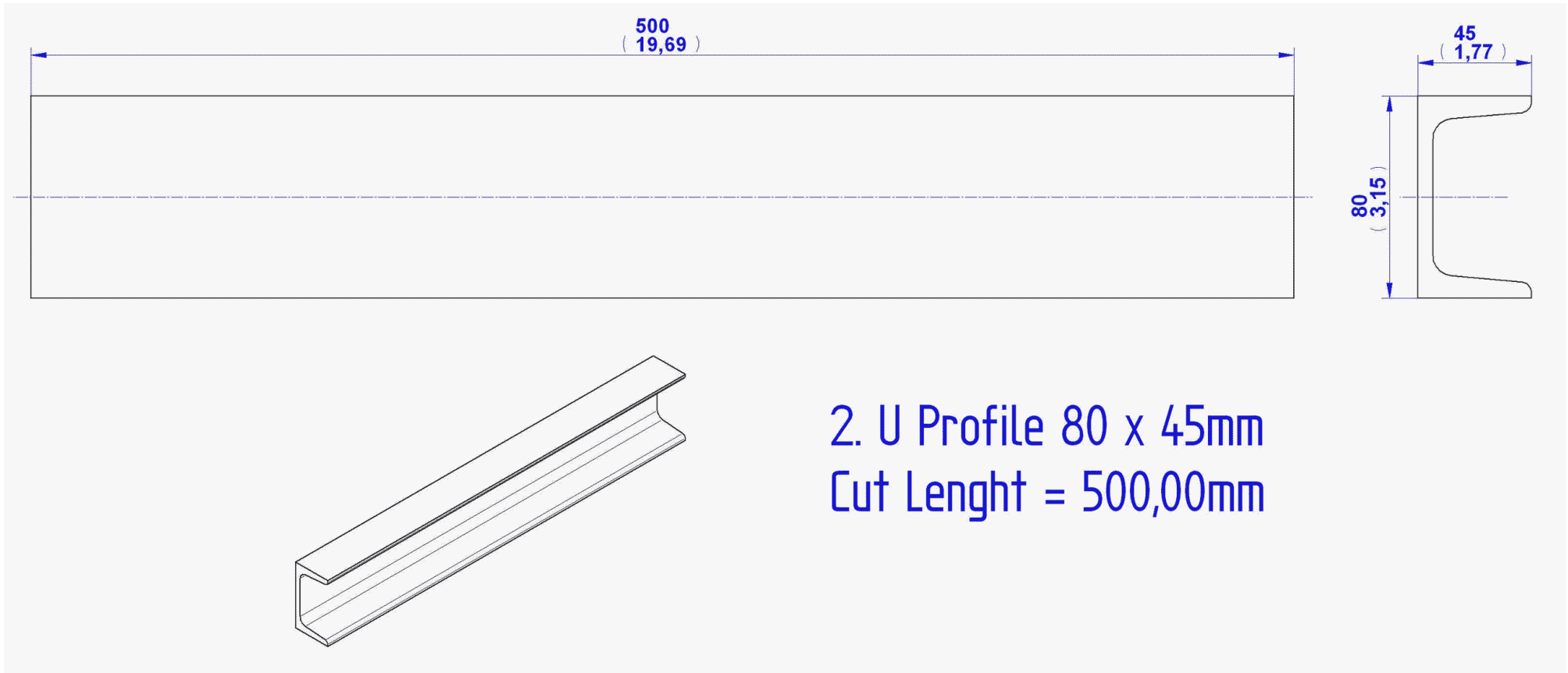
Item Number	Title	Material	Quantity	Category	Cut Length
1	U Profile 80x45mm	Steel	2		295.00 mm
2	U Profile 80x45mm	Steel	1		500.00 mm
3	Leg Holder	Steel	4		
4	Leg	Steel	4		
5	Side Plate	Steel	2		
6	Top Plate	Steel	2		
7	Shell	Steel	1		
8	Threaded Axle	Steel	1		
9	Handle	Steel	1		
10	Bearing	Steel	1	Standard Part	
11	Bearing cover	Steel	1		
12	Slotted set screw M6x8	Steel	3	Standard Part	

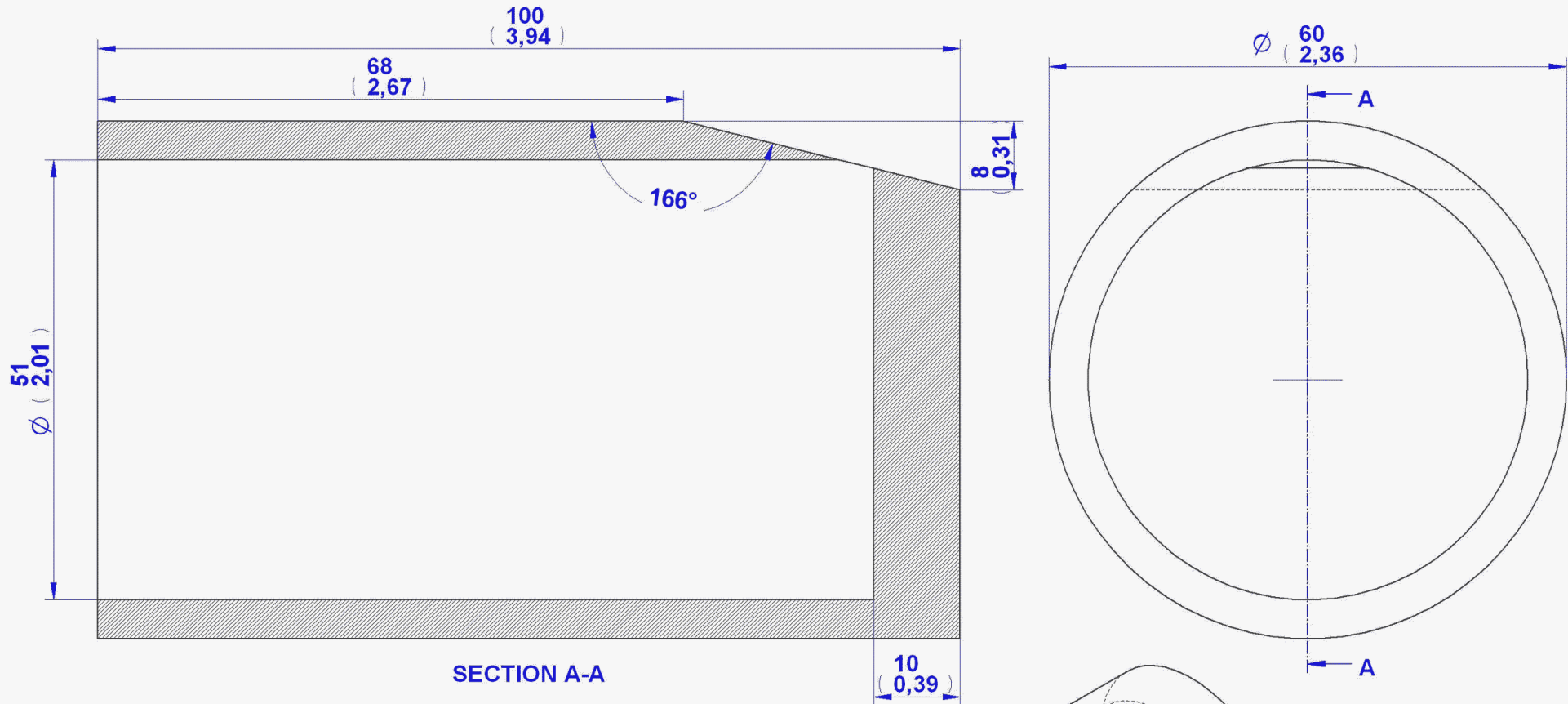


# Assembly Drawing

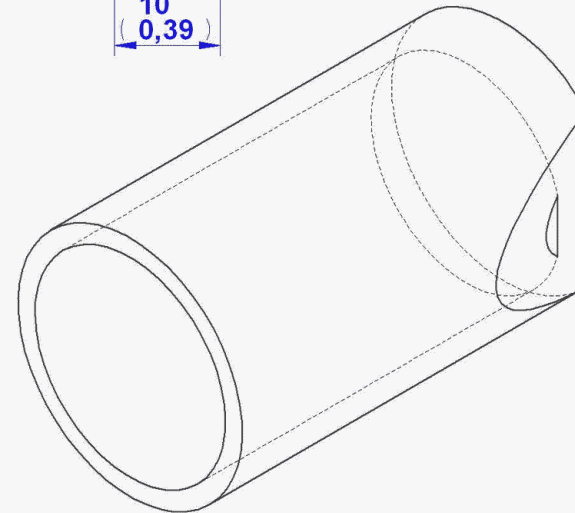


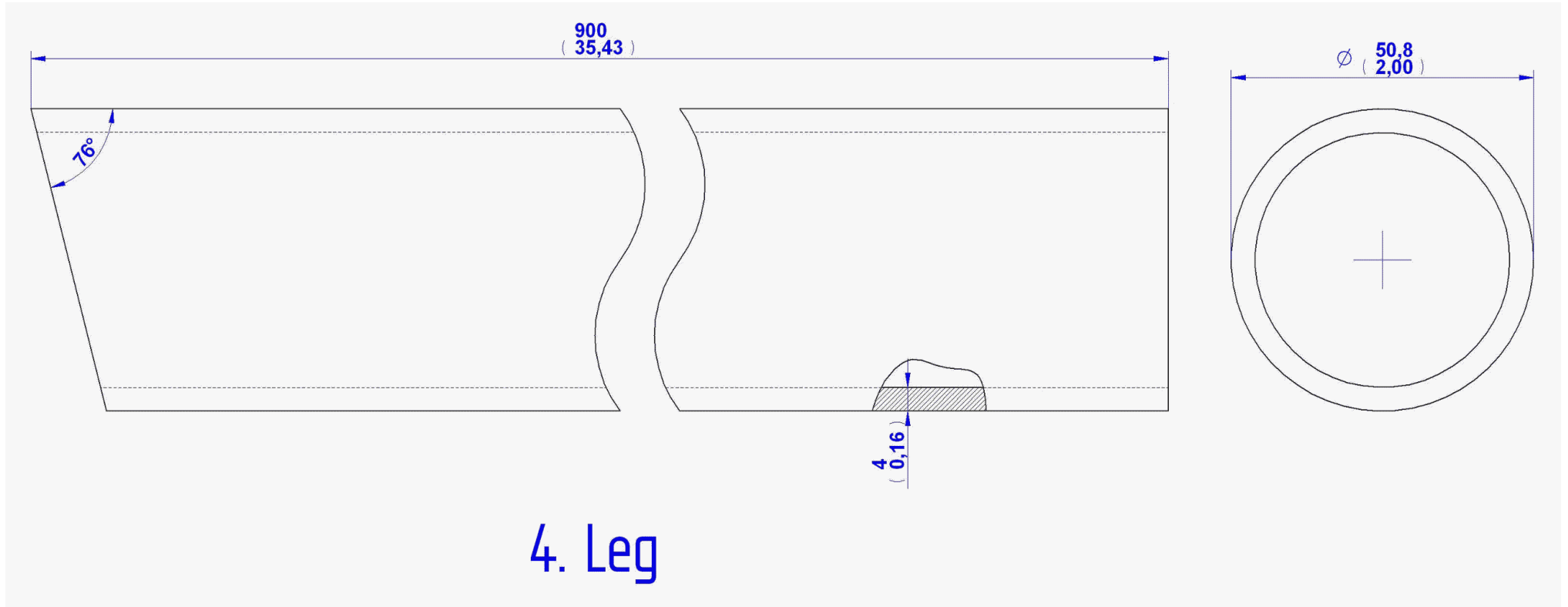


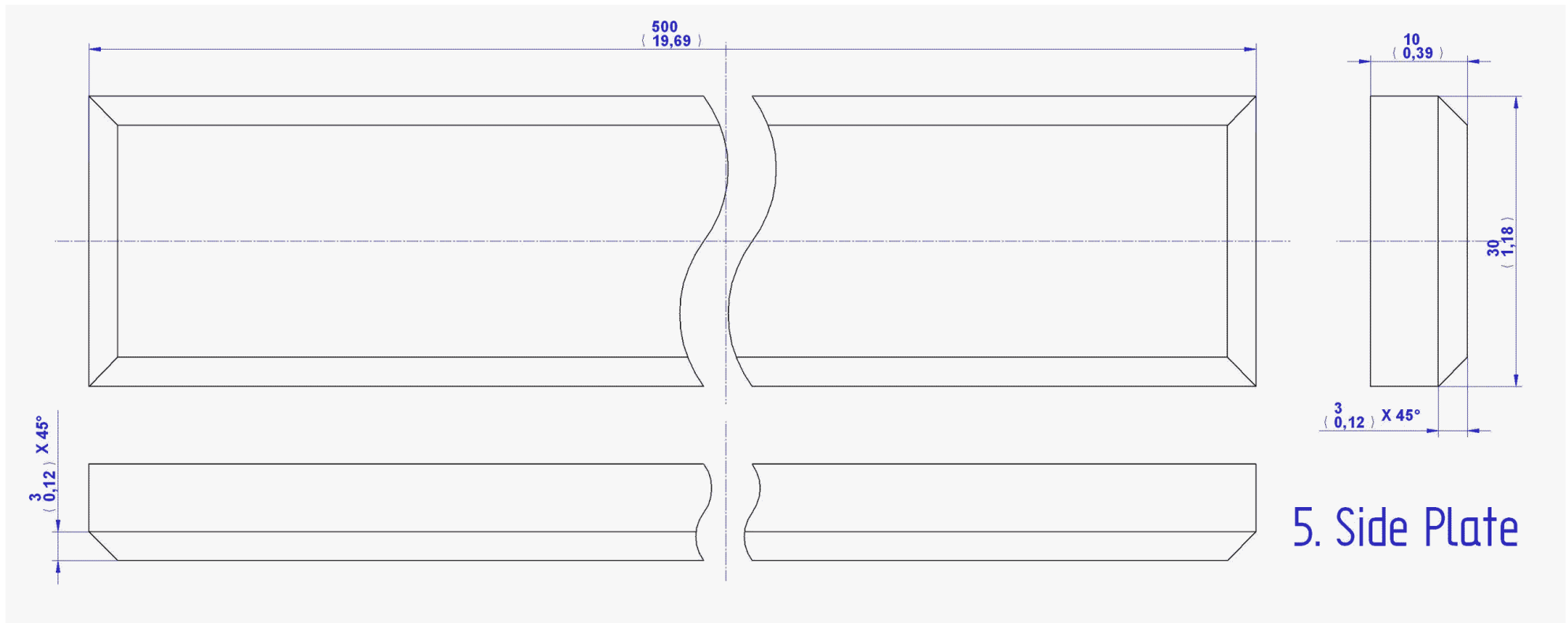




### 3. Leg Holder

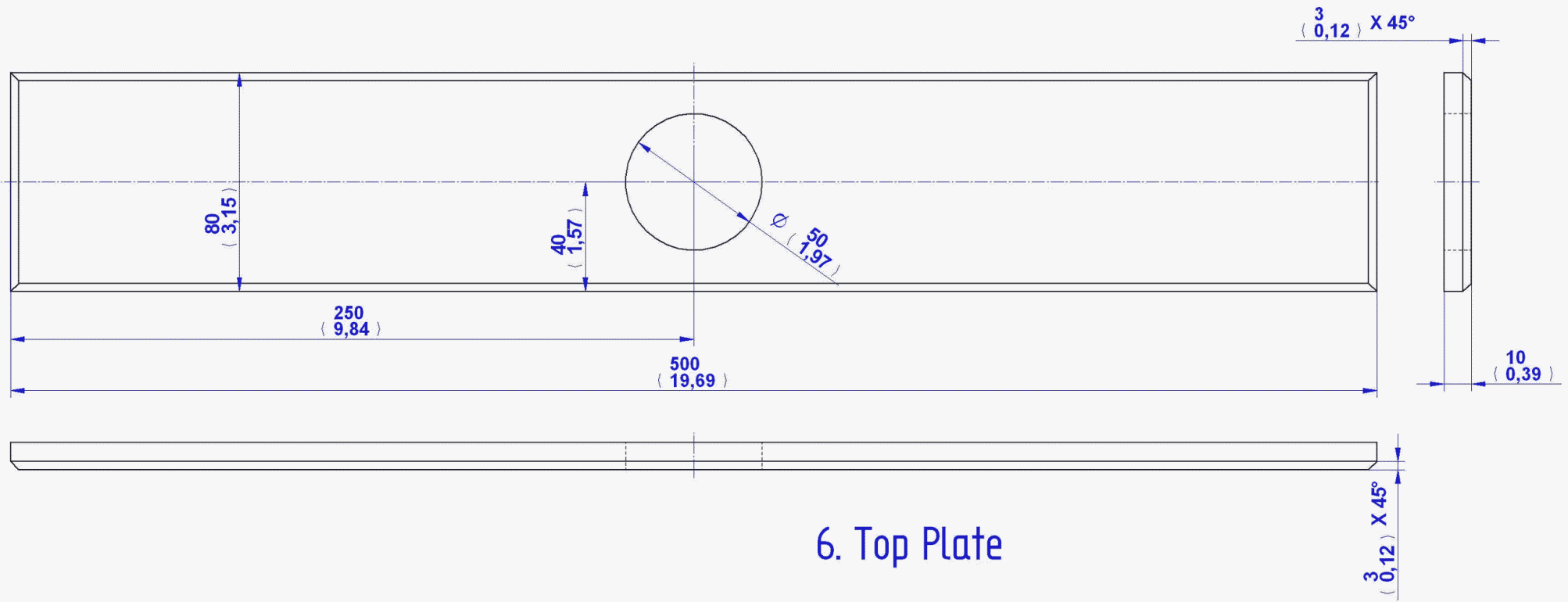


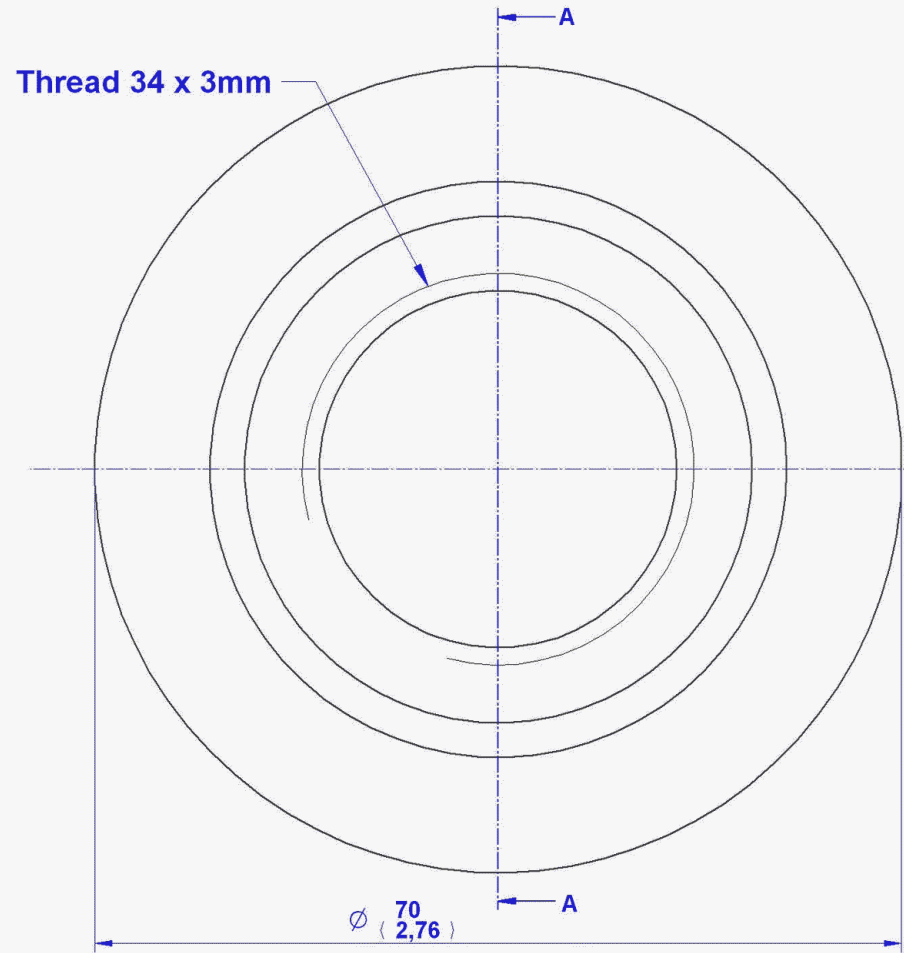
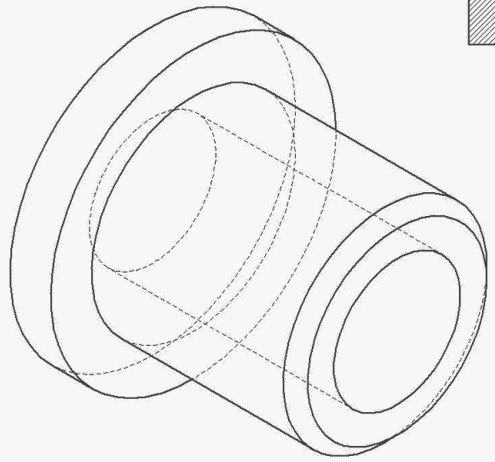
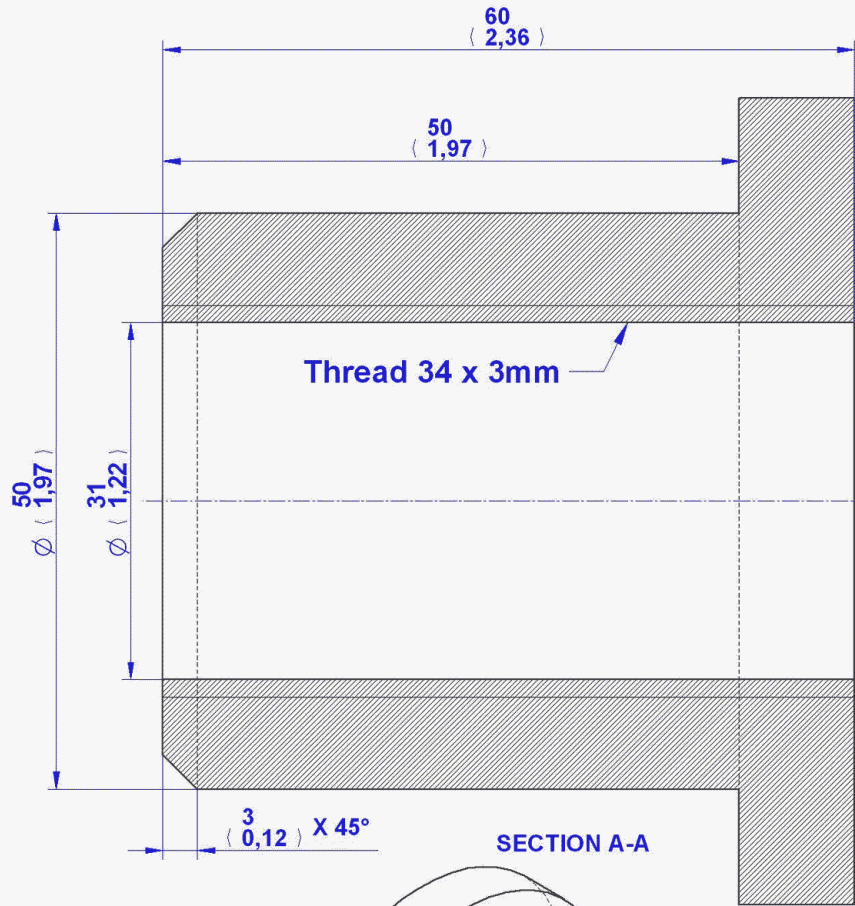




5. Side Plate

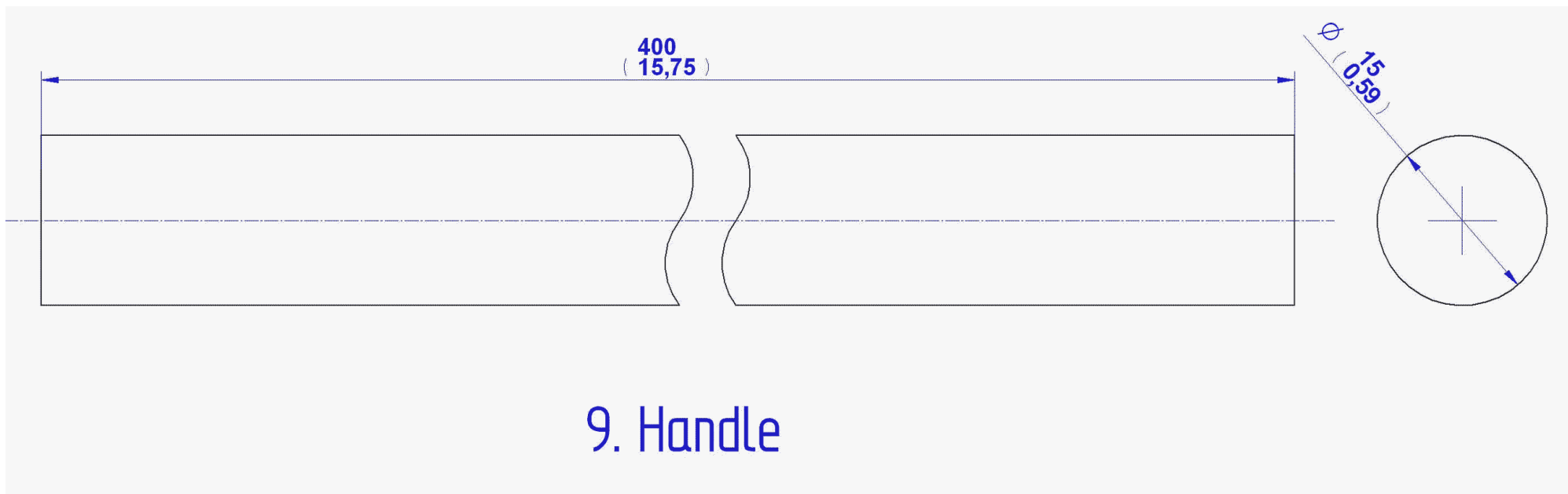


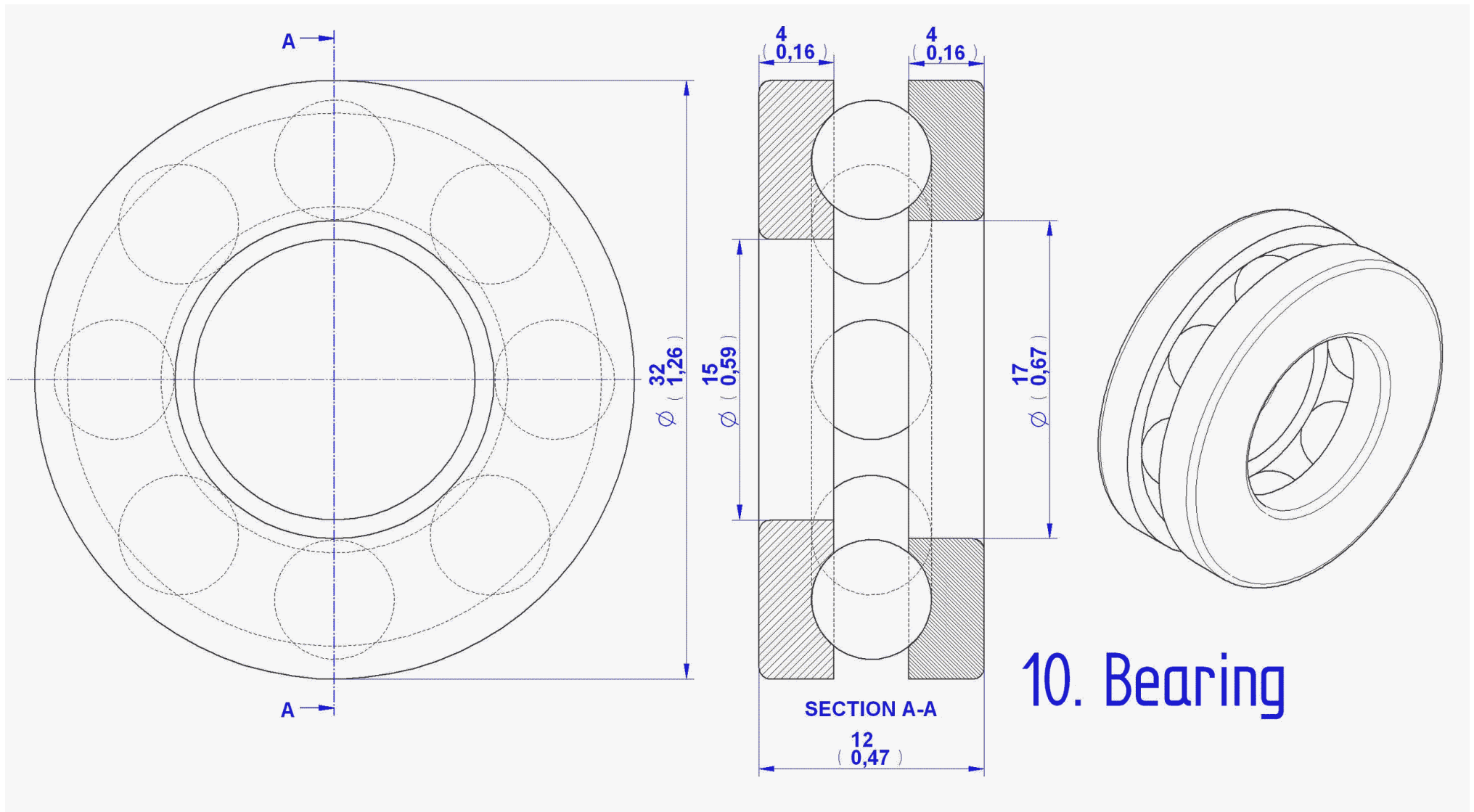




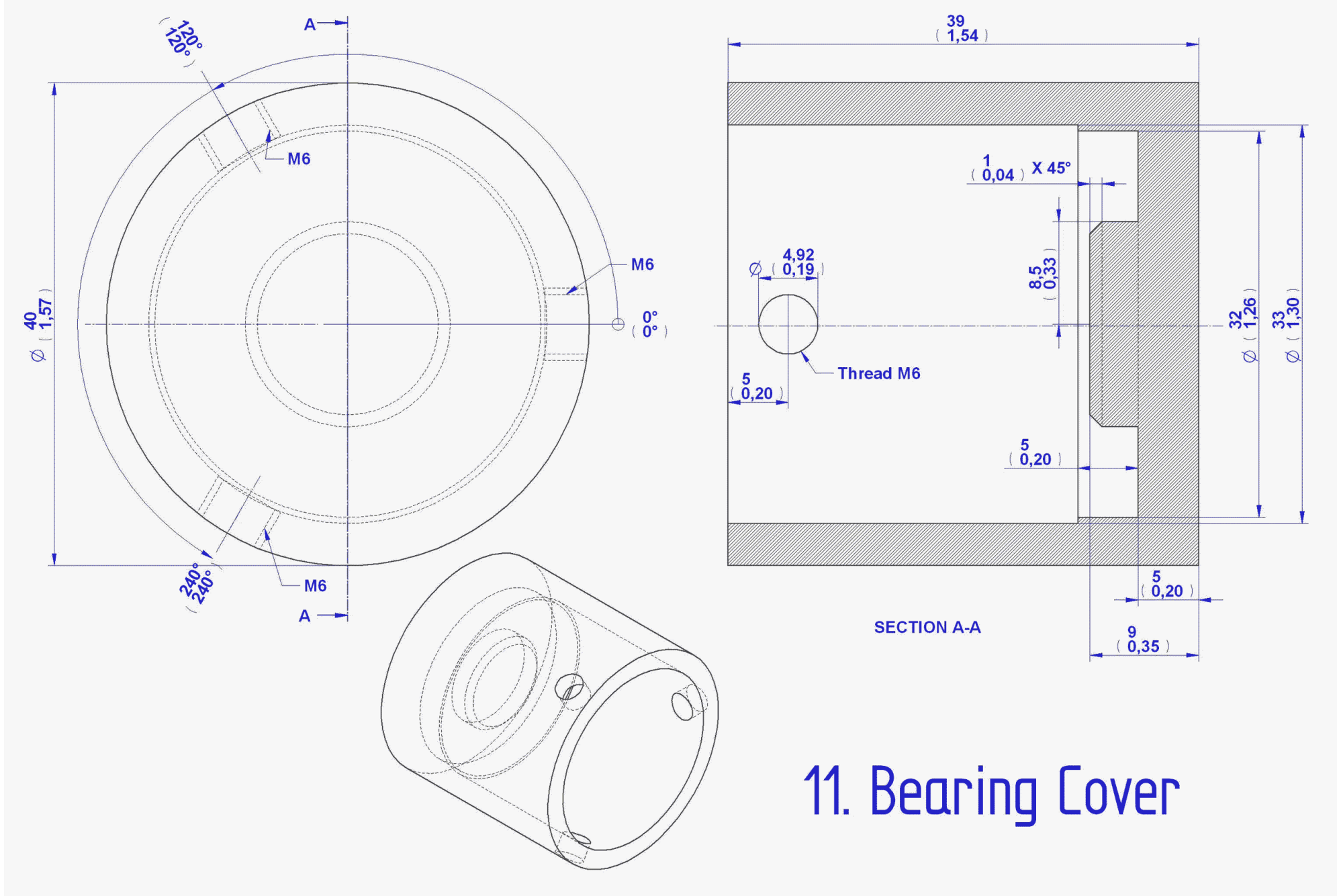
# 7. Shell

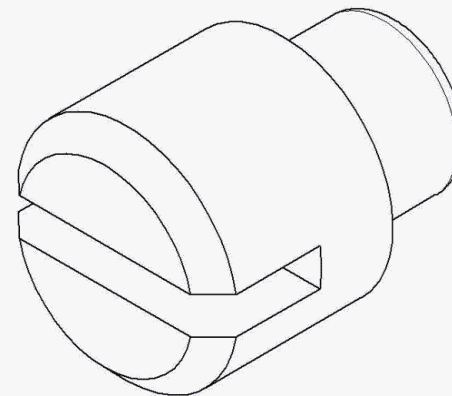
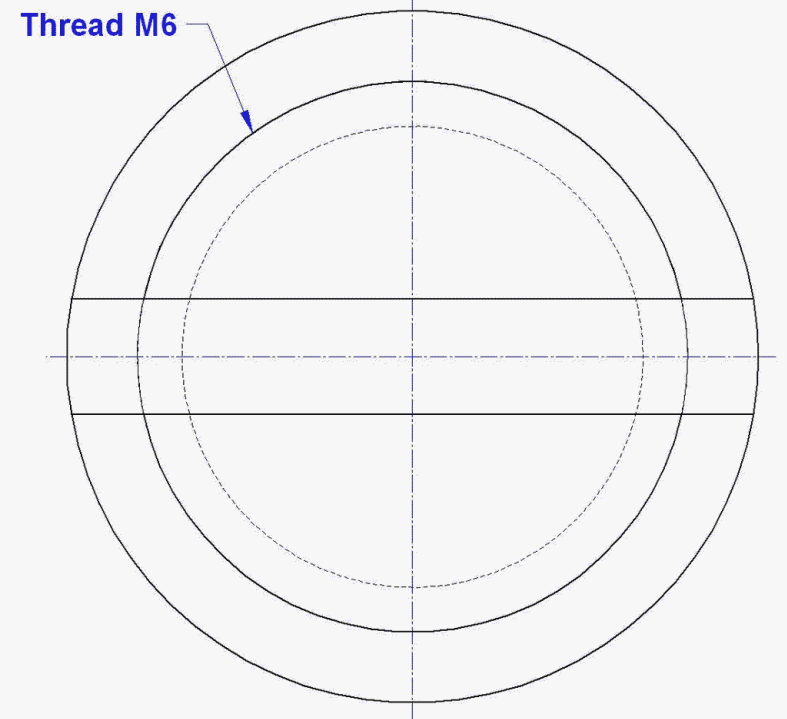
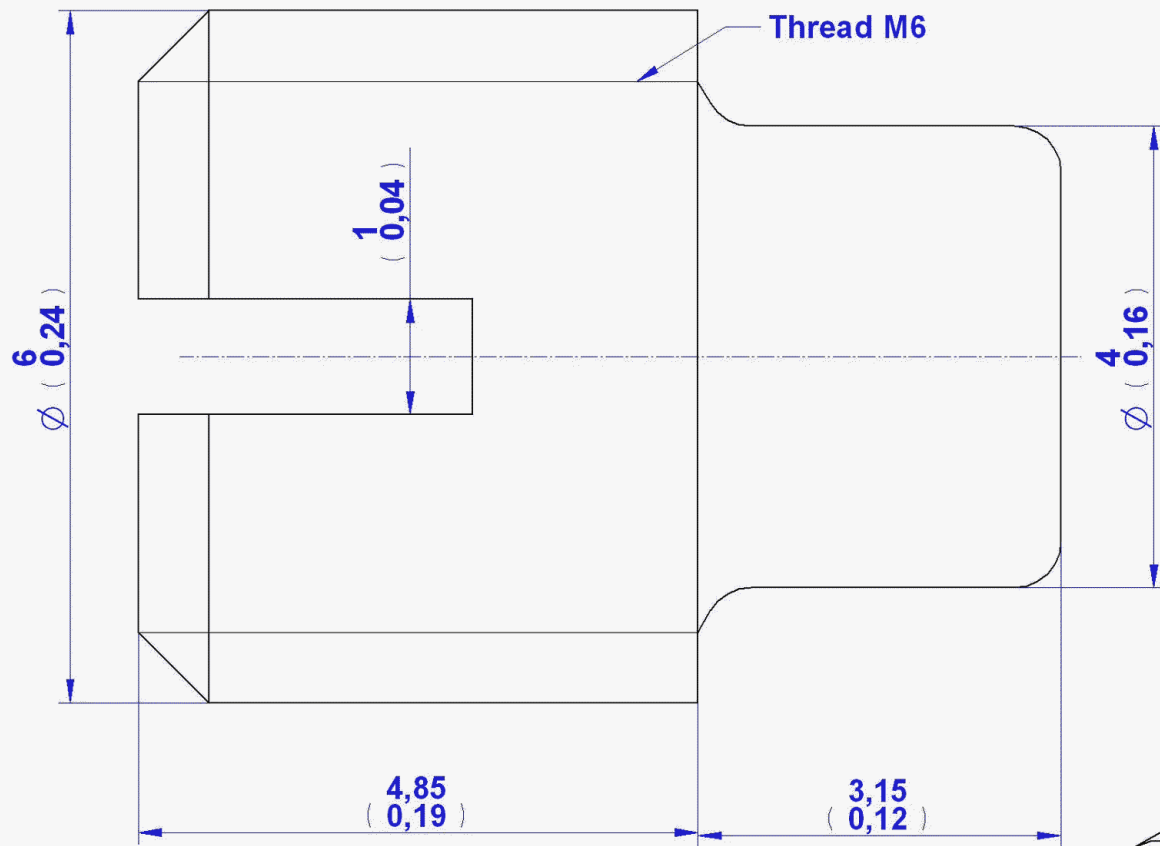






10. Bearing

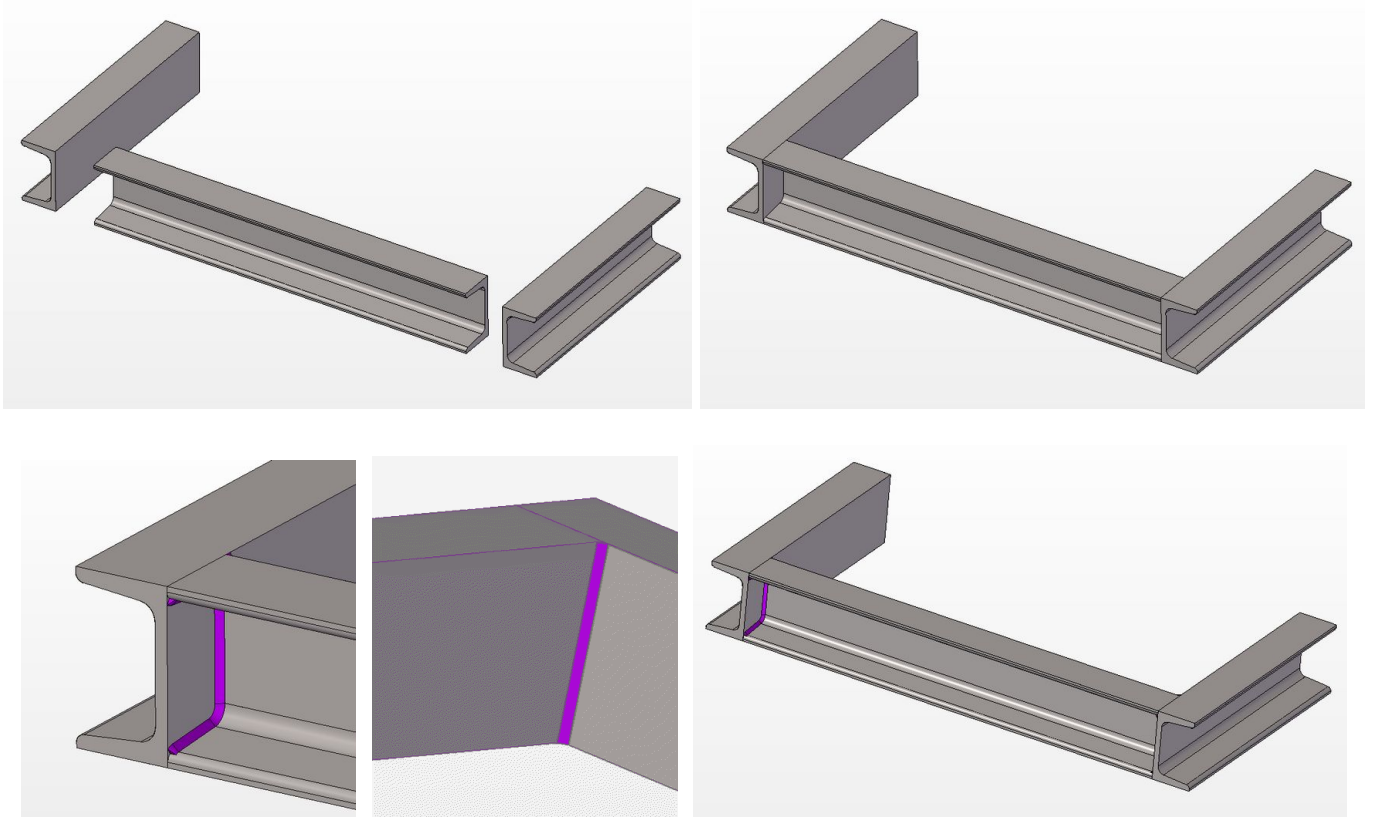




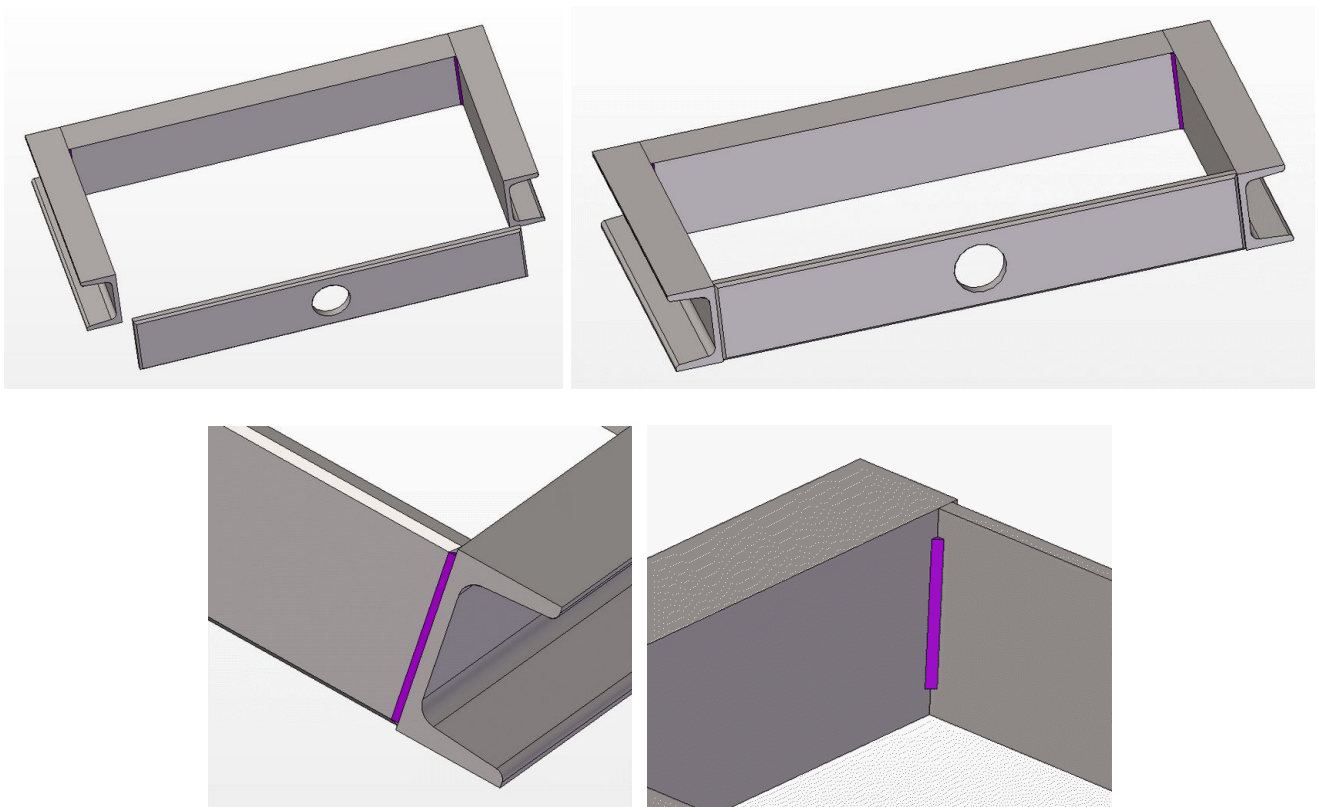
12. Slotted Set Screw M6x8mm

## Assemblage images

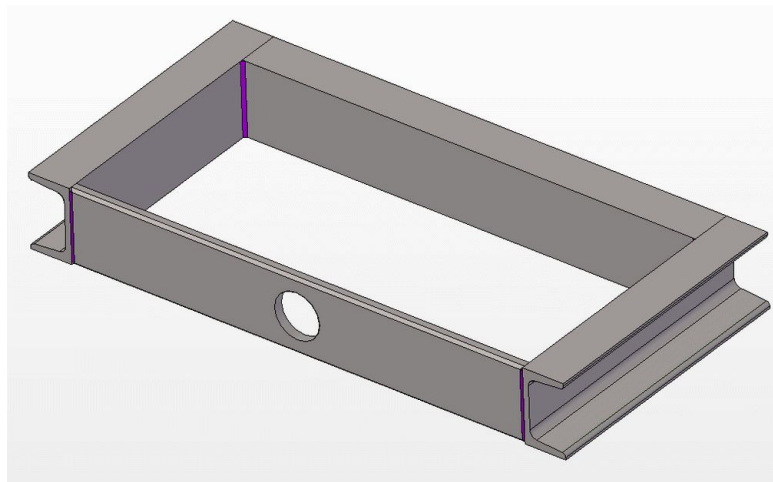
1.



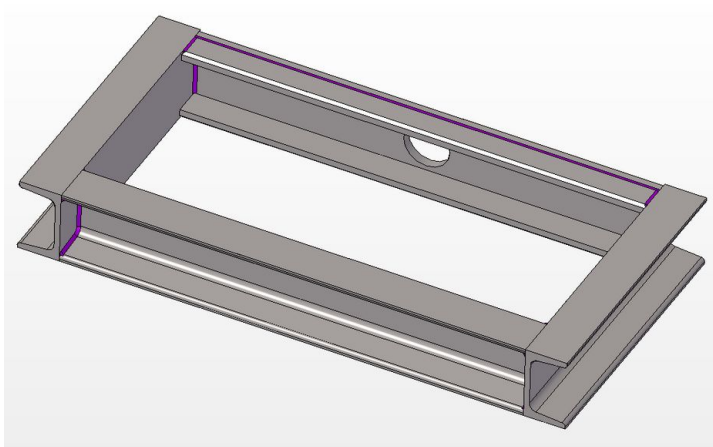
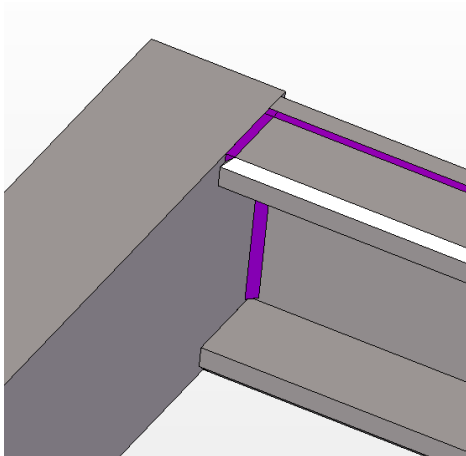
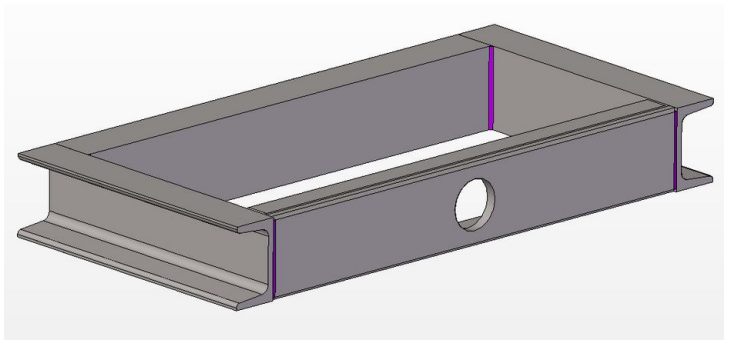
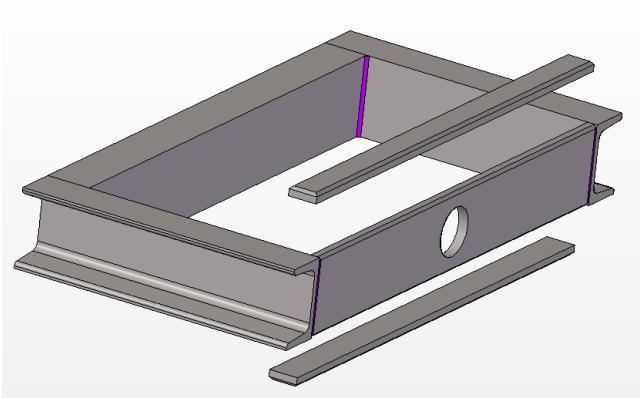
2.



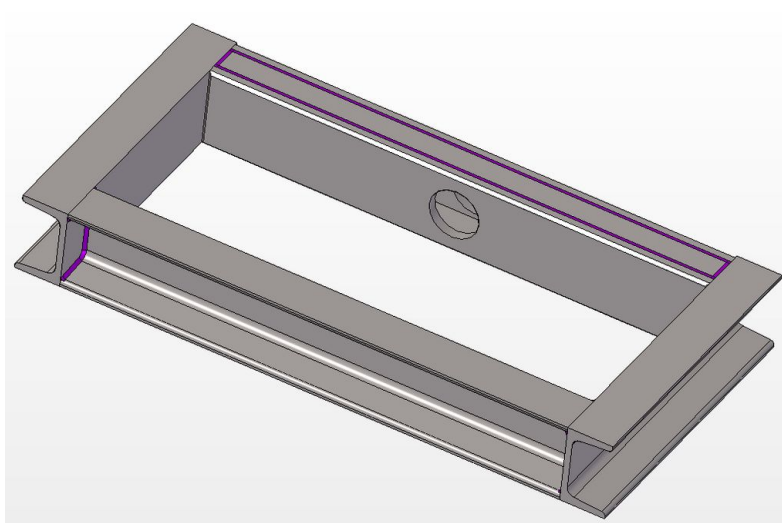
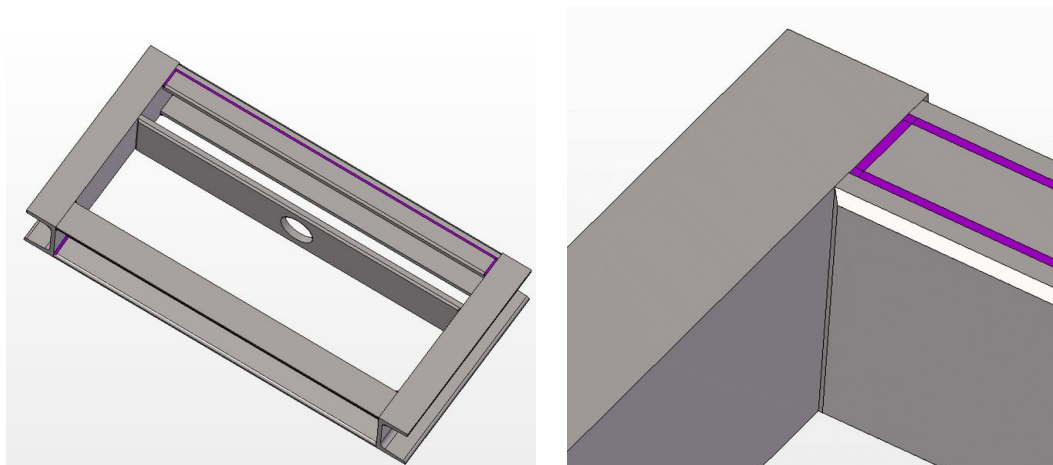




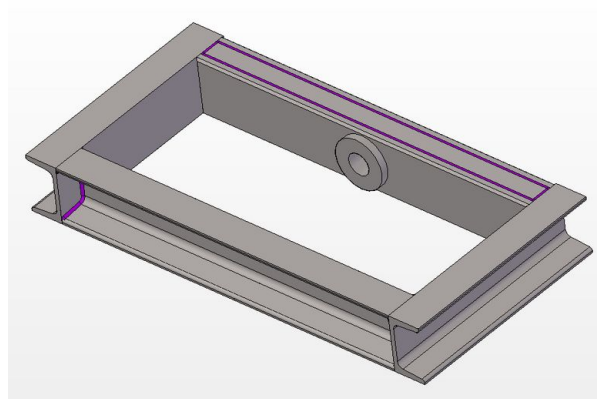
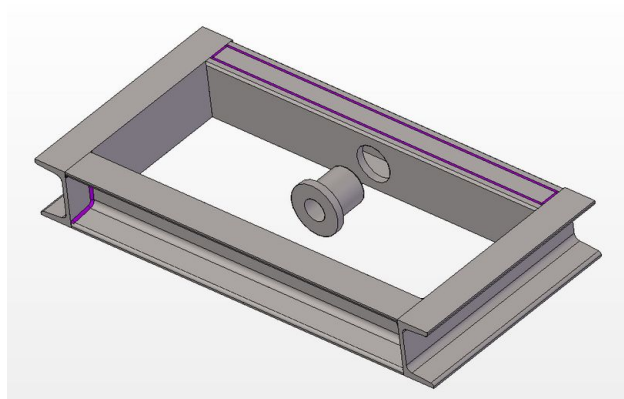
3.

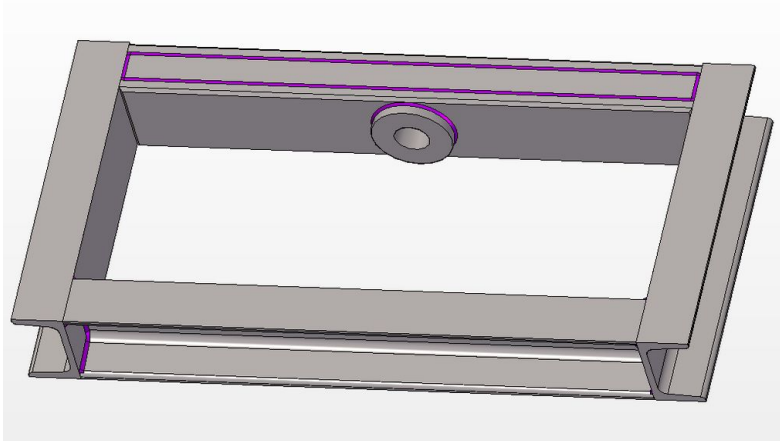
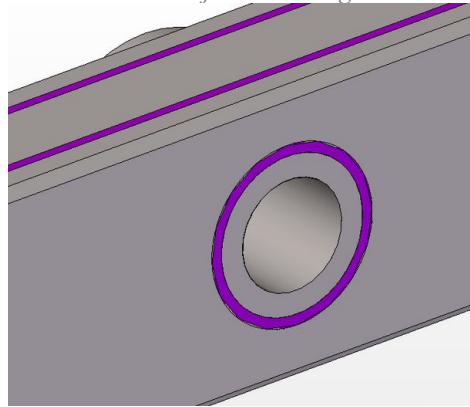
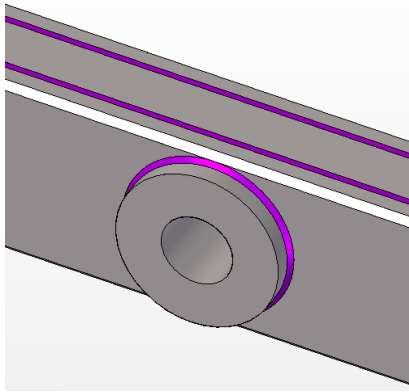


4.

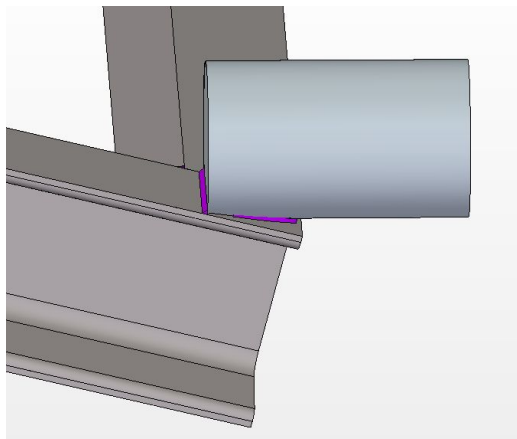
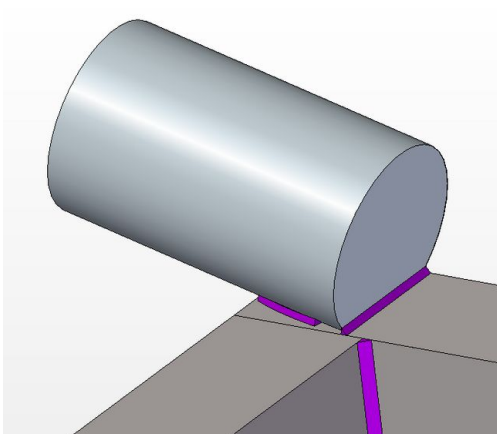
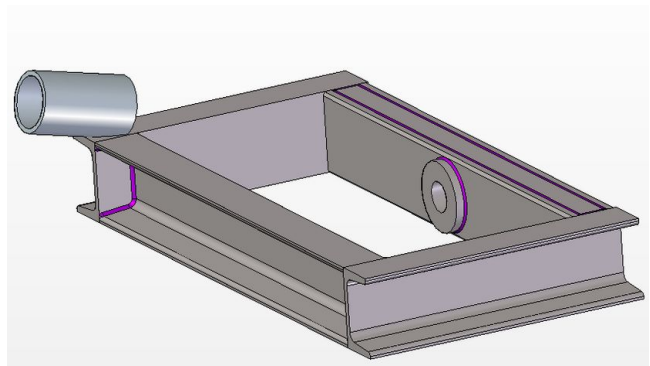
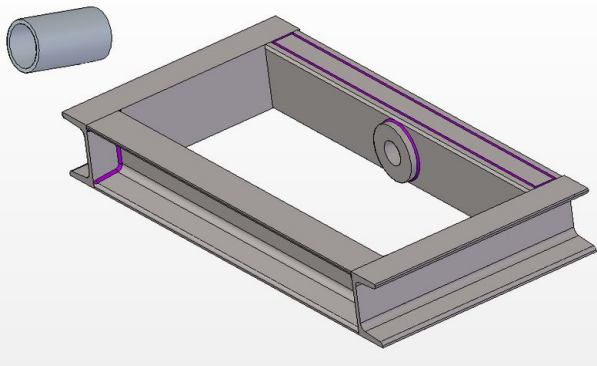


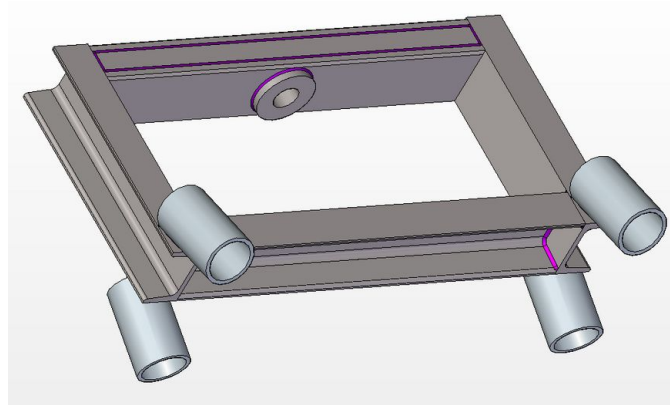
5.



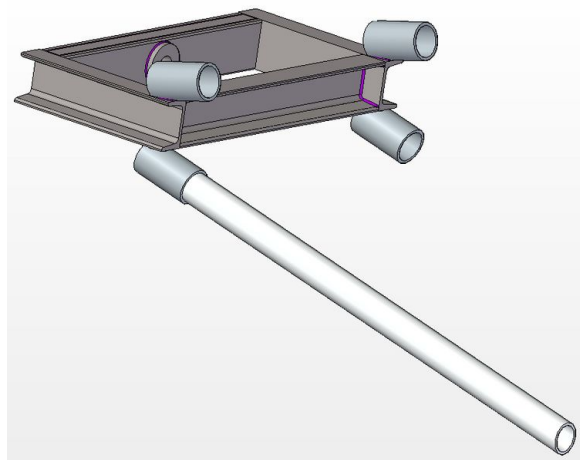
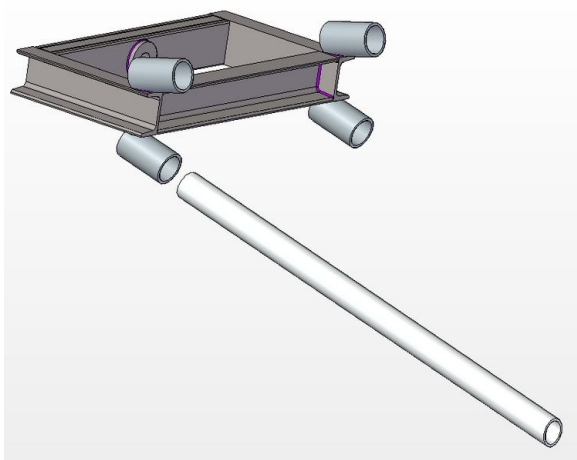


**6.**

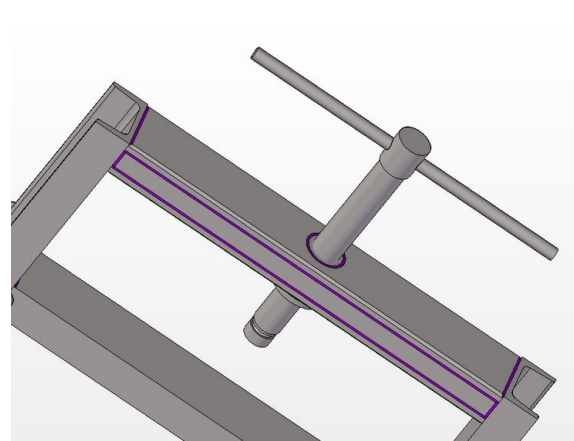
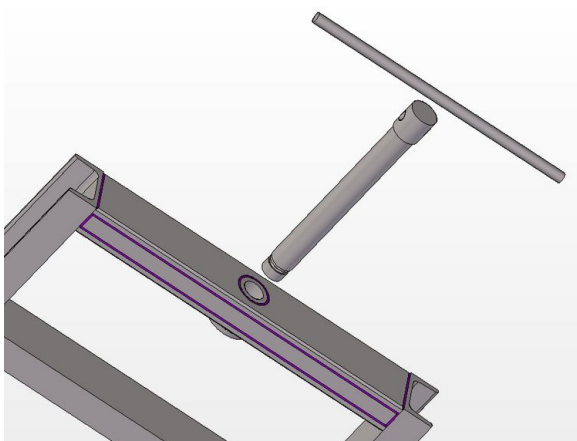




7.



8.



9.

