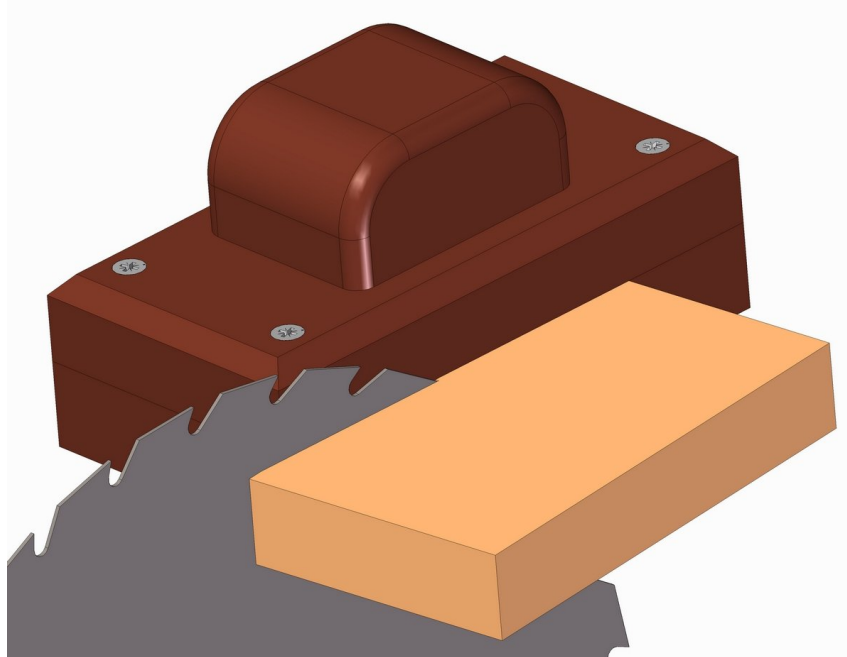


Wedge cutting jig plan

Due to extensive use of wedges, here we are presenting a very simple jig with which you can easily and quickly cut a large number of wedges.

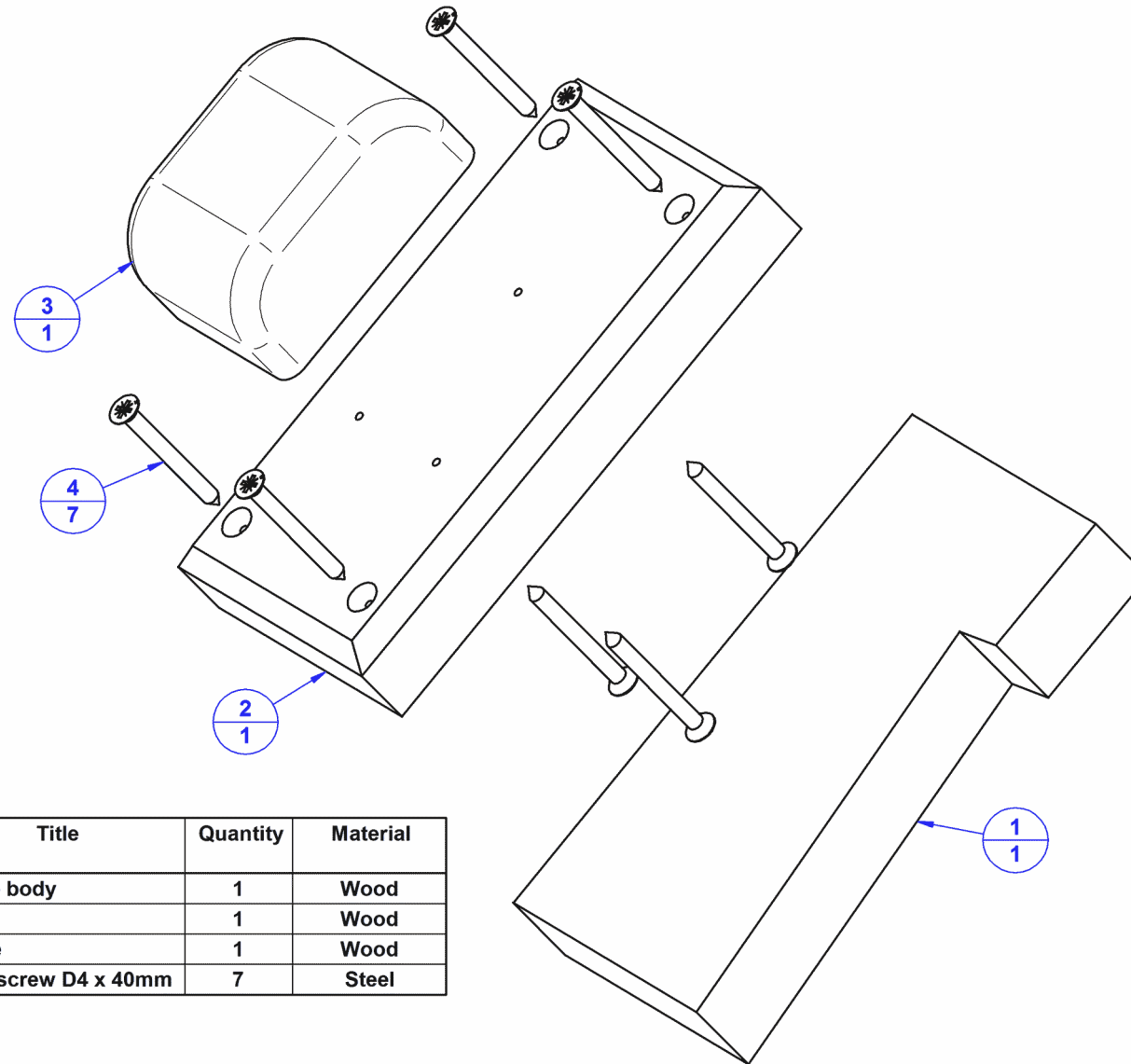
Its construction based on the plan drawings can be easily customized to wedge dimensions that you mostly need in your work. The whole construction of this jig consists of only three parts (wedge body, body and handle) that are interconnected with wood screws. This jig construction requires a fence to be fixed at a distance of 76mm (3 in) from the saw blade board. If you want the wedge cutting jig to ride in the miter slot, you have to adjust the jig construction to your table saw, i. e., the distance between the miter slot and the blade.



The wedges have been in use since prehistoric times to split logs and rocks, and even today, this tool has countless uses in woodworking workshop, from splitting, lifting, or tightening, to leveling, then securing a hammer head onto handle, augmenting clamps while gluing to holding door and windows while mounting. Wedge cutting jig is one of the simplest woodworking jig, enabling one to cut wood wedges on the table saw.

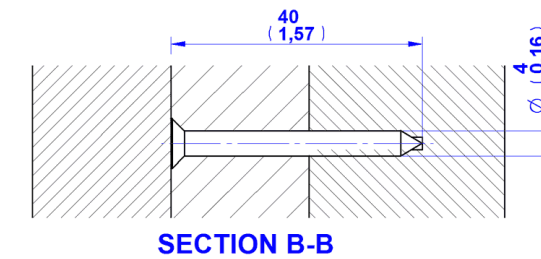
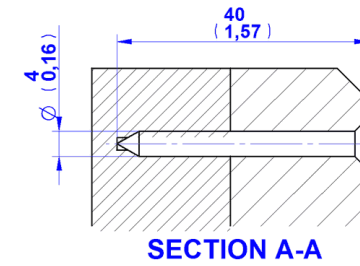
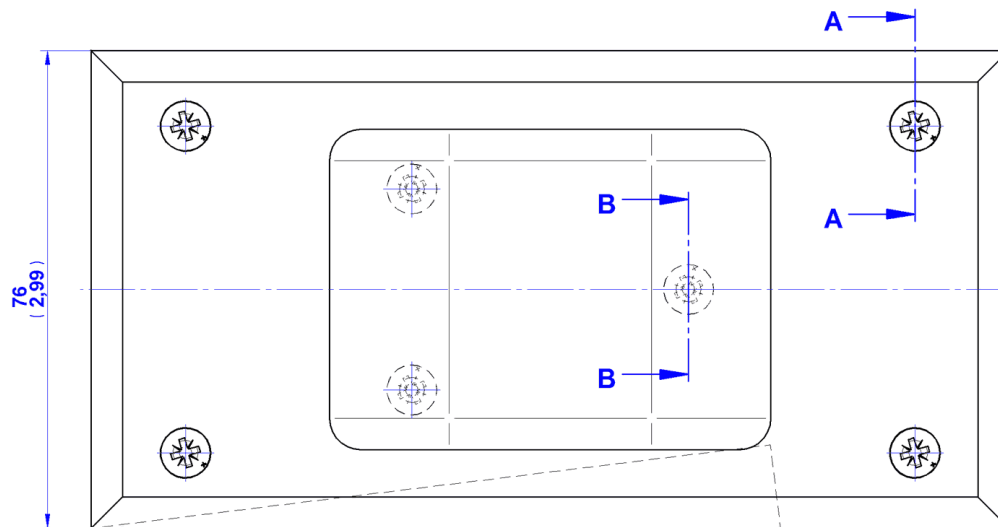
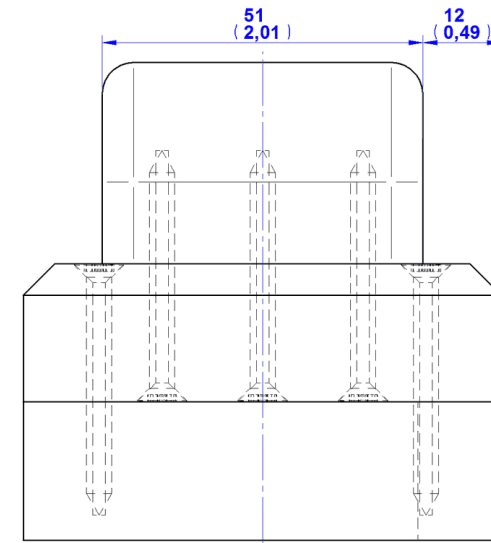
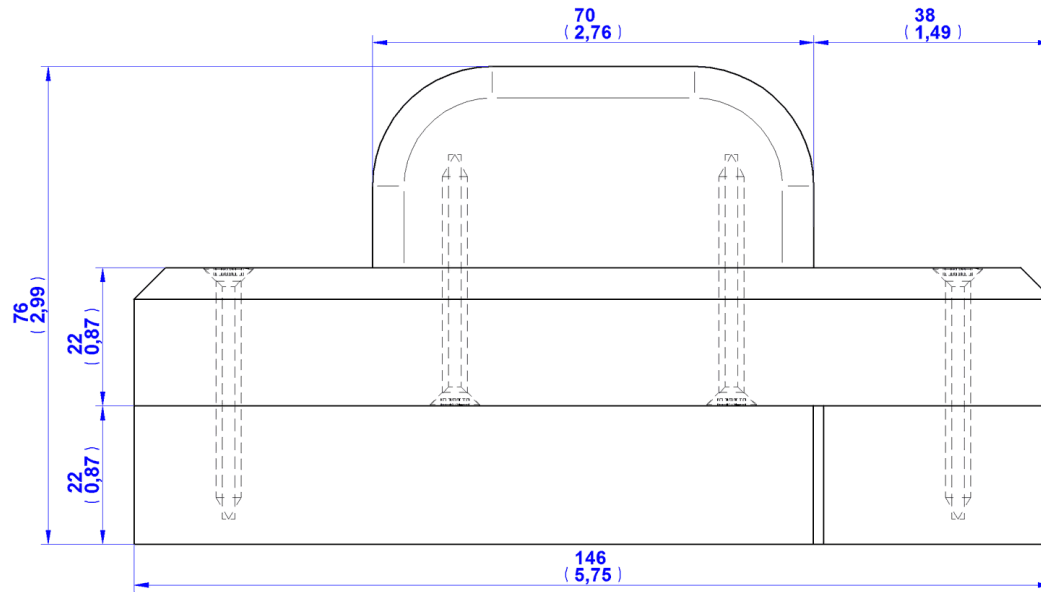
This jig is not intended for all woodworkers but for those who use a large number of same-size wedges in their work, e. g., window and door installation masters.

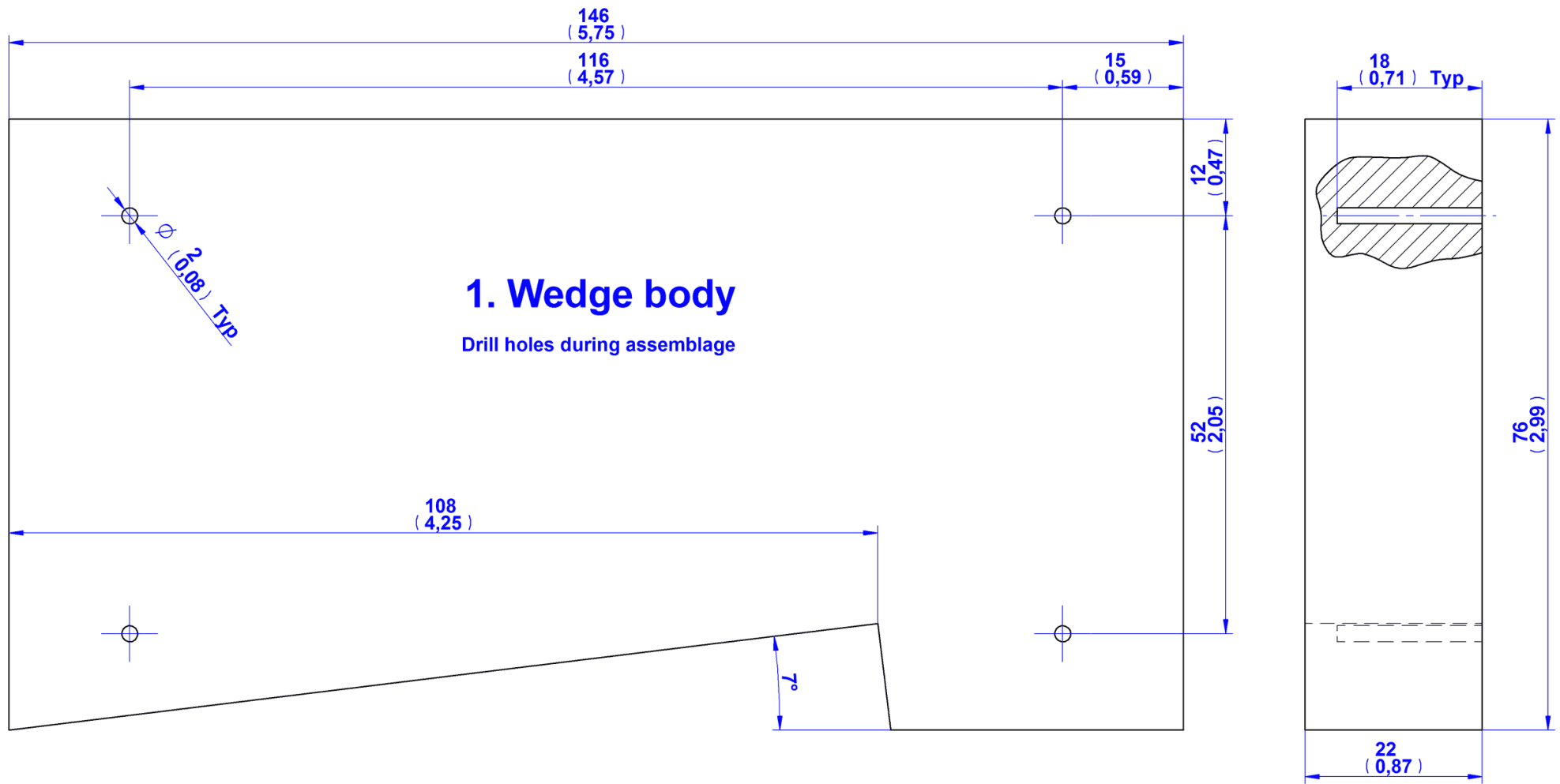
Parts list

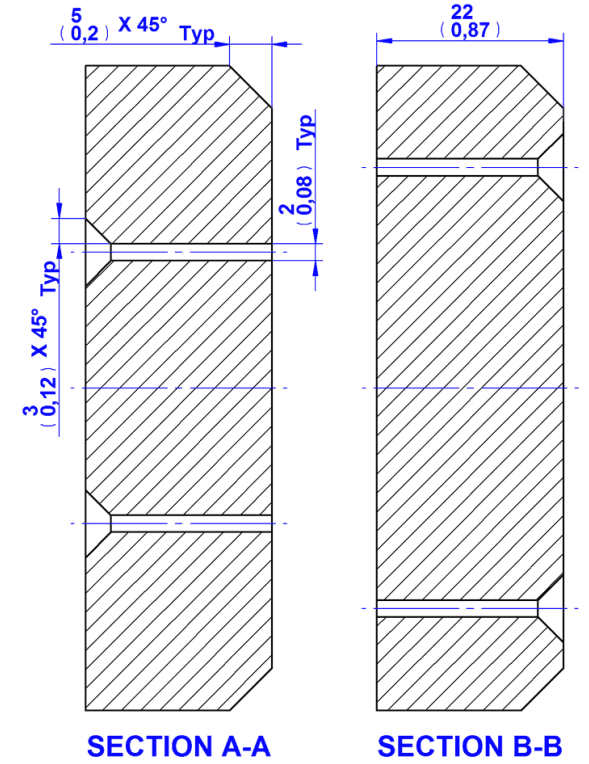
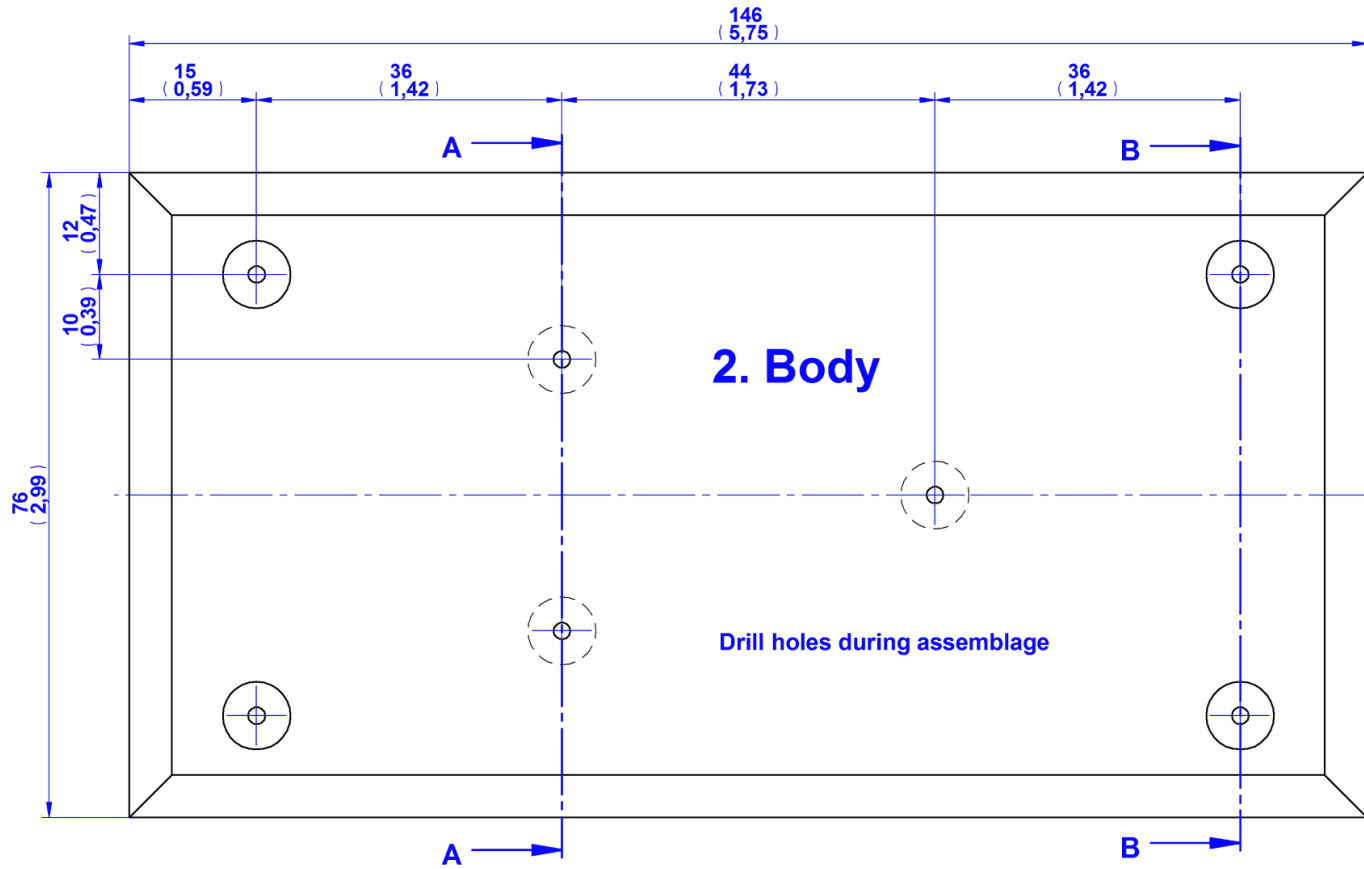


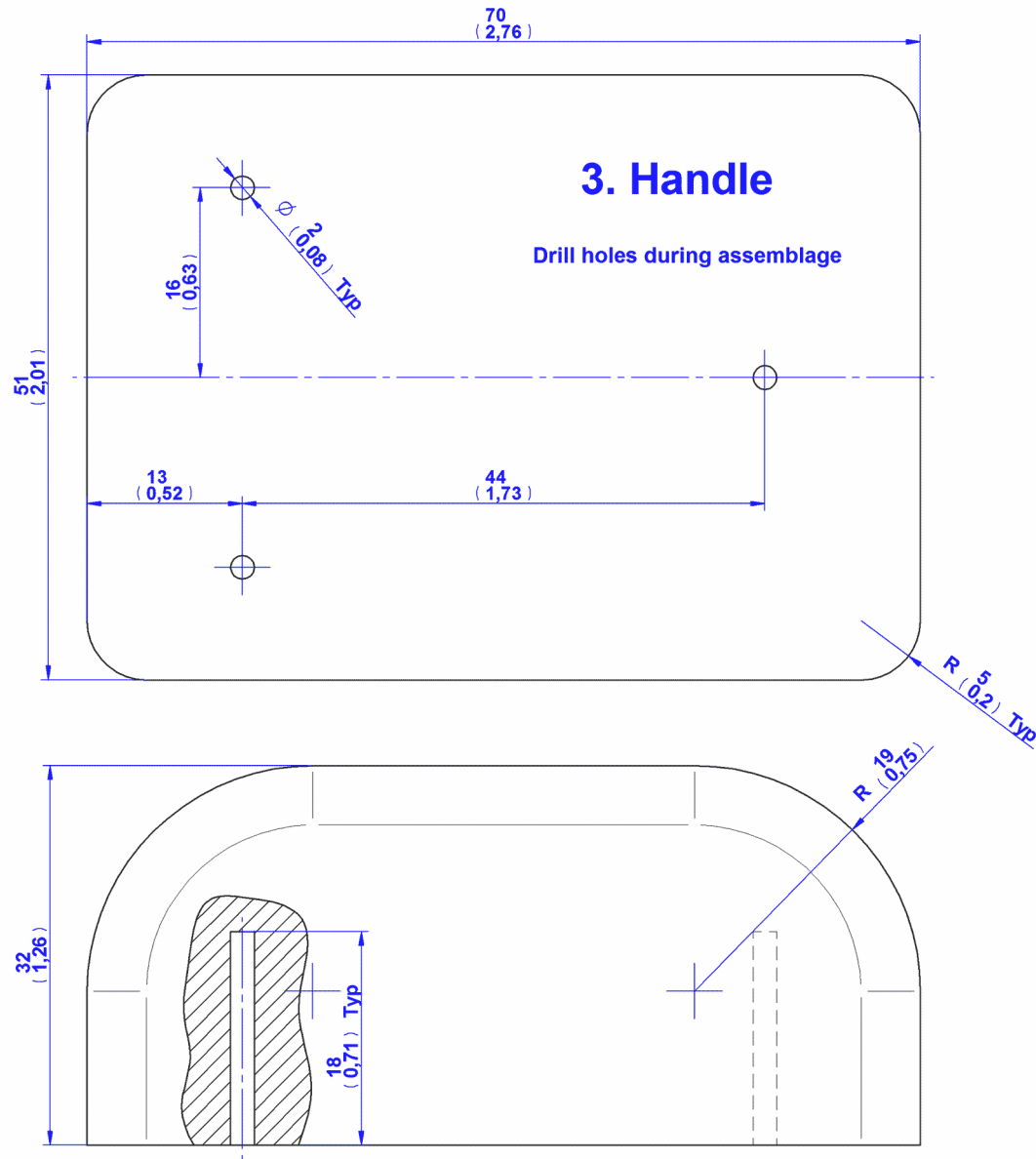
| Item Number | Title | Quantity | Material |
|-------------|----------------------|----------|----------|
| 1 | Wedge body | 1 | Wood |
| 2 | Body | 1 | Wood |
| 3 | Handle | 1 | Wood |
| 4 | Wood screw D4 x 40mm | 7 | Steel |

Assembly drawing







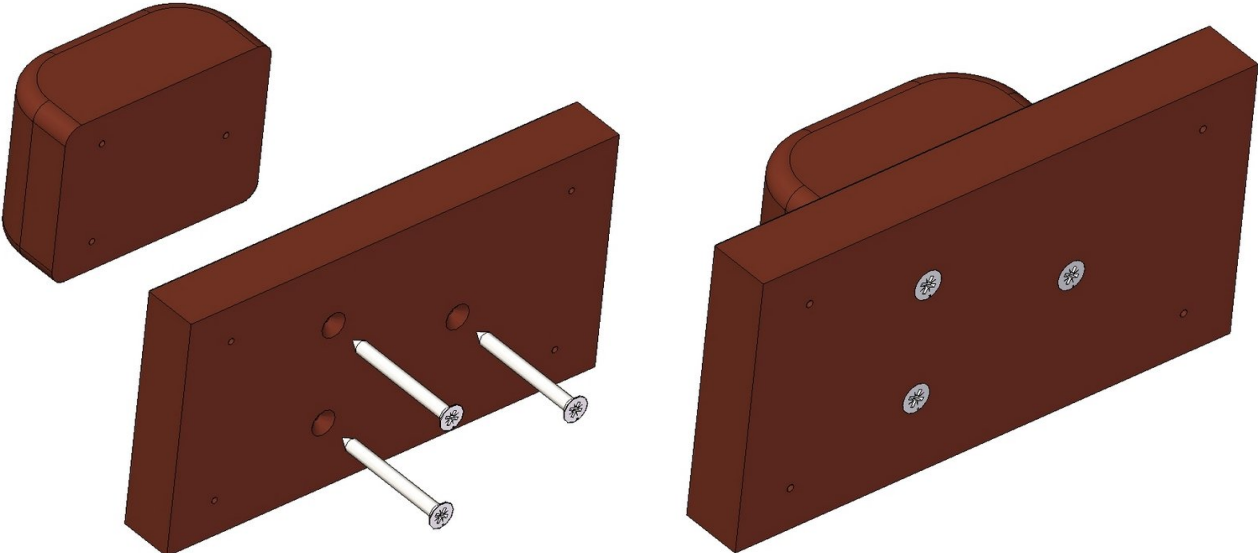


Standard parts



Assemblage instructions

1.



2.

