

Wooden perpetual calendar plan



Each nation since the very beginning of Civilization tried to grasp and measure the time and divide it into some kind of even and logical segments. One of the earliest attempts was of course the sun calendar. Since then, many new calendars were invented, and one of the simplest and yet very practical is the perpetual calendar.

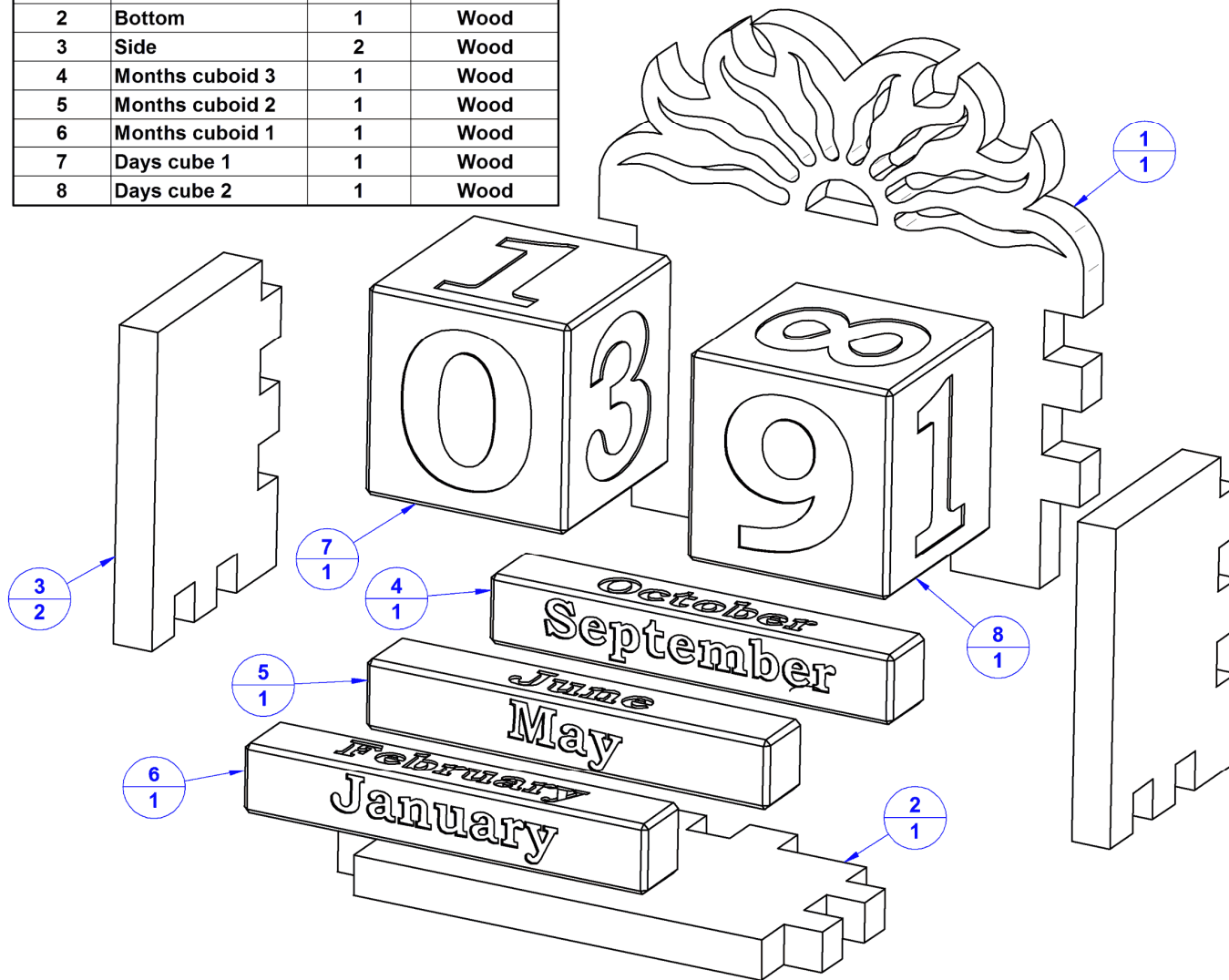
Wooden perpetual calendars have wooden pieces with months written on it and wooden blocks with numbers on it that can be moved around to display correct date, and help you to keep track of the correct date over the span of many years.

Our wooden perpetual calendar plan has a vintage feel because of the sun decoration on the body, and it is quite easy to make. The wooden perpetual calendar is perfect item for any office, receptionist desk, bank or the study room in your home. These wooden calendars can be given as office gifts all year round, and colored to suit the recipients taste. You can give them to a co-worker with the company name engraved on it, and that will be a perfect and original office item, that anyone would like to have on their desktop.

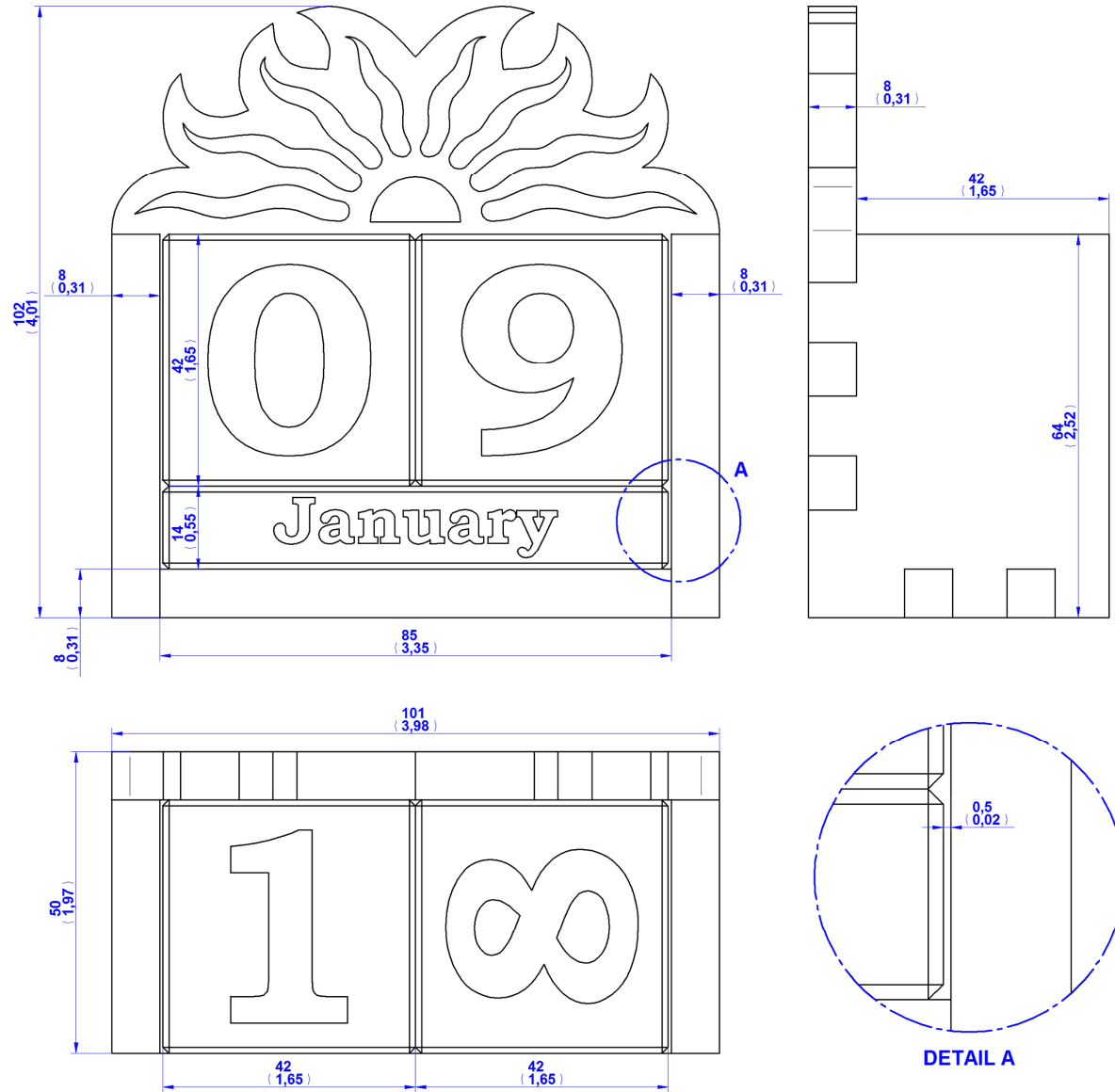
The measurements are given in millimeters, while the measurements given in inches are in brackets (1 inch = 25, 4 mm).

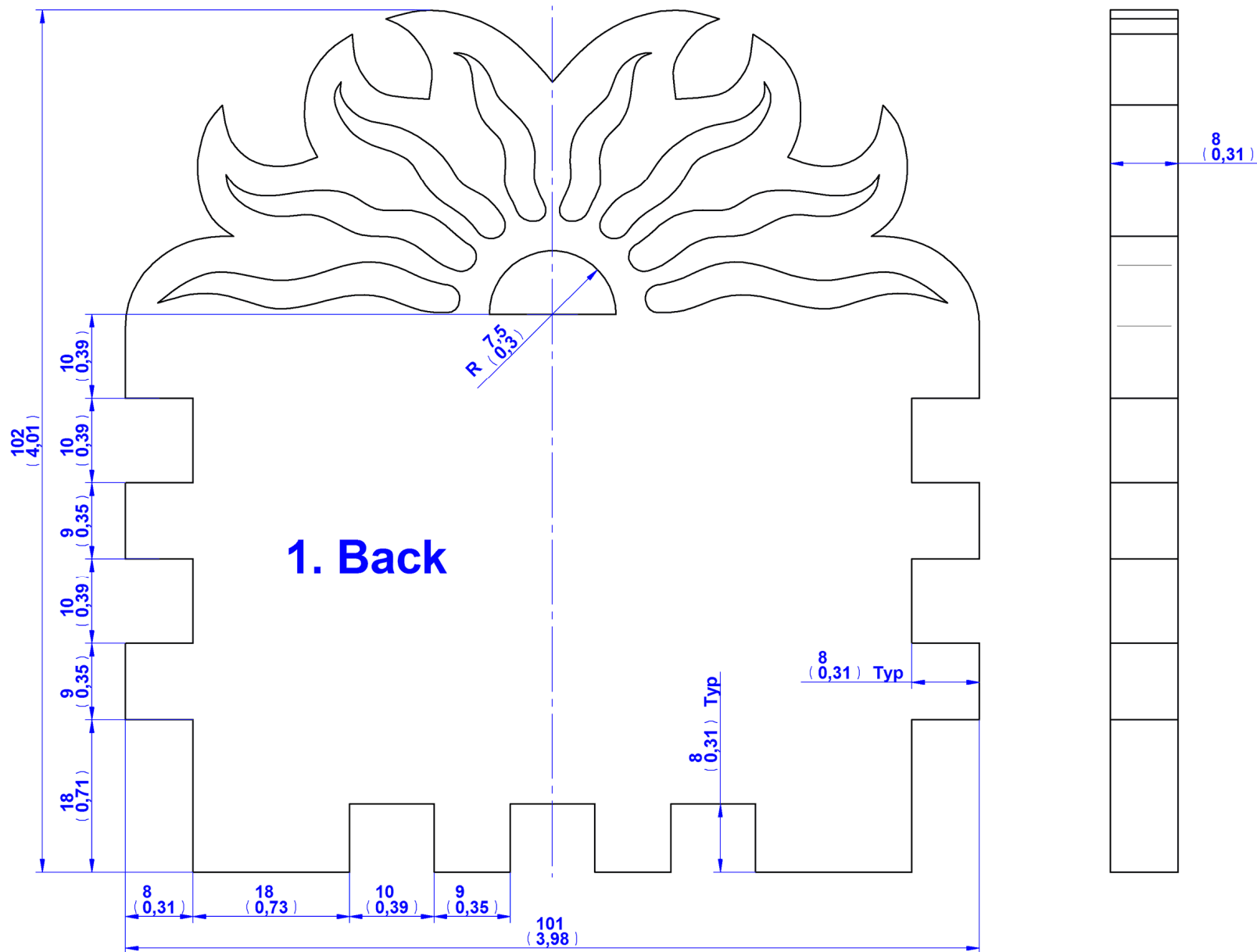
Wooden perpetual calendar plan – Parts list

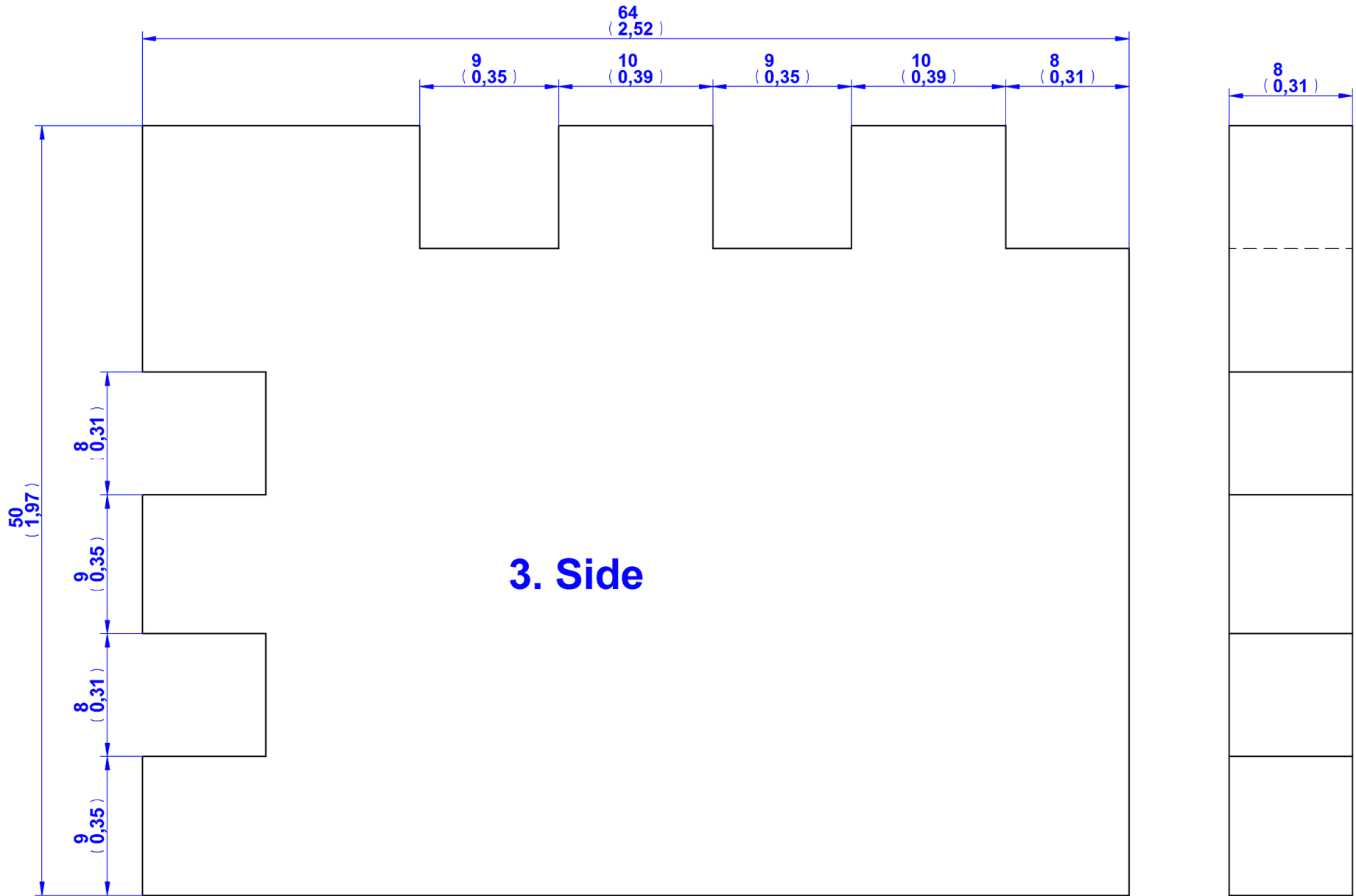
Item Number	Title	Quantity	Material
1	Back	1	Wood
2	Bottom	1	Wood
3	Side	2	Wood
4	Months cuboid 3	1	Wood
5	Months cuboid 2	1	Wood
6	Months cuboid 1	1	Wood
7	Days cube 1	1	Wood
8	Days cube 2	1	Wood

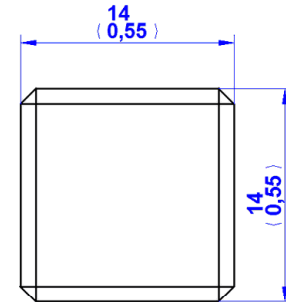
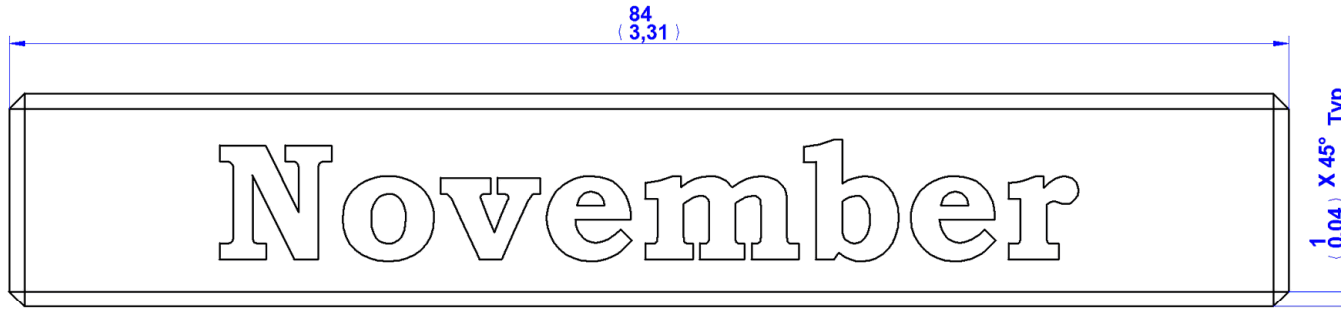


Wooden perpetual calendar plan – Assembly 2D drawing

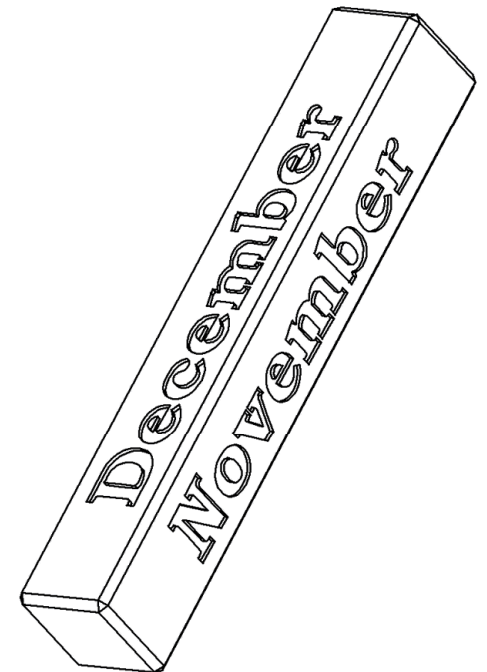
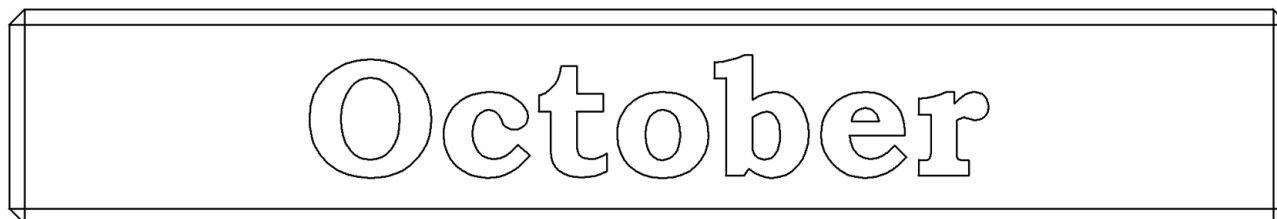
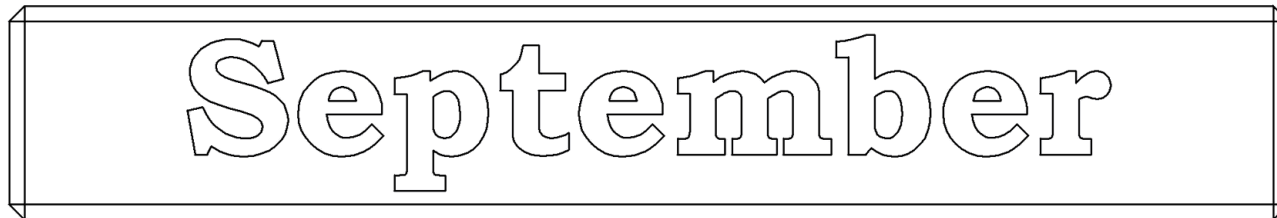
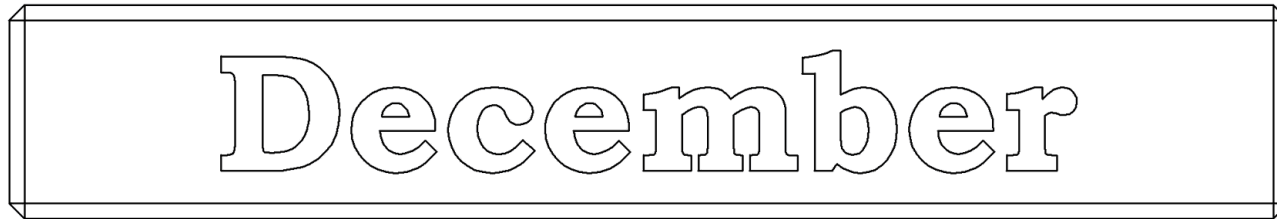


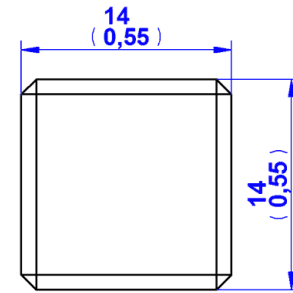
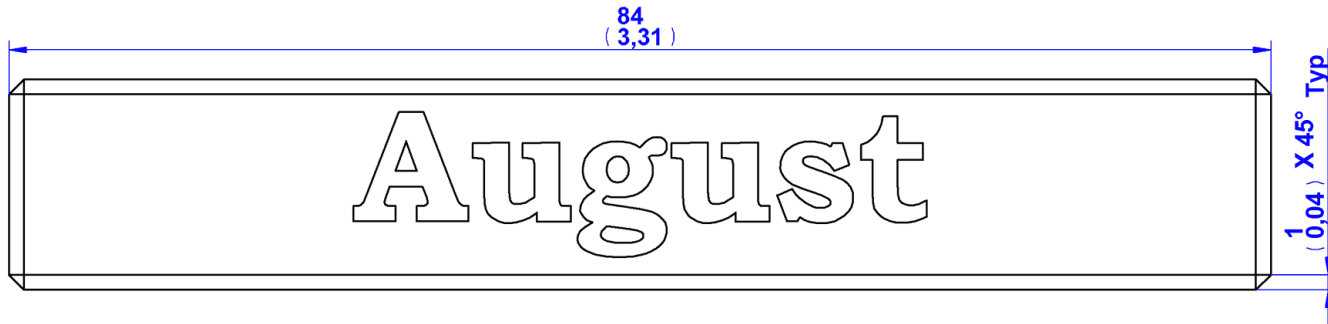




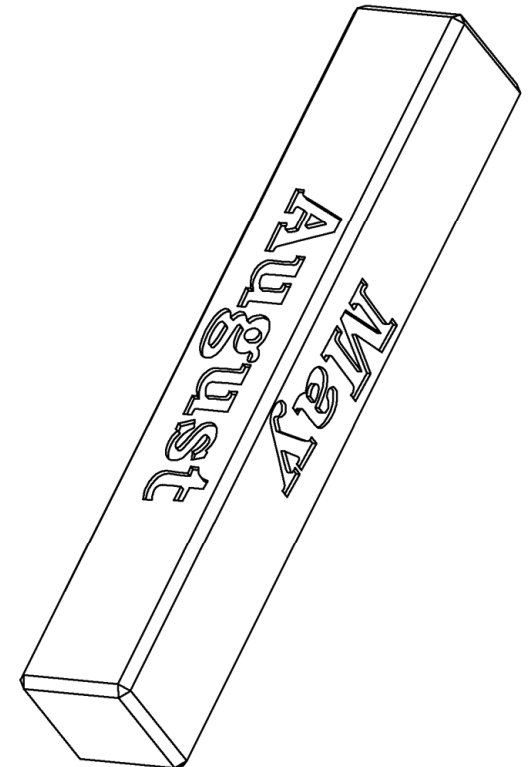
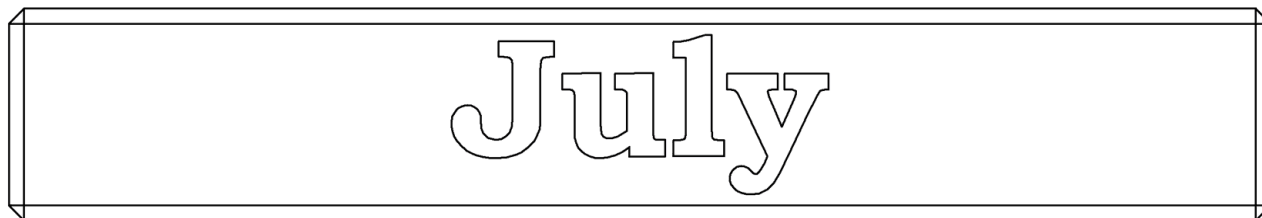
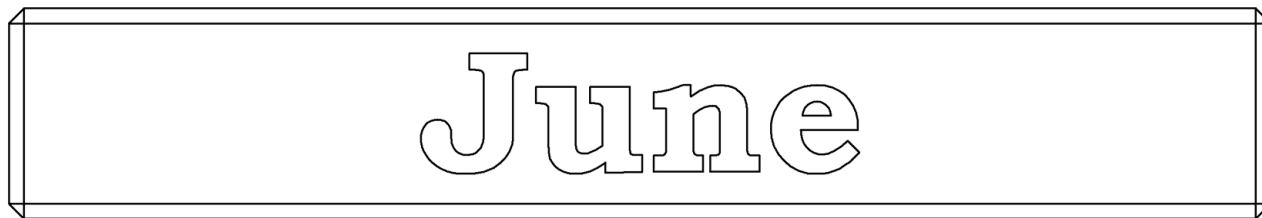


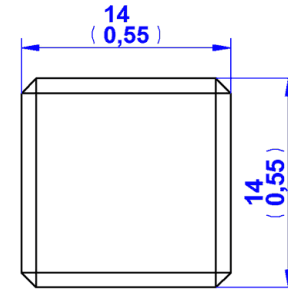
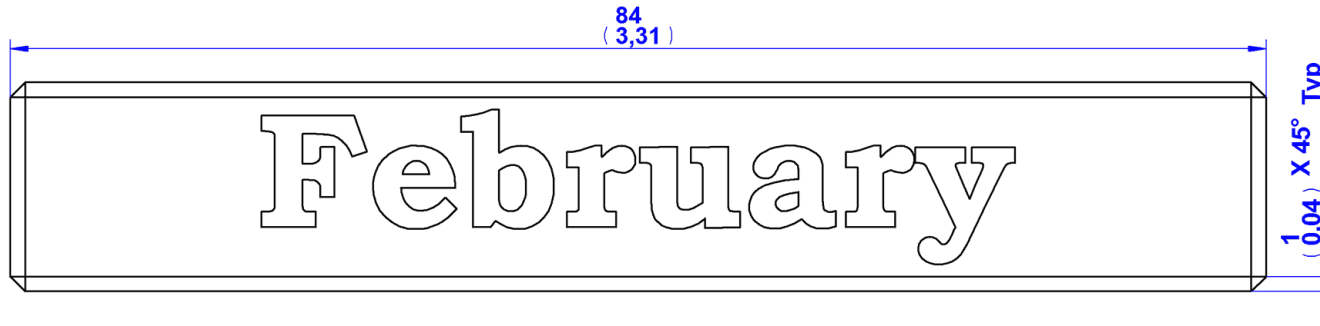
4. Months cuboid 3



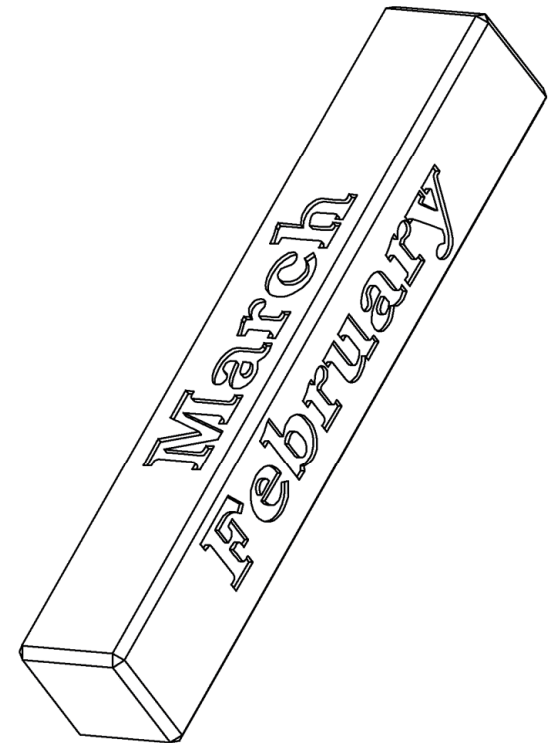
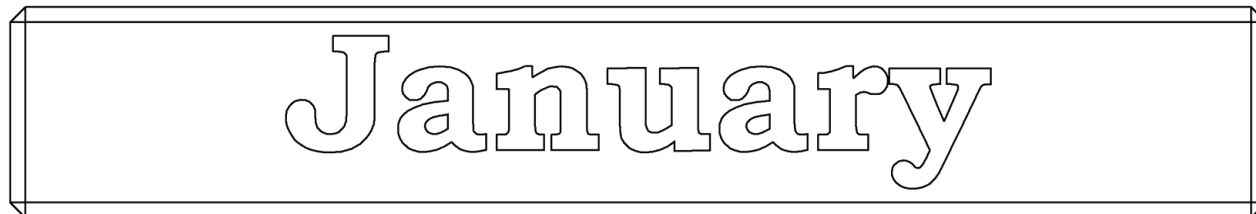
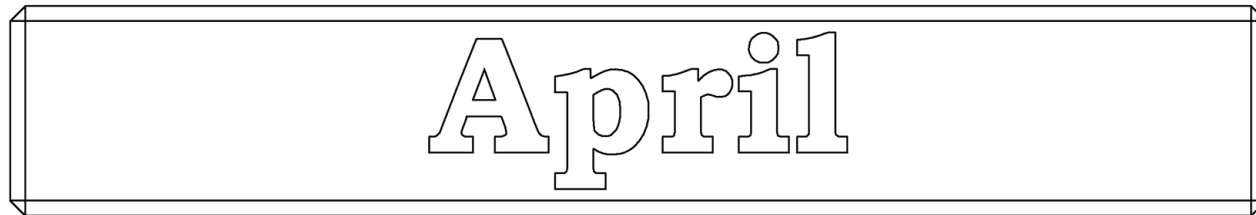


5. Months cuboid 2

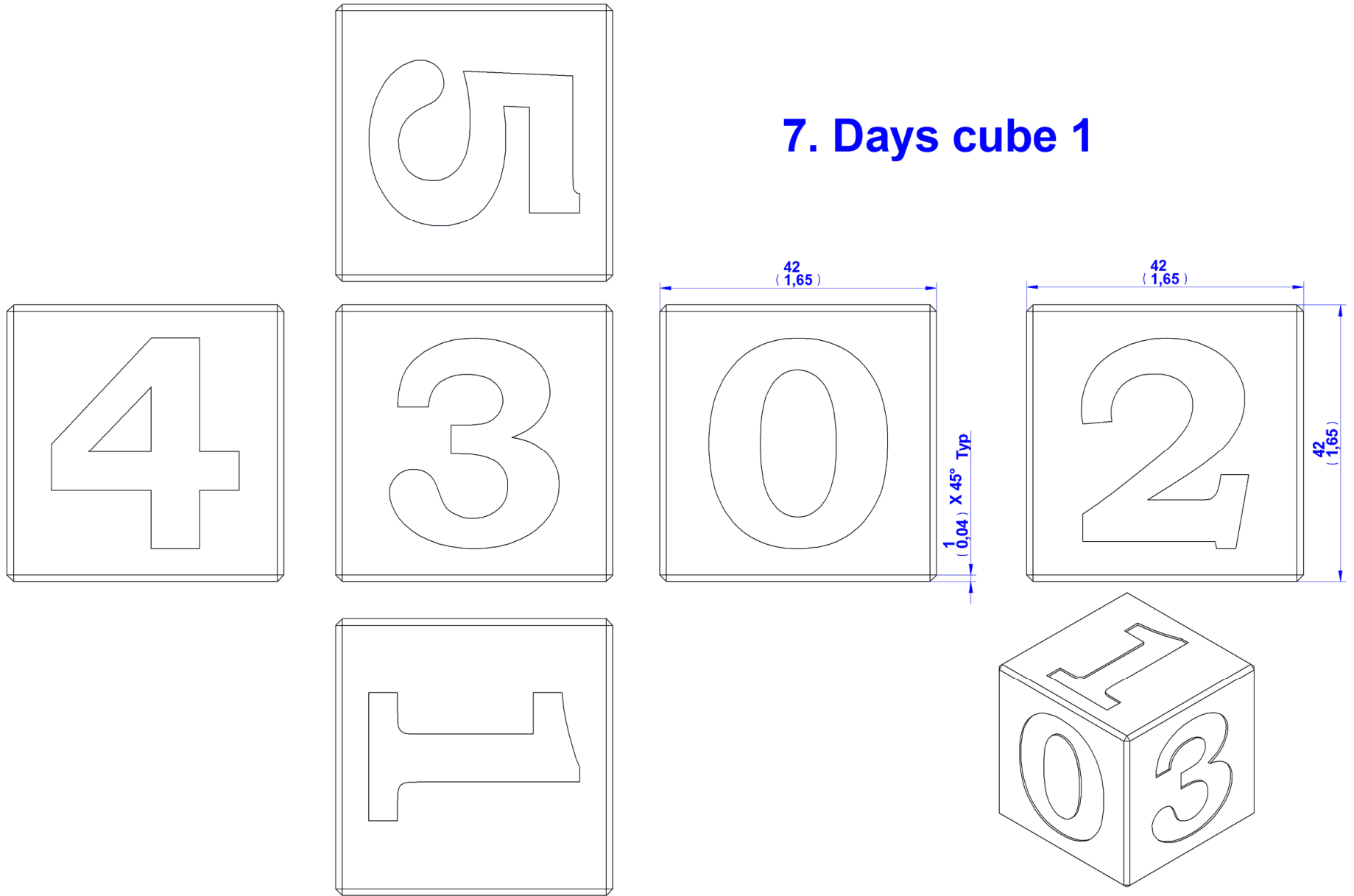




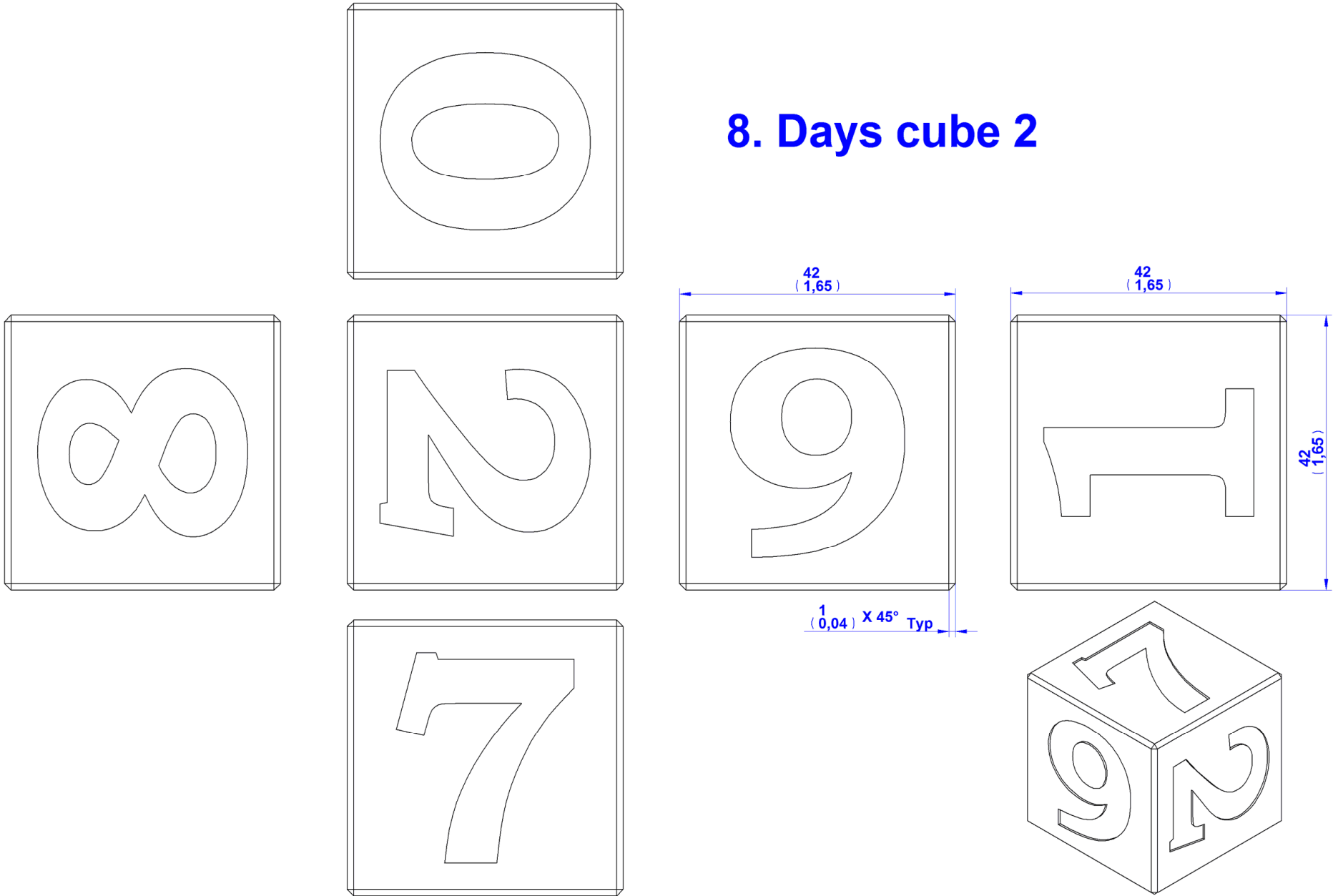
6. Months cuboid 1



7. Days cube 1

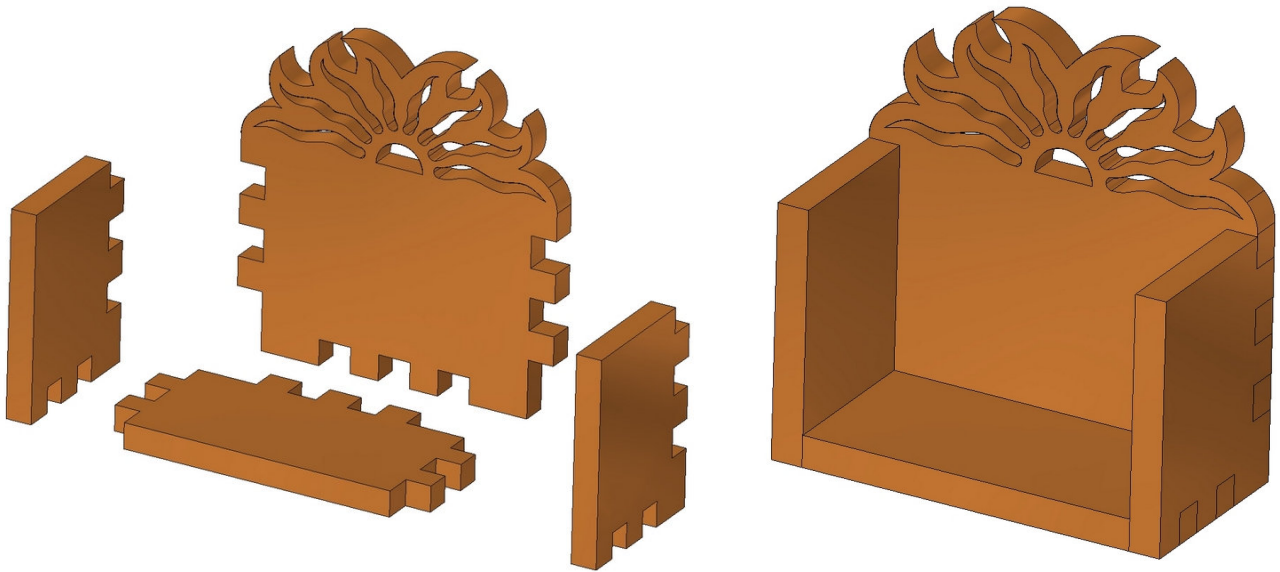


8. Days cube 2



Assemblage instructions

Join the Back (part 1), Bottom (part 2) and the Sides (part 3) together with glue.



Paint it, or cover with lacquer, after glue is dry. If you wish to give it as a present, you can add a family name, or a company name on the frame side.

Cut and sand three pieces of cuboids. These pieces will display the months of the year in your calendar.

Each cuboid will have four months on it. You should paint or write months January, February, March and April on the first one, May through August on the second, September, October, November and December on the last cuboid.

Cut two cubes. These cubes will display the date numbers of the month.

One cube should have numbers: 1, 2, 3, 4, 5 and 0 painted each on one side of the cube.

The second cube should have numbers: 1, 2, 6, 7, 8 and 0. Number 6 on this cube will serve also as 9 when needed.

When the numbers and month are in question, you can choose to simply draw or paint them, but the real vintage feel they will get, if you use the marquetry technique, carving technique or even a woodburning technique. Choice is up to you.

Now, put the months cuboids on the bottom of the frame, with current month in front, and choose the numbers on cubes with exact date, place them on top of months cuboids and enjoy. Of course, do not forget to flip cubes tomorrow, and each following day, so this beautiful perpetual calendar serve right its purpose.

