

Passenger Plane



Playing games is an integral part of every person's life. The game is very important for growing up the child, because children fully concentrate to it, they have a great joy during the play and their approach to the game is free and spontaneous.

During the play, a child often uses some toy, which should fulfill a certain standards. It should be easy to use, have visual and aesthetic quality, be properly adjusted for the child's hand, have vivid colors and its construction should be easily understandable. In addition to that, every toy should be firm and well shaped, so the child could not hurt itself. Glues and paints should be stable, without smell and above all harmless substances. Toys designed for the younger kids should be larger and simpler, because small children have limited skills of toy manipulation. The composite toys are suitable for the older children. The most important quality of toy for any child's age is its well-planned function.

This wooden toy can be covered with lacquer or painted in any color. They are ecologically acceptable, give an impression of warmth and children are glad to play with them.

This is the plan for manufacturing a simple Passenger Plane toy for your child. The whole structure can be made at home for a relatively short time. You can use various types of wood, but we recommend birch, beech, maple or alder.

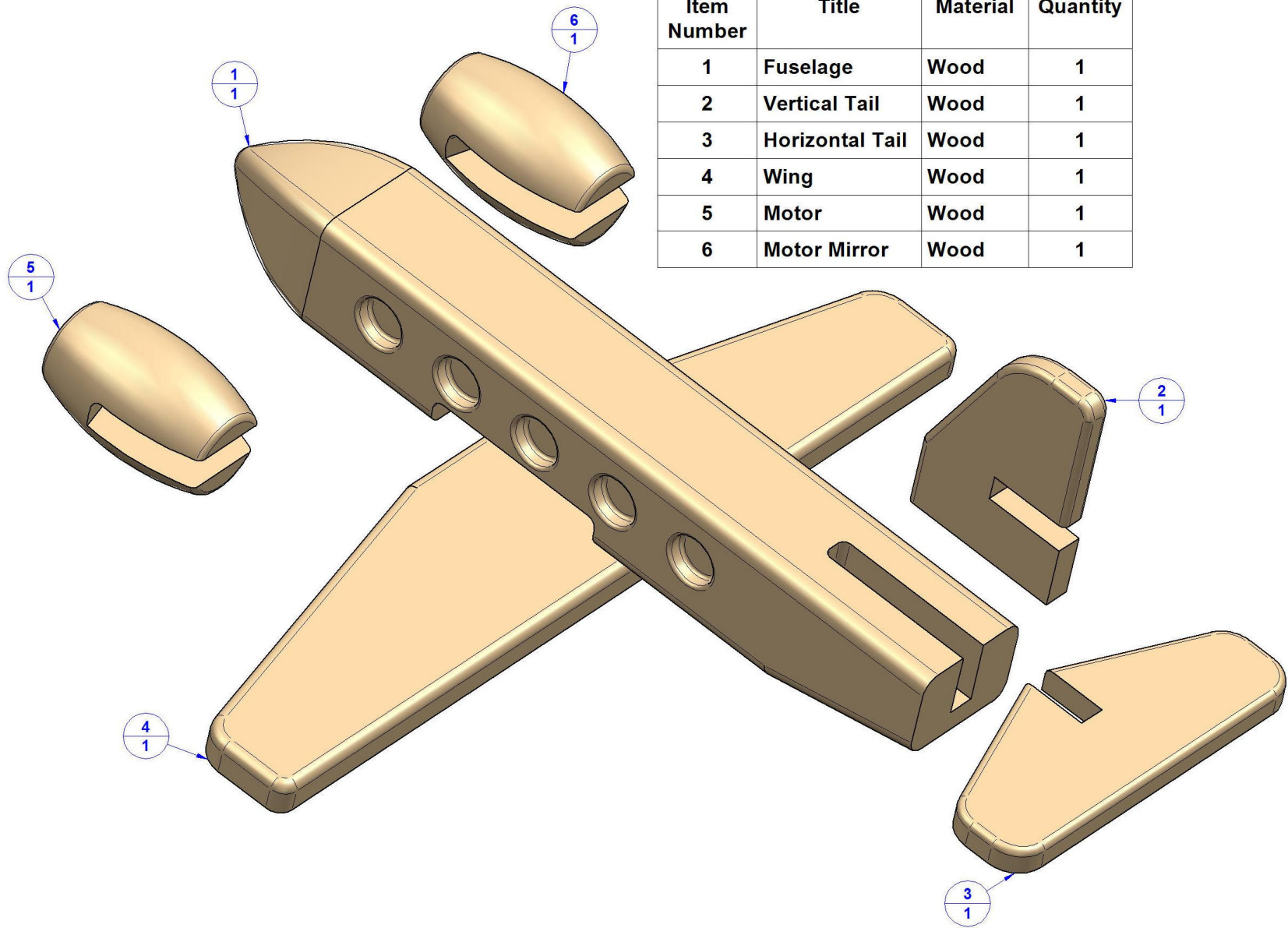
If you choose to protect the surface of your project with wood paint or lacquer, be careful to use only substances that are safe and harmless for your child

Carefully make precise plane parts by the measurements given on particular pictures.

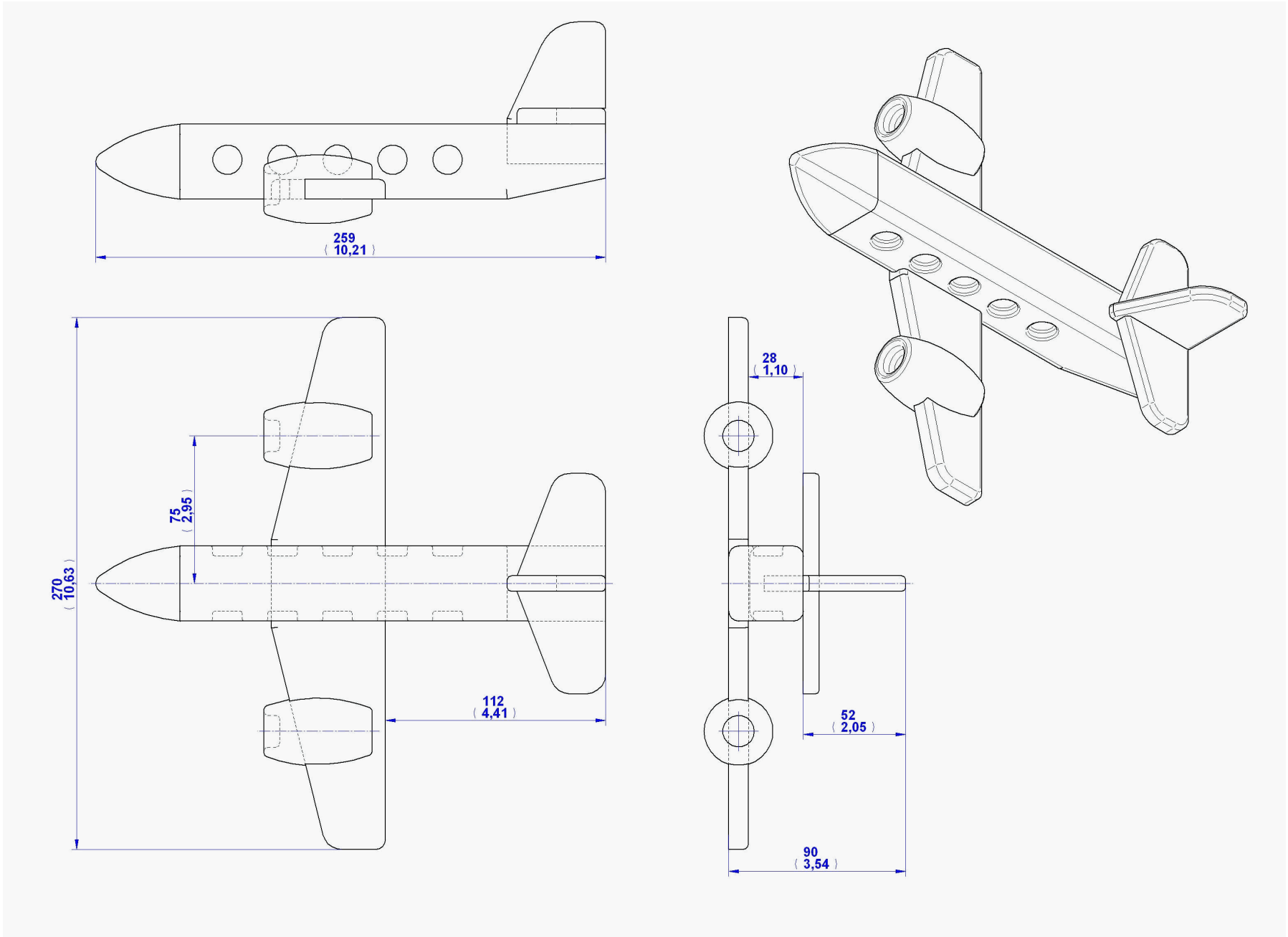
Note: The measurements are given in millimeters, while the measurements given in inches are in brackets (1 inch = 25,4 mm).

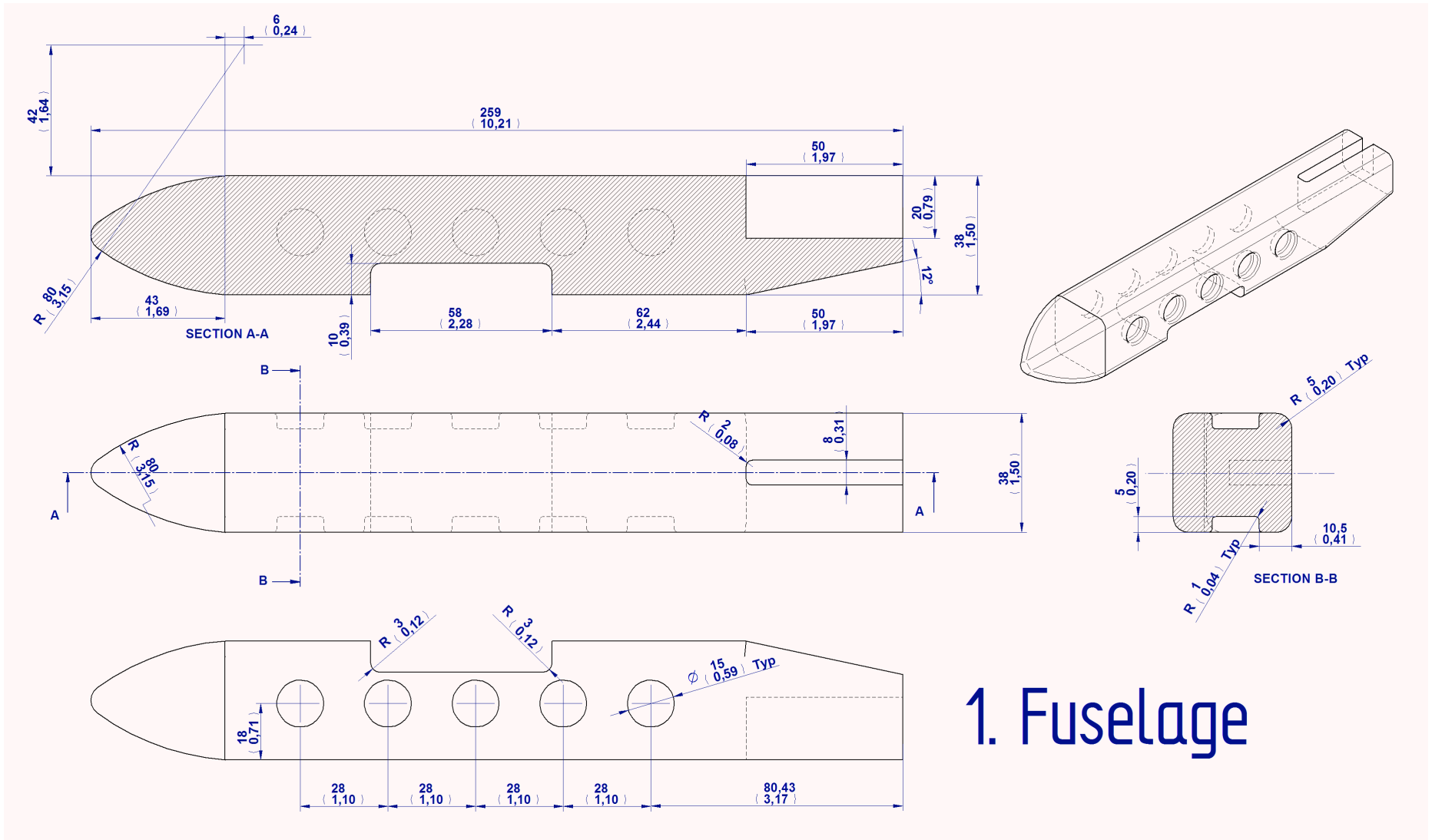
PARTS LIST

Item Number	Title	Material	Quantity
1	Fuselage	Wood	1
2	Vertical Tail	Wood	1
3	Horizontal Tail	Wood	1
4	Wing	Wood	1
5	Motor	Wood	1
6	Motor Mirror	Wood	1

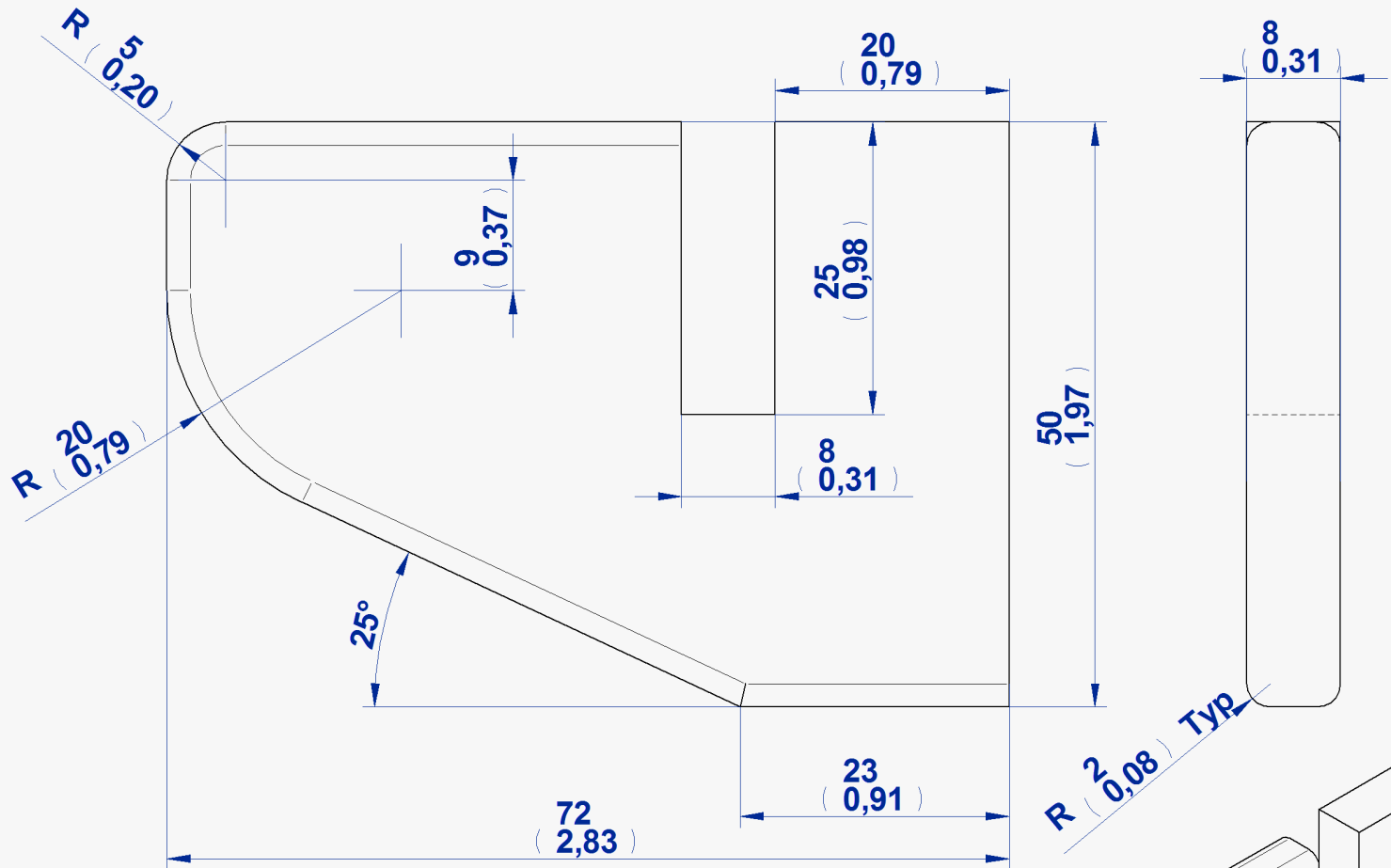


2D Documentation

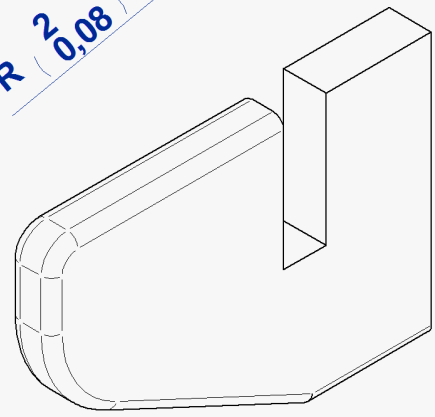


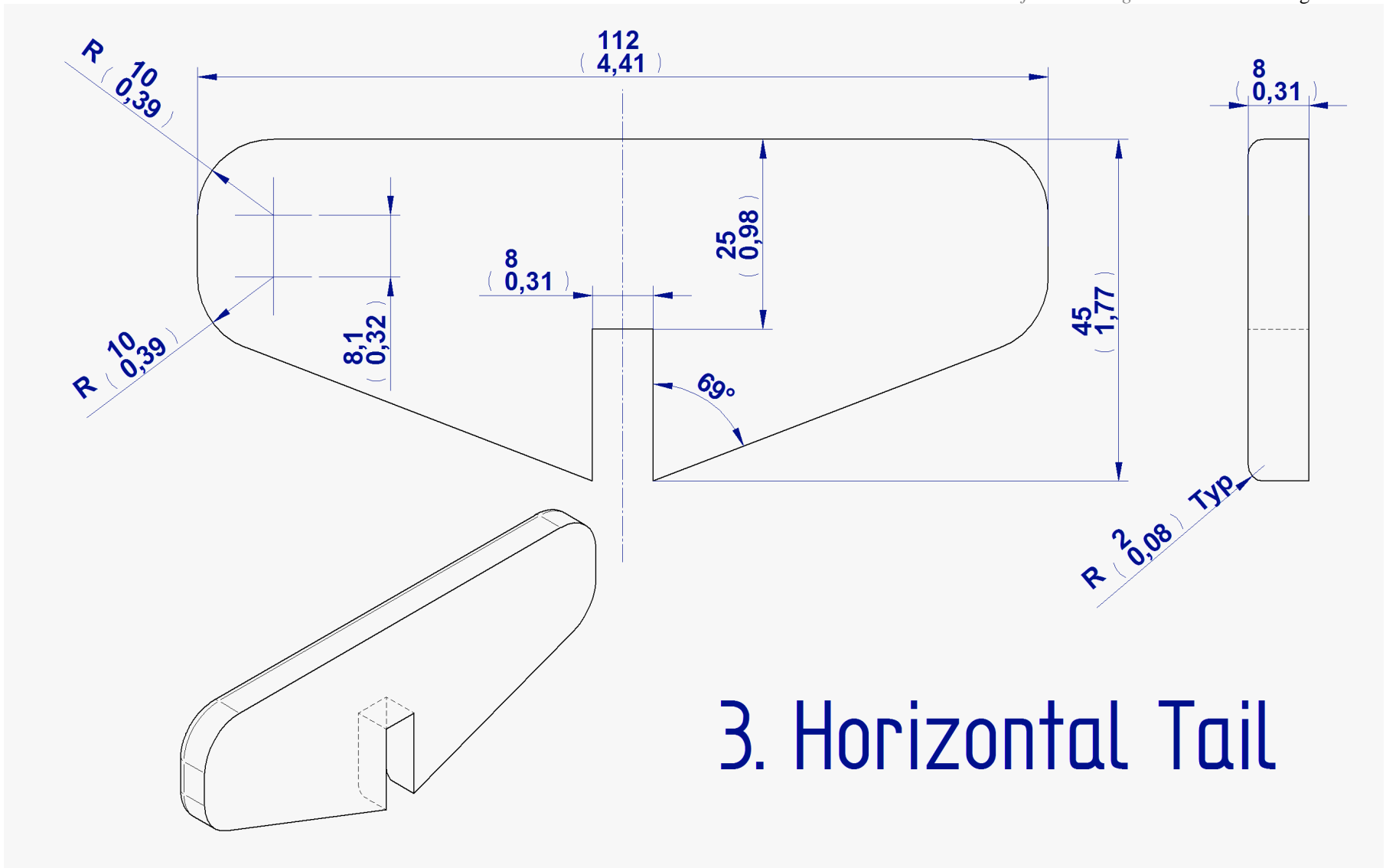


1. Fuselage

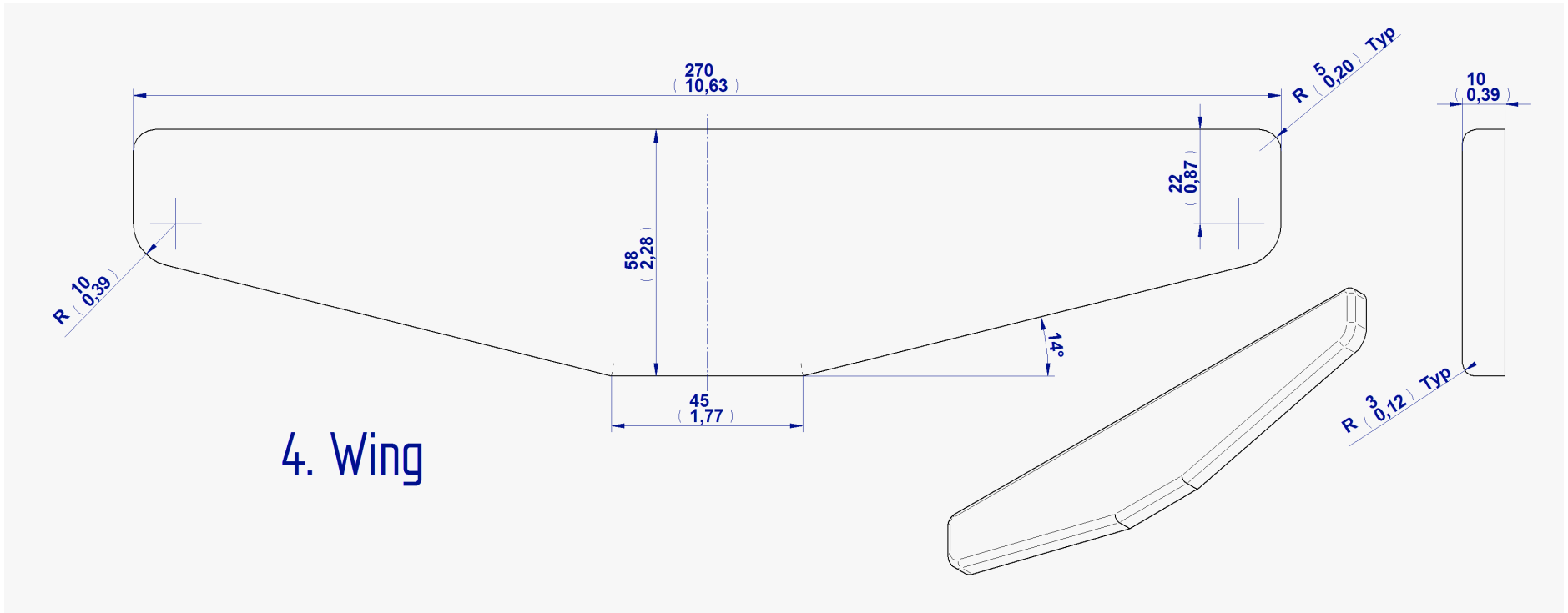


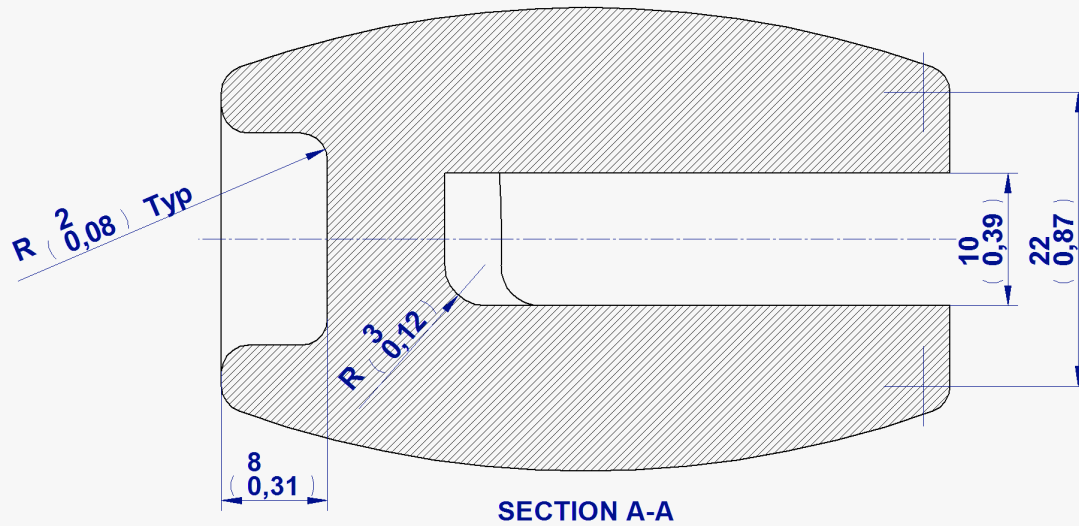
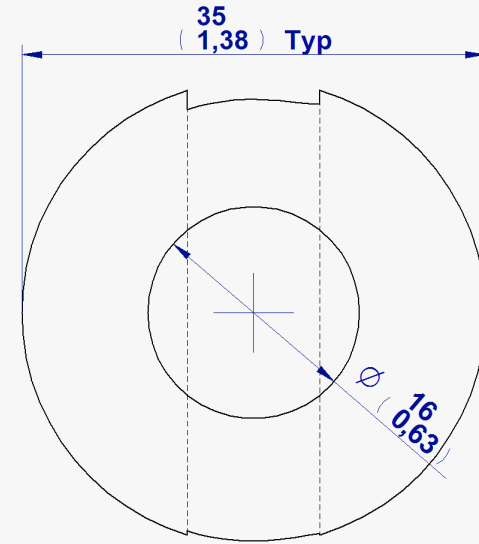
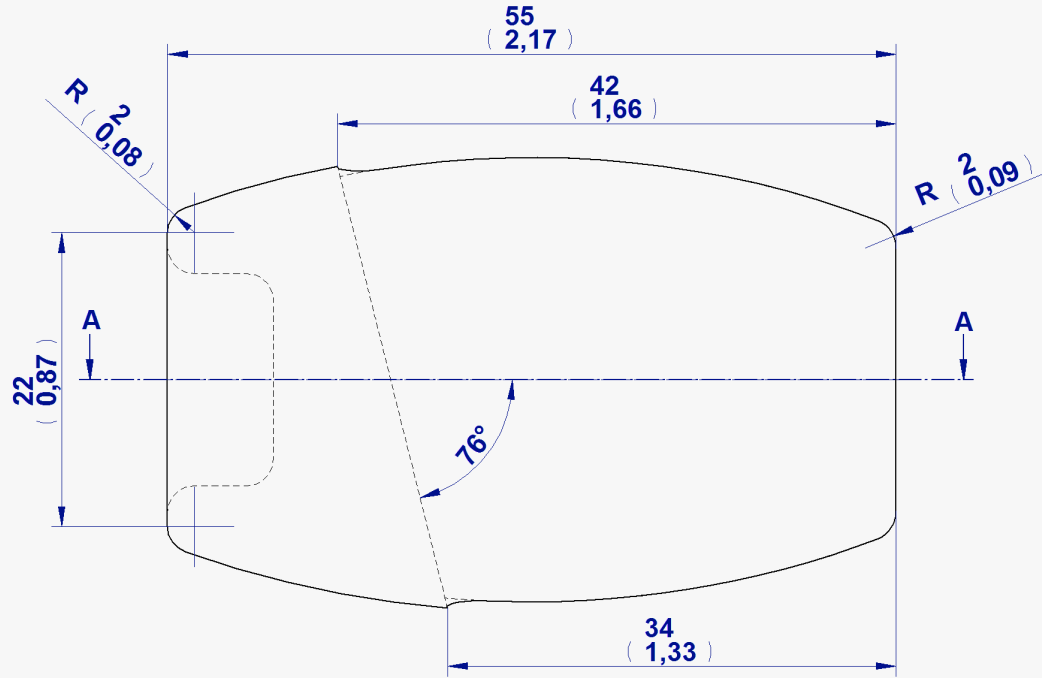
2. Vertical Tail



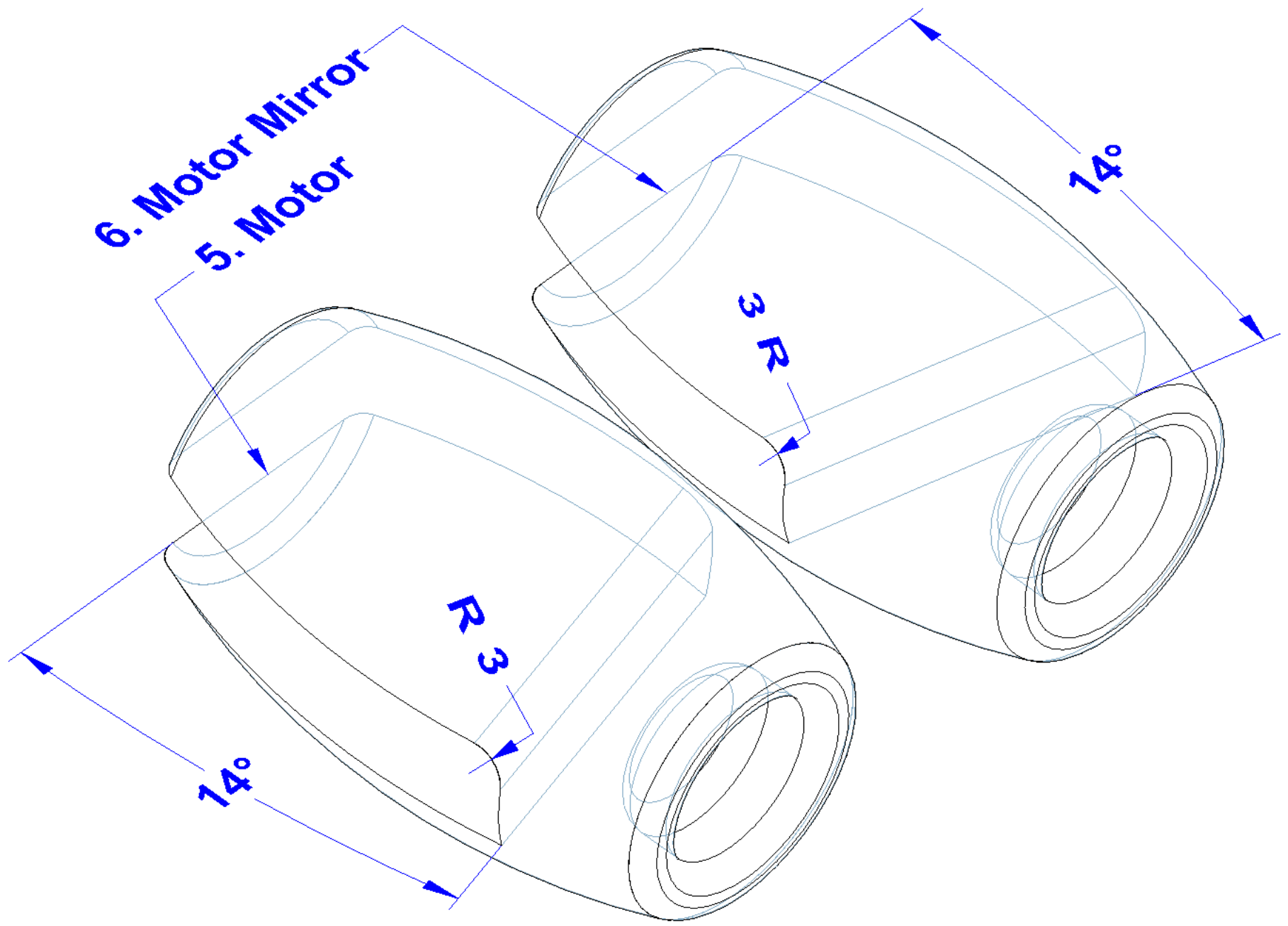


3. Horizontal Tail



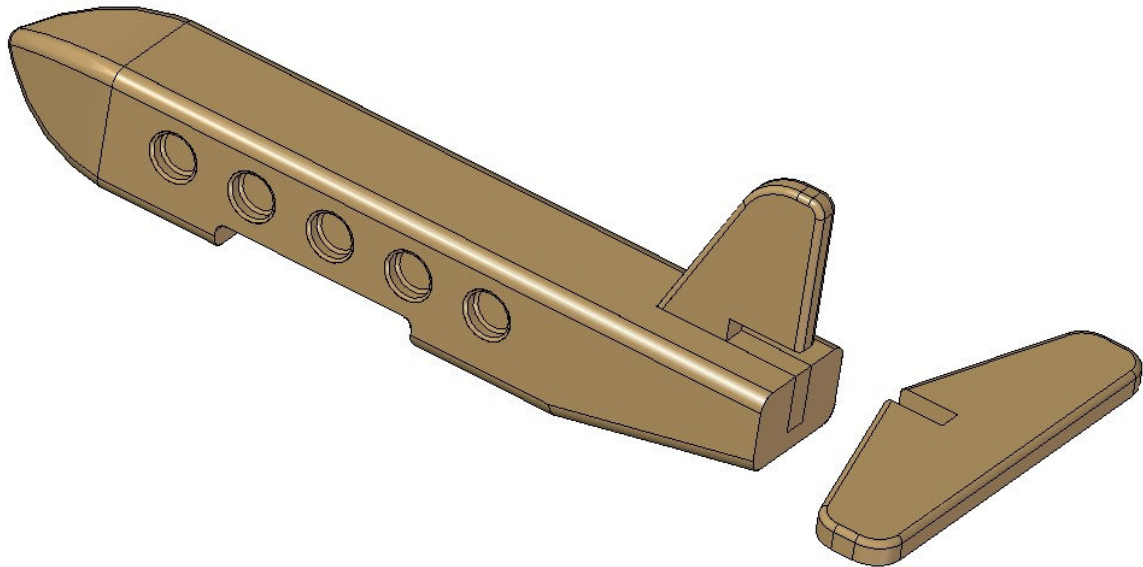
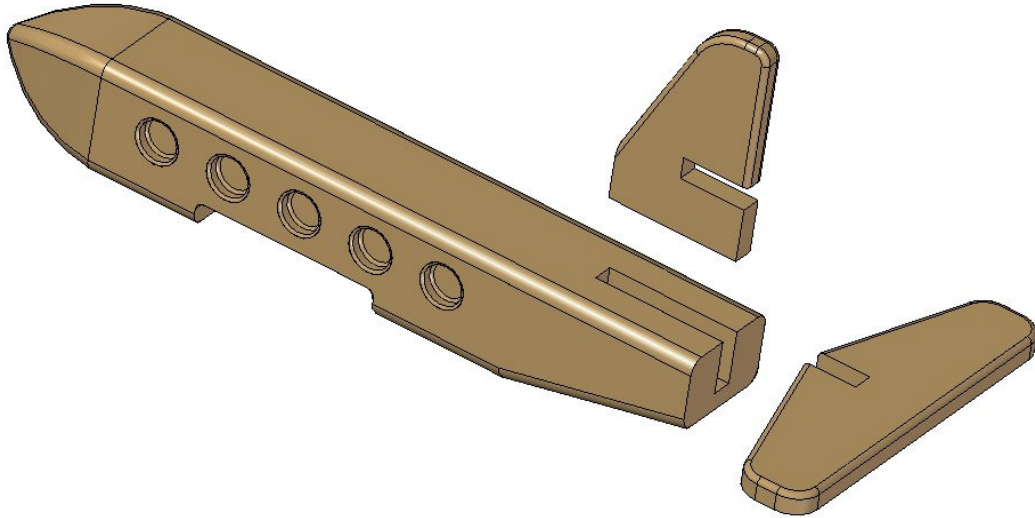


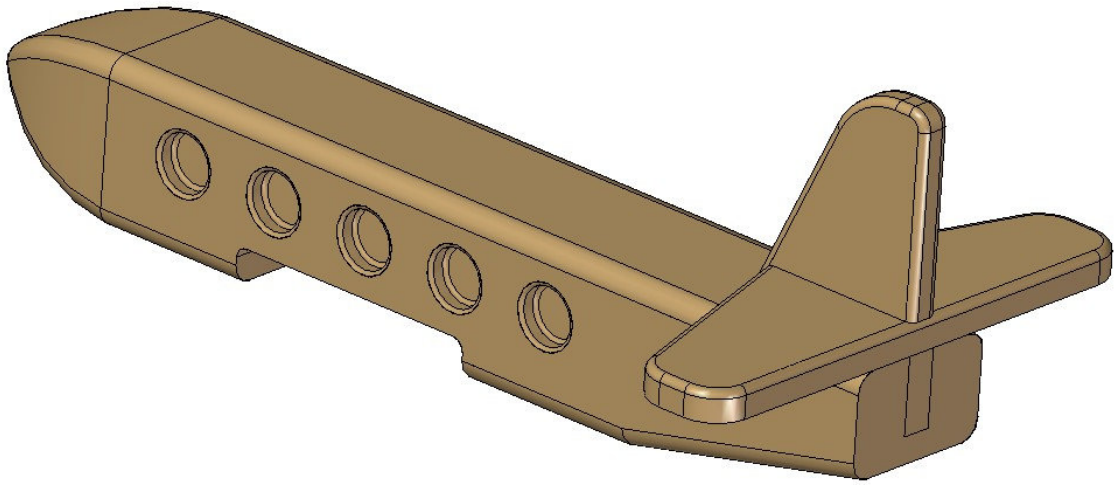
5. Motor



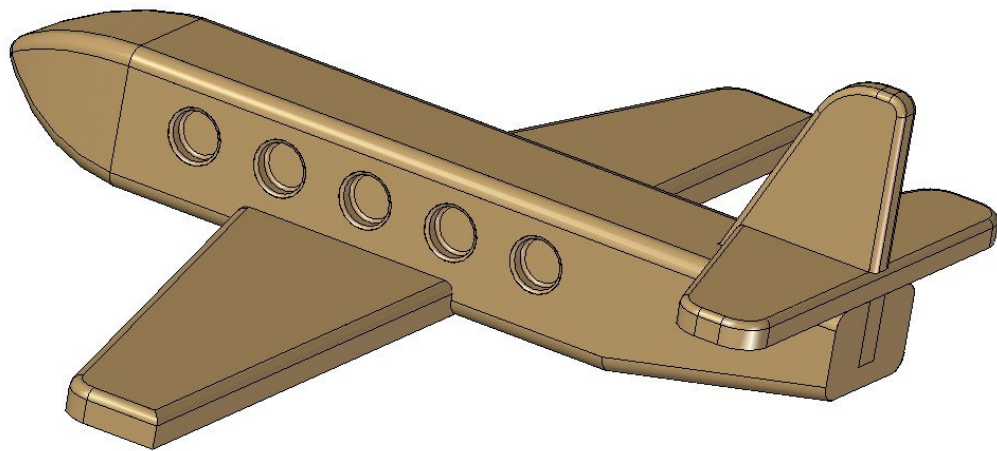
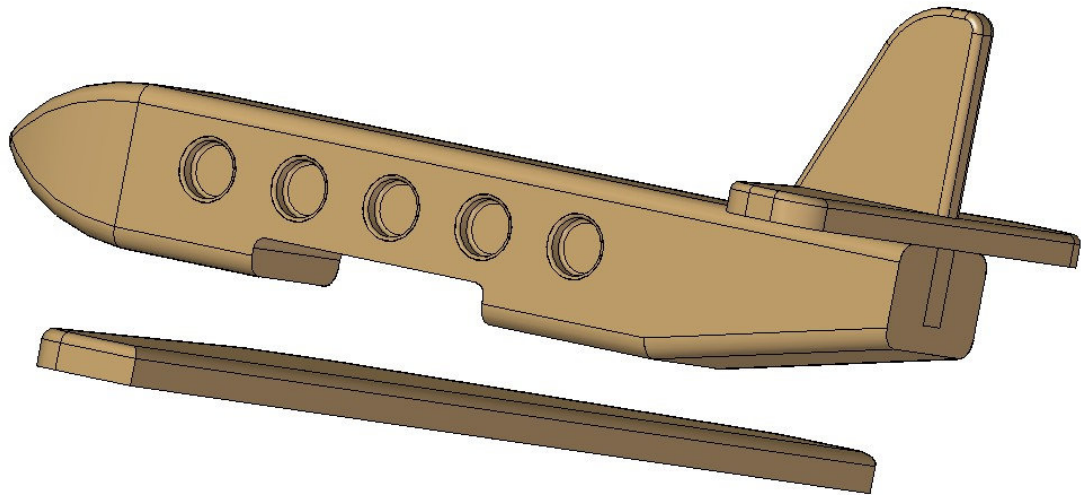
Assemblage Instructions

1. Attach the Vertical tail (item 2) and Horizontal tail (item 3) to the Fuselage (item 1) with glue.





2. Attach the Wing (item 4) to the Fuselage with glue.



3. Attach the Motor (item 5) and Motor Mirror (item6) to the Wing with glue.

